

Answer **all** the questions.

1 Fig. 1.1 shows a student's diagrams of two plant cells. Each cell was observed using a different type of microscope. The cells are not drawn to scale.

(a)

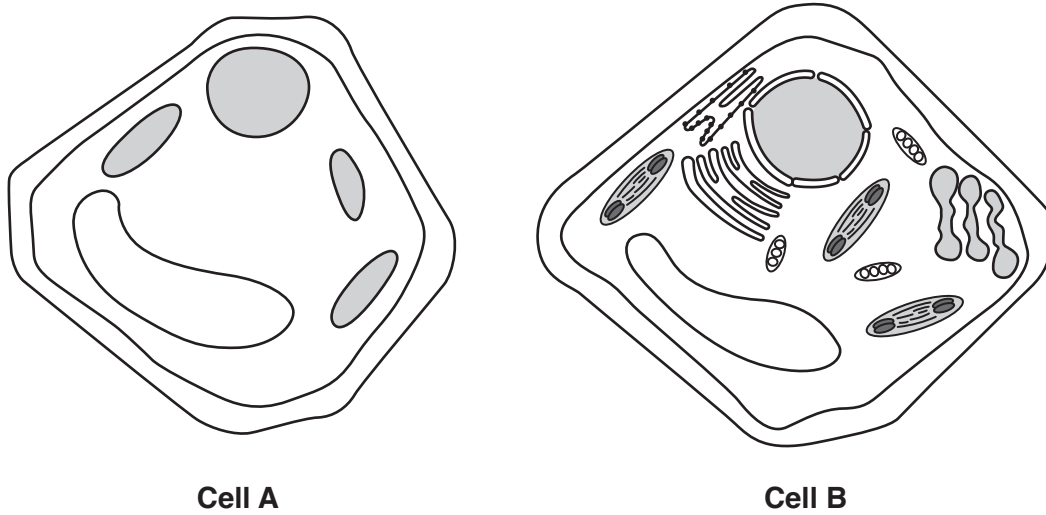


Fig. 1.1

(i) **Cell B** in Fig. 1.1 was observed using an electron microscope.

Give one piece of evidence from Fig. 1.1 that supports this.

.....  
..... [1]

(ii) Give one way that an image produced by a laser scanning confocal microscope differs from that produced by an electron microscope.

.....  
..... [1]

(b) Meiosis is a type of nuclear division.

Fig. 1.2 shows a photomicrograph of plant cells undergoing meiosis.

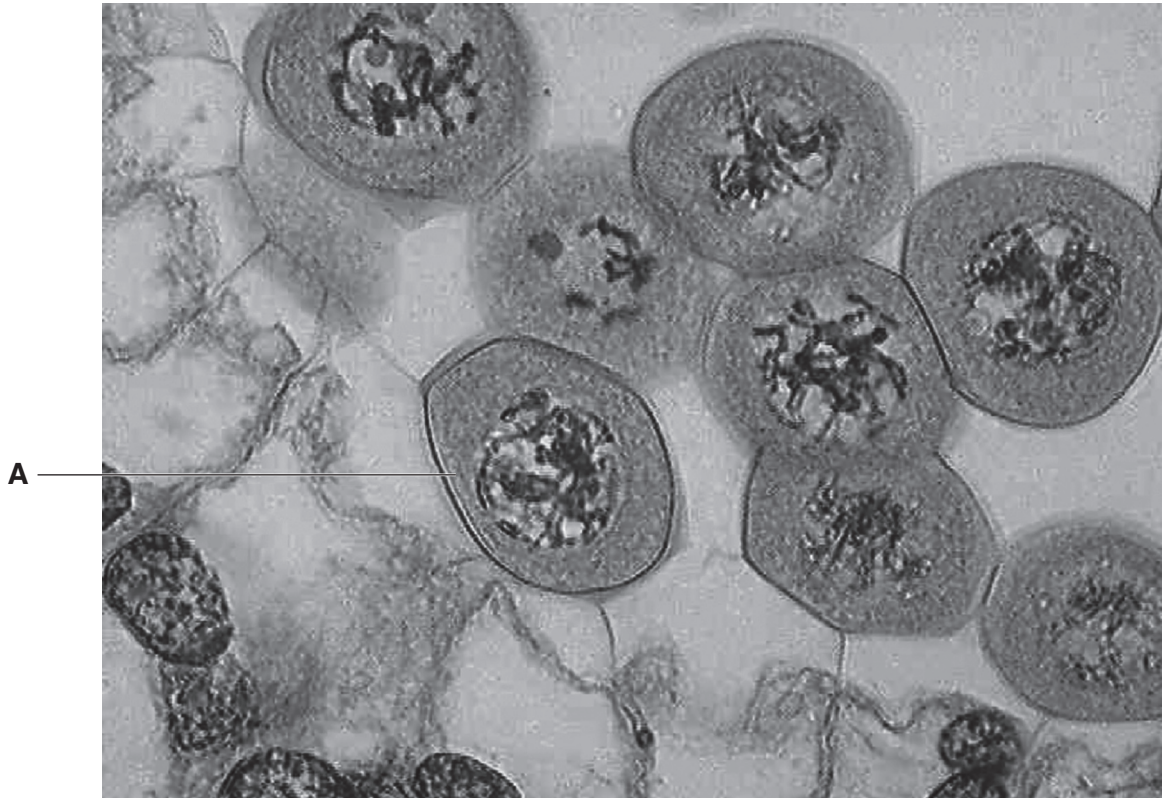


Fig. 1.2

(i) Identify the stage of meiosis 1 shown in the cell labelled A.

..... [1]

(ii) Based only on your observations of Fig.1.2, state **two** reasons for your answer in (b)(i).

.....  
.....  
.....  
..... [2]

