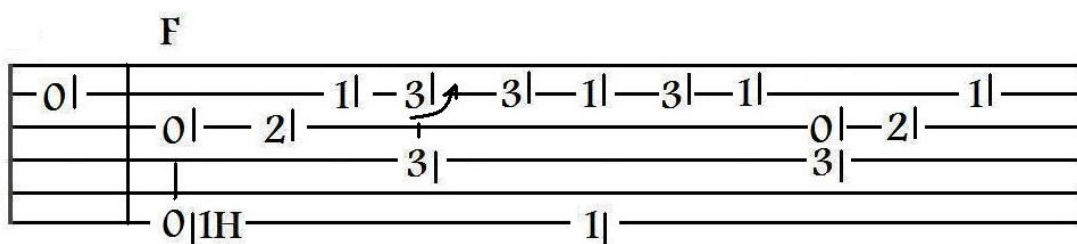
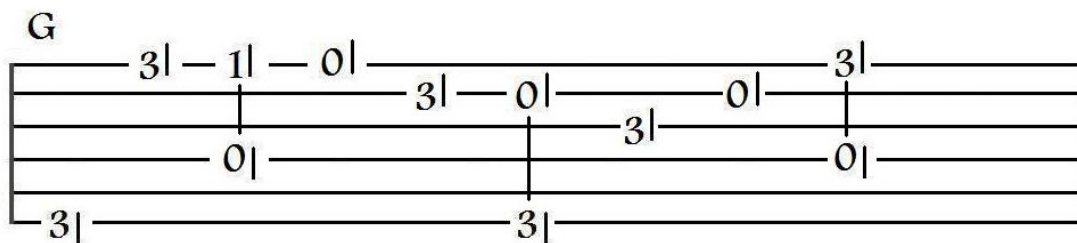
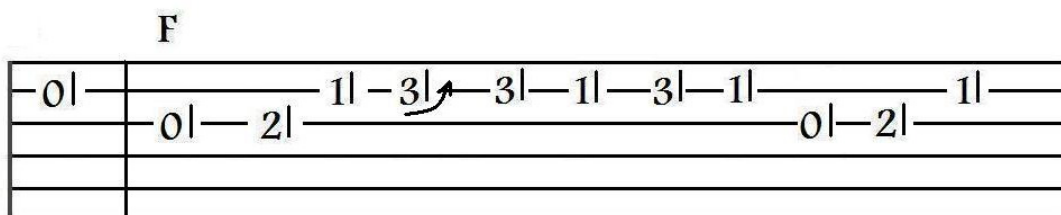
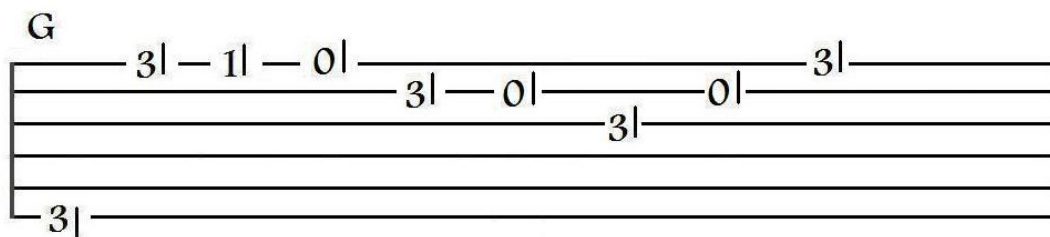


Intro



Alternative for first two sections (exactly the same treble run ,but no bass)



Musical score for 'into verse'. The score is written on five staves. The first staff has a treble clef and a key signature of one sharp (F#). The music consists of several measures with notes and rests. The second staff has a bass clef and a key signature of one sharp (F#). The music consists of several measures with notes and rests. The third staff has a treble clef and a key signature of one sharp (F#). The music consists of several measures with notes and rests. The fourth staff has a bass clef and a key signature of one sharp (F#). The music consists of several measures with notes and rests. The fifth staff has a treble clef and a key signature of one sharp (F#). The music consists of several measures with notes and rests. The score ends with a double bar line.

Verse

Diagram illustrating the C major scale on a four-line staff. The notes are C, D, E, F, G, A, B, and C7. Fingerings are indicated by numbers 1, 2, and 3. A double bar line separates the scale from the C7 chord diagram.

C

3| 5| 3| 0| 1| 2| 0| 0| 1| 3| 0| 1| 4| 0| 1| 0| 2|

2| 0| 2| 3| 2|

3|

C7 0| ————— **F** 1| — 3| — 1| — 3| — 1| —

3| — 1| — 3| — 0|2H — — — — — 3| — — — — — 1| —

3| — — — — — 3| — — — — — 1| — — — — — 1| —

3| — — — — — 3| — — — — — 1| — — — — — 1| —

F ————— 1| — 3| — 1| — 3| — 1| —

0|2H — — — — — 3| — — — — — 1| — 2| —

1| — — — — — 1| —

C 3| — 5| — 3| — 0| — **G7** 1| — 1| —

4| — — — — — 3| — — — — — 0| —

2| — — — — — 0| — — — — — 0| —

3| — — — — — 3| — — — — —

C ————— 3| — 0| — **A7** 3| —

1| — — — — — 1| — 0| — — — — —

0| — — — — — 2| — — — — — 3| — — — — — 2| —

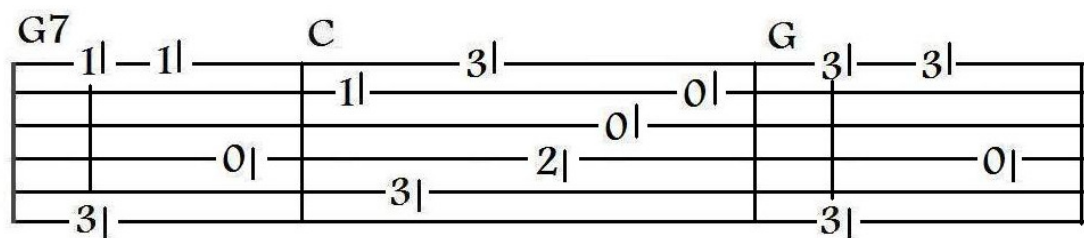
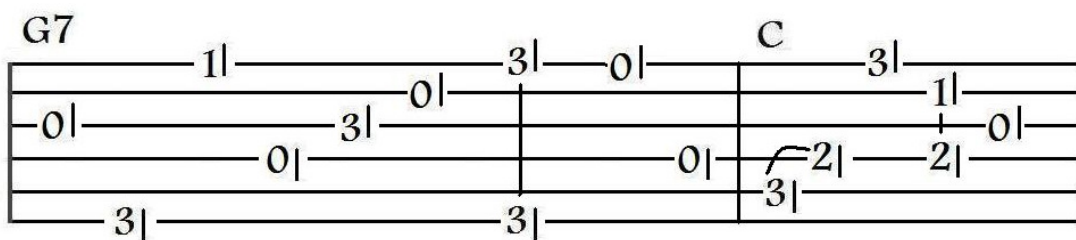
3| — — — — — 0| — — — — — 2| —

D7 ————— 2| — 2| — — — — — 2| —

0|2H — — — — — 1| — — — — — 3| —

0| — — — — — 0| — — — — — 0| —

2| — — — — — 2| —



Variation for last two sections

