

Semi Slav, The little Monster! 1

1. White just played Bd3, Should Black play dc4 ?



2. White just played e4, what should Black play?

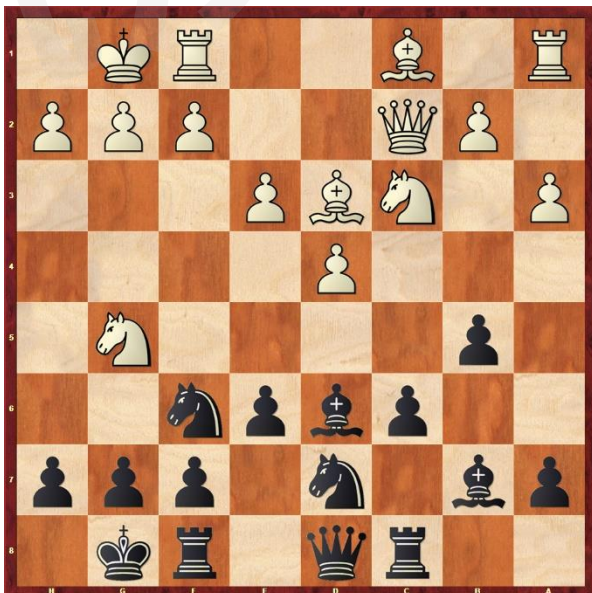


Semi Slav, The little Monster! 1

3. White just played b4, can black play c5? Write down your variation.



4. Anand was Black, what he did play in this position?



Semi Slav, The little Monster! 1

5. Can you find Anand's combination for black?



6. What is Anand's amazing move for Black?

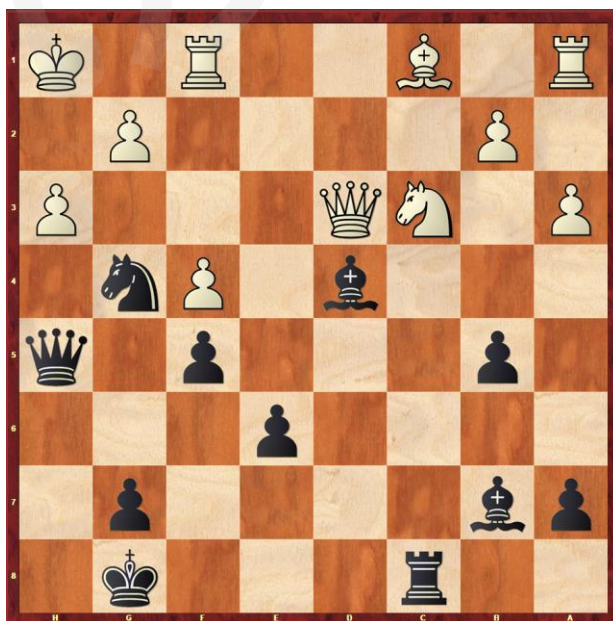


Semi Slav, The little Monster! 1

7. What is the best move for Black?



8. Can you find a winning for Black?



Semi Slav, The little Monster! 1

Game Study:

Game 1

Levon Aronian (2802) – Viswanathan Anand (2772)

[D47]

Tata Steel Group A Wijk aan Zee NED (4), 15.01.2013

1.d4 d5 2.c4 c6 3.Nf3 Nf6 4.Nc3 e6 5.e3 Nbd7 6.Bd3 dxc4 7.Bxc4 b5 8.Bd3 Bd6 9.0-0 0-0 10.Qc2 Bb7 11.a3 Rc8 12.Ng5?! [In retrospect, this opening line is put to the test by Anand's response.]

12...c5! [Black ALWAYS wants to play this in the Semi-Slav. Excellent tactics and analysis are needed to justify it here.]

[12...Bxh2+ This tactic does win a pawn, but it leaves White with the better pieces and the center. 13.Kxh2 Ng4+ 14.Kg1 Qxg5 15.f3 Ngf6 16.e4 ?]

13.Nxh7 [13.Nxb5? Bxh2+ now this works. 14.Kxh2 Ng4+ 15.Kg1 Qxg5 ?; 13.Bxb5? cxd4 14.exd4 h6 15.Nh3 Qc7 ? Black's pieces are humming.; 13.Bxh7+!? Kh8 14.Be4 (14.f4 cxd4 15.exd4 g6 Anand gives a LOT of analysis here. I'll just say unclear.) 14...Nxe4 15.Ncxe4 Be7 ♘♙]

13...Ng4 14.f4? [14.h3! Bh2+ 15.Kh1 Qh4 Anand also gives lots of analysis here. Both Be4 and d5 are interesting here. 16.Be4 (16.d5)]

14...cxd4 15.exd4 Bc5!! [BOOM! Anand refutes White's setup in style. Suddenly, White finds himself overextended and beset by ideas of smothered mate.]

16.Be2 [16.dxc5? Nxc5 17.Be2 (17.h3 Nxd3 18.hxg4 Qd4+ 19.Kh2 Kxh7 ?) 17...Qd4+ 18.Kh1 Nf2+ 19.Rxf2 Qxf2 Mates are threatened on g2 and e1, and there is no defense.]

Semi Slav, The little Monster! 1

16...Nde5!! [BOOMX2!! Anand's second minor-piece sacrifice forces the win. Anand's pieces breathe fire through the center of the board.]

17.Bxg4 [17.dxc5? Qd4+ 18.Kh1 Nf2+ 19.Rxf2 Qxf2 -+; 17.fxe5? Qxd4+ 18.Kh1 Qg1+ 19.Rxg1 Nf2#]

17...Bxd4+ 18.Kh1 Nxd4 19.Nxf8 [19.Ng5 f5 ...Rf6 and ...Rh6 is a winning idea. 20.Nxe6 Qh4 -+]

19...f5! [19...Kxf8 20.Qh7 is trickier.]

20.Ng6 Qf6 21.h3 [21.Ne5 Nxd4! The only winning move, but a completely decisive one.]

21...Qxg6 22.Qe2 [22.hxg4 Qh6#]

22...Qh5 23.Qd3 Be3! [This interference move destroys the the defense of ...Qxh3+ and is completely decisive. A fine finish to an incredibly brilliant game.]

0-1

Game Resource: chess.com

Link: <https://www.chess.com/blog/SamCopeland/anands-immortal-chess-game-aronian-vs-anand-2013>

Semi Slav, The little Monster! 1

答案：

1. Black should play **dc4**, cause white's Bishop had already moved once.
2. Black should play **e5**!
3. Black can play **c5**, 12...**c5** 13.**bxc5** **Bxf3** 14.**gxf3** **Nxc5** 15.**dxc5** **Rxc5** Black has good compensation.
4. **c5**! Opening up the diagonal for LSB
5. **Bc5**! Take advantage of a7-g1 diagonal
6. **Nde5**! Clear the d file for the Queen
7. **f5**! **Qh4** will be a big mistake cause white has **Qh7**!
8. **Be3** Block the 3rd rank.