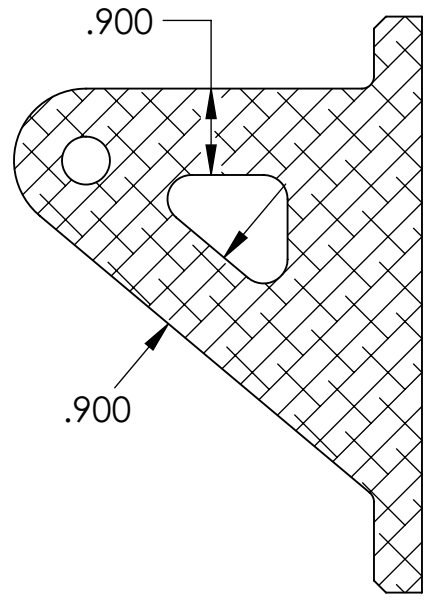
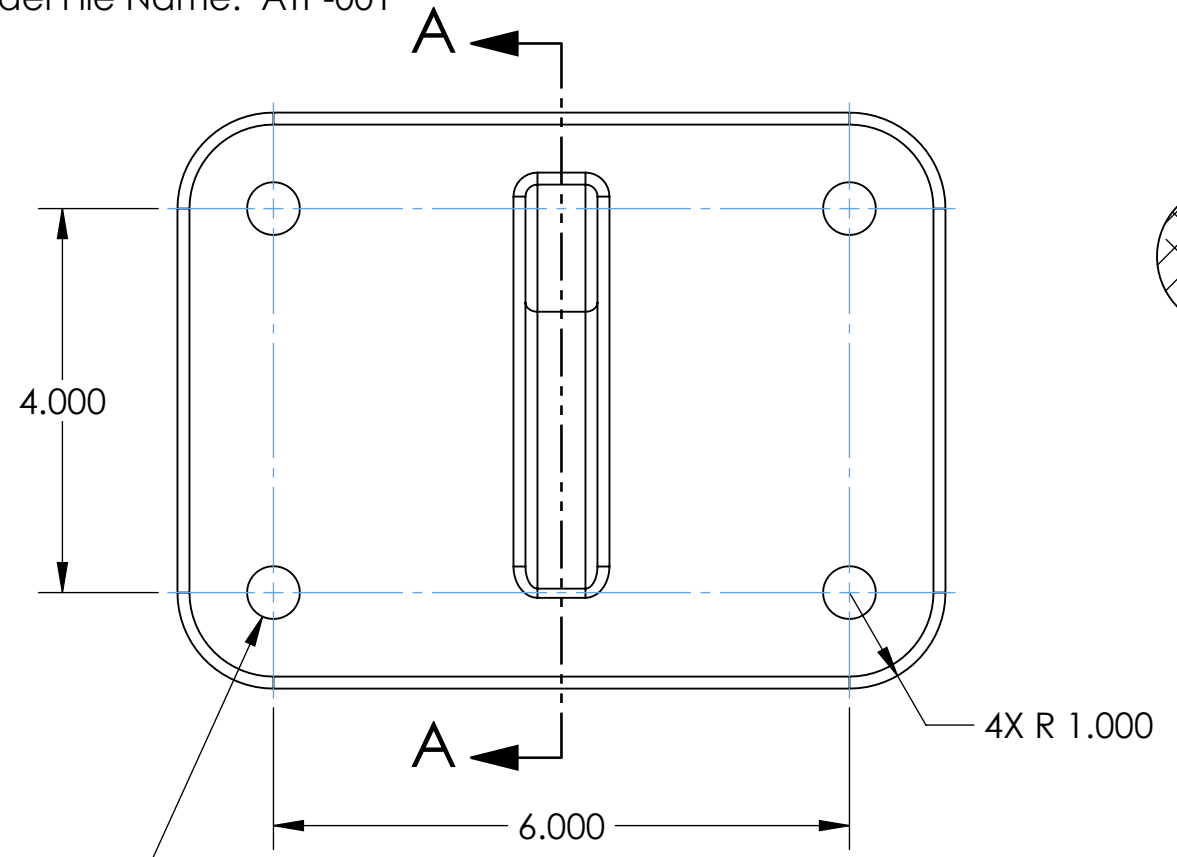
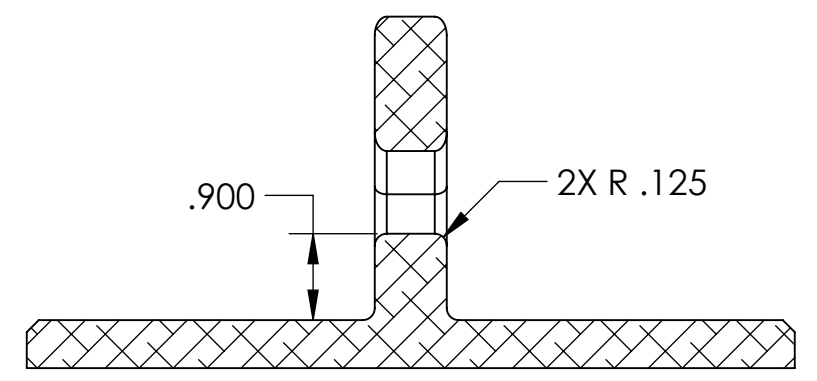
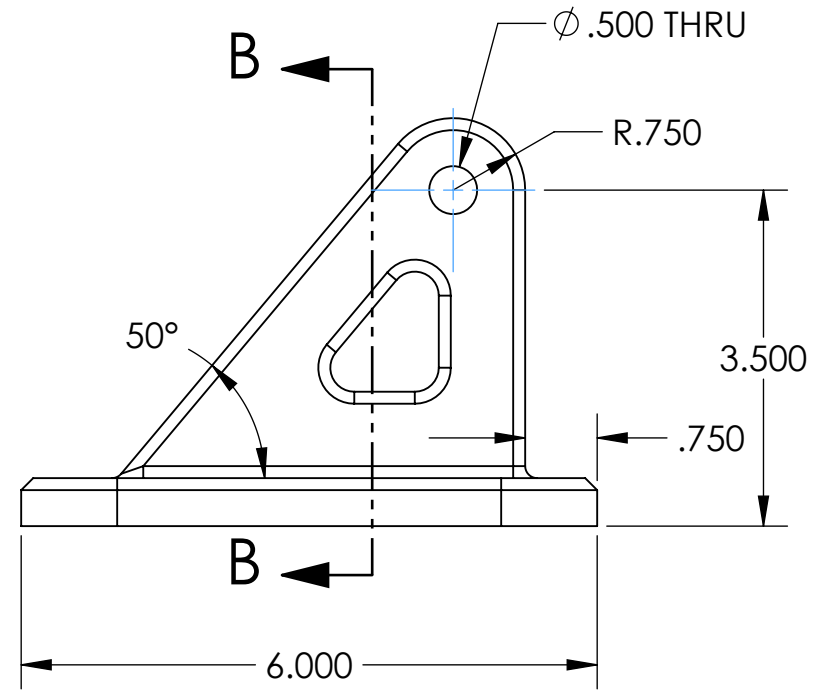
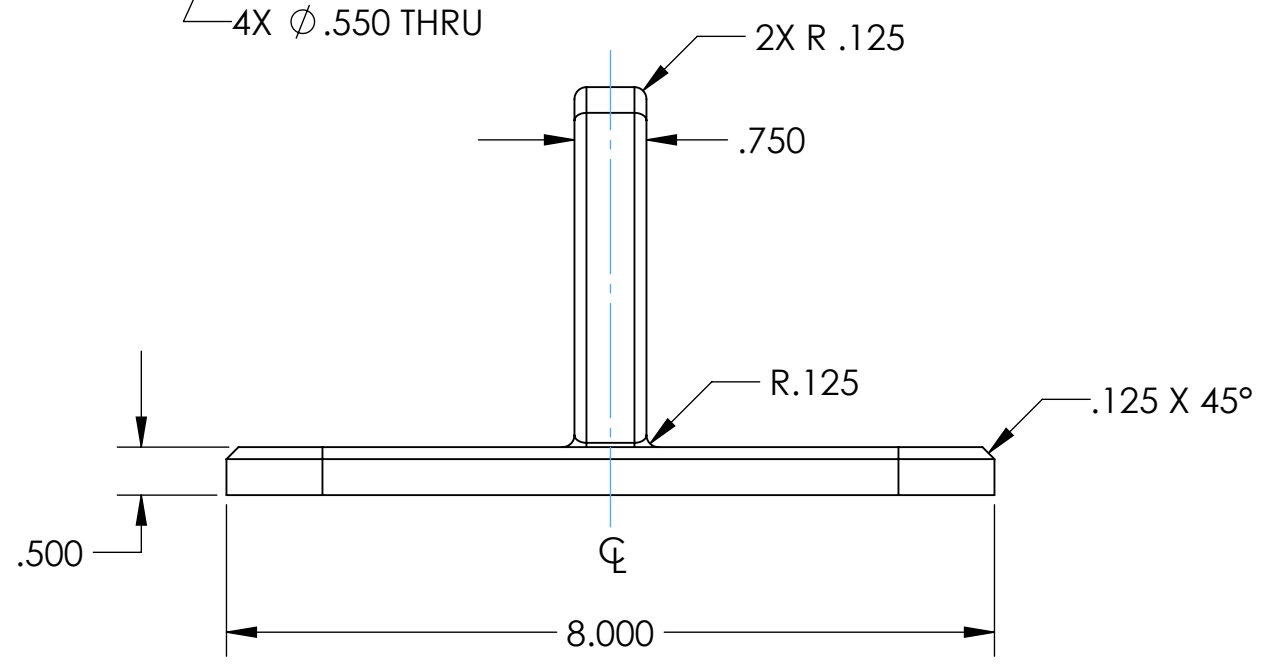
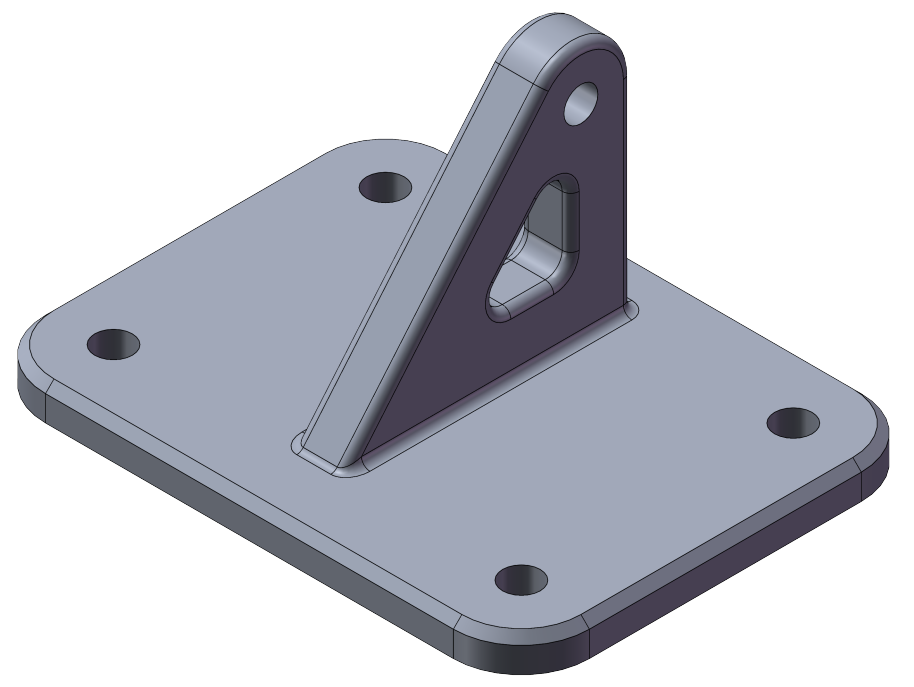


Model File Name: ATP-001

D  
C  
B  
A



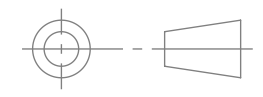
SECTION A-A



SECTION B-B

DIMENSIONS IN INCHES  
PART IS SYMMETRIC ABOUT  $\phi$

THIRD ANGLE PROJECTION



**Agile Academy**  
agile-academy.tech

DO NOT SCALE PRINT		ANCHOR BRACKET 01 SAMPLE PARTS	
TOLERANCES UNLESS OTHERWISE SPECIFIED		DRAWN BY JEV	DRAWING NO. ATP-001
.XX ± .01	.XXX ± .005	CHECKED BY JLM	SCALE: 1:2
ANGLE ± 1°	SIZE <b>B</b>	DATE 1/4/2025	SHEET 1 OF 1

- NOTES:
1. DRAWING TO BE INTERPRETED IN ACCORDANCE WITH ASME Y14.5-2018
  2. MATERIAL: 356.0-T6 PERMANENT MOLD CAST (SS) ALUMINUM
  3. DENSITY: 2,680 kg/m<sup>3</sup>
  4. VOLUME: 29.333 CUBIC INCHES
  5. MASS: 2.840 LBS