

Power
Beyond Belief.

How does your business
software measure up?

Improve Margins.

Increase Operational
Efficiencies.

New in
Palladium

V10



accounting simplified

palladium
ACCOUNTING

CONTENTS

3 GENERAL LEDGER

Account Sets and Bin Location by Warehouse
Segmented General Ledger
Customer and Vendor Journals

4 ACCOUNTS RECEIVABLE AND PAYABLE

Customer and Vendor Workflow Processing Rules
Item Weights on all Processing Documents

4&5 ACCOUNTS RECEIVABLE

Customer Inventory Manager
Sales Order Processing with Unavailable Inventory
Instalment Sale Terms (HP)
Automated Customer Open Order Statement
Open Order Cancellation Management
Delivery Costs

6 ACCOUNTS PAYABLE

Purchase Order Approvals
Change Vendor on Purchase Orders and Requisitions
Purchase Price Variance Control on Purchase Documents

7&8 INVENTORY

Advanced Assembly
Inventory Buyouts
Internal Requisitions and Issues
Inventory Adjustment Allocations to Projects
Display Negative On Hand Inventory Items on
Control Panel settings
Inventory Picker Enhancements
Container Items
Inventory Repackaging

9 DISTRIBUTION / PICK TICKETS

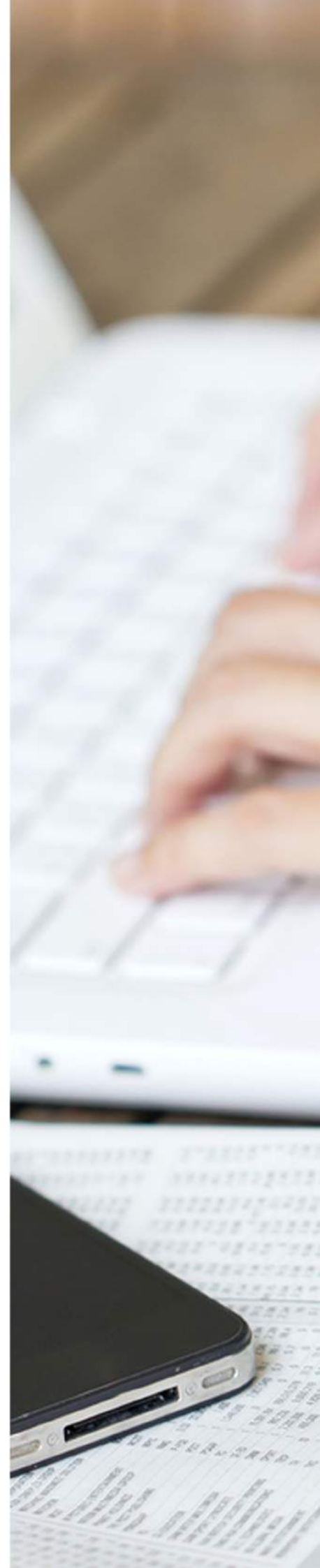
Pick Tickets by Location
Delivery Methods for Pick Tickets

10 PROCESS MANUFACTURING

Bill of Materials

10 GENERAL

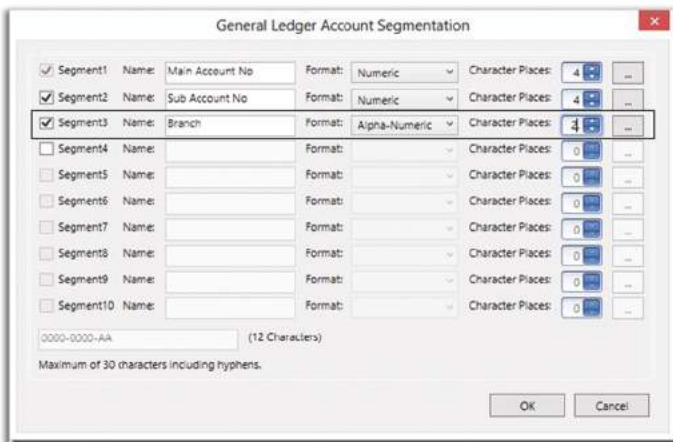
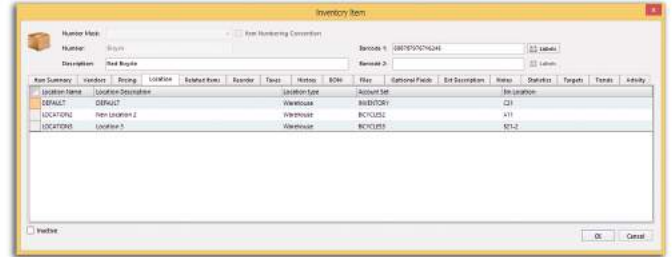
Microsoft Power BI (Business Intelligence)



GENERAL LEDGER

ACCOUNT-SETS AND BIN LOCATIONS BY WAREHOUSE

This feature allows you to now integrate the sales as well as cost of sales on a per-Item, per Warehouse basis. This opens up a host of reporting options, with the ability to now use General Ledger sub-accounts for the different locations for greater profitability and margin reporting at Financial Statement level. In addition to this we have moved the Bin Location number in the same way, supporting a bin location per item per location. In the screen on the left you will see the setup for the Bins as well as the Account-Sets per Item per Location.

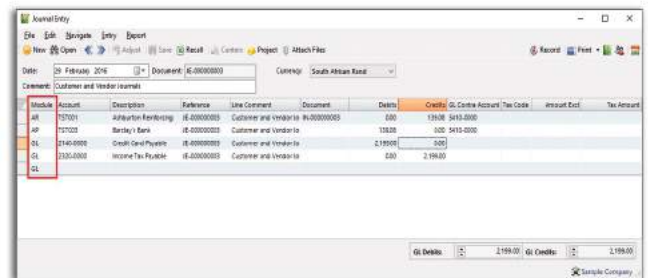


SEGMENTED GENERAL LEDGER

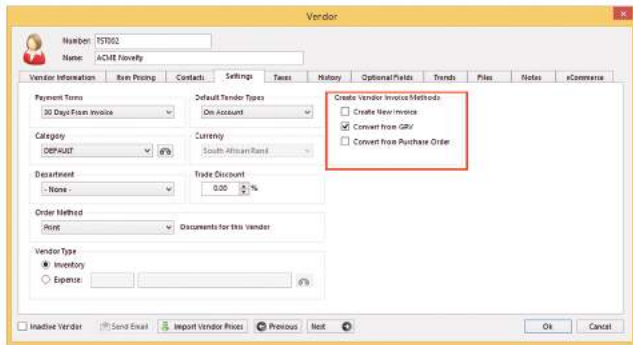
This function allows you to create up to 10 segments of General Ledger Account Numbers with the ability to filter and run all financial reports per selected combination of segments. You can also increase or add segments at any time. On the right is the main Ledger Segment setup screen.

CUSTOMER AND VENDOR JOURNALS

The General Ledger Journal function has been extended to cater for General Ledger as well as Customer and Vendor Journals. This powerful feature assists in the writing off or on of sundry amounts, and facilitates the transfer of values across Customers and/or Vendors. In addition you have the option to set the contra account with or without tax, alleviating the need for these values to appear on the tax report, should this not be required.



ACCOUNTS RECEIVABLE AND PAYABLE



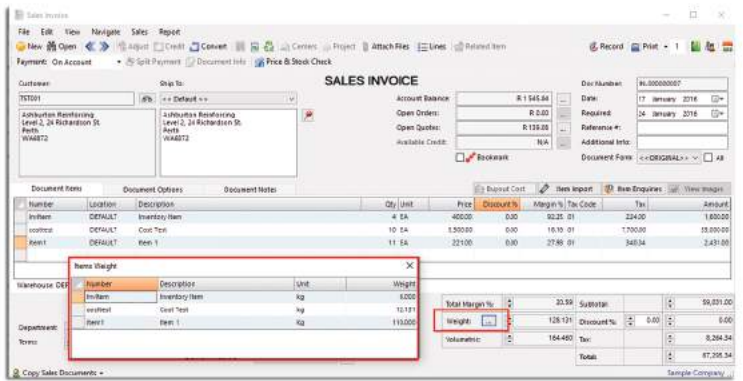
CUSTOMER AND VENDOR WORKFLOW PROCESSING RULES

You can now set processing rules to create Customer and Vendor Documents set by process. You can set specific Customers to only be able to create an invoice if converting from a Sales Order or a Pick Ticket, or you could allow other clients to be invoiced directly. This is pretty functional for Vendors with the ability to process Vendor invoices directly for Rent Invoices, and Inventory Vendors being forced to create invoices from Goods Received Vouchers. On the right is an example of a Vendor where we can only Process a Vendors invoice from a GRV.



ITEM WEIGHTS ON ALL PROCESSING DOCUMENTS

We have added the ability to view the item mass or volumetric weights on all processing documents.



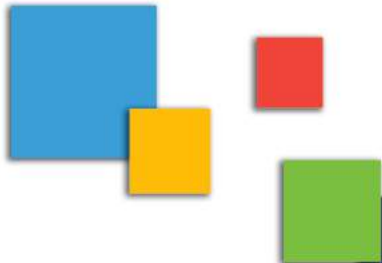
ACCOUNTS RECEIVABLE

CUSTOMER INVENTORY MANAGER

You can invoice your corporate customers using their own Item Codes and Descriptions adding that personal touch.

SALES ORDER PROCESSING WITH UNAVAILABLE INVENTORY

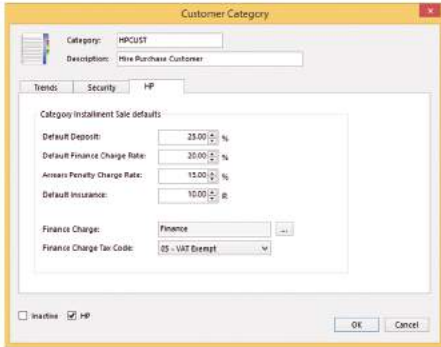
You can now validate the available inventory (on hand inventory less on sales order) on hand at time of Sales Order processing with the ability to Allow, Warn or Block the processing of the order.



ACCOUNTS RECEIVABLE

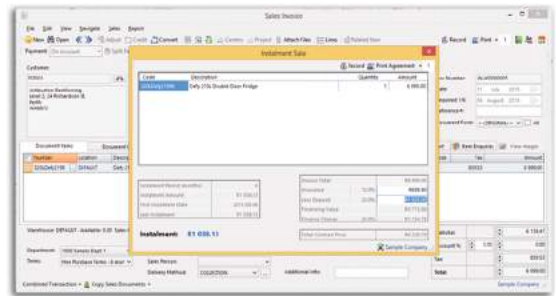
INSTALMENT SALE TERMS (HP)

The Instalment Sale Terms or Hire Purchase option allows you to sell goods over a fixed-term Period, managing the payment terms, deposits and even additional charges such as Finance Charges and Insurance, with the ability to print a custom contract or agreement.



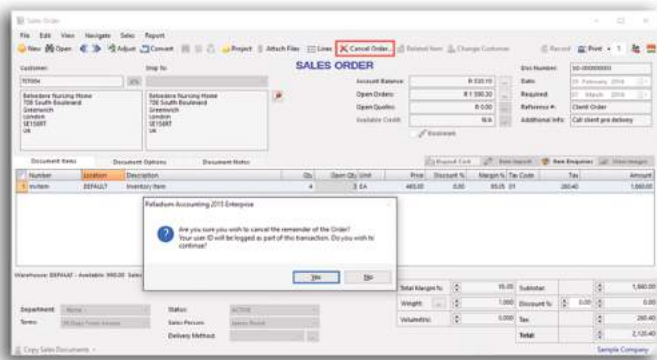
In this screen you will see that we set the default Instalment Sale Terms at Customer Category Level that will be used during the creation process of all Instalment Sale Transactions.

At time of invoicing you have the ability to add in the relevant details to the specific Instalment Sale transaction as seen above, adjusting details like Insurances or Deposit values.



AUTOMATED CUSTOMER OPEN ORDER STATEMENT

The open order statement allows you to Bulk Email Customers Personalised lists of Open Orders either in Summary per Document or in detail, similar to the way in which the Customer Statement and Customer Sales Statements are processed. This can be used to manage progress payments on Projects or just as an effective way to manage the open values of Orders, to optimise your Available Inventory Quantities.

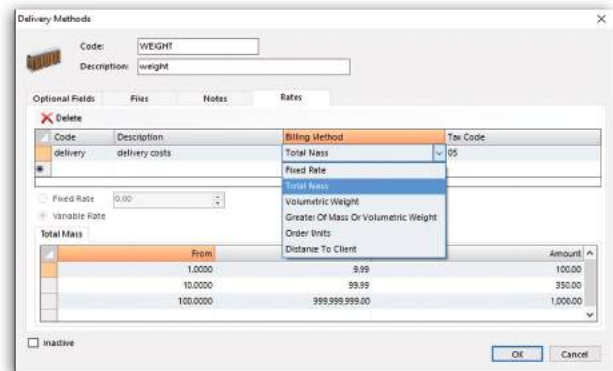


OPEN ORDER CANCELLATION MANAGEMENT

This feature allows you to manage the cancellation of open orders with predefined reason codes for further analysis. In addition, this function will record the User Details who cancelled the Order allowing you to further analyse lost orders and view the opportunity cost to the business.

DELIVERY COSTS

You can now manage and bill delivery costs based on Actual or Volumetric Weight, Distance to the client (per Customer Delivery address) or even based on the number of units sold. In addition you could even have a combination of these charges.



Total Margin %:	-130.00	Subtotal:	10.00
Weight:	0.000	Discount %:	0.00
Volumetric:	0.000	Delivery Cost:	100.00
Delivery Method:	01	Tax:	15.40
		Total:	125.40

Once created, the charges will appear at the bottom of your sales documents rather than as a line item in order to separate them from your traditional Inventory Items.

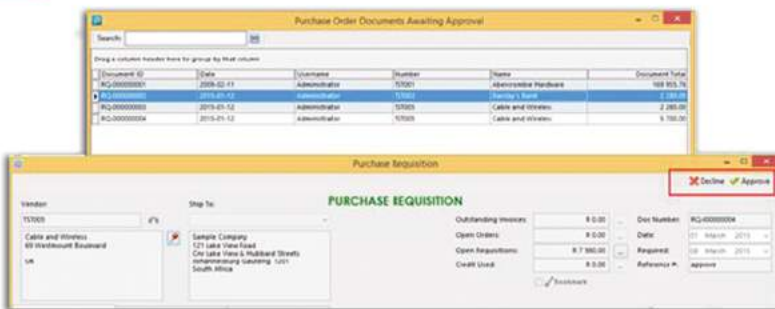
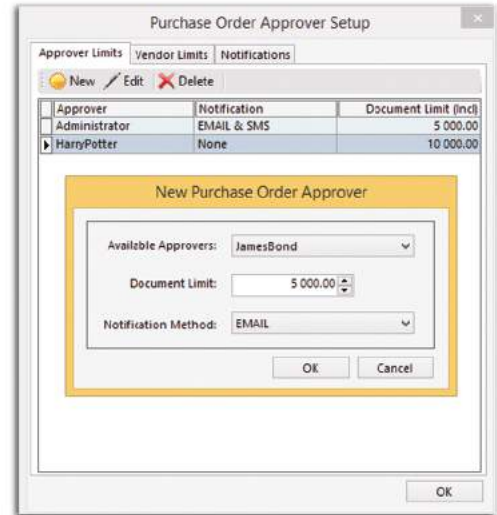


PURCHASE ORDER APPROVALS

This function allows for you to create a Purchase Order workflow authorisation function across the business to manage the related spend per Vendor as well as to set specific limits per Employee / Approver. You can activate the Purchase Order Approval function in the **Company Options function >> Payables tab**, and set the default User Document Limits and Vendor Monthly Limits. Once this feature has been activated, you will be unable to create a Purchase Order directly, without first converting it from a Purchase Quote.

APPROVAL SETUP

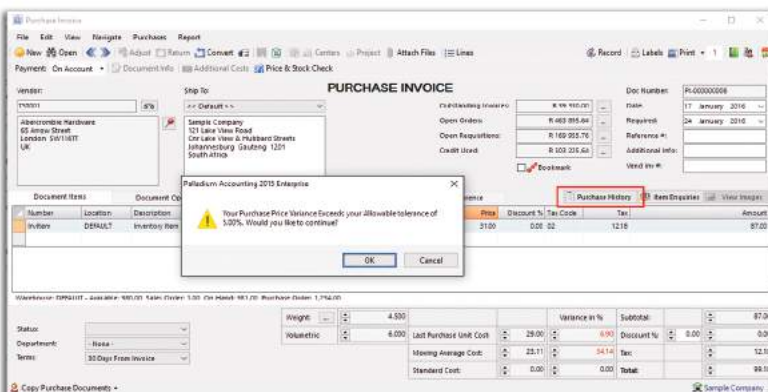
You can setup Approval Limits by User as well as by Vendor. In addition you can setup notification methods for the approver by Email, SMS or both.



The approver will see a list of documents due for approval, open the document then approve or decline the requisition.

CHANGE VENDOR ON PURCHASE ORDERS AND REQUISITIONS

We have added the ability to change the Vendor on the processing of Purchase Order and Purchase Requisitions.



PURCHASE PRICE VARIANCE CONTROL ON PURCHASE DOCUMENTS

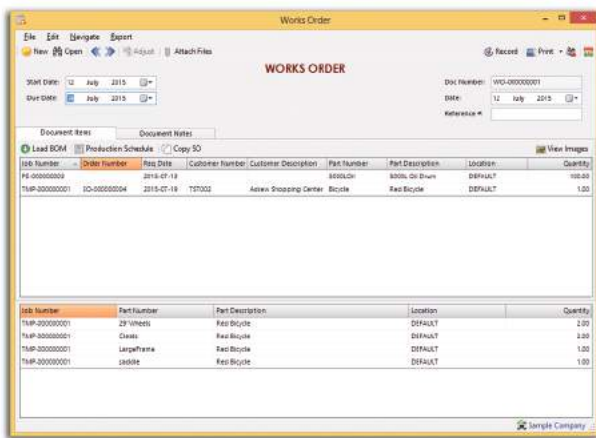
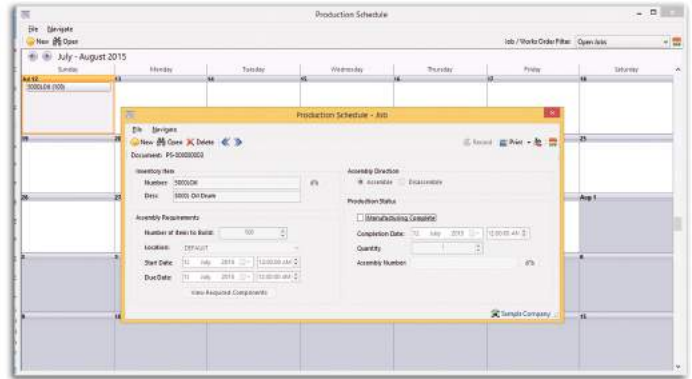
You can now manage the cost prices on Purchase documents and set an allowable variance with the ability to Allow, Warn or Block the variances. In addition we have the ability to drill down to the Previous Purchases of that specific Item in order to negotiate with your Vendors.

INVENTORY

ASSEMBLY

SCHEDULE CALENDAR

You can now add planned jobs to a Graphical Work Schedule in Calendar format that allows the production manager to view Jobs scheduled for a specific period such as day or month.

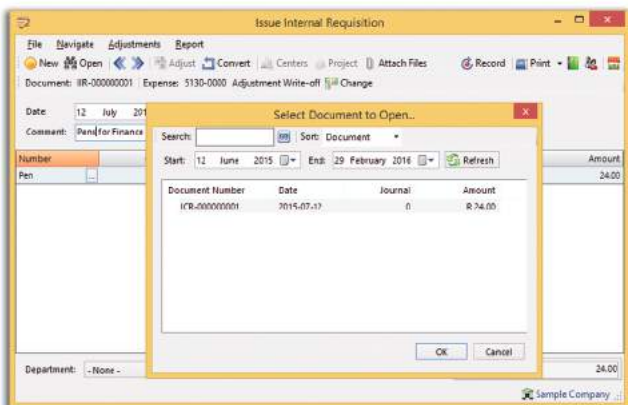


WORKS ORDER

A new works order function allows you to create a Works Order (or group of Assembly Jobs) from a Production Schedule, added Manually or Copied from a Sales Order. Copying from a Sales Order allows you to track the Customers Details throughout the manufacturing process. The purpose of the Works Order function is to allow you to print a bulk, or Combined Materials Issue for the store. If you refer to the screen you will see that we select the Item to Manufacture on top, with the components listed on the screen on the left for greater detail.

INVENTORY BUYOUTS

This function allows you to Buy and Sell non-standard items with the ability to assign the Cost of the Sale item on the fly at time of sale with the contra being assigned to the Buyout Control Account. When the item is purchased it is allocated to the same Buyout Control Account having a null effect in your accounts.



INTERNAL REQUISITIONS AND ISSUES

The Internal Requisition and Issue function allows employees to request Inventory for Internal Consumption, with these costs being allocated to a specified cost account. The fact that this is a 2-step process facilitates the request / approval process with a Requisition being printed for better Store control. In addition you also post the Costs to Projects.

INVENTORY

INVENTORY ADJUSTMENT ALLOCATIONS TO PROJECTS

We can now assign Inventory Adjustment costs to Projects much in the same way that we allocate the Inventory Requisitions and Issues.

DISPLAY NEGATIVE ON HAND INVENTORY ITEMS ON CONTROL PANEL SETTINGS

You can view the negative on hand items in the Control Panel Inventory Tab under the Allow / Disallow negative inventory on hand updates, and export this list to excel for ease of analysis.

Part Number	Barcode	Priority	Last received Cost	Category	Available	Inactive	Allocated	On Hand	Purchase Cr.	Inventory Value
51850		REGULAR	0	DEFAULT	0		0	0	0	R 0.00
52018		REGULAR	0	DEFAULT	0		0	0	0	R 0.00
52016		REGULAR	0	DEFAULT	0		0	0	0	R 0.00
53020		REGULAR	0	DEFAULT	0		0	0	0	R 0.00
53040		REGULAR	0	DEFAULT	0		0	0	0	R 0.00
54025		REGULAR	0	DEFAULT	0		0	0	0	R 0.00
54045		REGULAR	0	DEFAULT	0		0	0	0	R 0.00
58025		REGULAR	0	DEFAULT	0		0	0	0	R 0.00
59025		REGULAR	0	DEFAULT	0		0	0	0	R 0.00
310700		REGULAR	31	DEFAULT	0		0	0	0	R 0.00
52090		REGULAR	90	DEFAULT	0		0	0	0	R 0.00
51020		REGULAR	122	DEFAULT	0		0	0	0	R 0.00
53090		REGULAR	122	DEFAULT	0		0	0	0	R 0.00
55015		REGULAR	122	DEFAULT	0		0	0	0	R 0.00
10091		REGULAR	129	DEFAULT	0		0	0	0	R 0.00
100700		REGULAR	4,000	DEFAULT	0		0	0	0	R 0.00

INVENTORY PICKER ENHANCEMENTS

The inventory picker has been enhanced from a speed point of view, and we have added the ability to filter by Location, show any combination of Inventory, Services, Buyouts and Journal Items, as well as display the quantities with No Decimals, 4 Decimals of the Items Default Qty Decimals.

CONTAINER ITEMS

This function allows you to manage your Container, or Packaging inventory more effectively, by setting the system to include one or more "Container Items" per quantity of the primary Item sold. In this example you will see that we have set the system to include a 20L Container for every 24 Packs of 1Kg Tomatoes sold.

Item	Location	Item Description	Pack Size
tomato-20	DEFAULT	20L Container	24.000000

Account Balance:	R 1,545.24
Open Orders:	R 0.00
Open Quotes:	R 139.00
Available Credit:	N/A

Once this is setup you simply select the Container Item Button or set this up to automatically invoke on Recording the originating sales document as seen in the screen.

INVENTORY REPACKAGING

This function complements the Item Weight Feature and governs the Inventory Repackaging function from both a Weight as well as a Lot (or Batch) number point of view by taking a primary quantity of items and repackaging this into one or more other items while ensuring that all waste is managed and that all lot numbering is kept intact.

Number	Location	Quantity	Description	Unit Weight	Total Weight	Series / Lot
20kg-Tomatoes-RAI	DEFAULT	30000	20kg Tomatoes - Branded	2.00	100.00	Assigned

PICK TICKETS BY LOCATION

We have added the option to set a pick ticket split/routing by location. This is advantageous in businesses where specific items are stored in different warehouses, such as a bulk store for larger items. Once activated this feature will create a pick ticket per location listed on the relevant Sales Order. In our example we have created a Sales Order SO-000000006 with 2 items for 2 separate Warehouses (Locations).

Document	Date	Required	User Name	Customer	Reference	Location	Department	Items	Remain	Status
<input checked="" type="checkbox"/> SO-000000006	2015-07-12	2015-07-19	Administrator	TST002		<MULTIPLE>		2	2	New
<input type="checkbox"/> SO-000000005	2015-07-12	2015-07-19	Administrator	TST002		DEFAULT		1	1	New
<input type="checkbox"/> SO-000000004	2015-07-12	2015-07-19	Administrator	TST002		DEFAULT		1	1	New
<input type="checkbox"/> SO-000000003	2015-07-10	2015-07-17	Administrator	TST001		DEFAULT		1	1	New
<input type="checkbox"/> SO-000000002	2015-07-06	2015-07-17	Administrator	TST001		DEFAULT		1	1	New
<input type="checkbox"/> SO-000000001	2015-03-01	2015-03-08	Administrator	TST002		DEFAULT		1	1	New

On the Print Pick Ticket Function below you will see that we now have 2 pick tickets for the same Sales Order number above.

Document	Date	Required	User Name	Customer	Reference	Order	Location	Department
<input type="checkbox"/> TK-000000002	2015-07-12	2015-07-19	Administrator	TST002		SO-000000006	LOCATION3	
<input type="checkbox"/> TK-000000001	2015-07-12	2015-07-19	Administrator	TST002		SO-000000006	LOCATION2	

Document	Date	Required	User Name	Customer	Reference	Location	Department	Items	Remain	Status
<input checked="" type="checkbox"/> SO-000000006	2015-07-12	2015-07-19	Administrator	TST002		<MULTIPLE>		2	2	Not Picked

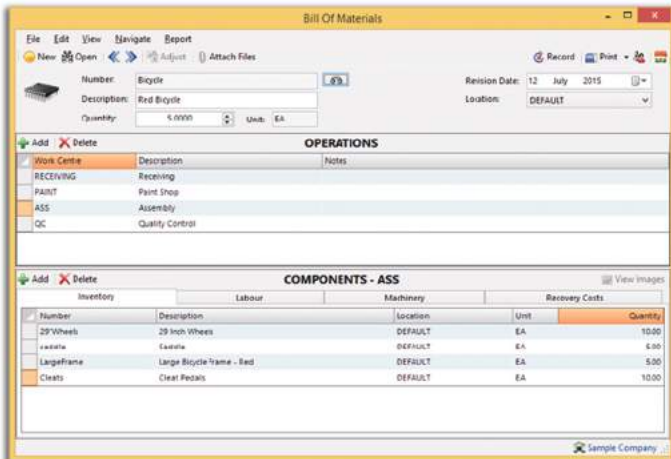
Document	FT Document	Date	Required	User Name	Cust	Reference	Location	Qty	Remain
SO-000000006	TK-000000001	2015-07-12	2015-07-19	Administrator	TST002		LOCATION2	1,0000	1,0000
SO-000000006	TK-000000002	2015-07-12	2015-07-19	Administrator	TST002		LOCATION3	2,0000	2,0000

DELIVERY METHODS FOR PICK TICKETS

A Delivery Method field has been added to the Sales Order Documents, that allows you to view and filter by delivery method during the Pick Ticket function. This is particularly useful when finalising orders for Delivery or to monitor on the status of Picked orders in a Counter-Sales environment. In the example on the left you will see the status of the Open Pick Tickets (Issues not Picked), filtered by the Delivery Method "Collection" with details of the items in the split panel below.



The Process Manufacturing feature is a new Module that works independently from the current Assembly Function found under the Inventory section in the Palladium Business and Enterprise editions. This feature allows you to Create Jobs, Setup Work Centres and Post Work in Progress in the form of Inventory, Service, Labour, Machinery and Overhead costs that will remove the Items from Stock and post to the WIP Account. On Closing a Job, the total costs get removed from WIP and the finished Goods get updated with the respective cost.



BILL OF MATERIALS

If you refer to the Bill of Material screen on the left, you will see that we have set a number of Work Centres in the form of steps, with the ability to Assign, or Issue, the Inventory, Labour, Machine Costs and Overhead Costs per Work Centre with the Variances being reported on a per Work Centre basis for optimal Cost Analysis and Variance control.

GENERAL

MICROSOFT POWER BI (BUSINESS INTELLIGENCE)

We have created a series of Power Business Intelligence Templates that will allow you to view specific information to your phone or mobile device using Microsoft's new Power BI. These data visualisation tools allow you to add custom graphs, dashboards, lists or indicators as you see fit and have them update on your device dynamically.



palladium
BUSINESS SOLUTIONS

Email: sales@palladium.co.za
Telephone: +27 (0)11 568 2900

