

56. Introducing Dynamics and Crescendo/Diminuendo

Jason Heath

pp - pianissimo (very soft)

mf - mezzo forte (moderately loud)

p - piano (soft)

f - forte (loud)

mp - mezzo piano (moderately soft)

ff - fortissimo (very loud)

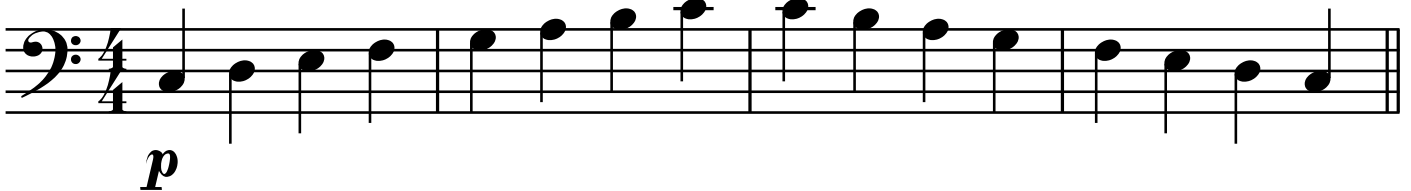
 - getting louder

 - getting quieter

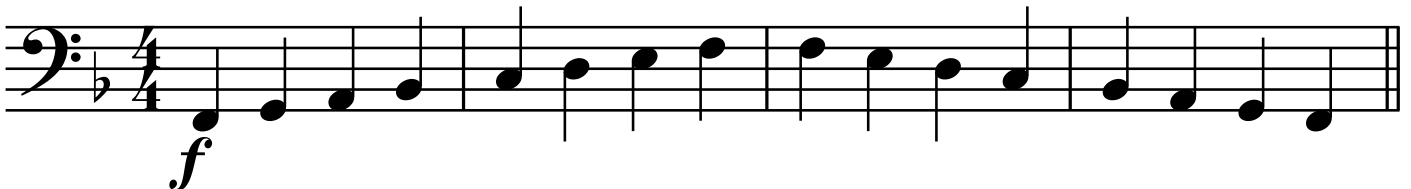
cresc. - crescendo (getting louder)

dim. - diminuendo (getting quieter)

00:53



01:22



02:11

