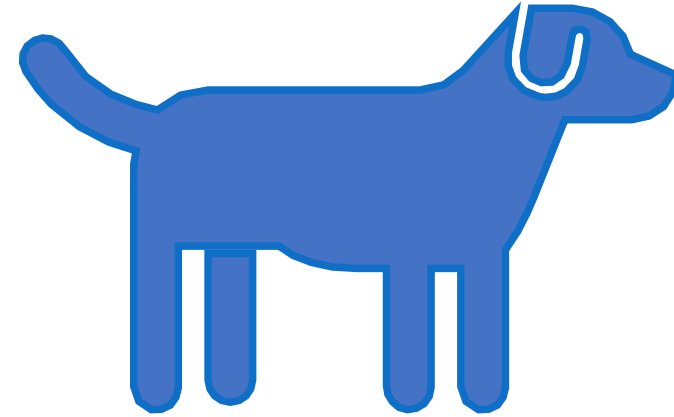




Deviant Dog  *to Dream Dog*



Puppy Pawfect



Welcome
your puppy
home.

Be very careful of the conflicting evidence that is online!

Trust your intuition to choose the information that suits you.

We're learning how to live in harmony with our pups.

Your pup can be just like a toddler, pups are sentient beings!



Puppies are sentient!

There are many similarities and parallels between our pups and toddlers.

Pups have their own needs and desires. They have their own personalities.

It's very important for our pup to feel secure; to be heard, accepted and understood.

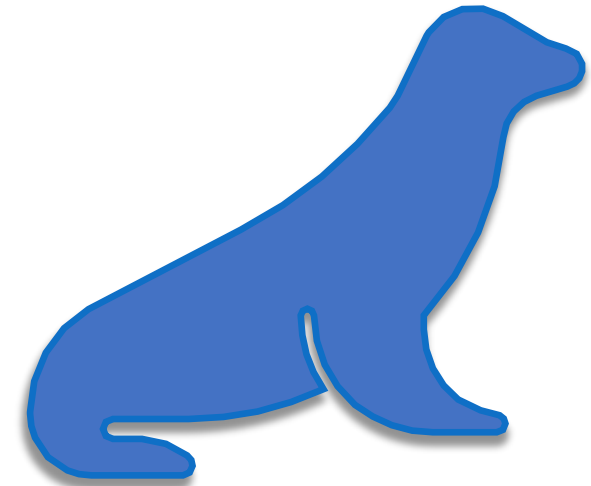
We need to be clear with our boundaries. We need patience and empathy.

We can role model calm leadership with our pup; just like we do as a parent.



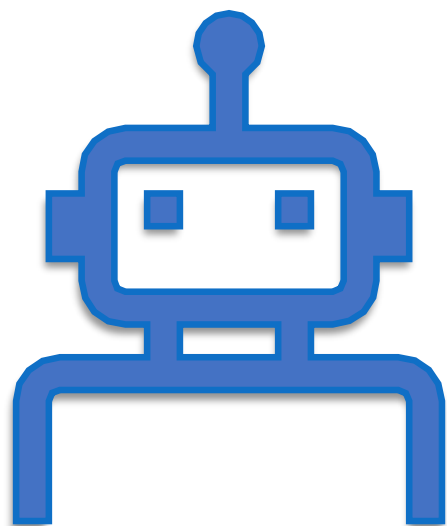
Exciting Event – You're expecting a puppy!

- ▶ You want the best for your pup; to provide a loving home and teach them the skills they need.
- ▶ You want them to be happy and healthy.
- ▶ It's likely you'll be anticipating the event with excitement.
- ▶ For our pup, it's a whole new world when they arrive in your home.
- ▶ Consider it as being like abducted by aliens and now living with them on their planet!
- ▶ Our pup has just left its litter siblings, its familiar environment and of course mum.
- ▶ Everything is new, strange and perhaps a bit scary.





Puppy preprogramming



- ▶ Pups have a great adaptive capacity to trust and love us as one of their own.
 - ▶ We do need to remember that there is still a trauma, loss, fear and stress and they have no idea of their role at this point in their life.
 - ▶ They can be overwhelmed, disorientated and distressed.



Puppy Proofing your Home



Clear any Cables



Consider removing any waste or rubbish the puppy may find interesting.



Beware of Cleaning Products!



Hide toys and small objects.



Check your house and garden plants for toxicity.

Supervise the pup when they're in the garden.

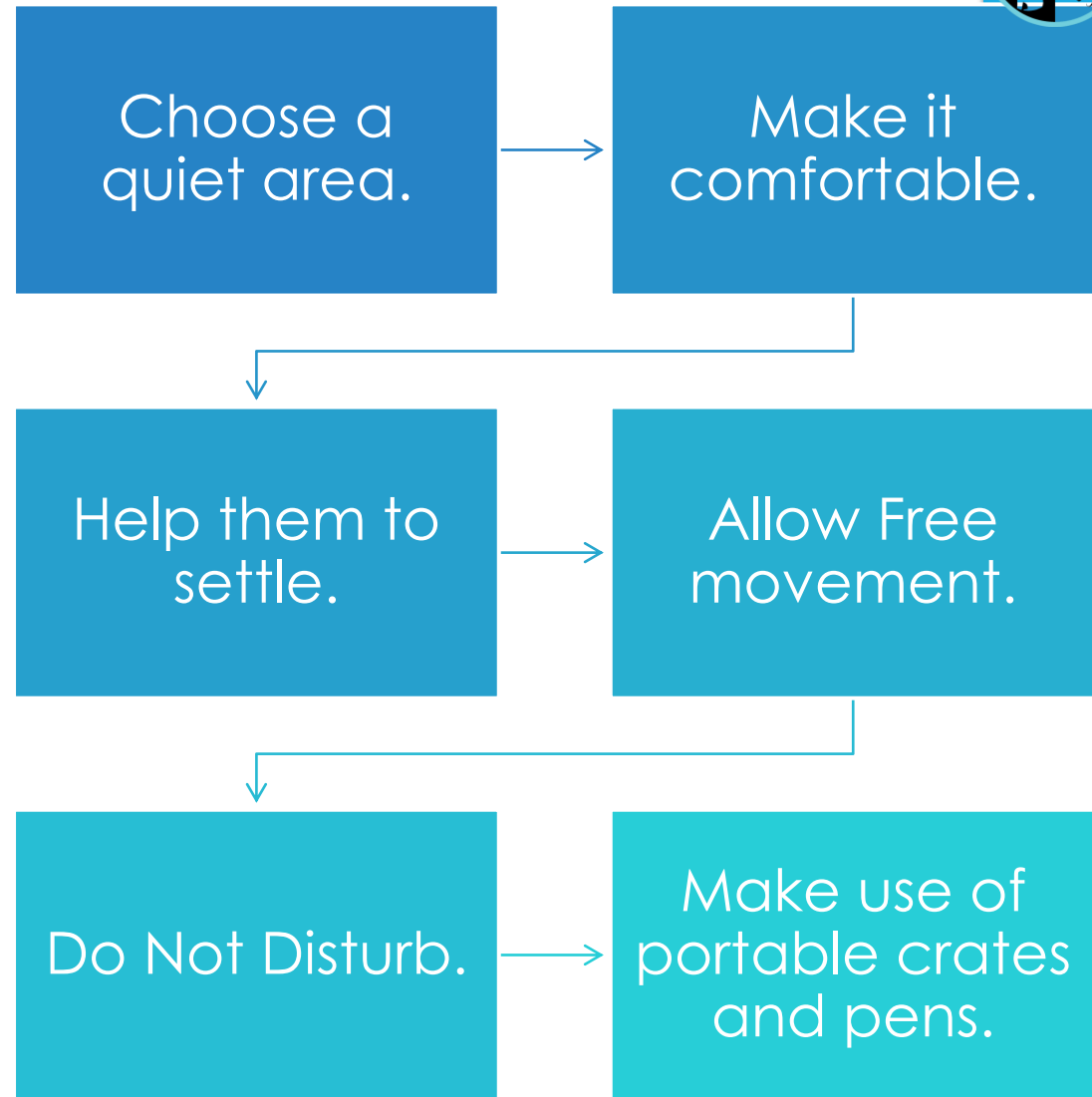


Management is Key!

If you can't supervise them, put them in a safe place where they are comfortable.



Creating a Safe Space





Introducing your puppy to home.

- ▶ Focus on the sleeping, the calm and bonding time.
- ▶ Short periods of play.
- ▶ A gentle introduction to other members of the household.
- ▶ Don't be in a hurry to introduce you new pup to other dog members of the family and young children.
 - ▶ We talk about this in chapter 2.1 (Multi-Dog Households) of our book, Deviant Dog to Dream Dog.
- ▶ Please don't rush out with your pup to show everybody or invite people into your homes to meet your pup.
 - ▶ It is best to keep introductions to a minimum initially.

Things that make you go hmmm...

If you have any questions or want to discuss anything during these presentations we can arrange one-to-one coaching calls or even discuss these in the live coaching sessions.

