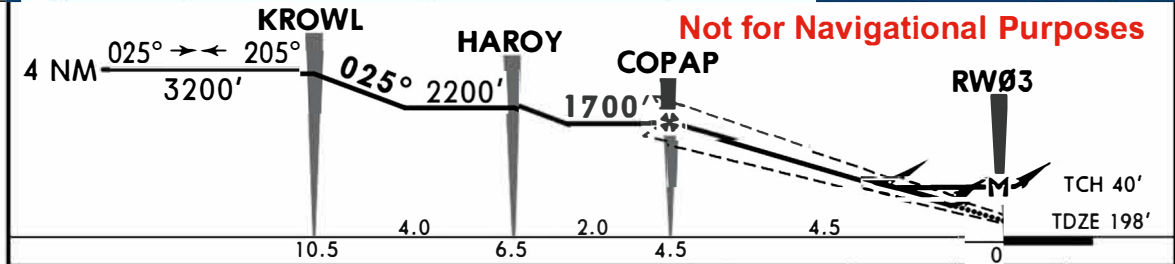
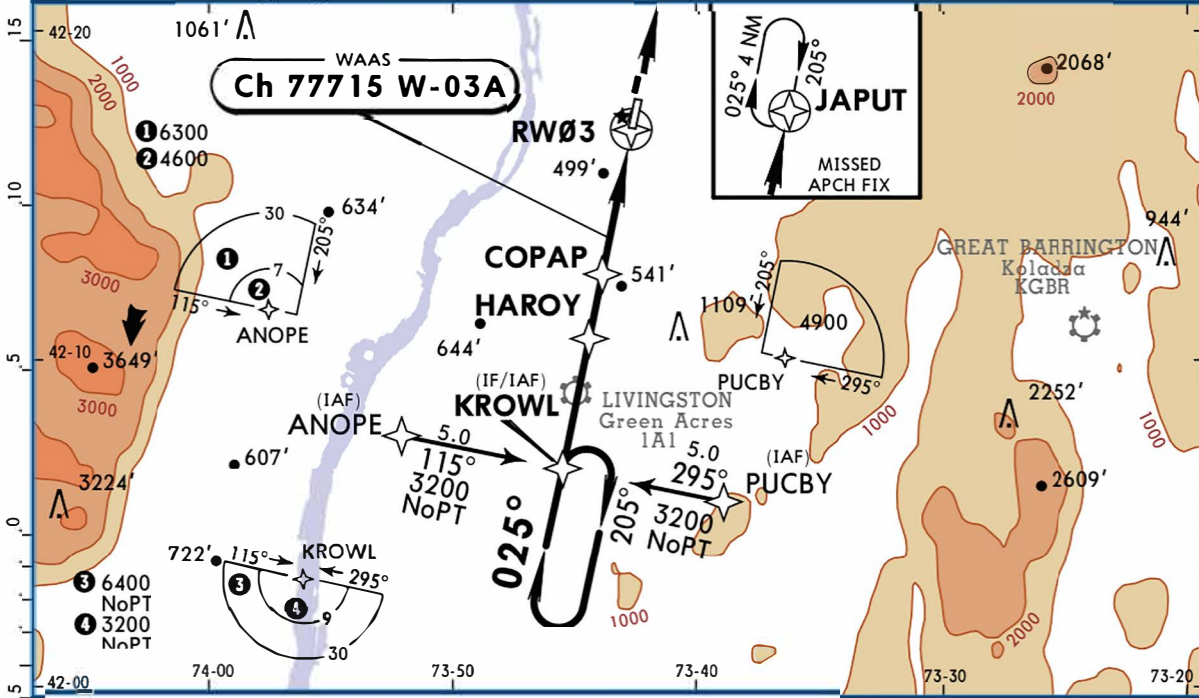


AWOS-3 133.525		ALBANY Approach (R) 132.825		COLUMBIA CO UNICOM CTAF 123.05	
WAAS <b>Ch 77715</b> W-03A	Final Apch Crs <b>025°</b>	Minimum Alt COPAP <b>1700'</b> (1502')	LPV DA(H) (CONDITIONAL) <b>500'</b> (302')	Apt Elev 198' TDZE 198'	TAA 30 NM IAF
<b>MISSED APCH:</b> Climb to 3200' direct JAPUT and hold, continue climb-in-hold to 3200'.					

**BRIEFING STRIP™**  
Alt Set: INCHES Trans level: FL 180 Trans alt: 18000'  
1. Use local altimeter setting; if not received, use Albany altimeter setting. 2. Baro-VNAV not authorized when using Albany altimeter setting. 3. For uncompensated Baro-VNAV systems, LNAV/VNAV not authorized below -15°C (5°F) or above 48°C (118°F). 4. DME/DME RNP-0.30 not authorized. 5. Helicopter visibility reduction below 3/4 SM not authorized. 6. Pilot controlled lighting 123.05.



Gnd speed-Kts	70	90	100	120	140	160	REIL PAPI-L	3200'	D	JAPUT
Glide Path Angle	3.00°	372	478	531	637	849				
LPV, LNAV/VNAV: MAP at DA										
LNAV: MAP at RW03										

	STRAIGHT-IN LANDING RWY 3 With Local Altimeter Setting			CIRCLE-TO-LAND With Local Altimeter Setting	
	LPV DA(H) 500' (302')	LNAV/VNAV DA(H) 842' (644')	LNAV MDA(H) 760' (562')	Max Kts	MDA(H)
A			1	90	760' (562') -1
B	1	2 1/4	1 1/2	120	820' (622') -1
C			1 3/4	140	860' (662') -1 3/4
D				165	920' (722') -2 1/4
	With Albany Altimeter Setting			With Albany Altimeter Setting	
	LPV DA(H) 576' (378')	LNAV/VNAV DA(H) 918' (720')	LNAV MDA(H) 840' (642')	Max Kts	MDA(H)
A			1	90	840' (642') -1
B	1 1/4	2 1/2	1 3/4	120	900' (702') -1
C			2	140	940' (742') -2 1/4
D				165	1000' (802') -2 1/2

TERPS AMEND 0B 17 SEP 2015