

# Make your own lute activity sheet

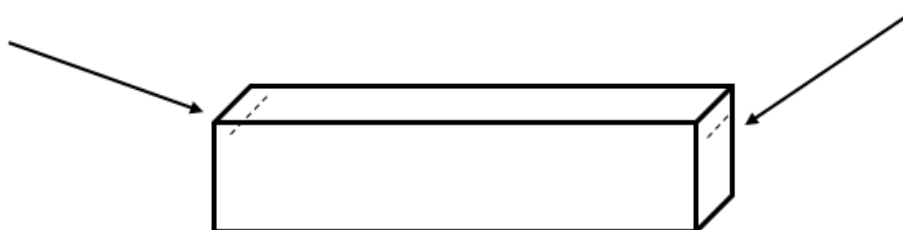
To make your own lute you will need the following:

- For the main body - A small cardboard box (which is less than the length of the ruler)
- For the bridge - A small rectangular piece card
- For the fret - A wooden ruler (or something similar)
- For the strings - two or three rubber bands (that will fit around the length of the ruler with a little bit of give in the stretch of the band)
- Scissors
- Tape
- Stickers for decoration



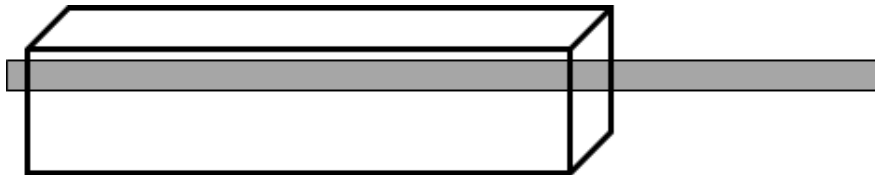
## Instructions:

1. Make two slots at either end of your cardboard.

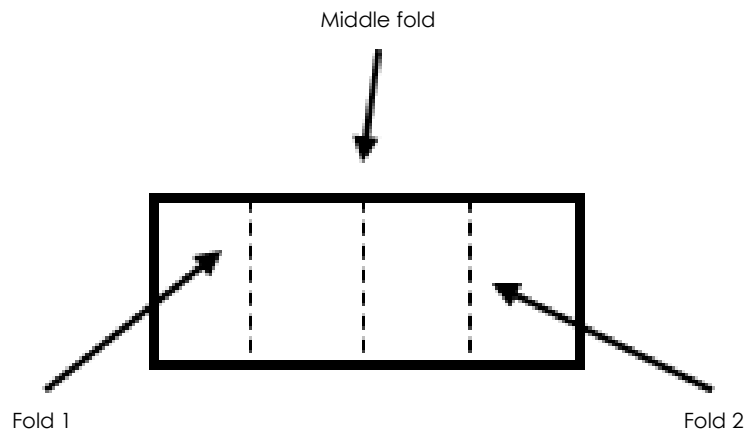


# Make your own lute activity sheet

2. Slide the ruler through the slots and secure with tape.

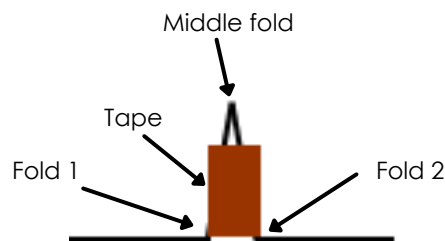


3. Make a 'bridge' for your lute by folding the small rectangular piece of cardboard three times to make a zigzag.



# Make your own lute activity sheet

4. Tape the 'bridge' in an upside down 'T' shape, leaving the tall part of the 'T' free from tape.



5. Depending on how many rubber bands you are using, make two or three slits on the top of the 'bridge'.

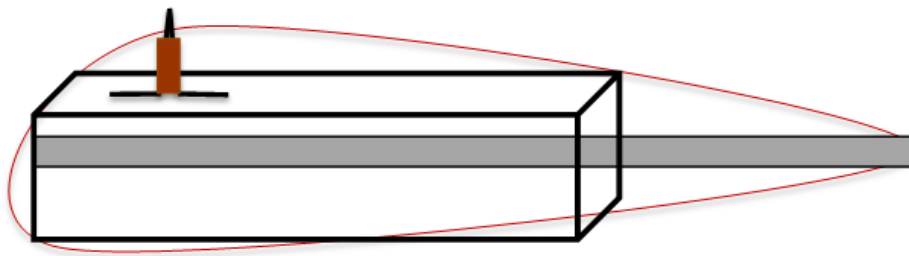


6. Tape the 'bridge' to the top of the box.



# Make your own lute activity sheet

7. Stretch the elastic bands around the box and ruler and through the slits of the bridge, so the bands fit tightly without breaking.



8. Now play your lute.

