



Part 107 Study Flashcards



Print



Train



Enjoy

Print double sided to get the answer on the back of the card.

This page is intentionally blank



1.

A person whose task is to keep an eye on the sUAS and its surroundings, and report any potential hazards to the rest of the crew, is referred to as the:



2.

While out flying a commercial mission, your sUAS crashes and causes a bystander to lose consciousness. When are you required to report the accident?



3.

According to the FAA, Civil Twilight is defined as:



4.

What is the maximum weight of a drone that can be classified as a small unmanned aircraft system (sUAS)?

2. Answer

Within 10 days of the accident

1. Answer

Visual observer

4. Answer

Up to, be not including, 55 lbs.

3. Answer

**30 minutes before official sunrise and
30 minutes after official sunset**



5.

After consuming any amount of alcohol, how long should you wait before you are legally allowed to operate an sUAS?



6.

When flying during civil twilight, what accessories should your drone have before you can fly legally?



7.

If your sUAS is not outfitted with any anti-collision lighting, how early in the morning can you start flying it?



8.

What vision aids can a Remote PIC or a Visual Observer use to help them maintain visual line-of-sight (VLOS) while flying an sUAS?

6. Answer

Anti-collision lighting

5. Answer

At least 8 hours

8 Answer

None. VLOS must be maintained with no visual aids.

7. Answer

At sunrise



9.

Operating an sUAS from a moving land or water vehicle is permitted only under what conditions?



10.

Who has the final authority and direct responsibility when conducting any sUAS operations?



11.

After receiving the Part 107 Remote Pilot Certificate, how often are you required to complete the recurrent exam to continue enjoying the privileges of the certificate?



12.

While operating your sUAS below 200 feet altitude, you catch sight of a helicopter flying towards your general direction. What should you do?

10. Answer

The Remote PIC

9. Answer

When the sUAS is flown over sparsely populated areas

12. Answer

Yield right of way to the helicopter.

11. Answer

Every 24 calendar months from the last written exam



13.

You are tasked to do a survey of a solar farm to look for damaged panels. However, the solar farm falls within Class C airspace because of a nearby airport. What should you do before flying your sUAS?



14.

In what class of controlled airspace can Part 107-licensed drone pilots fly without securing authorization from ATC?



15.

A flight data center can issue a restriction against flight over temporarily hazardous areas, such as concerts or sports events with huge crowds. What are these advisories called?



16.

Airports, flight data centers, and other pilots can issue informational advisories and have them distributed by the FAA to the public. This is a reliable way for pilots to be informed about events that could compromise the safety of their flight. What are these advisories called?

14. Answer

Class E airspace (except E2)

13. Answer

Get FAA approval through the LAANC system or via the FAA DroneZone.

16. Answer

Notice to Airmen (NOTAM)

15. Answer

Temporary Flight Restrictions (TFR)



17.

While reviewing a sectional chart, you notice that a nearby Congressional building had been indicated with a P-40 code. What does the "P" prefix stand for?



18.

You find yourself flying your sUAS in an open area in uncontrolled airspace with no nearby buildings or other tall structures. Up to what altitude are you allowed to fly your sUAS?



19.

A pilot with a Part 107 Remote Pilot Certificate has decided to relocate and will have a permanent change of address. What must he do to continue exercising the privileges of the Remote Pilot Certificate?



20.

What are the characteristics of a moist and unstable air mass?

18. Answer

400 feet above ground level (AGL)

17. Answer

Prohibited area

20. Answer

Any of the following answers are acceptable – Cumuliform clouds, turbulence, showery precipitation, good visibility

19. Answer

Inform the FAA of the change of address within 30 days

21.



(Refer to image) What does this symbol denote when found in a sectional chart?

22.

What is the term for the highly abbreviated weather reports that are transmitted throughout the aviation industry?

23.

According to the following METAR, what are the prevailing visibility conditions? METAR KJFK 162251Z COR 16007KT 10SM +RA FEW055 SCT190 BKN260 26/13 A2982 RMK AO2 SLP098 T02610128

24.

What should be the minimum visibility when you conduct sUAS operations?

22. Answer

Meteorological Terminal Aviation Routine
Weather Report (METAR)

21. Answer

Man-made obstacles above 1000' AGL

24. Answer

3 statute miles

23. Answer

10 statute miles



25.

What is the maximum allowable groundspeed when flying an sUAS?



26.

You have been asked to capture photos of the skyline from the vantage point at the top of a 100-foot building. If you will only fly your drone within 400 feet of the building, up to what altitude can you fly your drone?



27.

At what bank angle does the load factor of a drone start to increase dramatically?



28.

What is the condition caused by a low level of carbon dioxide in the blood, and can result in lightheadedness and/or visual impairment?

26. Answer

500 feet above ground level (AGL) as long as you remain outside of controlled airspace

25. Answer

100 mph or 87 knots

28. Answer

Hyperventilation

27. Answer

60°



29.

What is the systematic approach that aviation professionals use when assessing the risks in a situation and coming up with the best possible course of action?



30.

Upon consulting a mobile app that displays live sectional charts, you find that the area you are in has been bounded by a circle and labelled with "A-201." What does the "A" prefix denote and what should you do?



31.

Right before starting a real estate shoot, you check the weather report and find that the base of the clouds is at 800 feet above ground level (AGL). Under these conditions, up to what altitude can you legally fly your sUAS?



32.

How old must you be to be eligible to receive a Part 107 Remote Pilot Certificate?

30. Answer

You are in an Alert Area and should fly with extreme caution

29. Answer

Aeronautical Decision Making (ADM)

32. Answer

16 years

31. Answer

300 feet AGL. You must remain 500 feet below the base of the clouds



33.

A pilot with a current Part 61 Certificate can earn a Part 107 license by completing an online training course. What qualified a Part 61 Certificate holder as CURRENT?



34.

If an applicant takes and fails the Part 107 knowledge test, how long must they wait before they can reapply to take the test again?



35.

While putting together your drone, you start to observe the formation of cumulonimbus clouds. What do you expect will weather conditions be in a few minutes?



36.

What is the possible consequence of the refusal of Part 107-licensed drone pilot to undergo a blood alcohol test by a law enforcement officer?

34. Answer

14 days

33. Answer

**He must have completed a flight review
in the last 24 months**

36. Answer

Revocation of the Remote Pilot Certificate

35. Answer

**Any of the following answers are
acceptable – turbulent, thunderstorms,
strong drafts, lighting, high amount of
precipitation**



37.

What is the maximum number of drones that one remote PIC can fly simultaneously?



38.

Due to uncontrollable circumstances, your drone has crashed into your neighbor's car while you're out doing commercial photography. What is the threshold cash value of the property damage that requires you to report the accident to the FAA?



39.

When flying your drone during twilight with anti-collision lighting, what is the minimum visibility required to be maintained for the anti-collision lights?



40.

What is the airspace class that extends from 18,000 feet MSL up to 60,000 feet MSL?

38. Answer

500

37. Answer

One

40. Answer

Class A airspace

39. Answer

3 statute miles

41.



Upon consulting a sectional chart, you notice that the quadrant you are in is labeled by the Maximum Elevation Figure (MEF) as indicated below. What is the maximum elevation in a quadrant with the following label?

42.

Using the load factor curve, estimate the g-force that a 30-lb. drone will experience when it makes a turn with 60° bank angle.

43.

During which month was the following NOTAM issued? !IKK 06/098 ZAU OBST WIND TURBINE FARM WITHIN AREA DEFINED AS 2.5NM RADIUS OF 414105N0890743W (9.8NM NE C82) 1424FT (264FT AGL) NOT LGTD 1502051656-1512312359EST

44.

What is the effect in drone performance of an increase in temperature, given that pressure and humidity remain constant?

42. Answer

About 60 lbs.

41. Answer

7,900 feet

44. Answer

**An increase in temperature decreases
or degrades drone performance**

43. Answer

June



45.

The IMSAFE checklist is a handy way of remembering the factors that negatively affect the judgment and decision of a drone pilot. What does the "S" stand for in IMSAFE?



46.

The FAA recommends that commercial drone pilots follow a scheduled maintenance plan for your drone. What is the best maintenance plan to adopt for your particular drone?



47.

What procedure should a Remote PIC or Visual Observer follow when scanning the immediate airspace for hazards?



48.



What is the height of the obstacle represented by the following symbol in both above ground level (AGL) and above sea level (MSL) references?

46. Answer

The maintenance plan formulated by the manufacturer, including the maintenance schedule and procedures.

45. Answer

Stress

48. Answer

4476 feet MSL and 315 feet AGL

47. Answer

Focus on different segments of the sky and switching between them after short intervals



49.

In keeping record of drone flight logs, does the FAA prefer that commercial drone pilots keep them in electronic format or in physical logbooks?



50.

When does the Remote Pilot Certificate expire?



51.

More than 8 hours have passed since your last intake of alcohol, but you are still feeling a little dizzy and lightheaded. How soon can you start flying a drone?



52.

What is the period of validity of the NOTAM quoted below? !IKK 02/098 ZAU OBST WIND TURBINE FARM WITHIN AREA DEFINED AS 2.5NM RADIUS OF 414105N0890743W (9.8NM NE C82) 1424FT (264FT AGL) NOT LGTD 2010051200-2212252359EST

50. Answer

The Remote Pilot Certificate does not expire. However, it can be revoked or suspended as the appropriate authorities seem fit.

49. Answer

The FAA imposes no requirement on how commercial drone pilots keep their flight logs. Electronic flight logs and logs kept in physical logbooks are equally valid.

52. Answer

From October 5, 2020 12:00H to December 25, 2022 23:59H

51. Answer

When you can no longer feel the influence of alcohol and are no longer physically or mentally impaired

53.

This type of weather advisory is transmitted in the event of severe thunderstorms or surface winds greater than 50 knots

54.

This type of weather advisory is issued for the five statute miles radius around an airport. They are usually valid for 24 to 30 hours and are updated four times a day.

55.

Give the current temperature and dew point for the METAR quoted below: METAR KJFK 162251Z COR 16007KT 10SM +RA FEW055 SCT190 BKN260 24/10 A2982 RMK AO2 SLP098 T02610128



56.

What is the ceiling of the controlled airspace at Collin Co Rgl McKinney (TKI)?

54. Answer

Terminal Aerodrome Forecasts (TAF)

53. Answer

Convective Significant Meteorological (SIG-MET) Information

56. Answer

2900 feet MSL

55. Answer

Current temperature is 24 °C, dew point is 10 °C

57.

When mounting cameras or other equipment on an sUAS, what is the most important thing to consider?

58.



What type of area is enclosed by the magenta border with a hash pattern and labelled "BENNING MOA"?

59.

What is the effect on propeller efficiency when flying a drone at a higher density altitude?

60.



What do these symbols stand for when you see them in sectional charts?

58. Answer

Military Operating Area

57. Answer

That they do not adversely affect the center of gravity

60. Answer

Lighted obstacles

59. Answer

Propeller efficiency is decreased.

61.

The PAVE checklist is a decision-making tool used to help pilots identify potential risk factors. What do the letters in PAVE stand for?

62.

Symbols that represents airports in sectional charts are colored with either blue or magenta. What does this color difference indicate?

63.



What can you say about an airport represented by the following symbol?

64.



What Common Traffic Advisory Frequency (CTAF) should you tune into if you want to know the air traffic around Garrison Airport?

62. Answer

Magenta airports are those that do not have control towers, while blue airports have at least part-time operating control towers.

61. Answer

Pilot-in-command, Aircraft, environment, and External Pressures

64. Answer

122.9

63. Answer

The airport does not have a hard-surfaced runway (empty inside the symbol).

65.



Describe the type and height of obstacle that the following symbol represents?

66.



A Class B airspace has been labeled with the following number indicator. What does it mean?

67.



What can you say about the airport represented by the following symbol?

68.



What type of in-air hazard should be you look out for when you see the following symbol in your immediate area?

66. Answer

The coverage of the Class B airspace is from 8000 feet MSL up to 9000 feet MSL.

65. Answer

A group obstacle where the height of the highest obstacle is 2317 MSL or 380 AGL

68. Answer

This symbol indicates that gliders operate in the area. Take note that they have right of way.

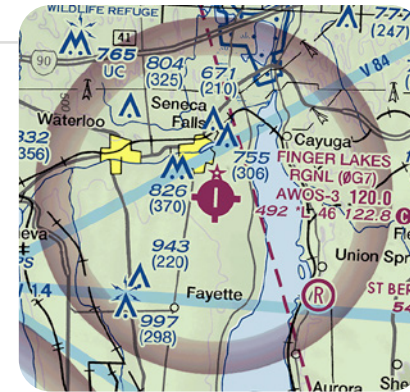
67. Answer

This is an uncontrolled airport that offers fuel services and has a beacon from sunset to sunrise.

69.

What is the wind direction and speed of the conditions described by the following METAR? METAR KJFK 162251Z COR 12009KT 10SM +RA FEW055 SCT190 BKN260 26/13 A2982 RMK AO2 SLP098 T02610128

70.



What type of airspace covers the Finger Lakes Regional Airport?

71.

Describe the weather conditions indicated by the code "-SHRAFG" if you read it on a METAR.

72.

At what times of the day are TAF reports typically updated?

70. Answer

Class E airspace with floor at 700 feet AGL

69. Answer

The wind is coming from a SE direction (120°) and has a speed of 9 knots.

72. Answer

0000H, 0600H, 1200H, and 1800H

71. Answer

The current weather can be characterized by light rain showers accompanied with fog.



73.

A fixed wing aircraft may experience a sudden loss of lift as it approaches higher bank angles. What is this phenomenon called?



74.

While surveying a tower that is 1200 feet high, you notice a layer of clouds moving in. How far away horizontally do you need to stay away from the layer of clouds?



75.

What is the blood alcohol threshold that you should not exceed before operating an sUAS?



76.

How often should a Remote PIC inspect his sUAS to ensure that it is in a condition fit for safe operation?

74. Answer

2000 feet

73. Answer

Stalling

76. Answer

Before each flight

75. Answer

0.04%

77.

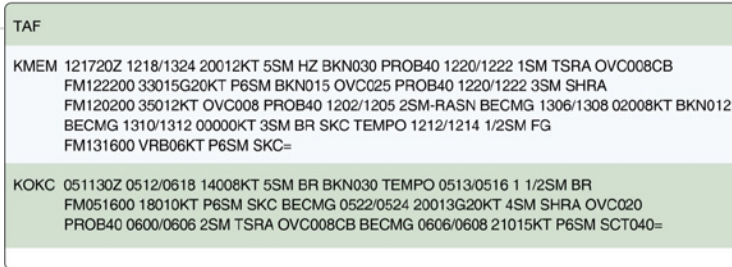


Figure 15. Terminal Aerodrome Forecasts (TAF).

On what day was the TAF for KMEM issued according to the figure below?

78.

What is the hazardous attitude exhibited by sUAS pilots who believe that accidents will not happen to them?

79.

What is the hazardous attitude exhibited by an sUAS pilot who constantly showboats and resorts to risky stunts to impress an audience?

80.

According to a weather outlook that you have received, you can expect a low-temperature inversion with high relative humidity for the time of your planned flight. What conditions should you expect out in the field?

78. Answer

Invulnerability

77. Answer

The 12th day of the current month

80. Answer

**Clouds, fog, or haze - generally poor
visibility**

79. Answer

Machismo

81.

What is the term for sudden changes in wind speed or direction that can create violent updrafts and downdrafts, and can result in loss of control of your sUAS?



82.

What class of airspace surrounds the Southern California Logistics Airport?

83.

Describe the cloud conditions indicated by the following code, should you find it in a METAR: CLR010 SCT090 OVC150

84.



What kind of airport is represented by the following symbol?

82. Answer

Class D airspace from the surface to 5400 feet MSL

81. Answer

Wind shear

84. Answer

An abandoned airport

83. Answer

Clear skies at 1000 feet, scatter clouds at 9000 feet, and completely overcast at 15000 feet.



85.

What are the best guidelines for the handling and charging of your drone's Li-Po batteries?



86.

Based on the following METAR, what is the current barometer pressure at sea level? METAR KJFK 162251Z COR 16007KT 10SM +RA FEW055 SCT190 BKN260 26/13 A2996 RMK AO2 SLP098 T02610128



87.

What should you do if a SIGMET report was issued for the time and date of your planned drone flight mission?



88.

While reviewing sectional charts, you come upon Restricted Area R-6406 and want to know more details about it. Where can you look for additional information?

86. Answer

29.96 "Hg

85. Answer

Follow the battery manufacturer's recommendations for charging and handling

88. Answer

In the 'Notes to Sectional Charts' section

87. Answer

Cancel your plans. A SIGMET is issued as a warning of possible thunderstorms and strong winds.

89.

This is a part or a type of decision-making that requires awareness and good judgment to recognize and reduce risks during a flight.

90.

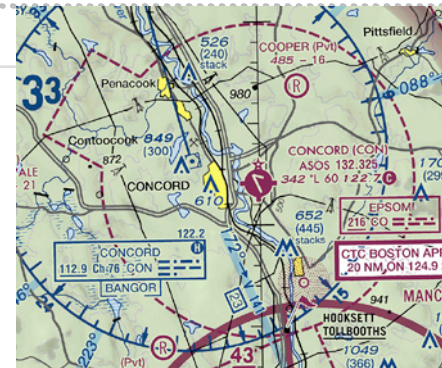
At what altitude should you be wary of wind shear happening?

91.



While flying near the Cooperstown Airport, you hear an announcement of an aircraft arriving midfield right downwind of runway 13. Where would the aircraft be relative to the runway?

92.



Describe the airspace classification of the area surrounding the Concord Regional Airport.

90. Answer

At any altitude

89. Answer

Risk Management

92. Answer

It is a Class E airspace from the surface

91. Answer

Southwest of the runway

93.

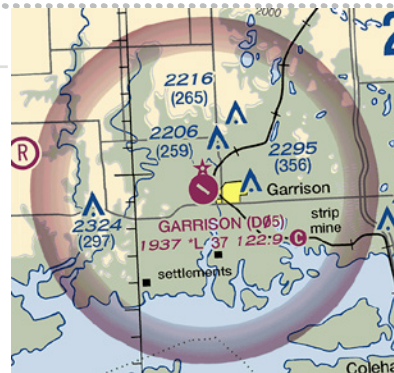
When you're flying with a crew, it is essential that all crew members have a meeting prior to the mission to discuss the objectives, what to expect, and what hazards to look out for. Each member must also be aware of the role they play. This is an example of:

94.

This is the term for the boundary between two air masses where a warm mass advances and replaces a body of cold air. This body moves slowly, typically between 10 to 25 mph.

95.

You have been hired to use your drone to inspect the east side of a ten-story building. During the course of inspection, winds at the west side of the building start to become more intense. What might you expect are the conditions on the east side of the building?



96.

Describe the airport represented by the following symbol:

94. Answer

Warm front

93. Answer

Crew Resource Management (CRM)

96. Answer

It is an uncontrolled airport with only one runway and has a sunset to sunrise beacon.

95. Answer

The winds from the west side are likely to flow over the building and flow downwards on the east side, creating a strong rolling turbulence.



97.

According to a METAR, the temperature and dew point forecast will be "25/24" for the time of your planned mission, with little to no wind. What conditions might you expect in the field?



98.

While out conducting a survey of a large farm, you start to notice the formation of cumulonimbus clouds right above you. What might this indicate and what is the best course of action?



99.

What are the possible consequences of an overloaded or improperly loaded sUAS?



100.

In the sectional chart below, an arrow pointing south is labeled "IR252" What does this symbol represent?

98. Answer

Cumulonimbus clouds are indicators of a coming thunderstorm. The best thing to do is to suspend the mission.

97. Answer

Poor visibility due to fog formation

100. Answer

A military training route

99. Answer

Any of the following are acceptable answers – Reduced rate of climb, lower maximum altitude, shorter range, reduced speed, reduced maneuverability, more prone to stalling, loss of control

101.



What is the floor of controlled airspace around the Durant Regional Airport in MSL?



102.

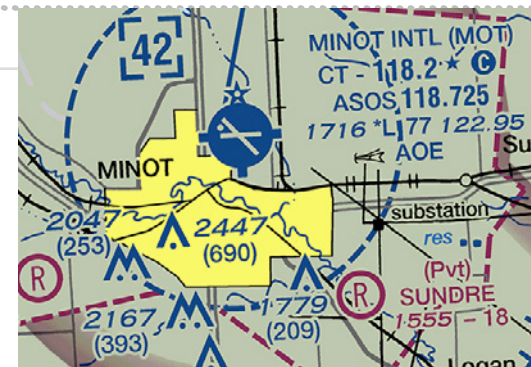
When requesting for a Part 107 waiver, how many days prior to the operation should the required documents be submitted to the FAA?

103.



While out flying on a dry and sunny day, you start to feel symptoms of dehydration due to prolonged exposure to high temperatures. What is this condition called?

104.



What is the three-letter identifier of the Minot International Airport?

102. Answer

90 days

101. Answer

1399 MSL (700 feet AGL + 699 feet elevation)

104. Answer

MOT

103. Answer

Heatstroke