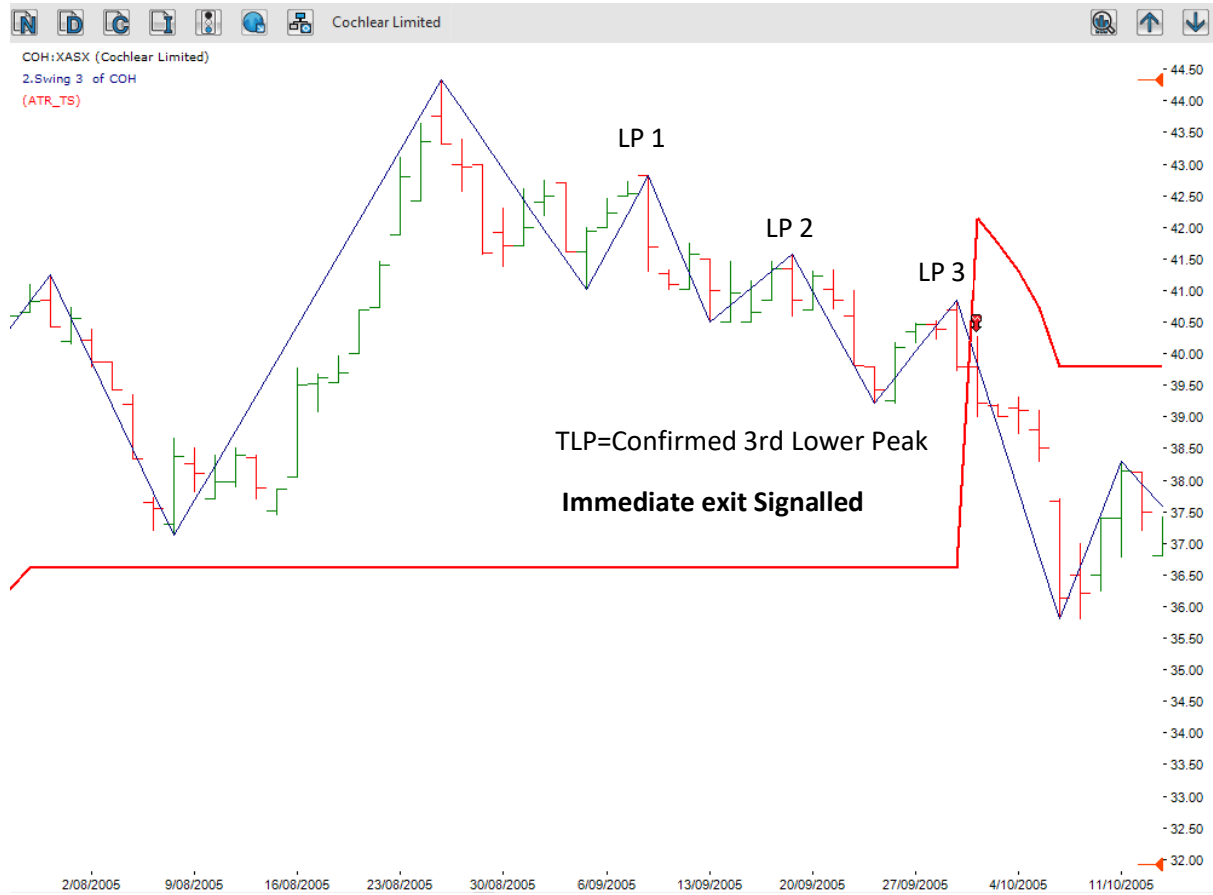


SPA3 Investor Exit signals

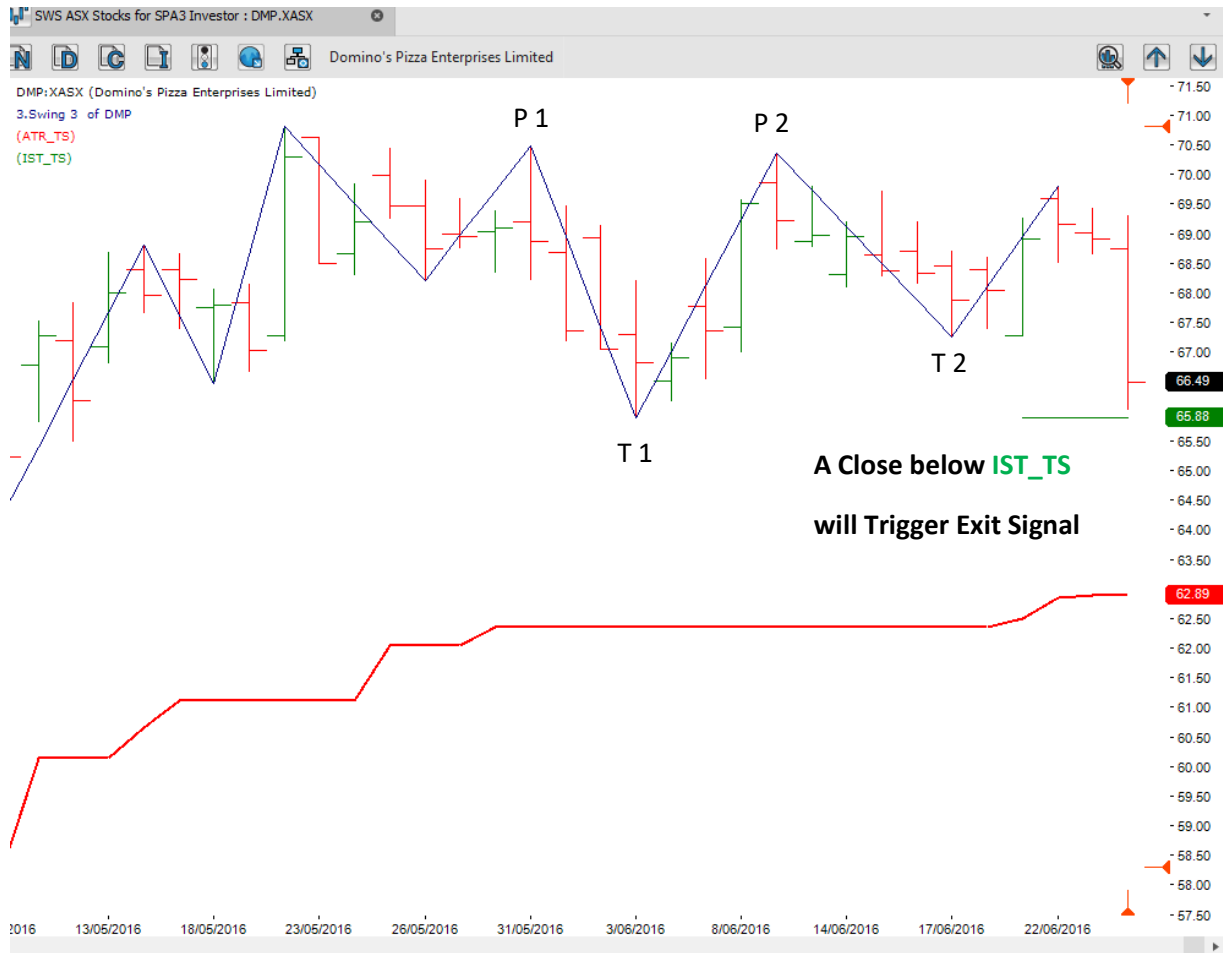
TLP = Confirmed 3rd Lower Peak & immediate exit



IST = inside swing trough

Formation of a higher trough after lower Peaks have formed

Higher trough confirmed after lower peaks. **IST_TS** now Active at the lower of the 2 Troughs

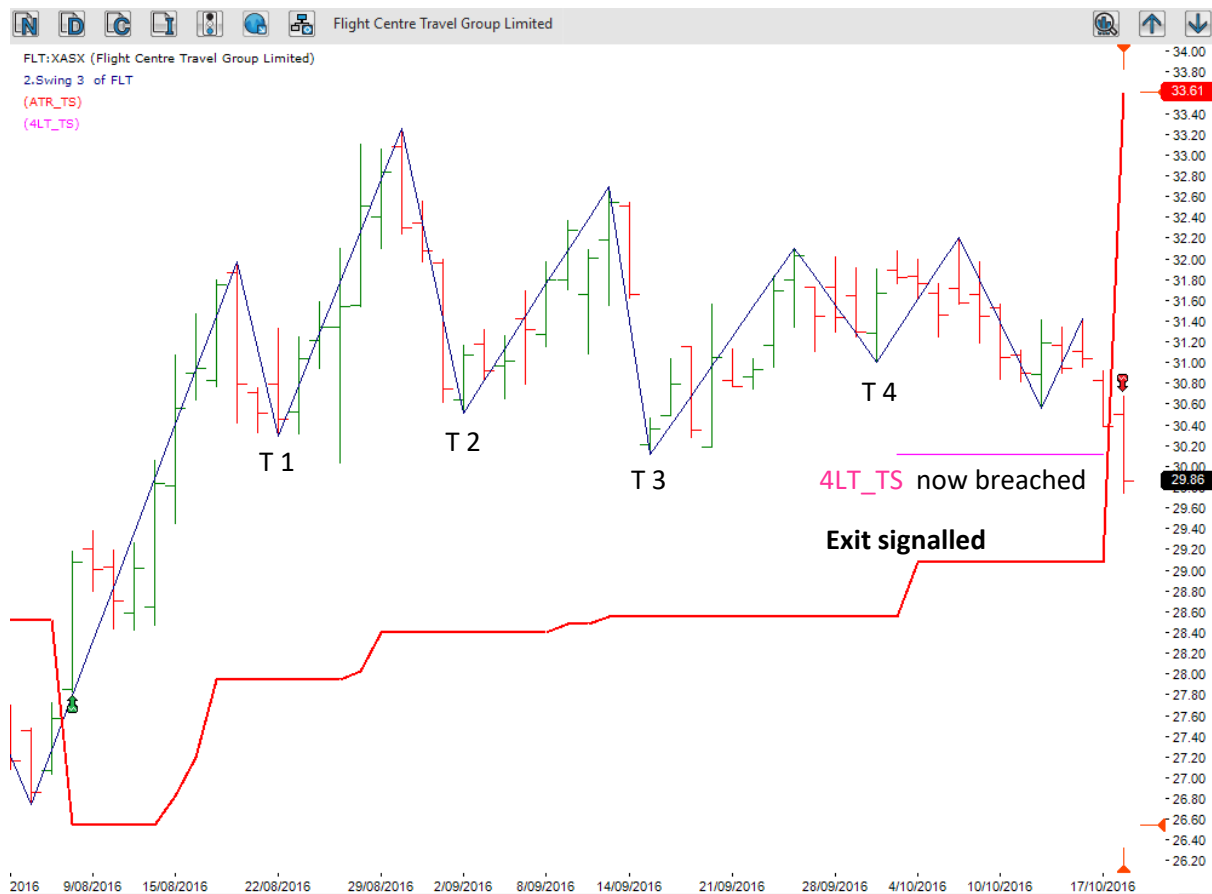


ISL = Initial Stop Loss

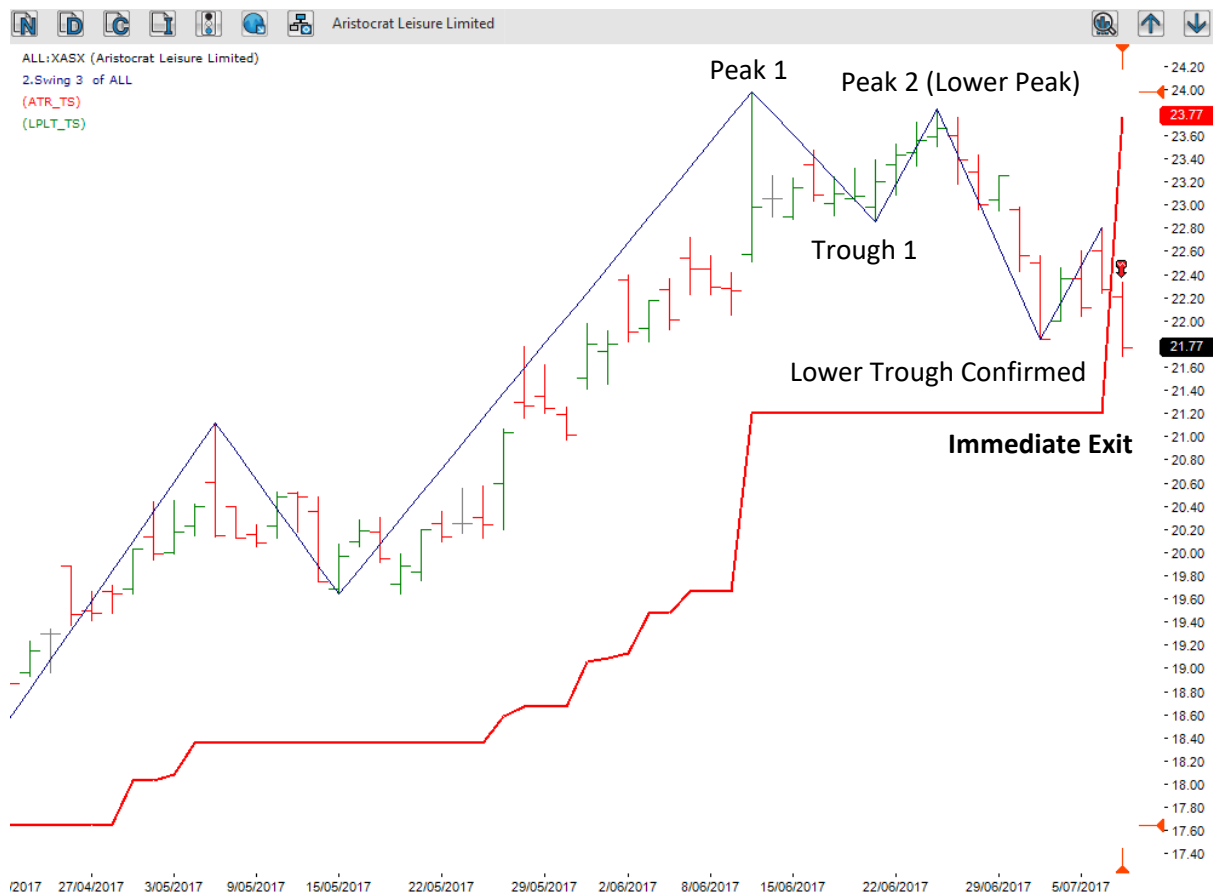
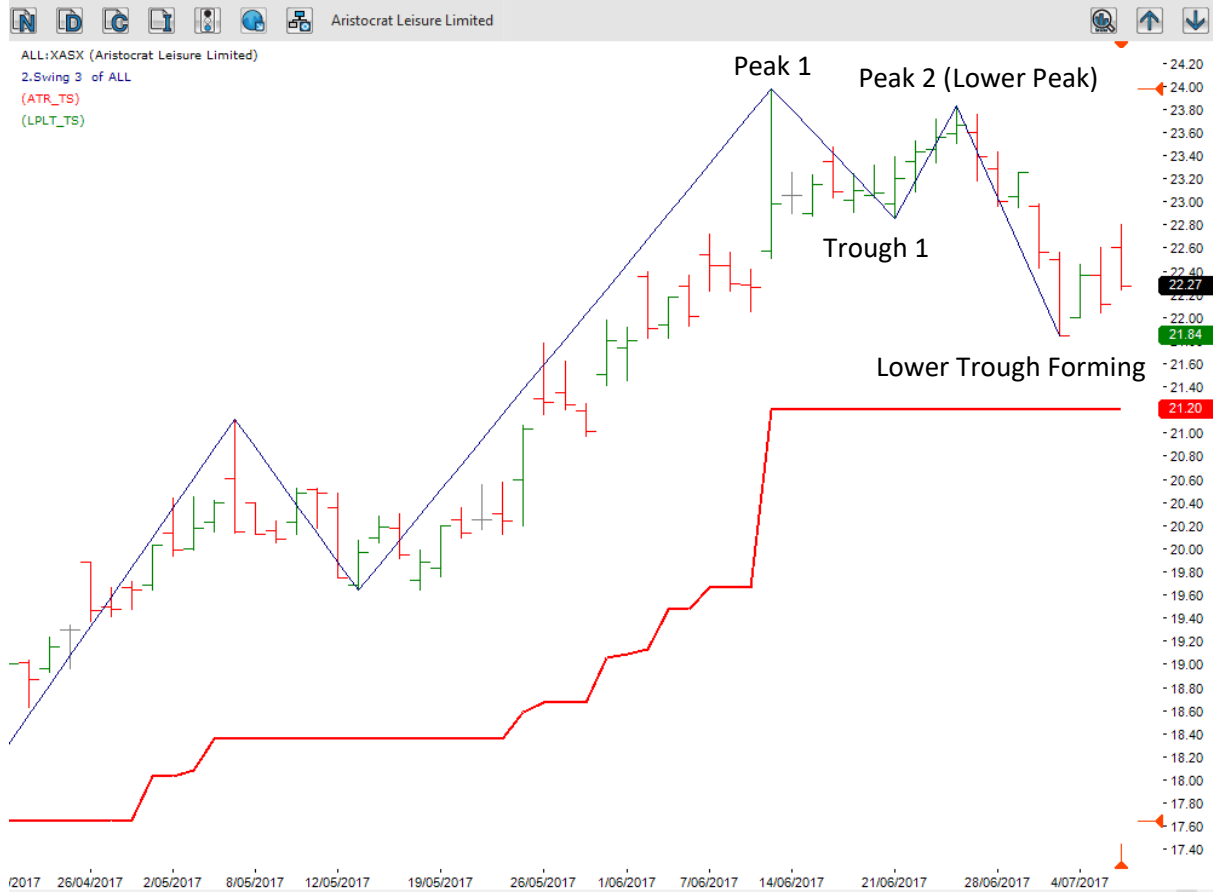


4LT = Lowest of Last 4 Troughs

Trailing stop appears upon 4 Troughs being formed. Trails at the level of the lowest of the 4 most recent Troughs

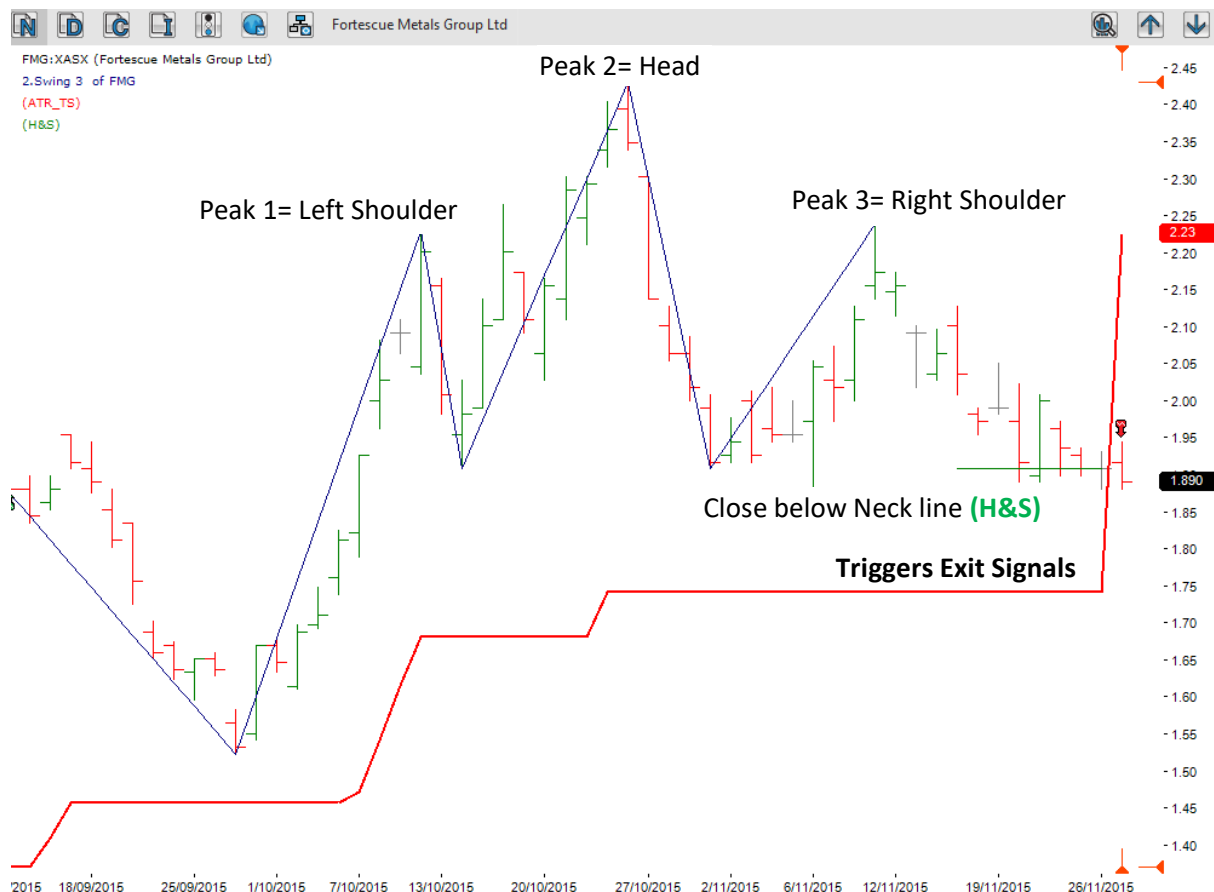
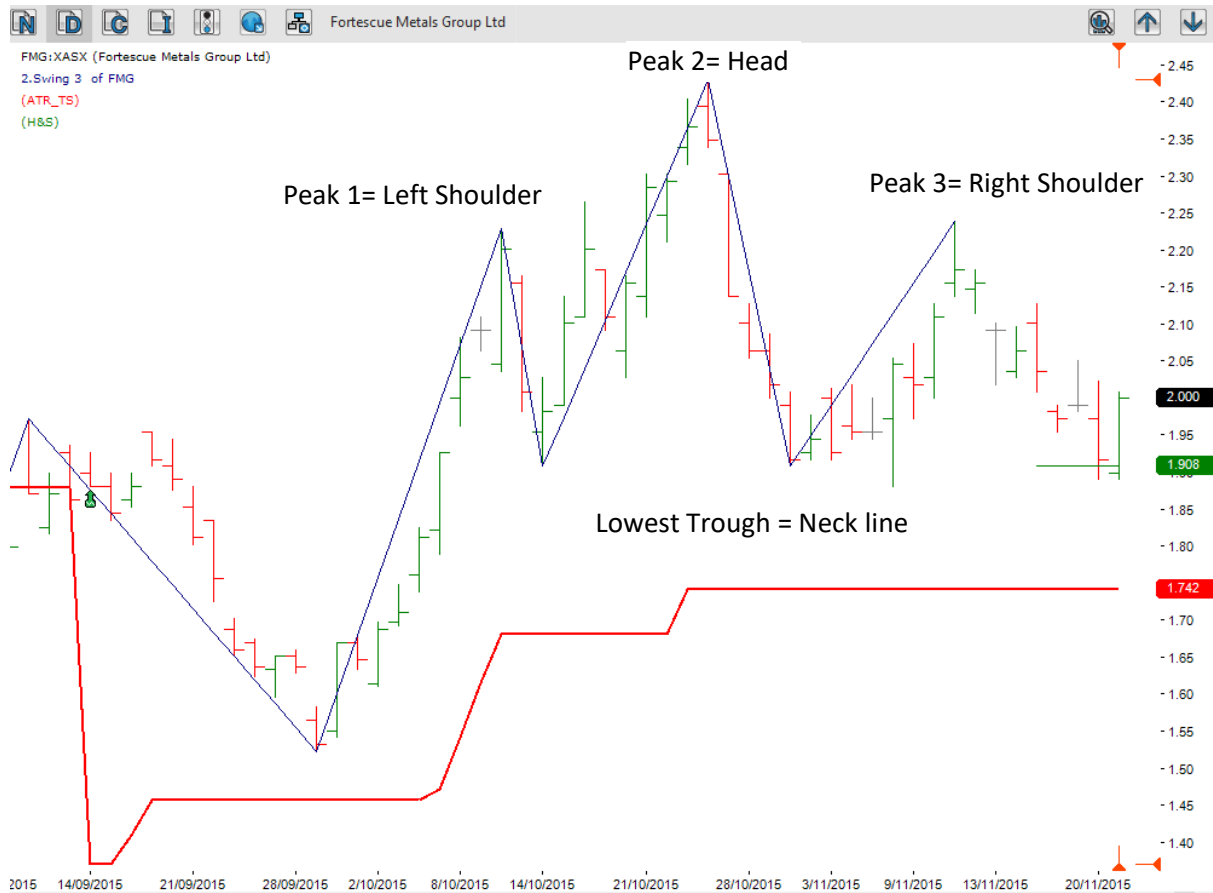


LPLT = Lower Peak Lower Trough



(H&S) = Head and Shoulders.

(H&S) appears once formation is confirmed. Pattern consists of a first Peak (left shoulder) followed by a higher Peak (Head) followed by a lower Peak (right shoulder). The neck line forms at the trough level of each shoulder.



FLP = First Lower Peak

