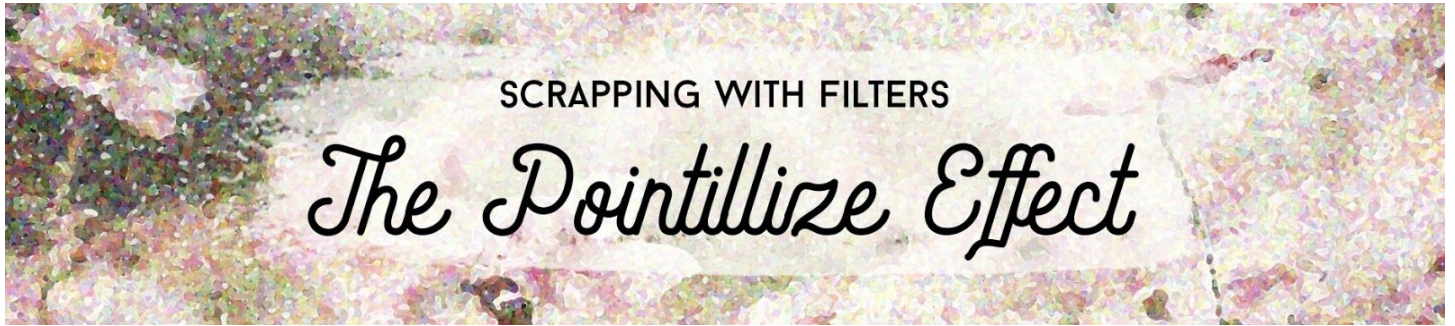


FPE-S2-C2-1-Paper-Challenge-manual



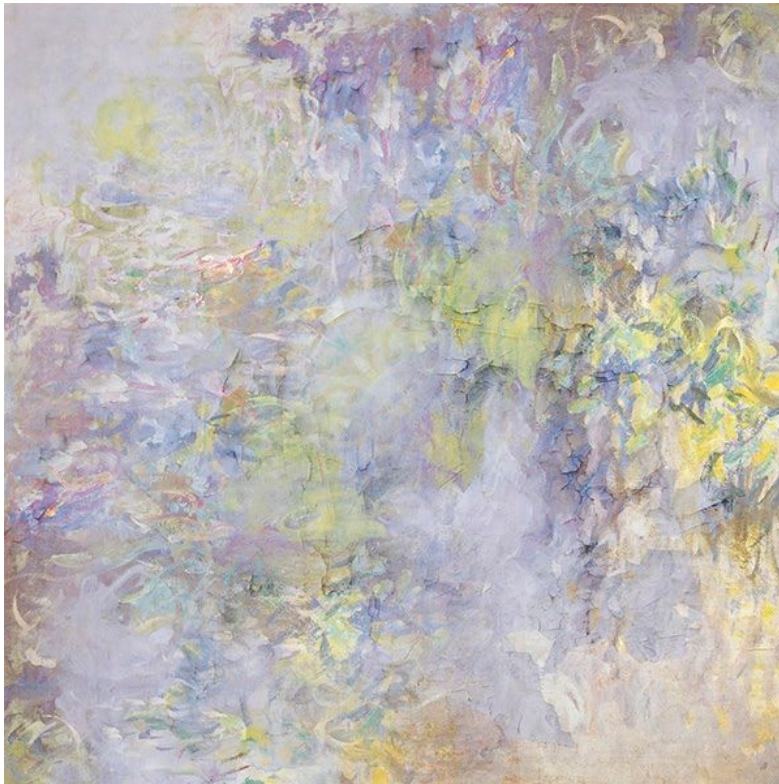
Scrapping with Filters: The Pointillize Effect

Challenge 2: Paper Challenge (Part 1)

Use the paper provided to create a Pointillism effect image for use on a card or scrapbook page.

© Syndee Rogers

[Terms of Use](#)



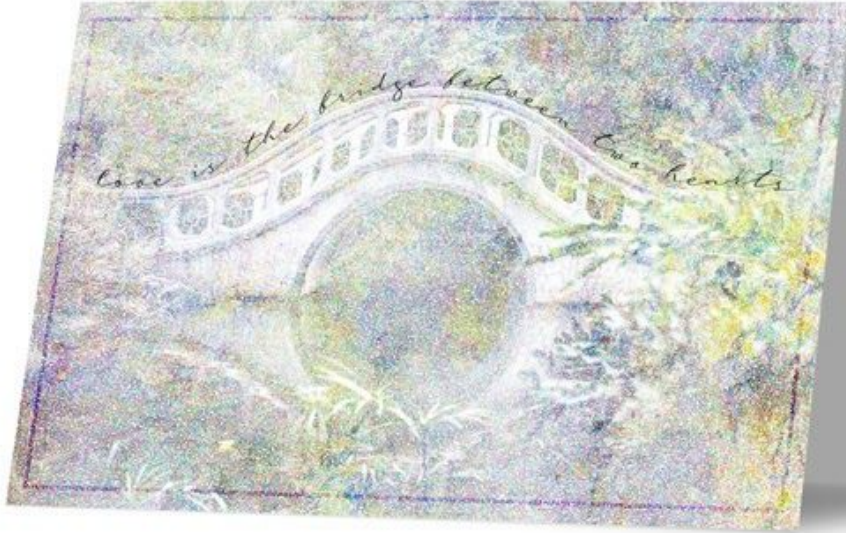
Complete the Challenge

Using the Camille's Garden paper and Bridge photo from the class downloads, follow the instructions for the Pointillize technique to create something similar to this image below.

Note: In this challenge you will only need to apply the Pointillize filter and not the Dry Brush filter since the paper already has a painted look.



- Do not move on to part 2 of this challenge until you've completed part 1.
- Try placing your Pointillize image on a 6x4 inch greeting card or layout and consider using the bridge word art from the class downloads.
- For easy online sharing of greeting cards, check out our [FREE Tent Card Template & Tutorial](#).



Credits:

Card: Syndee Rogers

[Camille's Garden Kit](#): by Syndee Rogers

Word Art: Syndee Rogers

Bridge Photo: Stock [Wai Siew](#)