

KBHB/BHB

Apt Elev **83'**
N44 27.0 W068 21.7

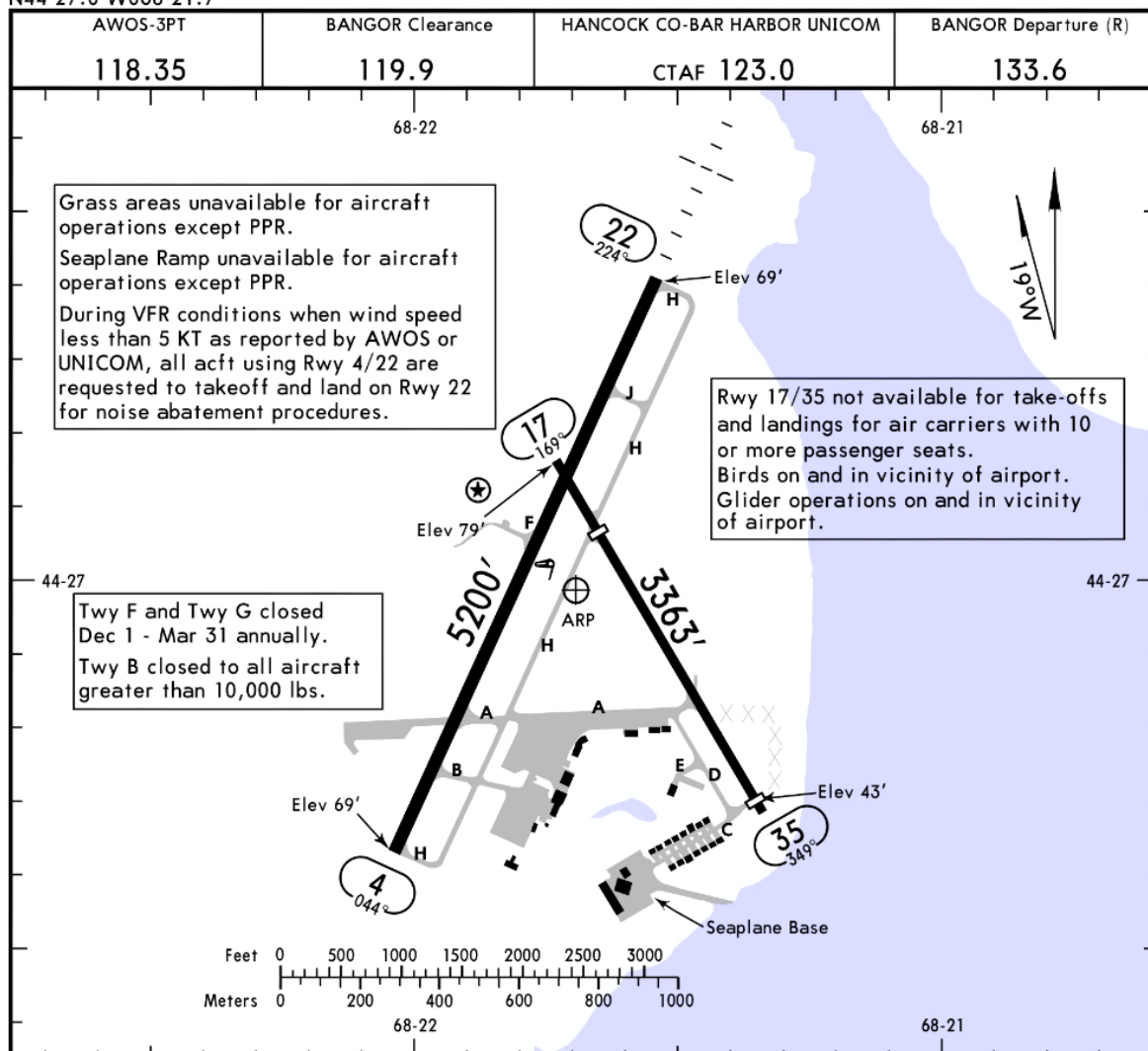
JEPPESEN

28 JUN 19

(10-9)

BAR HARBOR, MAINE

HANCOCK CO-BAR HARBOR



ADDITIONAL RUNWAY INFORMATION

				USABLE LENGTHS			
RWY				LANDING BEYOND		WIDTH	
				Threshold	Glide Slope		TAKE-OFF
4 ① 22	② HIRL	② REIL	② VASI-L				100'
	② HIRL	② MALSF	② VASI-L		4327'		
17 35				2679'			75'
				3252'			

① Due to hump at midpoint, opposite ends of rwy not visible at ground level.

② Activate on 122.7.

Not for Navigational Purposes

TAKE-OFF & OBSTACLE DEPARTURE PROCEDURE			FOR FILING AS ALTERNATE	
All Rwys			Authorized Only When Local Weather Available	
			ILS Rwy 22	LOC Rwy 22 RNAV (GPS) Rwy 4 RNAV (GPS) Rwy 22
1 & 2 Eng	Adequate Vis Ref	STD	A 600-2	800-2
3 & 4 Eng	1/4	1/2	C 700-2	
			D	

OBSTACLE DP: Rwy 17, climbing right turn via heading 220° to 2100' before proceeding on course.
Rwy 22, climb via heading 224° to 1100' before proceeding east or southeast bound.

Rwy 35, climb via heading 349° to 600' before proceeding on course.

CHANGES: Reindex, notes.

© JEPPESEN, 2002, 2019. ALL RIGHTS RESERVED.

AMEND 4 A