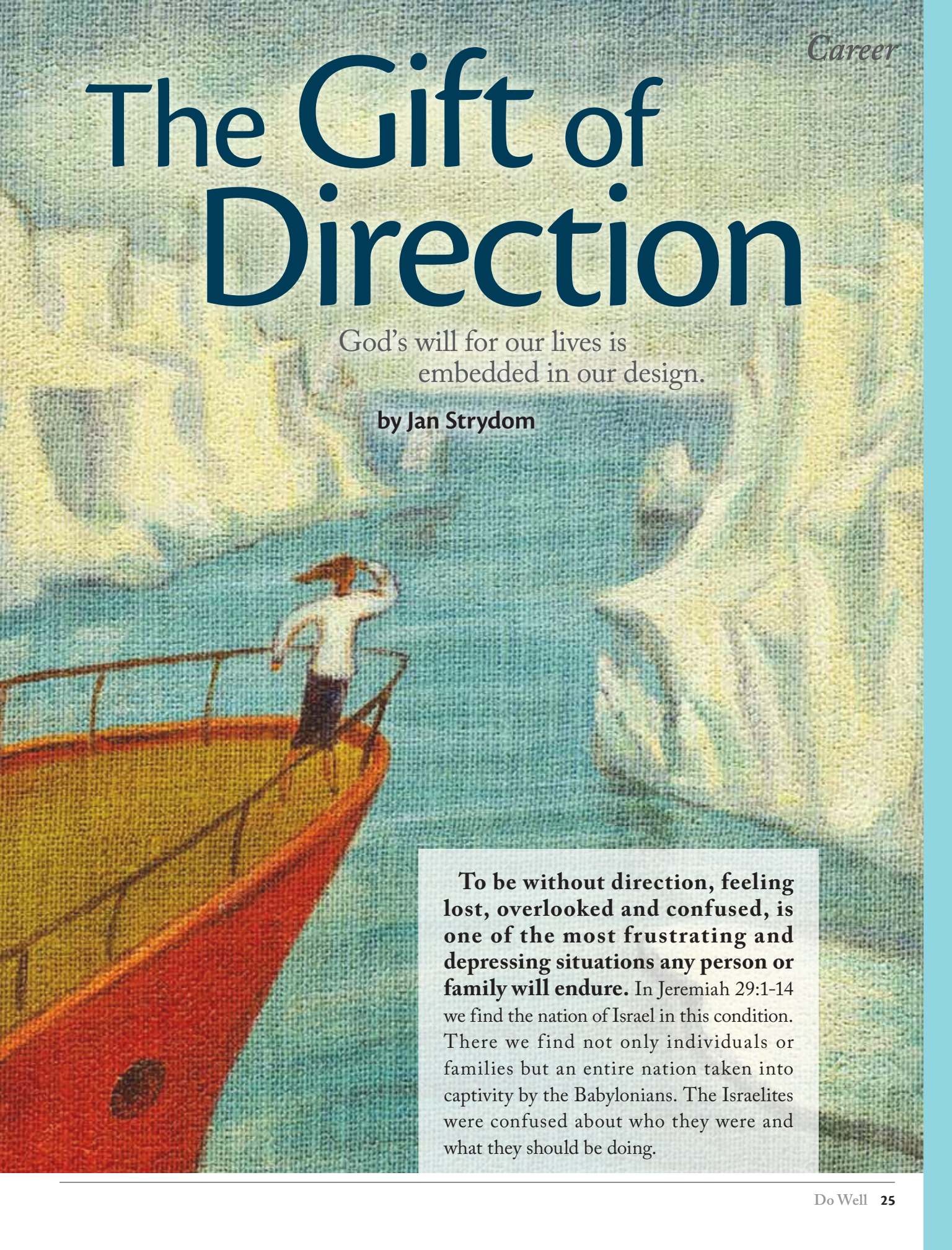


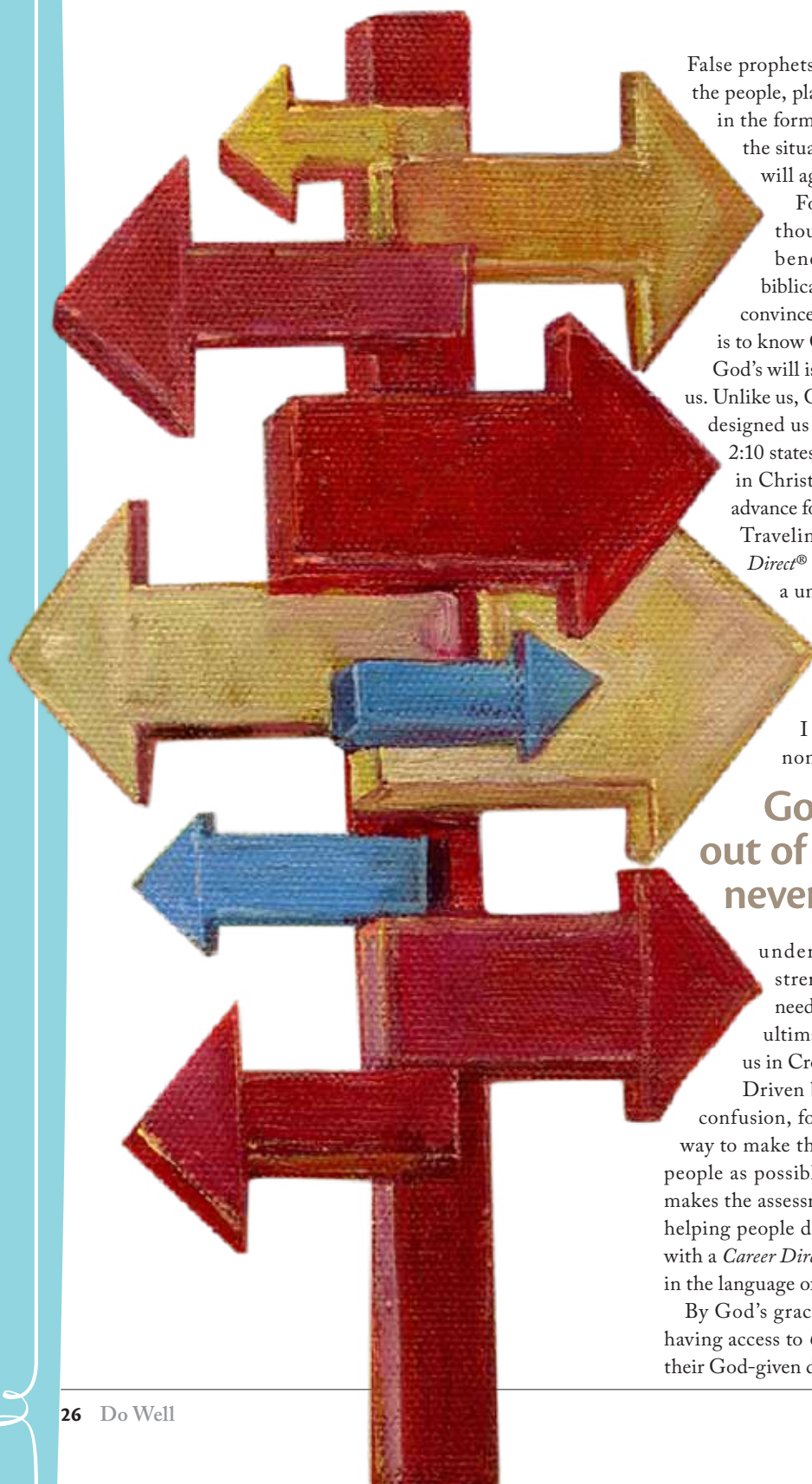
The Gift of Direction

God's will for our lives is
embedded in our design.

by Jan Strydom

A painting of a person on a boat looking out at a large, white, abstract shape in the water. The person is standing on the deck of a red boat, looking out over a blue body of water. In the distance, there is a large, white, abstract shape that resembles a giant's foot or a large, white, abstract object. The background is a mix of blue and white, suggesting a sky or a distant shore.

To be without direction, feeling lost, overlooked and confused, is one of the most frustrating and depressing situations any person or family will endure. In Jeremiah 29:1-14 we find the nation of Israel in this condition. There we find not only individuals or families but an entire nation taken into captivity by the Babylonians. The Israelites were confused about who they were and what they should be doing.



False prophets, who told lies and gave the wrong direction to the people, plagued the Israelites. It took a message from God in the form of a letter from the prophet Jeremiah to correct the situation and get the nation to understand the Lord's will again.

For the past 12 years I have had the joy of seeing thousands of individuals, families and businesses benefit from the God-given direction that the biblically based *Career Direct*® assessment brings. I am convinced that one of the biggest needs in the world today is to know God's will, what I call the gift of direction!

God's will is embedded in our design, in the way God created us. Unlike us, God is neither confused nor clueless about how He designed us and how He wants to use us. In fact, Ephesians 2:10 states clearly that "we are God's workmanship, created in Christ Jesus to do good works, which God prepared in advance for us to do."

Traveling to more than 50 nations and training *Career Direct*® Consultants in more than half of them, I discovered a universal truth: People in all cultures and nations need direction and a clear understanding of who they are and how they were created.

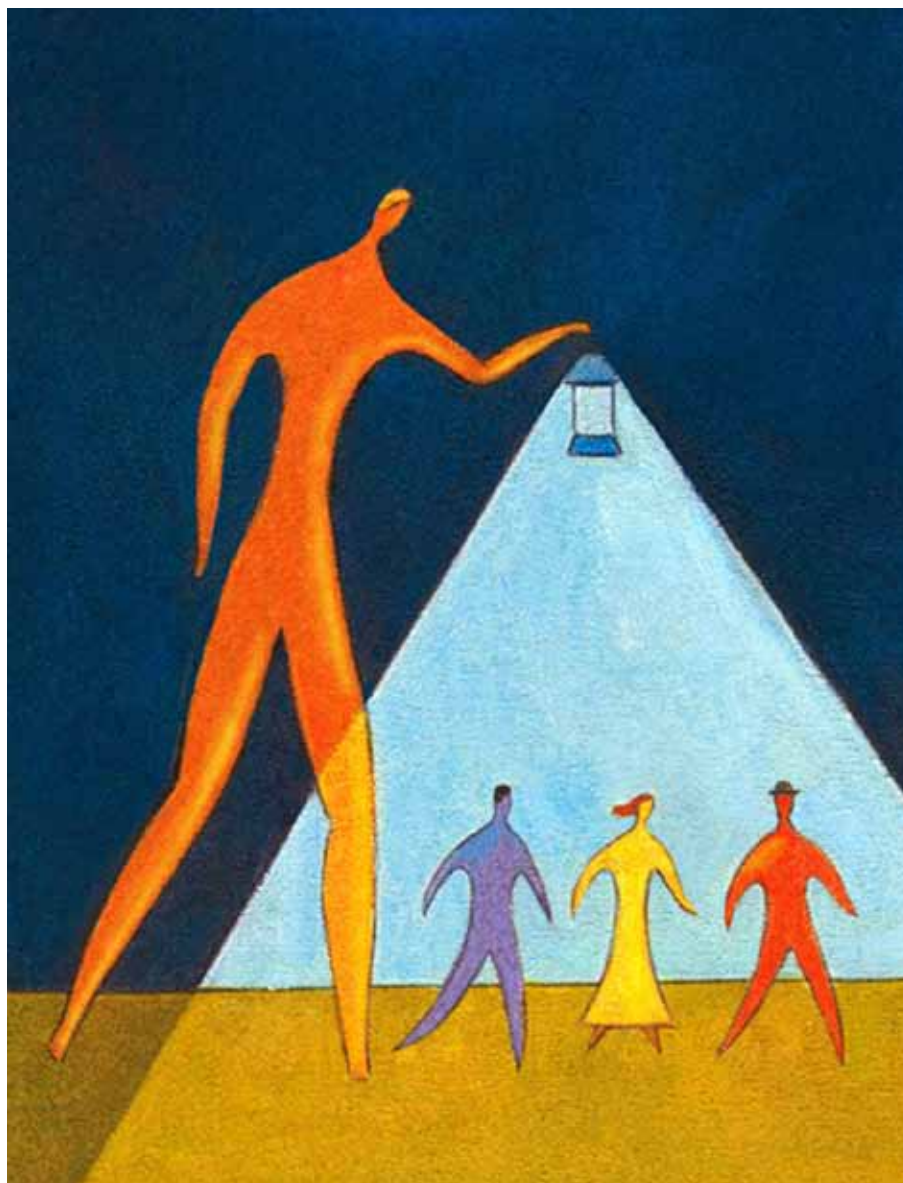
Like the late Larry Burkett, who first conceived the *Career Direct* assessment, I have discovered that both Christians and non-Christians around the globe have a limited

God will always take you out of your comfort zone, but never out of your gift zone.

understanding and knowledge about their own strengths and the uniqueness of their design. The need to help people become good stewards with God's ultimate asset—their own lives—is a central focus for us in Crown.

Driven by a passion to see people set free from lies and confusion, for the past 12 years I have focused on finding a way to make the *Career Direct* assessment available to as many people as possible. Today the *Career Direct*®—Global Edition makes the assessment available in 16 languages. In the process of helping people discover their design, we not only connect them with a *Career Direct*® Consultant, but we can now produce a report in the language of their choice.

By God's grace, my dream to see all the nations of the earth having access to *Career Direct* and people everywhere discovering their God-given design is becoming a reality. Today Crown has the



ability to assist people in China, Russia, Malawi, Indonesia, Korea, Taiwan, the United States and many other nations.

As a result, Crown's dream of helping people to "Do Well" is also expanding significantly throughout the world. We are discovering that *Career Direct*®—Global Edition is the ideal tool to evangelize people in the Middle East and China. Many of our Crown leaders today are actively using *Career Direct*® in their campus and youth ministries. The *Career Direct*® consulting process opens up the ideal opportunity to build relationships on a deep level as the consultants help people with this reliable and scientifically vetted assessment.

Stewardship is not just the wise and prudent management of the external assets that God has given you. True stewardship starts

with the management of yourself and the gifts that God has entrusted to you. *You are God's ultimate asset.* What a tragedy it will be when you discover you have been a good steward with all the "stuff" that God has given you, but you have been a very poor steward of the gifts and talents that God has built into you.

One of the most amazing truths that I have discovered is the fact that our relationship with God is very much based on the way that God has designed us. God will never relate to us in a way that is counter to that special design. The implications of this truth are far reaching. God's expectations from us are always in line with what He has given us. That is why I am convinced that God will never talk to me one day about golf, simply because He has not gifted me with the gift of superior hand-eye coordination. A dear friend used to say, "God will always take you out of your comfort zone, but never out of your gift zone." I believe this to be the absolute truth. God has no delight in using you in ways He has not designed you. We honor God by studying and understanding the way He has created us. By ignoring or abusing ourselves, we are actually dishonoring God's creation.

The biggest gift that Crown can offer the world is the gift of God-given direction, helping people to become excellent stewards of God's ultimate gift. As we remember Larry Burkett,

Crown's late founder, and the way that God had gifted him, we are extremely thankful for his vision of *Career Direct*®. As part of his fruitful legacy, we will keep on working and striving to serve people around the world, encouraging them to become good stewards of their most valuable asset—theirself—and to one day hear the words, "Well done, my good and faithful servant." Thank you, Larry! DW

Jan Strydom is Crown's Global Vice President for Career Direct. Hailing from South Africa, Jan and his wife Alet currently live in the Knoxville, Tenn. area.

