

# FORMATOS QUÉ CRITERIOS LOS DEFINEN

TAMAÑO O  
RESOLUCIÓN

NTSC, PAL Y SECAM

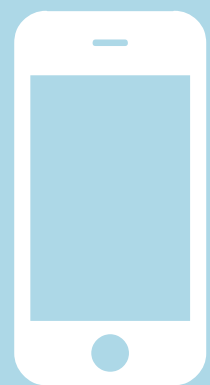
SD, HD, UHDTV

FRAME RATE

RANGOS

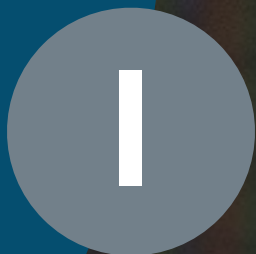
ASPECTO DE PIXEL

Echemos un  
vistazo





# FRAME RATE



# FRAMERATE

Tv – CINE – HFR



## CINE

24 fotogramas por segundo



## UHDTV

Hasta 120 fps



## PAL

25 frames por segundo. 25 fps

## PHANTOM

Hasta 25.000 fps

## NTSC

29,97 / 30 fps



## FEMTO

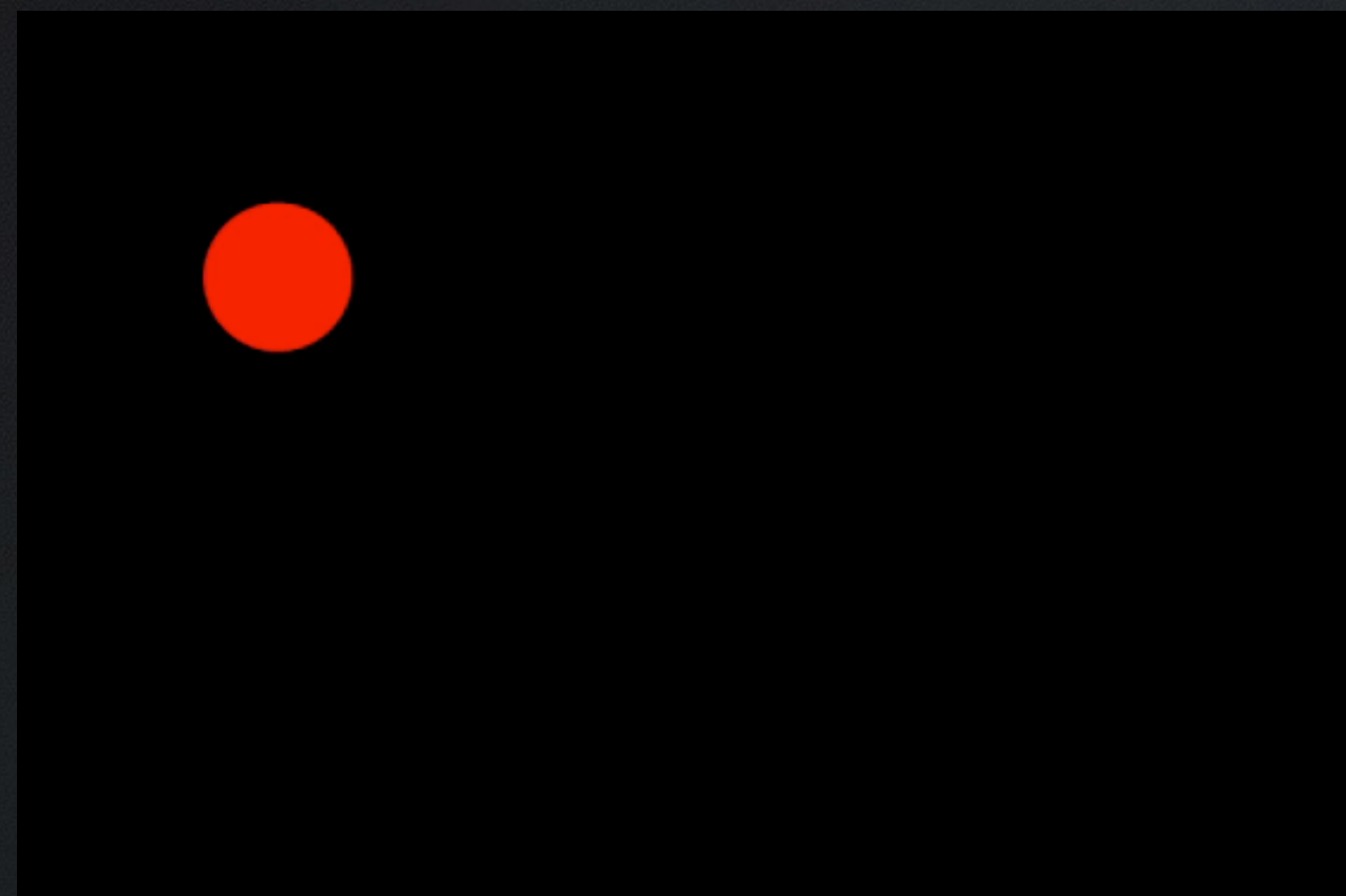
Hasta 2 trillones por segundo.



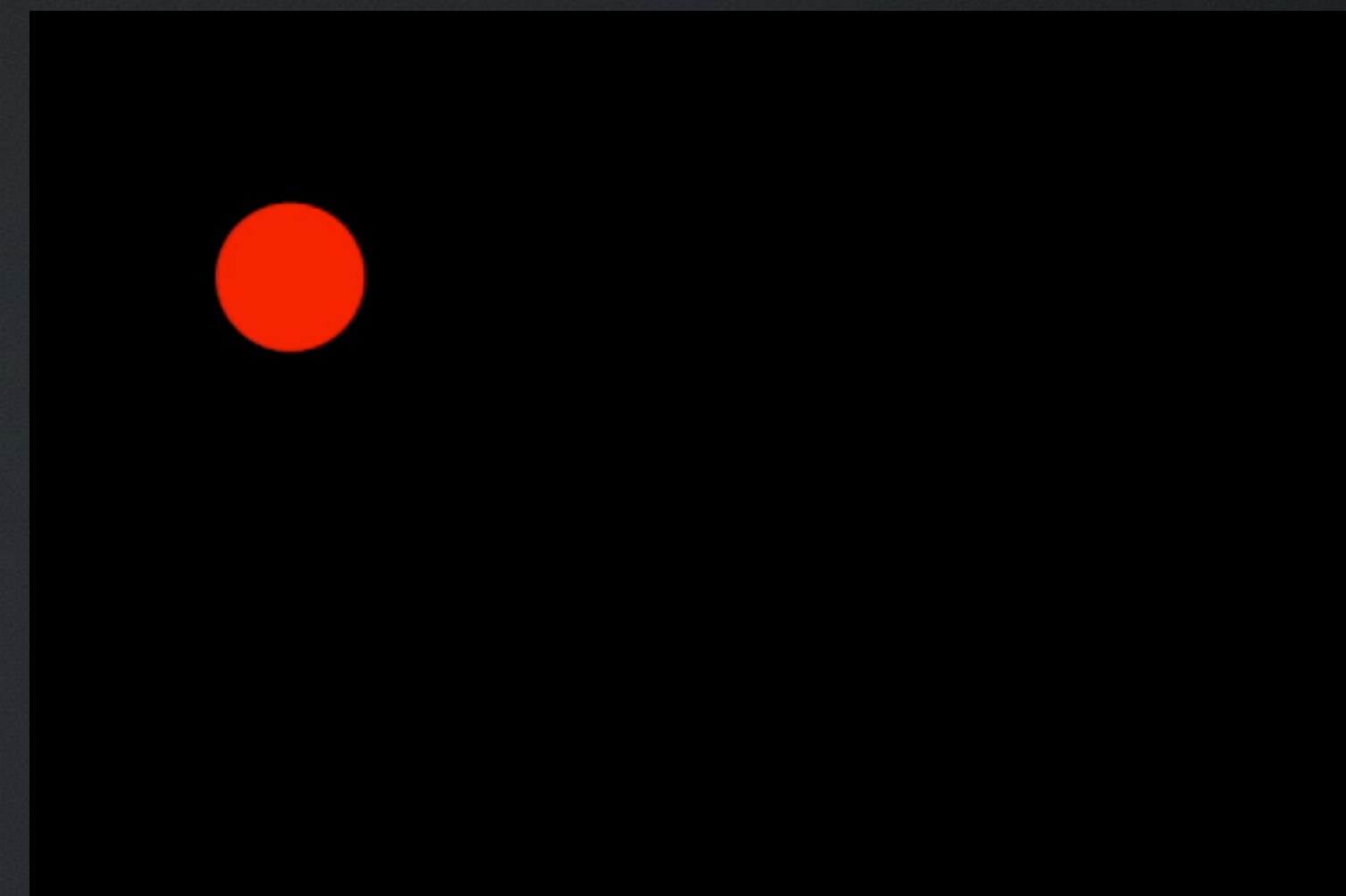
# FRAMERATE

Tv - CINE - HFR

 15 FPS



 60 FPS

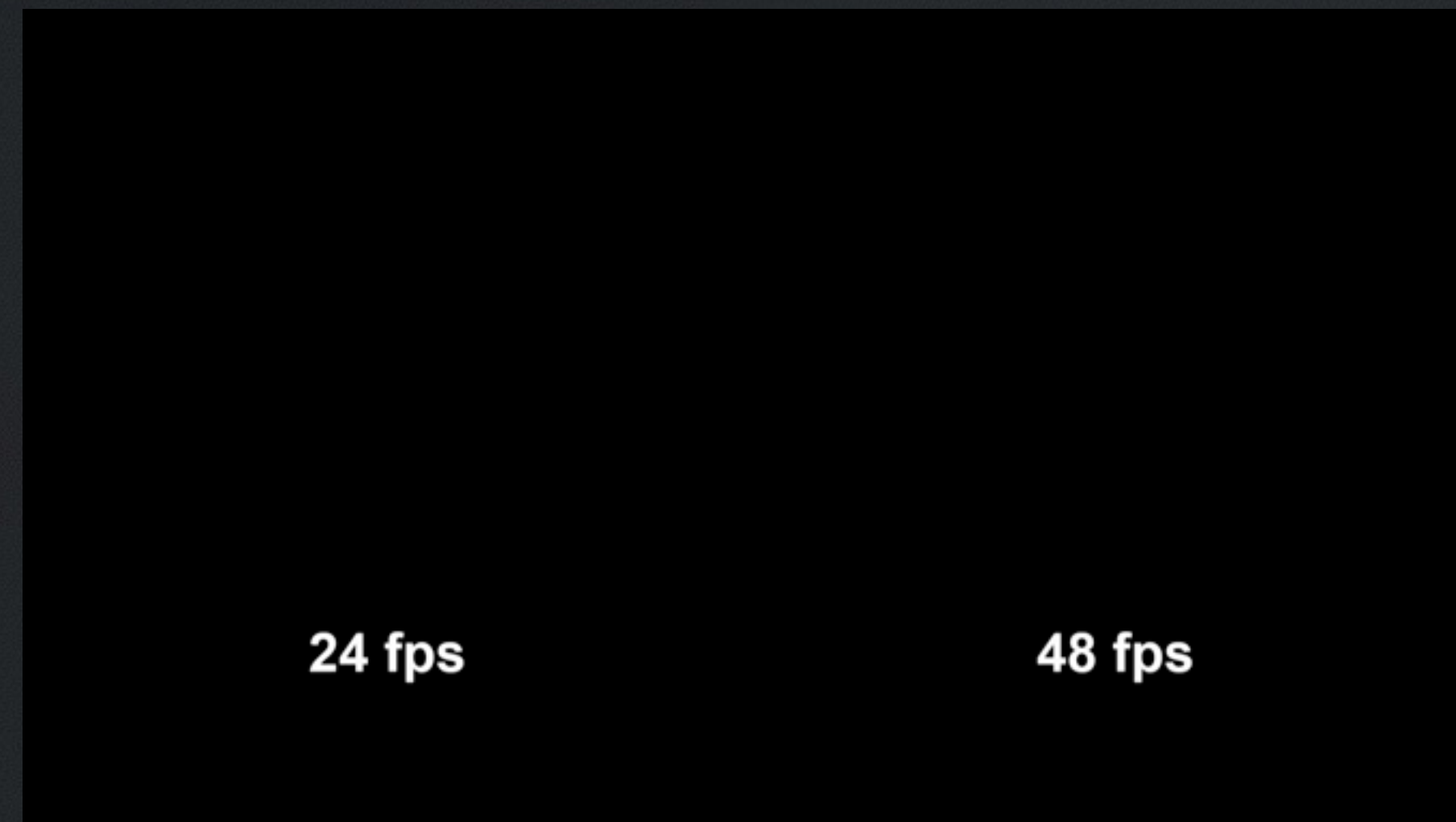


# FRAMERATE

Tv - CINE - HFR



TEASER 24 / 48 FPS



# FRAMERATE

Tv - CINE - HFR



FEMTO



# FRAMERATE

## links

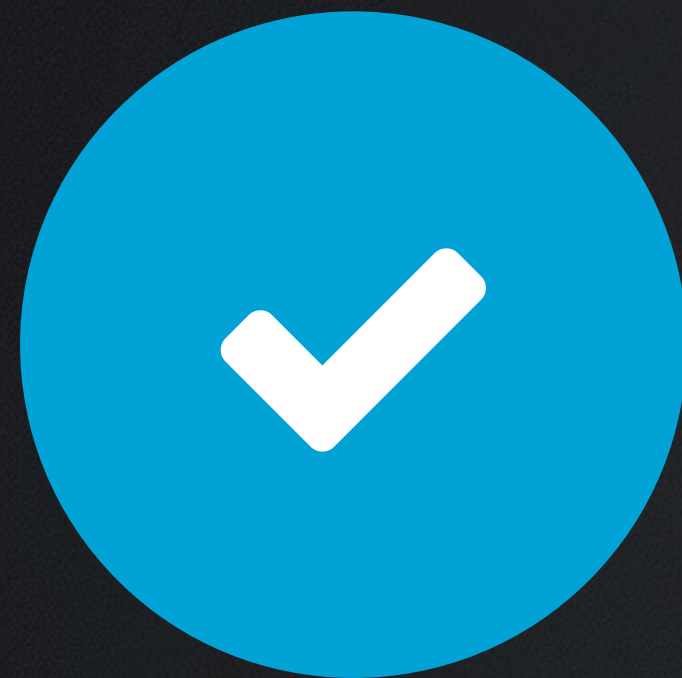


### PHANTOM

[www.visionresearch.com/Products/High-Speed-Cameras/](http://www.visionresearch.com/Products/High-Speed-Cameras/)

### HFR

[www.youtube.com/watch?v=tcQ37OfknJA](http://www.youtube.com/watch?v=tcQ37OfknJA)



### FEMTO

<http://femtocamera.info>



**GRACIAS**

