



Digital Scrapper Quick Tip | Tools, Magic Wand Tool

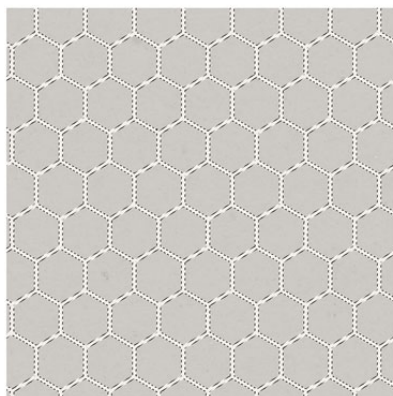
Understanding the Contiguous Setting

by Jenifer Juris

In this quick tip, I'm going to teach you about the Contiguous setting for the Magic Wand tool. It's the difference between selecting all of the same colored pixels or selecting only a section of the same colored pixels.

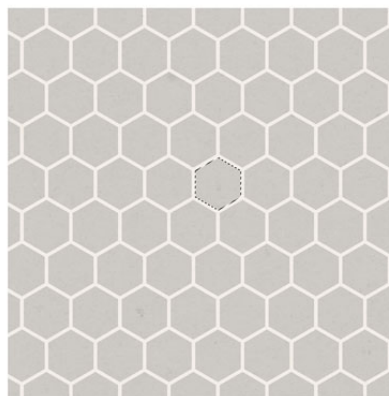
© 2024 Digital Scrapper, [Terms of Use](#), For Adobe Photoshop and Photoshop Elements

CONTIGUOUS UNCHECKED



**SELECTS SAME COLORED
PIXELS ON ENTIRE LAYER**

CONTIGUOUS CHECKED



**ONLY SELECTS SAME COLORED
PIXELS THAT ARE CONNECTED**

Quick Tips for Using the Contiguous Setting of the Magic Wand Tool:

- The Magic Wand tool allows you to make one-click selections of a color or range of colors.
- The Contiguous setting does the following:
 - If the Contiguous setting is unchecked, when you click on a color on the document, all of the same colored pixels of that layer will be selected.
 - If the Contiguous setting is checked, when you click on a color on the document, only the same colored pixels that are touching will be selected.



Page: Jenifer Juris

Photos: Jessica Sontag

Kit: Boy Stuff by Studio Flergs

Fonts: Special Elite, Alesand Round