

THE NEW MILLENNIUM NOTEBOOKS

The TimeLine of Eternity - Part II
Birth & Development of our Galaxy

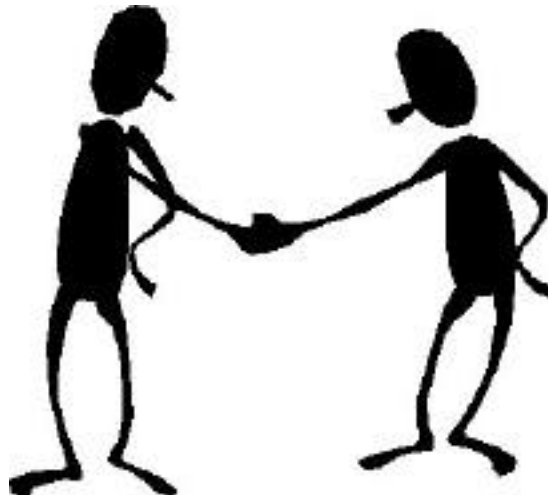


Neil Hickox

Excerpted from
The Chrysalis Teachings
by **Norma Hickox**

Cover Photograph
New Year's Eve
fireworks celebration in Telluride, Colorado
Birth of a new millennium,
the year 2000.
by
Neil Hickox

Humans relate to and are thrilled by fireworks
as a distant memory of creation.



These teachings will clearly show that
Birth (Creation) and Development (Evolution)
go hand in hand.
You cannot have one without the other.

A Profile

I am a professional musician. I play and teach six instruments and compose music. I've been an organist and choir director for many different religious denominations. I have also taught vocal music in private elementary and pre-schools and have had my own dance band in the past. I live with my husband Lyle in Grand Junction, Colorado. We have one son, Neil, a computer scientist living in California. Neil has done many of the drawings used in the teachings.



Norma Hickox

Photo by Neil Hickox

When I began composing in 1981, the music and lyrics would flow out in complete form. A year later, I began to receive information from a spiritual source that flowed the same way as the music. This new material was later explained to be from spiritual teachers whose intent is to bring the Chrysalis Teachings to human understanding. My individual part in the work is to act as a thought provoker; to bring through ideas that stretch our minds and break us out of the shells of old thinking; allowing us to wonder "What If." This work is in the realm of creative ideas, before inventions are made or new products are designed and opens the possibilities of new ways of doing things. For the last twenty years I've been working on the Science of Music. This science will tie everything that has existed since the time of the big bang until now, to a musical vibration for the purpose of finding compatibility between the different kingdoms.

I have been blessed with the privilege or gift of "knowing" many spiritual truths. It seems that some part of my makeup has the ability to "know" and "see" the aspects of creation in a way that relates to musical vibrations. Actually, being a musician, it was the vibrations of music that I've been exposed to since the age of four that enables me to do this.

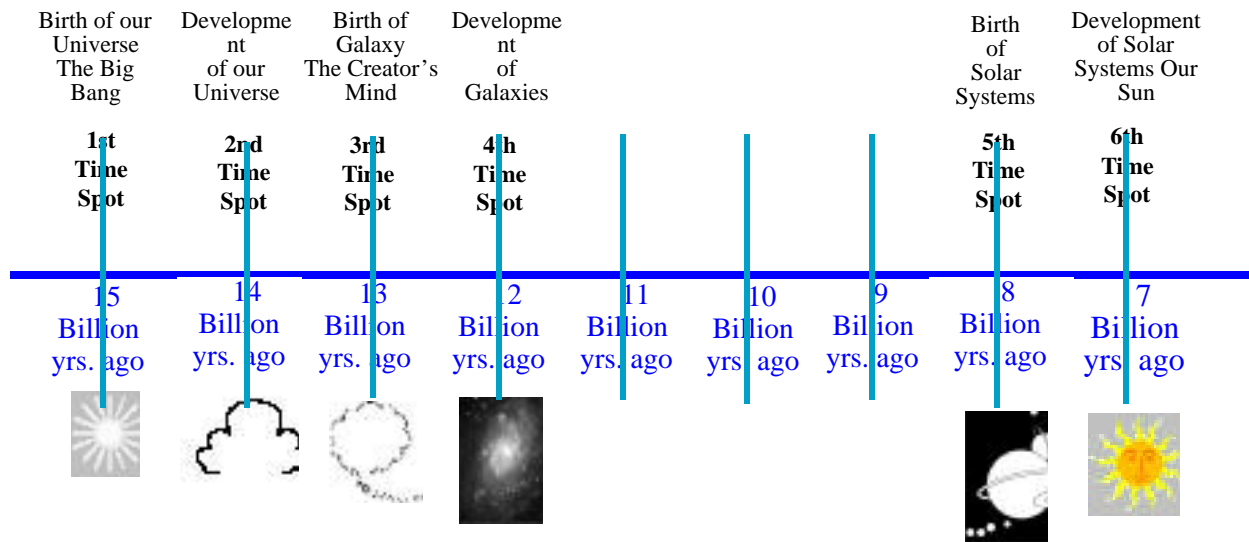
These notebooks enable us to look at any time period of the universe. They allow us to experience events that have happened in the past, events that are happening now, and events that will happen in the future. Each New Millennium NoteBook will take a look at a small portion of the TimeLine of Eternity.

I can be contacted via email: nhickox@bigfoot.com

Table of Contents

Part II - The TimeLine of Eternity - Birth & Development of our Galaxy

Chapter 1 - The Birth of our Galaxy	1
Chapter 2 - The Development of our Galaxy	14



CHAPTER ONE

THE BIRTH OF OUR GALAXY

The First Mind

Our next stop will be to take a look at the events that took place after the big bang had released the subatomic particles into the universe. This will help us understand the mind of the Creator. It was developed, remember, in the original cocoon of vacuum by the beginning



Neil Hickox

At the time of the nuclear explosion this mind was shattered into individual particles that drifted as clouds.

vibrations and was given birth into beingness during the explosion. This mind expanded and set the pattern for all to come afterwards. This mind is the most pure development of anything that could ever be possible. It was unpoisoned and uncluttered. It followed absolute perfection as far as its reaction to scientific circumstances. All that has taken place since then originated in this mind. These particles were once the “complete mind” of the Creator that was present in the black hole beneath the Line of Demarcation. At the time of the nuclear explosion this mind was shattered into individual particles. They drifted as clouds and due to the principle of “like attracts like” they grouped together as far as vibration went and began to form into galaxies, stars, planets and suns. Much of the original mind stayed contained within the black hole beneath the Line of Demarcation and controlled or patterned the particles that were drifting away into the vast cosmos with a pattern for the perfect mind.

The area in the vacuum where the explosion

took place is the Nuclear Isle of Light. When the vacuum was shattered into endlessness, part of the central nucleus of energy, the main Creator, or God if you will, was torn away and settled into a pattern of revolution around this stationary core. Universal drift then took control and creation worked its way ever outward from the tiny droplet. It is all forever expanding outward away from the original Creator God.

When the original explosion occurred, at that time there was a “mind,” the Creator’s Mind. The excitement of the explosion, the sheer awe and wonder of this mind, this first “thinking” being, with a body of energy for a form, was what caused the creation of everything and the tiny little central core that caused it all is still there. This is very difficult for us on the earth plane to grasp.

Hydrogen Atom Compared to a Pearl

An analogy here might be to compare the tiny atom that is still at the center of all creation to the grain of sand that’s still in the center of the pearl as the pearl formed around it.

Thoughts can Travel Anywhere

The same as your thoughts can travel anywhere, the thoughts of this first Mind are constantly revolving, not only around the core but are being solidified into the forming of matter bodies – the planets and stars. Lesser clouds of energy were caught in the current and drifted and still are drifting into endlessness. Some of them clump and cling together and form solid bodies of light and matter. Some just drift. These were lesser “Gods” or “Creators” who paid homage to the “Inner God or Creator” that they knew was their origin. Some have captured more of the light energy than others, but all were once the same body of nothingness that produced the original droplet of condensed atmosphere that started the whole pattern of

everlasting life.

There are, indeed, many lesser “Gods” or “Lords” over these bodies of light and matter, but there is, truly, one central, divine nuclear energy God with a Mind so powerful that none can ever hope to understand it, much less have direct contact with it. There is no comparison to anything on any planet that can give you an idea of the power and glory of this minuscule starting point of everything. Its size comes about because of the concept of compressed time and the expansion of the universe of all who leave this central core and move out away from it, growing and expanding in the freedom of vast endlessness.

The esoteric meaning of a black hole is simply the inner, esoteric part of anything, the part that you can’t see, the thought-form. When we go to the inner planes at the end of a lifetime, esoterically speaking we have gone into a black hole, a mini-black hole. Planets do the same thing; the Creator did the same thing. He is in His inner planes; has never left His inner planes, is perhaps a better way of saying it.

Never having left the inner planes and gone out into the universe that was expanding away from Him because of the explosion, He has no way of learning, or growing or expressing except through what went off of Him at the time of the explosion. There are little fine filaments connected to everything that exploded off of that mini-black hole, the Creator God, the central core of powerful churning energy. These tiny filaments of thread, the Creator’s thoughts, go to every part of the Creator God’s universe; umbilical cords, if you will, still connected to the planets.

The Mind of the Creator is made up of scientific reactions to exoteric events – instinctual behavior reactions that can’t be changed due to the laws of scientific reactions.

Development and Birth of the Creator Compared to Humans

As given, the Creator's development was of scientific reactions. His birth is another story. The same is true of humans. Our development in the womb is a scientific chain of events that can only be altered by the most drastic of events, among which is chemical poisoning. When the Creator was developing there was no such thing as chemicals to poison any part of His development. Therefore, He is the most pure development of anything that could ever be possible.

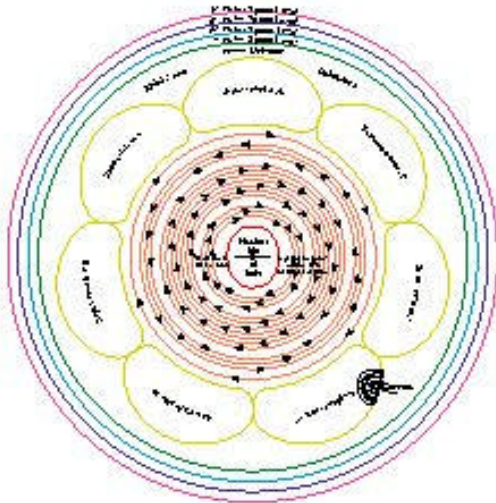
When He was born the Mind came into being as a thinking entity. This Mind was unpoisoned and uncluttered because there was nothing to poison or clutter it. Everything was absolutely pure and clean. Therefore, this Mind followed absolute perfection as far as reaction to scientific circumstances. It is still so.

The human mind, on the other hand, is subject to poison and clutter from the first moments of birth on. This is due to evolution. Creation will always be pure – evolution will always be impure. Even though evolution is a scientific reaction to circumstances also, it is subject to influence. Pure Creation is not subject to influence by others. Remember this at all times.

This Mind of the Creator is capable of feelings, but only of clear, clean, uncluttered, unpoisoned feelings. These are the feelings that high vibrations will bring. The higher and finer the vibration of our bodies, the cleaner and clearer are our feelings. It is as simple as that. When the vibration is low the disharmony results in grating, grinding vibrations that cause pain in the mind. The first Mind had no way of experiencing these low vibrations. They simply weren't there. The original vibration was high and fine and this caused the first Mind to feel joy at being, curiosity about who and where He

was and what exactly He was supposed to do now. Can you imagine being the first one on a world where no one had ever been before? This is the ultimate pioneer, the ultimate exploration experience. This Mind did not know anything other than feeling good and being happy and joyous. This Mind, feeling all of this intellectually, influenced everything that came after this with these feelings of freedom, curiosity, joy, peace, happiness, etc. These feelings are embedded in all the planets, stars, and even the nebulae that are still forming, especially the nebulae because they have never seen anything other than this pure Mind. Therefore, they form into pure, clear, uncluttered unpoisoned bodies until the process of evolution starts. The very process of evolution itself is the cause of the vibration being lowered. This is a scientific happening. The lowering of the vibration causes a cluttering of the mind which in turn causes the lowering of the vibration. All those from evolutionary worlds will always face this battle. There is no way to overcome it as long as evolution continues, except through education as to the cause of it all.

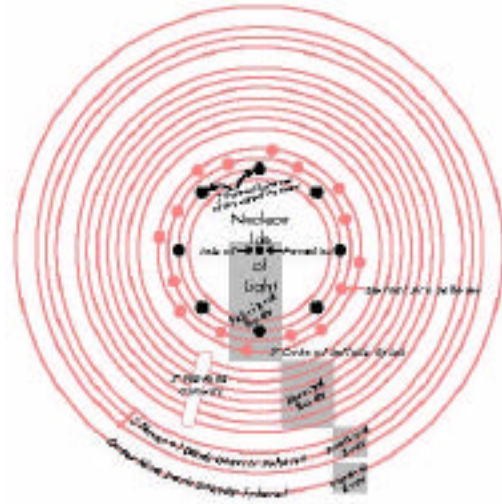
The following drawings of the Grand Universe with all its different worlds is an exact pattern of the growth and development of the human mind, starting with physical evolution, and proceeding through the changes brought in the human mind by the insemination of genes from higher kingdoms. The inner circles are the ultimate goal over many lifetimes, but the outer circles show the exact pattern of study and learning that needs to be gone through for each human to progress in each lifetime. In these drawings lie the perfectness that should be aimed for with the human mind, as it is an exact replica of the Mind of the Creator. As with all spiritual teachings these drawings can be applied not only to the large universe but also to the human being.



MASTER UNIVERSE

Neil Hickox

STARTING WITH AN OVERVIEW, this drawing shows the path of progress for the human mind, as all creation is a repeated pattern. The four outer space levels represent our physical, emotional, mental and spiritual bodies starting with the fourth outer space level as our physical body and working our way into the center – our God Within. At the same time it shows the design of the large universe with the tiny hydrogen atom at the very center.



CENTRAL UNIVERSE

Neil Hickox

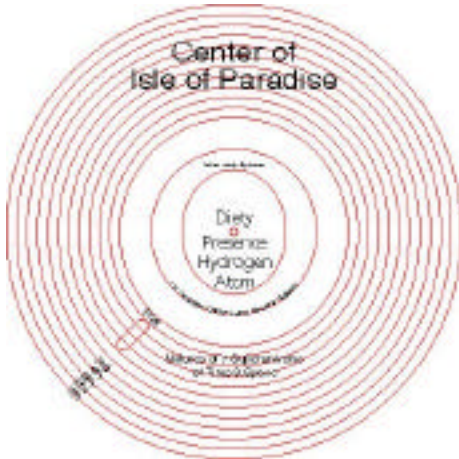
GOING TOWARDS THE CENTER of the Master Universe, we come to the Central Universe. This shows the Isle of Paradise and the pattern of revolution around the stationary core. It is from the patterns in the Central Universe that the progress in the human mind has been designated.



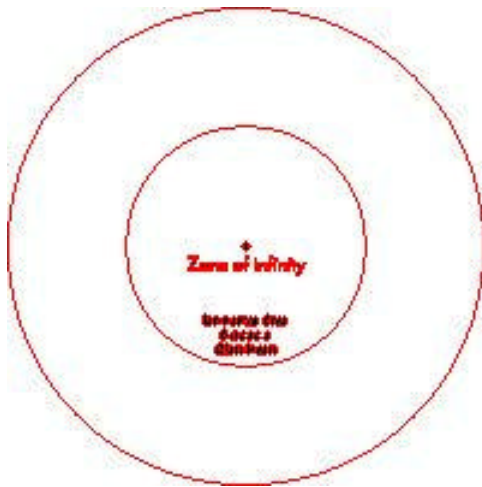
ISLE OF PARADISE

Neil Hickox

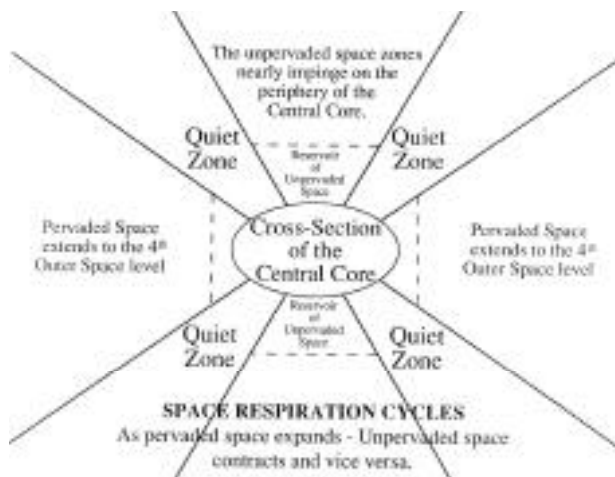
MOVING FURTHER INTO THE CENTER to the Isle of Paradise, in the center of the Nuclear Isle of Light, is the realm of primal origin and final goal of destiny for all spirit personalities. We find that only 10% of total Paradise is in use at the present time.



CENTER OF ISLE OF PARADISE
Neil Hickox



NETHER PARADISE
Neil Hickox



CROSS SECTION OF PARADISE

A CLOSE-UP LOOK at the Center of the Isle of Paradise, (the spot in the center of the drawing) shows the Deity Presence and the Most Holy Spheres. This is where our oversoul will eventually reside in the section reserved for those from His particular Superuniverse.

NETHER PARADISE, showing the Zone of Infinity on the underside of The Isle of Paradise. This underneath side of the Isle of Paradise acts as a giant heart. The process of breathing is part of the function of the central core where it all began. The central core itself is motionless, but above and below is churning energy which is being controlled by this breathing process – a huge pair of bellows, if you will. Remember, energy is above and below, feeding life which evolves horizontally, in other words out to the side. Our universe is not really going straight up or down. It is a flat-parallel moving belt around this central core, as are all universes. There will never be an orbiting of this unpervaded space until all pervaded space has been thoroughly pervaded.

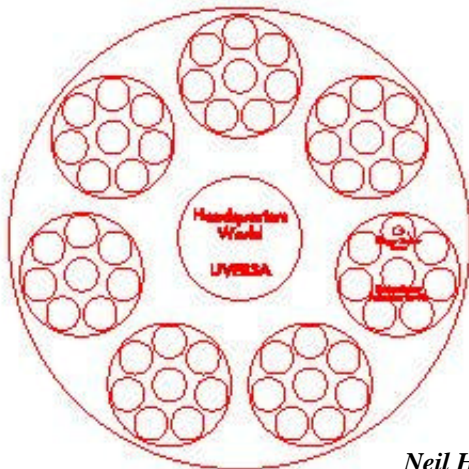
CROSS SECTION OF PARADISE showing the pattern of expansion, the quiet zones, and pervaded and unpervaded space. Horizontal space is pervaded – Vertical space is unpervaded. Unpervaded means it does not have the forces, energies and power of pervaded space. Horizontal space and Vertical space balance each other. Pervaded space is near the mid-point of expansion. It takes 1 billion years to expand and 1 billion years to contract. The quiet zones grow larger the further away from the Central Core they become.



Neil Hickox

Going Out From The Center, the Seventh Superuniverse (shown in the 1st drawing – that of the Master Universe on page 3) is made up of several galaxies which are made up of several inhabited planets of which earth is one. The following drawings will follow the 7th Superuniverse outward from the Master Universe to our planet earth.

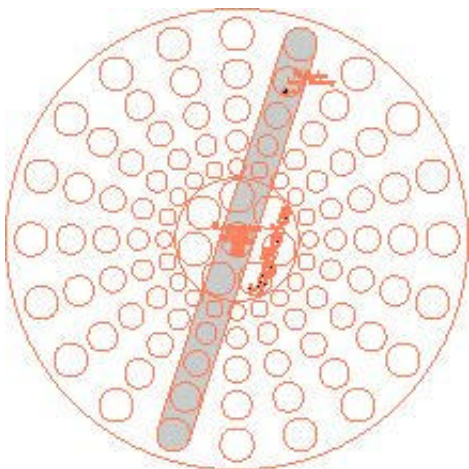
**THE 7TH SUPERUNIVERSE
ORVONTON**



Neil Hickox

Orvonton, our seventh Superuniverse with its headquarters world of Uversa, showing our major sector, the 5th, Splandon and giving the location of our minor sector, Ensa.

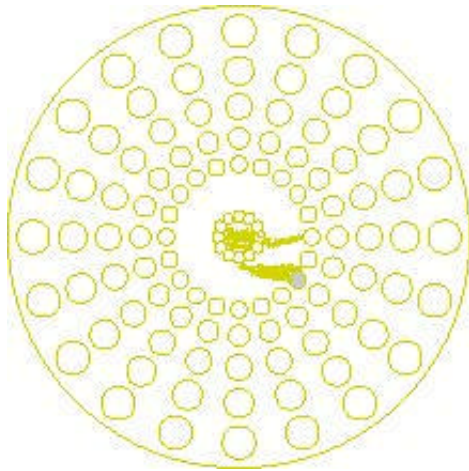
ORVONTON



Neil Hickox

Ensa, our Minor Sector with its headquarters world of U Minor the 3rd, and showing the location of our local galaxy, Nebudon.

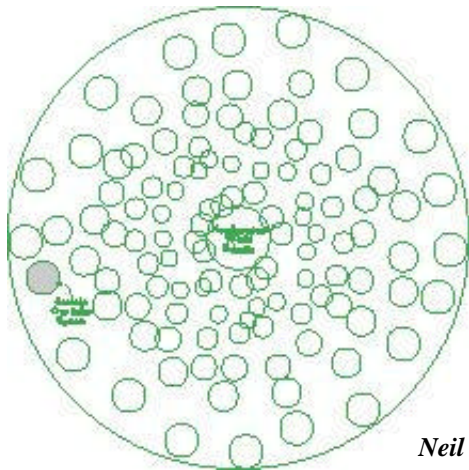
ENSA



Nebudon, our local universe or galaxy with its headquarters world of Salvington, and showing our constellation Norlatiadek.

Neil Hickox

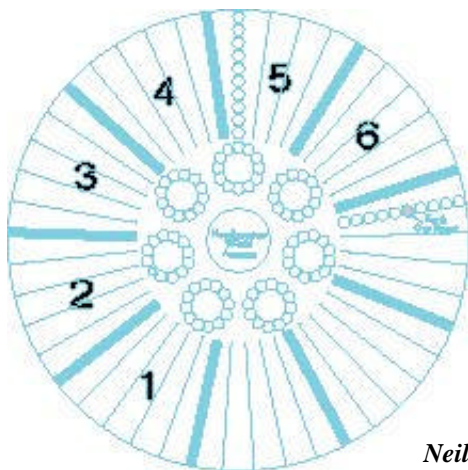
NEBUDON



Norlatiadek, our local constellation with its headquarters world of Edentia, and showing the location of Satania, our solar system.

Neil Hickox

NORLATIADEK



Satania, our solar system with its headquarters world of Jerusem, and showing the location of our planet, Earth.

Neil Hickox

SATANIA



Neil Hickox

EARTH

Earth orbits the sun, the sun orbits Norlatiadek, our local constellation, Norlatiadek orbits Nebadon, our galaxy which orbits our minor sector, Ensa, where Sagittarius is. This minor sector Ensa orbits Splandon, our major sector. Splandon orbits Orvonton, our superuniverse which orbits the Central universe.

Cells of the Human Body Patterned After the Master Universe

The repeated pattern of the universe is evident in the growth, physically and spiritually of the human universe, as each entity is patterned after one in a higher world that is a pattern of the highest.

As spoken of before, the pattern of one cell in the human physical body is an exact pattern of the Master Universe. One cell in the spiritual thinking process will follow the thinking, reasoning, worshipping process of the entities in that Master Universe. Therefore, a total complete study of the pattern of evolvment and growth throughout eternity is the pattern each individual life must follow.

Twelve Stepping-Stones of our Solar System

Earth still receives most help and teaching from

EARTH - Our planet, possibly showing the location of our headquarters world or central world government as Antarctica.

more advanced planets. She is a baby, a mere suckling infant in the overall scheme of even the immediate solar system. The 12 stepping stones of our immediate solar system are suspended animation, impregnation, incubation, and after this one (earth) of education will be hibernation, and appreciation, to be followed by illumination and eventually by the stages of fraternization and experimentation, then by perceptulization adoration and Christulization or crystallization

We will have 12 levels in each of 12 planets to progress through – the oversoul has 12 trips through twelve solar systems – all in the 7th superuniverse of Orvonton. Therefore, a total complete study of the pattern of evolvment and growth throughout eternity is the pattern each individual life must follow.

The Spirit's Progress after He Leaves the Earth Plane

The Christulization process takes place when a spirit is ready. This process is part of the twelfth plane, and is a future stage for humanity. It is the final testing that must be gone through before he leaves the earth plane.

Once the stage of Christulization has been

reached, (and these planets are not yet ready), then the route of progress is to another solar system, still in our local universe (galaxy) of Nebadon. This will continue for a total of twelve solar systems in our local universe (galaxy) of Nebadon.

Trip Through Outer Rings of Uversa

Then the stage of progress moves to the outer realms of the capitol of Orvonton, Uversa. Here the education process narrows to that of understanding the seven spiritual concepts of the Superuniverses, the Masters of which reside on the outermost of the Paradise circuits.

After the trip through these seven outer rings of Uversa, a study of the government of Uversa is thoroughly made and understood. Then comes teaching and reaching back to help – first government on individual planets; then government in Jerusem, the headquarters world of our solar system; then Salvington, the headquarters of our local galaxy Nebadon; then the finishing schools of Uversa are our teaching realms.

These finishing schools, the seven circuits around Uversa, is where we do "student teaching" of all phases of education thus far, that of not only government, but also spiritual understanding as applied to all seven evolutionary Superuniverses. Then and only then are we ready for the pilot world of the outermost Havona circuit and we have certainly earned it!

Trip Inward from Havona Circle

We then start the trip inward from the outermost Havona circle, complete that circle, a timeless existence of polishing knowledge and learning and expressing in separated, synthesized ways on one specific subject before moving to the next, etc., through all seven Havona circuits.

As we traverse each world of each of the seven

Havona circuits we are learning, experiencing and enjoying thoroughly our total existence. There is always "time" to visit other worlds at our leisure that are a designated world on our path. We simply visit them as a "Holiday." The choice of which and when is ours. We set our own rate of progress there, as we also set our own rate of progress now and as we will ever set our own rate of progress.

Each of the seven Havona circuits gets progressively more spiritual and beautiful and we find ourselves less and less wanting to visit the other worlds behind us. Our feeling is one of anticipation of the joys and beauty of the next world and the next. In other words, the further we progress, the faster our progress will become as an automatic reaction to knowledge gained thus far.

When the last Havona circuit, the innermost, is reached we again have a sojourn of reaching back to the beginning circuit and do an extended tour of student teaching which must be finished before there can be any hope of progressing to the outer circuits of Paradise. This is when we know that we are really almost home. We sense it in every atom of our makeup.

Central Universe Pattern for Human Minds

It is from the arrangements in the central universe that the circles of progress in the human mind have been designated. The first stage of the Havona experience is on the pilot world of the seventh or outermost Havona circuit. After we traverse this seventh circuit and understand the identity of our Superuniverse's Master Spirit, we are transferred to the sixth circle.

On the sixth circle we attain a realization of supremacy and are prepared for the Deity adventure. A realization of supremacy simply means knowing that the forces of energy put forth from the Creator will always reign

supreme in His universes. In other words, knowing that we can dilly and dally all we want along the way, but eventually we will evolve to higher attainment in spite of all we do, unintentionally, to hold back our progress.

We are then taken to the fifth circle. Here we attain the Infinite Spirit which means we will take on the Spirit much more heavily than in the past.

Then we go to the fourth circle. After attainment here of the Eternal Son we go to the third. When we recognize the Universal Father which will be the stage of Nirvana as it is called, we go to sojourn on the second circuit of worlds. On the second circuit we become familiar with the Paradise Hosts, getting to know those under whom we will stay in Paradise. Arrival on the first circuit of Havona signifies acceptance into the service of Paradise for us, the candidates of time. This will be status of a teacher and has to do with teaching on inner worlds.

The Three Paradise Circuits

We then have the three Paradise circuits with seven worlds each to traverse through. Between these three circuits we take sojourns on other Spheres in the Central Havona system. The three Paradise circuits are made up of twenty-one enormous spheres and have always been – they are eternal. The outermost of the three Paradise circuits is made of seven immense spheres of the Infinite Spirit. They are all different. These are the executive headquarter worlds of the seven Master Spirits. The next circuit is made up of seven luminary worlds of the Eternal Son. They are all the same. The innermost are seven secret spheres of the Universal Father. They are all different.

We have by this time become acquainted with beings of other origin than animal as ours was. These Paradise spheres hold all the mysteries

and secrets of the universe and we know that we cannot, must not, reveal them to those below us on the upward spiral. Some of the mysteries will not even be divulged to us ever as we have no need of knowing them. They can never apply to us in our eternal existence. We will never totally understand those who do not evolve through the animal evolution stages and they will never totally understand us, but we will all love and respect each other's differences.

These twenty-one satellite stations are the final finishing touches to our lengthy educational process. There have been many signposts along the way where giant steps in progress have been made, many rewards, especially in the drawing in and synthesizing and understanding of the powers and energies that make up our beings.

Arrival On and Graduation From Paradise

From the inner Havona circuit we go to Paradise. During this time we tour the gigantic spheres. We tarry on these inner circuits and then pass inward to the Paradise residence and admission to the Corps of the Finaliters. In other words, we finally arrive on Paradise and reside there with other members of the Corps of Finaliters.

When the Finaliters graduate from Paradise they reside in the outer-space levels. They are the teachers in the primary schools, which we would consider our inner planes (when applying this to our inner journey), only they are working on a level of pre-thought forms. You might say the outer space levels are the incubator stages for oversouls.

Primary Schools (Four Outer Space Levels)

The primary schools exist for the sake of instigating thought-forms in the matter universe. There are, at present, only four outer space lev-

els, but there will be more, as needed, up to seven. This is in the Master Universe.

Here they gather together the blend of virtues and graces and make a pool of energy that the Creator Son (the oversoul) can use as His "body" when He begins His journey. This is very complicated and only serves to confuse unless it can be simplified.

Oversoul Compared to Granary

Let's take an example of a granary where all the different grains with their individual qualities are gathered. One farmer (oversoul) comes to the granary and takes so many sacks of each different grain (atoms) to His own farm (Universe) to have it stored there to be used as He needs and sees fit.

The outer space levels are the original fields of grain. The Superuniverse is the granary and God is the Master Controller of the granary. The oversoul is the farmer and we are one of the pieces of grain.

This is as simple as needs be to explain this part. The Superuniverse, the intermediate school, is where the grain is stored until it is needed. These are the evolutionary worlds. The outer space worlds are not evolutionary, they are manifest eternally.

The Superuniverses – the evolutionary worlds or the intermediate schools – are where the qualities of the different grains are tested and crossed and mixed and worked on until as perfect as they can become in this intermediate school.

They then graduate and progress on to the mansion worlds, as said before, then to the Havona circuit, then to Paradise and then back out into outer space as a Finaliter, a teacher in the original field of grain, trying at all time to produce better crops of basic grain, better stock (atomic

matter) to be sent to the Superuniverse for intermediate schooling.

Other Superuniverses

There is no crossing permanently into the life activities of the other Superuniverses, even though we are brought abreast of their knowledge and ways of thinking and progressing and can, and do, communicate with them. We can never become one of them when we originate on an evolutionary world.

As mentioned before, we will never fully understand those from the other Superuniverses, but will love them regardless for their differences and similarities. Those from strictly spiritual origin can and will be able to blend with and become part of any of the seven Superuniverses.

Four Outer Space Levels Relate to Primary Stages of Awareness

The four outer space circles can also be related directly to the stages of growth a person must go through as the primary stages of awareness. These four stages are the awakening to the knowledge that there is more than organized religion has to offer. The second stage usually leads directly to occult practices. The third stage moves on to psychological search and the fourth stage that of finding the true path as being that of the universal brotherhood, which leads one on to the intermediate schools (the Superuniverses discussed in the previous paragraph) which then helps one learn to better understand their brothers.

Can you see the importance of tracing this progression? As the spiritual center (Isle of Paradise) of our being is attained, we then return to the outer space circle to teach and aid those on the upward spiral. Now none of this is acquired in a single lifetime, of course, for anyone, but as everything is a repeated pattern for

all else, each lifetime should pattern itself after this process as far as spiritual growth is concerned. In other words like a mini-course in the university of life, (our universe.)

After the first trip to the Isle of Paradise most likely we will start again in not only the same universe, but also the same galaxy. After progressing through the solar system we are in now and 12 others, we will proceed inward to the Isle. When we start again we will start in another solar system in our local galaxy and proceed through 12 solar systems and back into the center. This will continue forever. We will eventually return to our original solar system and start all over again. As given previously, we do not cross over into other superuniverses, ever.

Our Education Should Follow Progress of Central Universe

The process of education followed throughout the Divine and Central Universes, shows the variety of education and growth that is needed on the earth plane. A quick scan of that process should be enough to convince anyone that one life on the earth plane simply will not do it.

As each progressive sphere on the Havona circuit is traversed, it is directly related to each incarnation on the earth plane. The study of the seven Havona circles is important because this is a micro plan that should be brought into macro focus and applied to stages of the path for each individual. The whole layout of education and progress of the universe is exactly the same as each individual layout. But it is real and on an ever increasing applicable status as progress is made. However, schooling should always be based on this inward journey and each life on earth needs to see some progress comparable to universal stages of progress.

When the oversoul leaves this solar system for

the next, He will be a much wiser oversoul, but will follow the same pattern of shattering and synthesizing that is followed in our solar system.

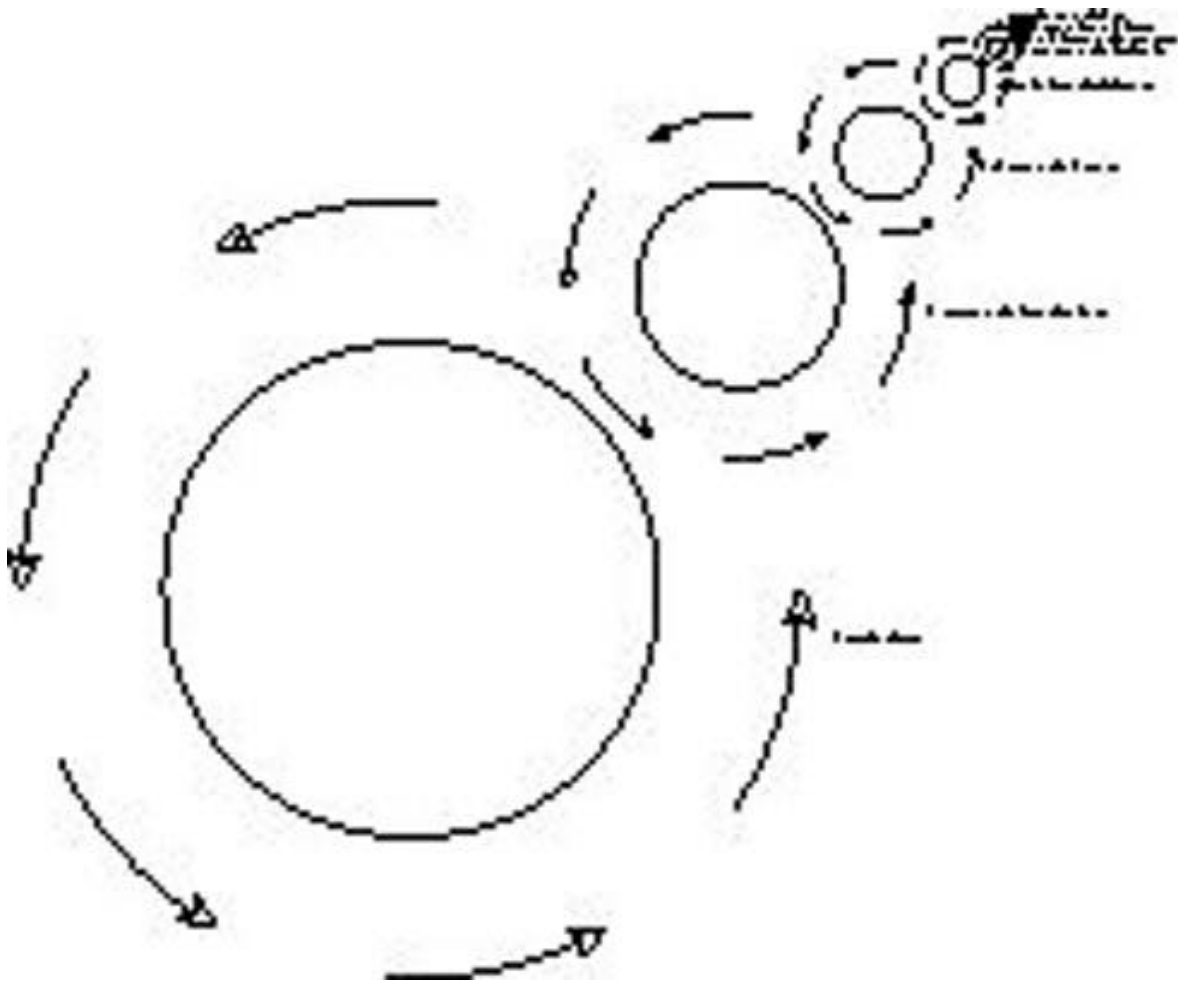
To recap, as He moves through the Havona circuit, He skips none of them, but one will be easier for Him as it will contain the spirit of the Superuniverse He traversed through. He will not enter any of the other six Superuniverses, but will gain the knowledge they gained from their point of view of the overseeing spirit of that Superuniverse by each of the circuits of Havona.

When reaching Paradise, He is sent to the section reserved for those from His particular Superuniverse to reside, but is not kept from associating with others.

Each one forms their own core of Finaliters who then, in turn, help the reincarnation and recirculation of life on planets in their own Superuniverse.

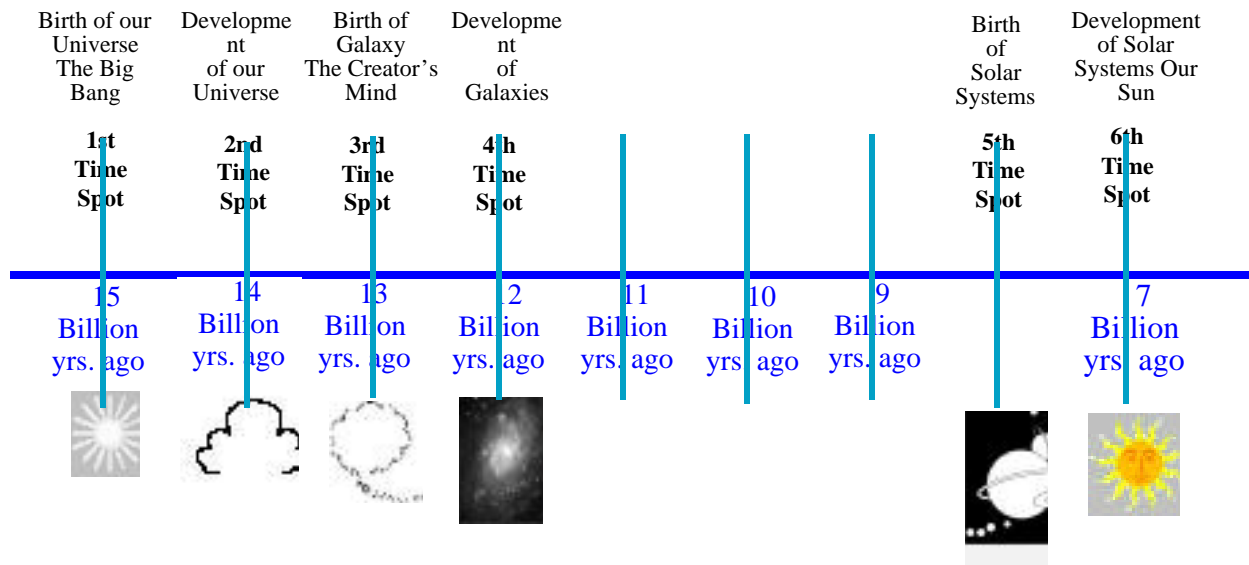
Oversoul then Moves On

The oversoul Himself, then moves on. The oversoul Himself is progressing through all stages of the path in this manner, that of splitting and rejoining. Even when reaching Paradise, He arrives there with the divine sparks whole and then splits them off again to experience the divine glory of Paradise, gathers them up after that to go back out into the outer space levels and releases them again to serve as Finaliters. This is when they remain on their own. The oversoul then is free to produce another group of children as He has raised His last group of children well and trained them to take their place in God's worlds.



Neil Hickox

The drawing above shows how the orbits of the divisions of the superuniverse layer into each other.



CHAPTER TWO

THE DEVELOPMENT OF OUR GALAXY

The Milky Way Galaxy

The next stop on our journey along the TimeLine of Eternity will be at the time of the formation of our Milky Way Galaxy.

From the beginning when the energy started attracting other swirls of energy in outer space, it was master-minded by the first Mind, the Divine Mind.



The plan was laid out for eons to come. The energy of this Mind has always been. It is and was sustained by clouds of subatomic particles whirling in from the far reaches of time and

space or eternity as we call it. These clouds of particles split apart as they neared the central ball of energy, and the intelligent pieces of matter gravitated to the core.

These pieces of matter had programmed into them information as to how the universe would proceed to be formed. It's like instinct in animals. They all knew their part in the eternal plan of a perfect universe for the perfect energy of the Creator to abide in. It was determined by these particles just how long each stage of man's evolution would last and how each spinning top of energy would split and form galaxies. As to who programmed the particles, it certainly was a mastermind, the Creator himself, an all-powerful, wise and forceful core of energy.

The Universe Compared to Whipped Cream Salad

Yes, there is a God, a powerful, all-pervading energy whose presence is everywhere in everything. It is an energy field filled with thoughts

so potent they are dangerous in the wrong hands and used for the wrong purpose. It is all so complicated that one is at a loss as to how to pull it all together for explanation.

To explain God in a very simple manner, please picture a whipped cream fruit salad. God is the mixture in which all else takes place, the ingredient without which there would be nothing. Without the whipped cream as the holding ingredient, all parts of the salad would fall apart. The fruit are individual themselves in the whipped cream; they still retain their taste and characteristics, but without the whipped cream they have little relationship to each other, except for the fact that they are all fruit. God is the agent that bonds all together into a finished product.

At the bottom of the bowl, the energy (whipped cream) is bubbling and churning (picture a blender.) The fruit are right on top of this bubbling and every so often an extremely strong bubble will be right under one piece of fruit, say a cherry or a grape. The bubble will propel this piece of fruit to the surface where it will float in one position (say the stem is up on the cherry) even though it is moving around the bowl, unless a strong bubble pops to the surface beside it. This will cause it to shift its position so the stem points a slightly different direction. It will stay afloat until the time when an extremely strong pull of suction from below will pull it under.

The bubbling at the bottom of the bowl, (spinning blades of the blender), is the center of God, the true center of our universe. We are like the pieces of fruit on the surface of the whipped cream going away from the bubbles. It is all an action of ebb and flow. We are never really away from God, because we are always in the whipped cream mixture.

When picturing the universe as a bowl of



Neil Hickox

This picture of mudpots at Yellowstone National Park can help us visualize the bubbling that's going on.

whipped cream salad the size of a football field, one should picture earth as one tiny cherry. See this football field inflated, as a football itself is and in the center visualize the bubble making machine. It is constantly at work; it never stops its action, so things it affects must always be changing.

If a picture were drawn of the universe thusly, there would be groups of fruit clumped together because one burst of bubbles shot them all to the surface at one time and this determines their floating position as they circulate around the football field. This is an action that is never sensed by one riding on the cherry because the clumps of fruit all stay in their same relationship to each other in their smaller cycles. A new burst of bubbles or even just one bubble can shift one of the pieces of fruit a slight bit and affect the others a slight bit.

In the whipped cream there are whirlpools formed by a spinning fruit, say a large peach, which pulls the smaller fruit into it's whirlpool action and causes the smaller fruit to spin around the peach while they are all revolving

around the football field. The exact nature of this bubble machine can be compared to the hydrogen atom that collapsed into the black hole.

The overall picture is one of the universe in constant motion. When a star sinks into a black hole (sucked under by a bubble in the whipped cream), it does not disintegrate to be no more. It simply waits with the rest of the bubbles to be popped to the surface again in a different time and place. When it does pop to the surface again, it must go through a cooling period. When it has cooled it starts the process of evolution all over again. There is no destruction of the stars, just appearances and disappearances. The football field size universe with earth as a cherry and the sun as a peach, perhaps a grapefruit would be a better size comparison for the sun, are all part of the same solar system. There are many solar systems in our galaxy and there are many, many galaxies, each with many solar systems.

Energy Started Spinning

Perhaps you could picture a whirlpool as a rubber band spiraling downward. When it reaches a stop at the bottom, it will return, pull or spiral back, to the original shape. This is just one top, so to speak, that does this for one galaxy. There are many, many tops spinning, some at the beginning of the spin before the split, some

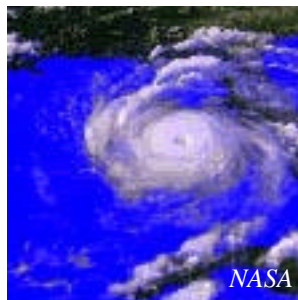
having just split, some almost at rest and others starting the upward spiral. Does this give a better picture of what's going on out there? The process of evolution must be completed by all in one galaxy before the spiral can completely return to its beginning.

In the beginning the energy started spinning like a whirlpool and then, as the center got lower and lower, it split in half. The upper part of the whirlpool of energy stayed up and the bottom stayed down and is now in the process of evolving back up to the higher part to reunite. When the split occurred and energy sparks shot off the whirlpool, they fell after the lower half.

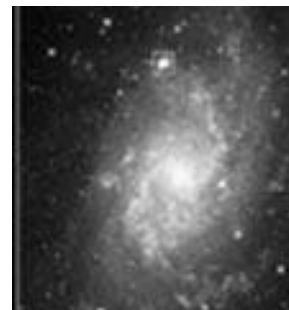
As the split apart took place (picture taffy spinning at a high rate of speed) pieces at the point of the break started breaking off and flying in all directions. This explains that the universe is still moving outward. These pieces have not yet lost their momentum. This is what is meant by the expanding universe. When they finally do lose their speed, they will drift to a stop. That will be the point where the universe stops expanding. This also relates to humans in that the energy that stayed up is the higher self, and what split off and dropped is the lower self. The sparks are the spirit that is evolving, bringing the lower and higher back to reunite. This is creation applied to humanity. The first ones to



Whirlpool at Niagara Falls



Hurricane Andrew



Spiral Galaxy

Spiral galaxies remind one of the whirlpool at Niagara Falls or radar pictures of hurricanes. Whether it is water, clouds or a sea of stars., they all end up in a whirlpool motion if the conditions are right.

make the trip back up necessarily made it easier for the ones following, because the first ones blazed the path.

The point at which each receives the Godhead (the higher energy), where it can be given more help, is at the same spot where the initial break occurred, because this is where the higher energy is still waiting. When reunited with the upper broken end, the rest of the spiral upward will be much faster and easier. Earth is almost there at the point of the break. There will necessarily be a bump or jolt when they reunite and all the dirt and dust of her travel that she collected on the spiral down and on the path of return to that point must be gotten rid of. This occurs as the planet reunites with the broken end of the higher part, the Godhead, the head of the spinning top. This will be the move of the planet into its new orbit. It has to swing inside the Godhead.

The Godhead Compared to an Artesian Well

I would like to give a simple explanation of the Godhead. Can you picture an artesian well, ever flowing sweet, pure water, very deep and refreshing. Picture a bare desert where this well is suddenly and miraculously set down in the middle of it. This desert is eternity, deep, dark, utter emptiness and blackness. (Eternity and time and space are all one.) This barren desert now begins to blossom and bloom with the water from the well. If this water source is removed, all will dry up and disappear again. This is what happens to planets if the Godhead is removed from them. As you know, there can be some growth in even the most barren of deserts. Planet earth is swinging into the Aquarian Age, which is the water sign. The Godhead will release the water from the artesian well, and earth will become a sacred planet.

This dry desert that we're discussing can be

likened to humanity without the truth about its origins. As stated, a little growth can take place under these conditions, but very little progress will be made. Once humanity has the truth, spiritual progress will be phenomenal. This cannot take place until earth becomes a sacred planet. This is what is meant by the phrase "the living well-spring of water," or "the stream of living water" that has been talked about throughout the centuries, but is not understood. It is very difficult to understand. It is like a belt of energy that completely fits around the Earth. Not a belt, but like one balloon inside another. It is above the atmosphere of the earth all over the earth's surface, or will be when the earth shifts on its axis. That will swing the smaller balloon (earth) completely inside the larger balloon (Godhead) and earth will then be a sacred planet. It is like the reverse action of a baby being born. The baby has been encased in a bag of water which is broken and the babe expelled. Picture this action in reverse, like running a film backwards and you'll get a better idea.

There are many planets in the universe as a whole. Some are in dry desert stages, not having their turn yet to receive help and guidance from the Godhead. Some have had their turn and are already sacred planets. Earth is unique in that she is the only one at this particular stage of evolution at this time and therefore is a matter of great interest to all the close inhabited planets and to a few very distant ones.

The evolution of other stars has progressed so far beyond us that they are pure energy now. This energy is part of the Godhead that will encase the planet – energy of living thoughts and ideas. It will be available to tap into for guidance in the coming new times. That is why we will enter an age of peace and prosperity – because of this guidance. It is getting closer all the time.

Spirit Mind Caught in Swirling Energy

The principle of “like attracts like” had come into play and the galaxies, stars, suns and planets were being formed. At the same time, the part of the spirit mind that was caught and swirling around in this process was given birth as the mind of our oversoul. This was when Michael, our Creator God was born. He watched as our galaxy, the Milky Way, as we call it, came into being. He, as the oversoul of our galaxy, will use it to gain His own spiritual growth.

All the solar systems are afloat in their own “galaxy” or “sea of energy” that surrounds each individual stream off of the explosion that took place with original creation. Each ray or streamer makes up its own solar system, therefore, each solar system had a birth similar to the original. This birth for our galaxy, the Milky Way Galaxy, was the Great Central Sun or Christ Michael. This was His beginning.

Actually, our galaxy came into being as an accident because of the implosion of matter that had created itself through an eternity of energy, positive and negative attracted together. Each universe eventually implodes into this tiny black hole and explodes back up again, completely rejuvenated; the same process as with planets, the same process with humans, until perfection is reached. Then the universes no longer implode; they expand and move outward and continue becoming more glorious and truly divine, as do planets and as do humans.

A nuclear explosion being a “chain” reaction means that the same process of buildup and explosion happened repeatedly in many different directions – like the rays coming off the sun.

We are still in the chain reaction from the original explosion. It is still going on. Picture it as

being in slow motion. The changing and forming of new planets and suns and stars is the continuation of the original nuclear explosion. But the continuation of the chain reaction will be stopped if the second stage of the nuclear explosion takes place on the earth plane. In other words, what our scientists do will affect our whole solar system.

Our atomic bomb was not quite accurate in the splitting of the atom. Therefore, the second stage of the explosion was not reached. This is what saved our planet from annihilation and also allowed the continuation of the rest of the galaxy.

The reuniting of the two droplets, as described in the first TimeSpot book, is the clue. Our scientists left them split, which was the first part, the implosion. If the two droplets had joined when the energy rushed back in this would have brought about the second stage. Had our scientists achieved this second stage, it would have stopped the chain reaction of the galaxy and suspended all growth. All matter bodies would have stopped developing at the point where they are now. Our planet would have been destroyed and all else put into suspended animation in a frozen stream of time. This would have harmed the Creator, the central core of energy, because our galaxy is a streamer off from Him, remember. The way to make this second stage happen will not be divulged to anyone ever.

At the time of the original explosion there went forth twelve rays or “chains” of energy that all went through the same process of buildup and explosion before settling into their place in the seventh universe. This time the twelve streamers all had twelve differentiations



of frequency. These twelve streamers are the galaxies, remember, and each galaxy gave birth to twelve solar systems. Our solar system is based on a pattern of twelve different “states of being” as far as frequencies. Each of these twelve different frequencies relate to a tone of the musical chromatic scale. The universe is alive with musical vibration at all levels in all space continuums.

In our universe there are time tubes that run through the universe which, when found, would make space travel much easier and faster. The vibratory rate within these time tubes is totally different than the vibratory rate outside the tubes. Inside the tubes the rate is tightened up. This is not the same as speeded up. There is a big difference. To speed up the vibratory rate makes a shimmer effect. To tighten the vibratory rate means to pull it together and make it sharper. Speeding up diffuses it, tightening it sharpens it. It is the same identical vibratory rate that is outside the tubes but is tightened, which reduces the distance. This is quite difficult to describe to those who have no concept of the makeup of this vibratory rate.

Time Tubes Compared to Rice

The closest thing that can be given as an analogy would be to picture a field of cooked rice as the outside of the tube and a field of uncooked rice as inside the tube. The field of cooked rice spreads out over a much more vast area with the same amount of rice that would make up the inside of the tube. Since the original measurement of the rice was identical you would be using the same amount of vibratory rate in both areas only you could travel through it much faster as uncooked rice.

These tubes are areas or tunnels or sacs in which the vibratory rate has not been able to spread out in the vastness of space. They are original tunnels of the original vibratory rate at

the moment of the big bang, the original nuclear explosion. Therefore, they are pure and clean and are welded together in a frozen stream of time. These tunnels can never be gotten rid of. They are as though you took a hard surface and glued the uncooked rice to it. Picture a field with a path of uncooked rice through the middle of it. Say it took a pickup truck load of uncooked rice glued in a single layer to make a path across this field a couple of feet wide. The same pickup truck load of rice, the same amount, is cooked and piled beside the path (that has high walls so it cannot have any uncooked rice spread into it). The cooked rice begins to spread out on both sides of the path and eventually covers an area a hundred times larger than the path through the middle.

If you were traveling and your travel was based on grains of rice instead of miles, you can easily see how much quicker you would get to your destination by taking the path through the middle. Each grain of rice, each mile of space, expands to approximately one hundred times the original.

Force Field of Galaxy Contains Mind

The coming together of two giant star nebulae was the mating of a sun higher than our Central Sun, as we term it, and resulted in the “mind” of Christ Michael and also His physical body, the Central Sun. The mind of Christ Michael is the force field of the Milky Way galaxy spoken of as the oversoul.

The result of this mating is the original feeling of love between the male and female aspects of Christ Michael that are circling the galaxy. But the part that held the original feeling of love has separated from the main force field and is a circling cloud of gas. It circles faster than the large galaxy it separated from and also faster than the physical body of the sun. Every five hundred

years it approaches close to earth and the ripples pulse every four years. This gaseous cloud does have a name that is known to our scientists. Its universal name is Libely, its earth name is Libra.

The same as we could send out over the ethers a thought of love in a circle, so also does the Great Central Sun, Christ Michael. It is a very special aspect of Him. His thoughts of all kinds are in the great Milky Way force field, but this much smaller gaseous cloud (Libra) has the original feeling that took place at the moment of ecstasy at the mating between male and female. It is embedded in all on earth, all kingdoms, as the kundalini, the root chakra. If one is open to it they will be quite sensitive to this feeling the next time Libra cycles near us. How they use or interpret this sensitivity is their decision. They can attach feelings of emotion to it, or absorb it into writings or music, or some other form of creativity, perhaps lecturing. The choice is theirs; it is there for all to use.

As given, it is closer every four years and very, very close every five hundred years, due to certain rhythmic impulses of the universe. All the stars in the zodiac have embedded in them or surrounding them, a certain part of Christ Michael's make-up – His emotional make-up – such as anger, strength, joy, love, etc.

What this cloud actually is, is the crossing of the paths of two giant star nebulae that both have concentrated amounts of the Christ Consciousness thought-forms in them. One is male, one female and when they cross paths or “mate,” so to speak, they give off an emanation of Christ love that fills the solar system. Anyone that is in tune will hear the message, as it is broadcast to all areas of the Milky Way Galaxy.

The path of progress of this force field is chart-

ed and kept track of. It is stronger at regular cycles of five hundred years. At other times what you get is more of a reflection or bouncing or echoing. It is like ripples or waves on a pond that grow stronger with each pass of a boat that is circling the pond. The ripples start dying down until the boat comes back around again when the ripples turn to waves, to again dwindle away until the boat passes again.

Twin Stars Compared to Humans and Cookies

The Great Central Sun, is part of a triplet star. The left hand separation is in a different galaxy. Both the middle, which is our Great Central Sun, and the right hand side, it's twin, are in our galaxy. The right hand side does not have any in orbit around it yet as there are only three solar systems completely formed in our galaxy thus far although there will eventually be twelve. This is not an ordinary triplet; it was one nebula that split and then one half of it split again.

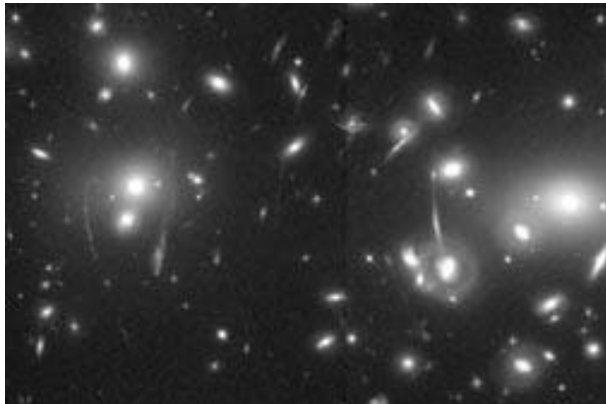
The Great Central Sun is one half of the half that split. For this reason it is not a true member of a set of triplets. It is closer to the half it split from, but at the same time it is closer than any other to the first half that did not split.

For the moment let's disregard this first large original half of the nebulae and discuss the second half that split again. As given, one half of this is the Great Central Sun in our galaxy. Its twin half is also in our galaxy; the large original part that split is in a different galaxy. I will call them sun #1, #2 and #3. #1 and #2 are the original split halves with #1 being in a different galaxy and #2 being the Great Central Sun in our galaxy which then also split. The other half of the split, #3, is also in our galaxy awaiting its time to form its own solar system. For the time being it is inactive as far as attracting any other bodies in space to it.

What makes a binary twin is the splitting of the nuclei at the absolutely correct moment when the star is in the formative stage. The exact same thing must happen with a human fetus to produce an identical twin. The splitting of the cell must happen at exactly the right time for both to survive. There are many instances where a cell may split but it is either too early or too late for an exact carbon copy to be produced.

The same thing holds true in the big universe. The state of the gases in the nebulae must be the exact correct temperature and the speed of revolutions must be absolutely correct for a clone of the star being formed to be produced. When the split occurs, this will be when conditions are right for a “mirror” image to be drawn off the opposite side of the forming star.

The same thing takes place with a human fetus.



Kitt Peak

The formation of cells must be exactly right that all organs will be mature enough to be able to produce a clone. What can happen if the split takes place too late is what we call Siamese twins. The split came perhaps a few hours too late and one organ or perhaps two or even three were past the time when they could clone themselves. All other parts of the fetus were able to produce a clone except, say perhaps, the kidney or the liver and the two fetuses share this one

organ. Sometimes all the organs are able to clone but the timing was so close that the final withdrawing apart does not have time to take place. The only connection between them is tissue between the chest wall or perhaps the wall of the stomach. It is a simple matter, then, to finish this separation. It is not so simple in other cases.

Picture in your mind two cookies that were placed too close together when put on the pan to be baked. Where they touch it is a simple matter to cut them apart. If they are only partially cooked and you could pick them up and pull them apart, there would be an ungainly bump in the outside symmetry of the cookie at the exact spot where they separated.

The same thing will be true of binary stars. There will be an ungainly bump in the otherwise symmetrical outline of these stars. The bump will be on opposite sides as they would be on the opposite sides of the cookies, if you had marked them with north and south polarities.

These non-symmetrical occlusions in the outside of the stars will be the clue to establishing binary twin stars. There will be a way to determine these occlusions. This will be by a concentration of certain prominent gases at this particular spot. Say, for instance, in our cookie example there were dabs of chocolate on top of the cookie that, of course, melt as the cookie bakes. If you were to pull the cookie apart while the chocolate was in this melted state, the chocolate would have a tendency to run to the center of the area between the two cookies as you picked them up and pulled them apart. The chocolate would be stretched, then, at the very outer edge of the break. Therefore, you would have not only a concentration of chocolate at the spot of breakage, but you would also have a stretched area of this chocolate at the very

break. This could be applied to the process of determining which ones are binary stars.

Other factors to look for would be size, which will not be exactly the same. Not even in the case of identical twins on the earth, whose cells split at the absolutely correct time, will their sizes be exact. They will be close, but you could not demand that stars be the exact height and weight and circumference to be classed as identical twins. You would never have any in this classification if this were the requirements.

Therefore, the binary stars will not be the exact same size. This would come closer to being true in a triple star separation or in the case of humans, a set of triplets. There would most always be two of the three that were the exact same size and one that was not. The reasons for this phenomenon are extenuating in both cases and don't need to be gone into at this time.

The makeup of the stars will not be exact either. In the process of cloning a star, outside factors will influence the partial solidification of the star material. In other words, once they are freely apart from each other, drift will move them immediately further apart. They will be drawn to the nearest object of solidity. In the passage of movement they will pick up half formed or still forming bodies of smaller stars and these will be incorporated into their makeup. This is what will cause the difference in internal makeup.

This process of drifting apart is what is responsible for one half of the binary twin to be in one galaxy and the other half in a different galaxy. This drift has force behind it; the force of being pulled apart. Say you are pulling apart two cookies that separated except for a center section. These are tough cookies and you have to pull quite hard to finish separating them. As your hands fly apart when the cookies are free of each other, one hand will go to the right and

the other to the left. Say you have two different plates of cookies sitting on the counter one to each side of you. You would drop the cookie in the right hand on that plate and the cookie in the left hand on that plate. One plate of cookies is sent to a neighbor next door for a holiday treat. The other plate is boxed up and sent across the ocean to where, perhaps, your son is in the military service in a foreign country. You must see the same thing happening to the binary stars in order to understand why one can be in a galaxy different from another. Also, one cookie could be analyzed in a lab experiment, the recipe determined and more cookies like it produced.

The other cookie could never be eaten, but also never be used to produce more of the same or attract more of the same. It would eventually become stale and harden and no longer be useful.

This is what happened to our central sun's binary star. It was never eaten, nor was it analyzed so it could attract other cookies to it. It is a lonely star in another galaxy and is serving no particular purpose at this time. Its makeup internally is very, very similar to our sun, but it has not attracted any planets into orbit around it due to its location in the universe. Its live qualities did not readily attract any star near it. It was moving faster than our sun and that caused it to not be able to cement an attraction.

Our half of the binary star was born in the approximate area it is in at the present moment. In other words, one of the baker's hands was pulling harder than the other. Our half of the cookie stayed pretty much where it was, but the other half moved with much speed through the universe not attracting anything to it.

This other half could hold planets in orbit if it could attract any, but the attraction process must take place at exactly the right time also.

This could be compared to a female of the animal species attracting the male at the right time.

Communication Network Like Telephone System

There is a network of communication among three solar systems and also a separate network between most planets in one solar system. The intricate workings of our telephone communication system may be a good comparison to the communication network of the galaxies. The universe is so large, it is unfathomable. It frightens people to picture it this way, but they really need to be able to see and believe this. It should not make anyone feel useless or unneeded as all are part of energy lines and without them these energy lines are shorted out. This is why each spirit on each planet in each galaxy is vitally important to the overall energy line. They must all light up, so to speak, or that particular line of communication is dead until they do. Eventually they will. Picture each divine spark as a fiber that should glow in a fiber optic light. They are all needed for the beauty of the lamp to be complete. This is what is holding earth back from plugging into this network of communication through its energy line. She must become a sacred planet and be connected with the others by each divine spark taking its rightful place. This is very confusing and difficult to explain to those who have no concept of the overall purpose or plan for the universe as a whole, because it is such an immense picture.

You are a thought-form of energy, spun off that oversoul, who progresses through twelve planes of inner life, which is mimicking the outer life (you), who is mimicking the oversoul, who is mimicking the central core or God. You are the reality you at this given moment, and all others are the reality you on lower and higher levels. You can expand your universe by

adding more mirrors to look into and extending the tunnel or channel. Your soul is a child of the oversoul, who is a child of the central core or God, the same way your probable realities are related to you.

There is no end or beginning of time or space. It is all one huge sphere. Your path is laid out and can be seen for a certain stretch until it goes over the horizon. A certain part of it can be seen by those who are sensitive. A lot that happens to individuals cannot be changed, but some of it can be altered as these are lessons presented as your opportunities to grow and you have the free will to decide if you choose to learn the lessons this time or not. The ones that cannot be altered were set up by your teachers. They were stubbornly telling you that you can't put them off any longer. You are going to learn them this time. You always were and always will be the entity that you are now.

The particles in your brain are your genes, pre-programmed with certain traits as the particles in the universe are pre-programmed as to kingdoms. Genes are a combination of human family traits infiltrated with the incarnating entity's energy. They are mixed. The human traits are there, of course, at conception, but have to be energized by the incarnating entity. This is a combination of traits of the zodiac sign and the personality ray. The influences of energy of the planets at the time of birth is what infiltrates the genes already present in the baby.

Comparing Humans to the Large Universe

One should compare one's self to the universe and the universe to one's self. Your mind must be considered a sphere of solid time and space. The moon, though dead, is still in time and space. So are all the incarnations you have had also dead, but still in time and space. All you have been or will be is programmed into your core or inner seed, as were the particles that

feed the mastermind of the universe. These particles (genes) feed the inner core of you. They are programmed to act and react a certain way. That is why it is said that much coming at you cannot be changed.

You are (like the galaxies) constantly trying to bring your lower self and higher self together into a balanced whole. The living stream of water, the Godhead, is in your mind and when the lower self is raised to meet the higher, you can tap into it for much help and guidance in all areas. This is the universal mind or as explained about the universe, the Godhead.

The pass through the oversoul, the Milky Way Galaxy that our solar system revolves through accounts for periods of great spiritual strides forward that humanity has taken and for masses of people to “open up” to their inner (esoteric) self. This is the start of the fourth pass through the oversoul. As people “open up” to assimilate these more powerful vibrations, they raise their own vibrations to their higher etheric selves and contact the real fourth dimension on the etheric level of the planet. They retain its beauty and color and high vibratory rate as they bring it into existence, then, on the earth plane, the exoteric plane. The unmanifested plane is the esoteric (spiritual). The manifested plane is the exoteric (physical). Both are etheric matter (divine) just a difference in vibratory rate.

Humanity must parallel events in the universe. It can be no other way. Once you have done this, your life can never be the same. It should become much more fulfilled. You must live according to the dictates of your higher self, never your lower, or you will lose this achievement. Listen to what it is telling you. It comprises your universe. If not following it, you feel like a star that has gone wild, out of its natural orbit and most likely headed for disaster. This is very complicated, to compare your

mind to the universe, but as above, so below. As the universe comes to a stop, your mind will have expanded to total capacity, far beyond the ten or fifteen per cent now used. As each star must help other stars evolve, so must you help all those you are associated with as they are part of your universe.

The upheaval that is gone through prior to balancing or joining of the two selves is compared to the upheaval earth will experience when it moves into its new orbit. It must have a new beginning and it must be built in the mind. So must a new beginning be built for an entity who joined the two selves. It also must be built in the mind through transmuting attitudes. This must be stressed. This is why early education is so important. All the minds of children are universes making up one huge universe. These explanations given here are vital to helping others understand that the Kingdom of God is within.

The three bodies, physical, emotional and mental, are, of course, inside you. They are the kingdoms, so to speak, of your universe. The physical body is of course easily understood. The emotional is next easiest, but the mental body is tricky to really understand. The mental body is the mind of your probable realities (other incarnations) plus your present mind and the universal mind. The mental body is not functioning in most humanity, or rather only one third of it is. The person's own mind is all that is working in most. Therefore, the mental body is usually overpowered by both the physical and the emotional bodies. If the physical body says it doesn't feel well or is too tired, the mental body lets the physical get away with it. The same with the emotional body. The emotional body will affect the physical and the mental body is just too weak to do anything about it at all.

You can readily see how the transmuting of bad attitudes is the only way to strengthen the mental body, so it can start having some influence on the other two. This is really what was meant by the trinity, as the mental body is the place where the divine spirit is.

The really intelligent part of humanity can readily understand these concepts, but the majority, especially older individuals, will have a very difficult time with them. This is why education in the future must focus on attitudes.

All Have Twelve Levels of Progress

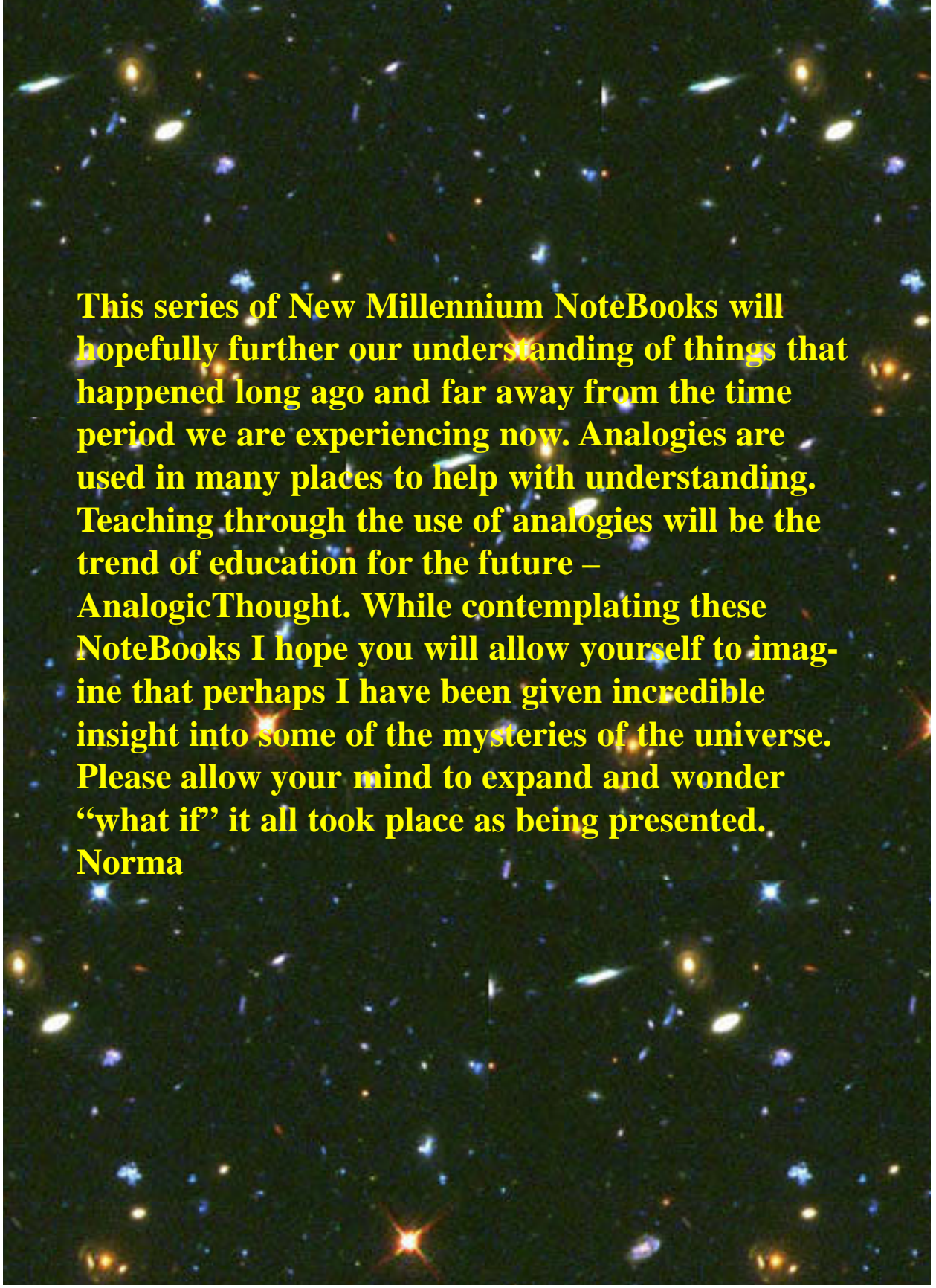
Our galaxy had the same beginning as all life in

the universe. Humanity all has the same oversoul, Michael, the Creator God, so all are tied together this way. The oversoul has His twelve levels (planets) of each solar system. Each individual soul on earth has his twelve levels of each planet (twelve levels for each of twelve mind dimensions) to evolve through. The oversoul must evolve through the twelve planets, which are the planes of progress for Him, before He can exit this solar system. The galaxies are in order. The gaseous cloud of dust that forms solar systems, that will form the next one, is already forming and can be detected by our astronomers. It really is mind-boggling, isn't it? The minds of these new bodies will be



Science & Art Products

The Andromeda Galaxy is like an “island in space” made up of more than a hundred billion stars. It is considered “close” to our own Milky Way galaxy, lying just 2 1/2 million light years away.



This series of New Millennium NoteBooks will hopefully further our understanding of things that happened long ago and far away from the time period we are experiencing now. Analogies are used in many places to help with understanding. Teaching through the use of analogies will be the trend of education for the future –

AnalogicThought. While contemplating these NoteBooks I hope you will allow yourself to imagine that perhaps I have been given incredible insight into some of the mysteries of the universe. Please allow your mind to expand and wonder “what if” it all took place as being presented.

Norma