

The Elite Trader Playbook

Your Guide to Consistent Wins

Section 1: Thinking in Probabilities

Key Concept:

Trading is like blackjack:

- Each trade has a chance of winning or losing.
- We have a proven 70% success rate.
- The goal is to stay at the table all night.

Important Points:

- If 100 trades are made over time, we expect to come out ahead.
- But what if you bet too much on one trade?
- What if you lose multiple trades in a row?

That can be a significant setback.

Action Plan:

- Approach each trade on a “trade by trade” basis, just like handling each hand in blackjack.
- We know with our strategy, we will win over time, but we have no idea what the outcome of the next series of trades will be.

Now let's solve the main reason **traders fail.**

Section 2: Position Sizing

Focus:

Long-term growth over hundreds of trades and setups.

Golden Rules of Size:

Options:

- 5% max position size per trade.
- 40% of the fund capital exposed at one time.

Shares:

- 10%-20% position sizing (since we are controlling an asset, we can increase position sizing).
- 80%-90% of the fund capital exposed at one time.

Objective:

Protect maximum drawdown while still promoting growth.

Key Reminder:

- This may seem like a conservative position sizing strategy, but it's crucial to detach from each trade and get used to the reality of losses.

Remember: We're in this for the long game.

These are my personal rules, and none of this is financial advice.

Standard Operating Procedure

Step 1: Weekly Chart Analysis

- First, identify the trend (market bias course).

Bull Trend

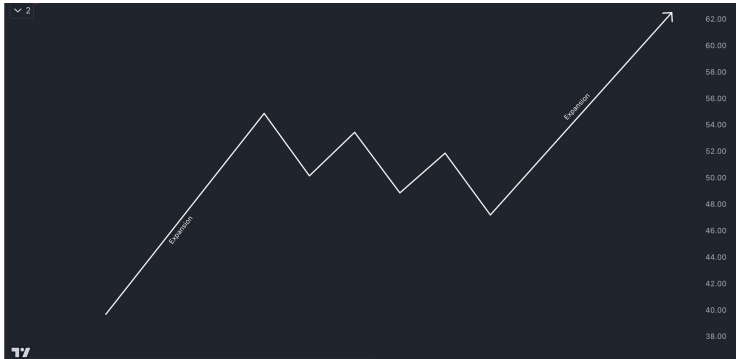


Bear Trend

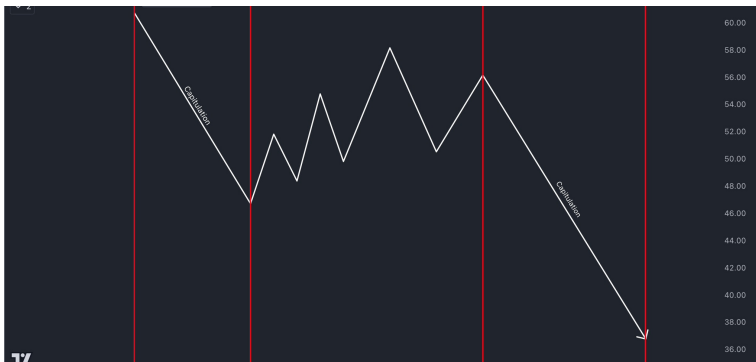


Dictate the “Mode” We Are In

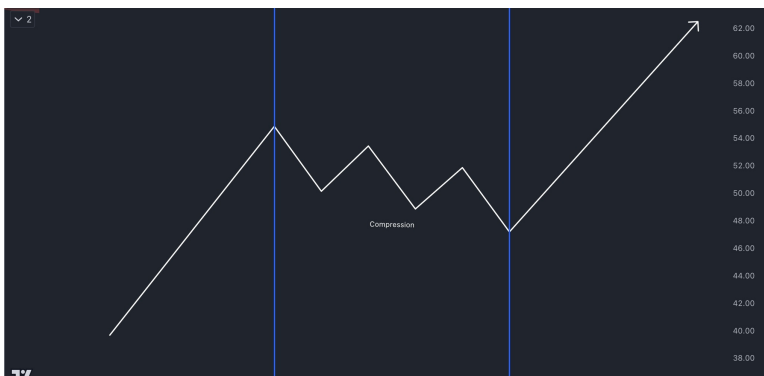
- **Expansion:** Trending market impulse backed by buyers/volume.



- **Capitulation:** Down-trending market sell-off backed by selling pressure/volume.



- **Compression:** Consolidated or undecided market.



Step 3: Buy/Sell Pressure (BX)

- The goal is to buy into bullish accumulation and take profit or manage loss within the formation of lower lows.

How to find BX Trender

FAVORITES				
★	B-Xtrender @Puppytherapy	QuantTherapy	2443	
PERSONAL				
☆	THT BX			
COMMUNITY				
☆	.BXBT Bitcoin Price Index for BitMEX - Gyro	gyromatical	92	
☆	.BXBT Index	NeoButane	45	
☆	Bonsai BX (Backtester)	bonsai_trade	31	

B-X Trender Settings & Style


B-Xtrender @Puppytherapy


Inputs	Style	Visibility
Short - L1	<input type="text" value="5"/>	
Short - L2	<input type="text" value="20"/>	
Short - L3	<input type="text" value="5"/>	
Long - L1	<input type="text" value="20"/>	
Long - L2	<input type="text" value="5"/>	

Defaults

Inputs	Style	Visibility
<input checked="" type="checkbox"/>	B-Xtrender Osc. - Histogram	
Color 0		
Color 1		
Color 2		
Color 3		
<input type="checkbox"/>	B-Xtrender Shadow	
<input type="checkbox"/>	B-Xtrender Color	
Color 0		
Color 1		
<input type="checkbox"/>	Shapes	Absolute <input type="button" value="v"/>

BX Trender Key Terms

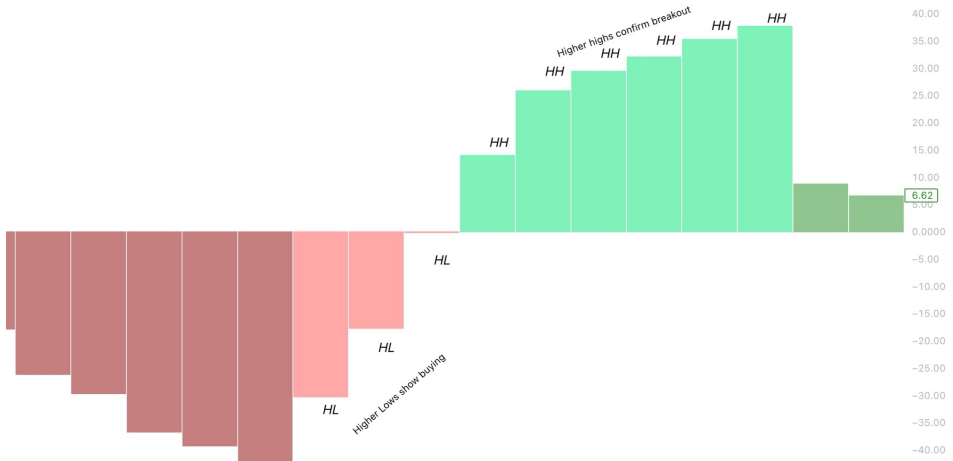
HH = Higher High 

HL = Higher Low 

LH = Lower High 

LL = Lower Low 

Bullish Accumulation

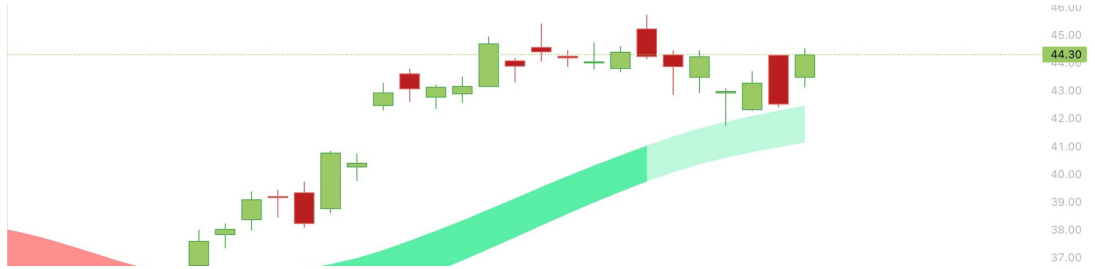


Bearish Re-Distribution

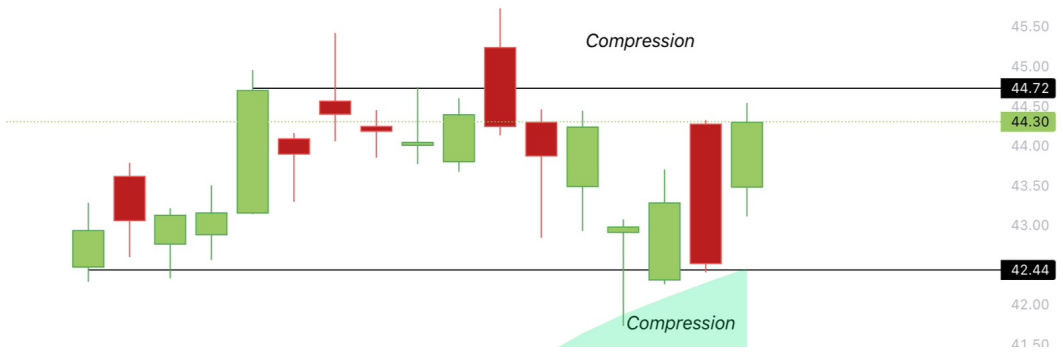


A+ Trade Requirements

Trend: Bullish (market bias).

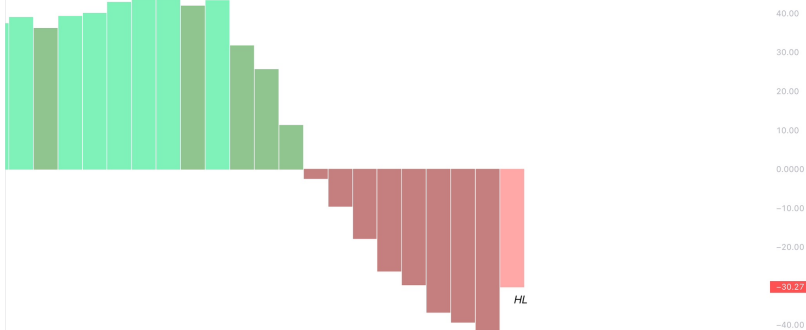


Mode: Compression or pullback to market bias.



Confirmation:

- Is there bullish accumulation (HH or LH on BX Trender)?
- You can enter pre-confirmation for Optimal Trade Entry (OTE), but expect the win rate to decrease.



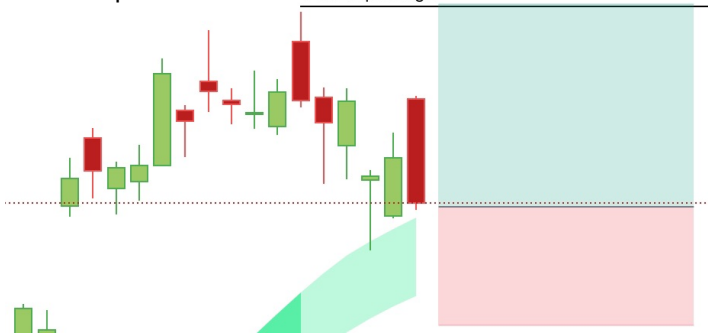
Targets & Stops

All stop losses and take profits are made at candle closure. This is to ensure the indicators are closed

First Target is set at EQ or most recent equal high in price



Stop loss is set at close ~~below~~ **below market bias**



Second target is LH or lower high on BX Trender. Showing accumulation is over



Before Entering the Trade

What percentage of the fund is currently at risk?

- Less than 40% for options accounts. ✓
- Less than 80%-90% for shares. ✓

Allocate Funds:

For a \$10,000 account:

Options: \$500

Shares: \$1,000 - \$2,000

Final Action: Enter the Trade 😎

Now What?

Trading Times:

- You shouldn't be at your desk all day.
- I trade from 9:30 AM – 10 AM and 3:30 PM – 4 PM.




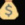




Stop Strategy:

- All stops are based on daily or weekly candle closure.
- What happens during the day (e.g., 11 AM) does not matter.
- Key Focus: Candle closure is what matters most.

Use Before Every Trade 

ELITE TRADER PLAYBOOK

PRE-TRADE CHECKLIST

- PRE-DEFINE THE TREND 
- PRE-DEFINE THE MODE 
- CONFIRM BULLISH ACCUMULATION 
- CONFIRM YOU HAVE CAPITAL TO TRADE 
- PRE-PLAN POSITION SIZE 
- TAKE 50% PROFIT AT EQ HIGH 
- SET STOP LOSS AT BREAK AND CANDLE CLOSE UNDER MARKET BIAS 
- MONITOR FROM 3:30 PM – 4 PM DAILY 

@TRADERS HELPING TRADERS

WWW.THTCOMMUNITY.COM