

NOVALASH[®]
AMERICAN
VOLUME[®]
& THE ART OF THE EYES







Lashes by Sophia Navarro
Makeup by Cindy Hernandez

© 2019 NovaLash Inc.

ALL RIGHTS RESERVED. No part of this work covered by the copyright herein may be reproduced, transmitted, stored or used in any form or by any means graphic, electronic, or mechanical, including but not limited to photocopying, recording, scanning, digitizing, taping, web distribution, information networks, or information storage and retrieval systems, except as permitted under Section 107 or 108 of the 1976 United States Copyright Act, without the prior written permission of the publisher.

For product information and technology assistance, contact us at **NovaLash, 713-520-5848**.

For permission to use material from this text or product, please call **713-520-5848**. Further permission questions can be emailed to **info@novalash.com**.

NovaLash

6116 Skyline Dr., Suite 201

Houston, TX 77057

To learn more about NovaLash, visit **www.novalash.com**

Purchase any of our products at our online store **www.novalash.com**

Notice to the Reader

Publisher does not warrant or guarantee any of the products described herein or perform any independent analysis in connection with any of the product information contained herein. Publisher does not assume, and expressly disclaims, any obligation to obtain and include information other than that provided to it by the manufacturer. The reader is expressly warned to consider and adopt all safety precautions that might be indicated by the activities described herein and to avoid all potential hazards. By following the instructions contained herein, the reader willingly assumes all risks in connection with such instructions. The publisher makes no representations or warranties of any kind, including but not limited to, the warranties of fitness for particular purpose or merchantability, nor are any such representations implied with respect to such material. The publisher shall not be liable for any special, consequential, or exemplary damages resulting, in whole or part, from the readers' use of, or reliance upon, this material.

acknowledgments

Sophia Navarro

Author

Kelsey Brochu

Project Manager and Copy Writing

Cindy Hernandez

Technical Director

Richard Lerma

Artwork

Jordan Fischels

Photography

Zachary Falb

Editing

table of contents

Introduction	8
Materials	9
American Volume Introduction	10
Lash Comparison Chart	11
Box Muscle Memory	15
Practicing American Volume	16
The Art of the Eyes	26
Allergic Reactions	30
American Volume Lash Chart	32
Model Log	33
Student's First Order	34
London Volume Online Training	35

introduction

In 2004 NovaLash was founded, the first distribution and training network for eyelash extensions outside of Korea. At the time few people had ever heard of eyelash extensions. Ever since that humble beginning, NovaLash has been at the forefront of an industry that has seen continued explosive growth. With its dedication to product development, safety and innovation, NovaLash still leads the way in an industry whose bright future stretches as far as the eye can see.



Also key to NovaLash's success has been its commitment to training NovaLash's customers in the proper use of its products. This is something I know about firsthand. I was an independent makeup artist who decided I needed another skill to increase my income, so I decided to enroll in the second class that was ever offered by NovaLash. That was one of the best decisions I ever made. Nervous, and at first discouraged by my slowness, I did not give in to my frustration, but instead, practiced, practiced, practiced. Within six months I had so many eyelash extension clients that I quit makeup altogether. Sophy Merszei, CEO of NovaLash, and I opened the Lash Company in 2007, one of the United States' first eyelash salons and the first in Houston, TX.

Through my hard work and dedication, I soon began developing my own techniques to increase my speed. My techniques were soon taught worldwide at all NovaLash trainings. Since 2007 my techniques have been taught to countless thousands of students for NovaLash throughout the United States and in Europe and Asia, and I still have a regular clientele at the Lash Company. In 2011, due to Sophy's lobbying of the Texas State legislature, the State of Texas passed a law creating a specialty license for eyelash extensions. My eyelash separation technique was chosen as part of the required curriculum under the new law.

Before writing this manual I had always used NovaLash's excellent Seminar Skills Manual along with prepared handouts and my own lecture notes in my advanced training classes. But since the volume lash technique has begun to grow in popularity, NovaLash and I decided that our approach to volume lashes deserved its own manual. We call that technique American Volume lashes. When talking to other extensionists who have learned different methods of applying volume lashes, I have become aware of how many extensionists give up applying volume lashes because it takes too long. Consequently, the NovaLash method stresses speed. With practice, the extensionist should be able to apply an American Volume set in very close to the same time it takes to apply a traditional set of lashes, and of course, charge a higher price. We cover American Volume flare preparation, application, instant isolation, the Navarro 1 through 6 speed technique, and American Volume bottom lashes. We believe our method will give your client a look that is superior to any other volume method.

In addition to American Volume lashes, this manual discusses other subjects that should be known by all experienced eyelash extensionists. The Art of the Eyes gives recommendations for nine different eye shapes. Problem solving and troubleshooting suggestions are given throughout the manual. And in an area that I believe is wrongfully neglected, I present my own detailed steps for strip lash application.

Time is money, as the saying goes. Thus the importance we place on speed. But we will also review other ways to aid in making your extensionist career a success. As a small business owner, I always draw upon my own experiences to give you real world solutions. One example of that is the inclusion at the end of the manual of NovaLash's discussion on allergic reactions.

I am so glad that you have taken this opportunity to learn with me, and grow your career in this industry that means so much to me.

A handwritten signature in black ink that reads "Sophia Navarro". The signature is fluid and cursive, with the first name "Sophia" and last name "Navarro" clearly legible.

materials

High Speed Platinum Bond™ by NovaLash® for Volume Lashing

Features:

- Physician-developed
- Extra Strength award-winning formula
- Oil resistant
- Water-proof and sweat-proof
- U.S. Patent-pending
- Only sold to certified NovaLash professionals
- Packaged in an U.S. FDA inspected facility



Diamond Volume Forceps

Features:

- Coated with 100% real natural crushed diamonds
- Precision tools
- Resistant to corrosion
- Made in Switzerland

American Volume by NovaLash®

Features:

- Soft and supple texture
- Comes off strip easily
- Extremely light weight
- Excellent choice for sensitive eyelid skin
- Maintains curl when wet & does not lose curl
- Longer lasting and requires less retouching
- Better flex and curl
- Wider volume and thicker look
- Does not pull or irritate skin



american volume introduction

American Volume vs Russian Volume

While the Russian Volume technique tends to use only one size of fans all the way across the lash line, the American Volume technique implements differing sizes throughout the lash line giving a more natural appearance. The Russian technique also tends to look false and perfectly symmetrical. One size or two sizes are traditionally used where the shorter length is in the inner and outer corners with the longer length in the middle. Commonly no 8mm are used in Russian Volume sets. Lash mapping is used which doesn't produce long-term results. Lash mapping can damage the natural lashes if longer length extensions are placed on shorter growing anagen lashes. Lash mapping might provide an immediate look that is too perfect to be real and once the lashes start to grow and shed the map is disrupted and the look is messy. American Volume requires that extensions are applied according to the natural lashes growth cycle and at least 3 different lengths of extensions are used.



American Volume



Russian Volume

1D, 2D, 3D, 4D, 5D, etc.



These names refer to the amount of extensions placed on each individual natural lash, with 1D being the Classic Technique of one extension on one natural, 2D being two extensions on one natural, etc.

When using thinner diameter extensions, such as a .05mm or a .07mm, always implement the 4D or higher technique to ensure that the lashes have a thick appearance. Always remember to respect the integrity of the natural lashes.

While both open and closed fans are acceptable, the use of open fans allows you to achieve a fuller, fluffier look that closed fans cannot. American Volume lashes need to be opened with plenty of air and space between the fibers.



However, there is such a thing as fans that are either too open or too closed. When a fan is too open it will not hold together at the base, and when a fan is too closed it looks no different than a classic lash.



NOVALASH®

AMERICAN VOLUME®

Lash Comparison & Recommendations

Classic Diameter Comparison

Approximate Weight Comparison
for One Classic .15mm Diameter Lash

Two	.10mm
Three	.07mm
Six	.05mm

Volume Diameter Recommendation

Recommended Volume Lash usage
for One .15mm Diameter Lash

Two	.10mm
Three to Four	.07mm
Five to Six	.05mm

Classic Diameter Comparison

Approximate Weight Comparison
for One Classic .20mm Diameter Lash

Three	.10mm
Six	.07mm
Nine	.05mm

Volume Diameter Recommendation

Recommended Volume Lash usage
for One .20mm Diameter Lash

Two to Three	.10mm
Four to Five	.07mm
Six to Eight	.05mm

Classic Diameter Comparison

Approximate Weight Comparison
for One Classic .25mm Diameter Lash

Six	.10mm
Ten	.07mm
Fourteen	.05mm

Volume Diameter Recommendation

Recommended Volume Lash usage
for One .25mm Diameter Lash

Four to Five	.10mm
Six to Eight	.07mm
Eight to Ten	.05mm

Forceps: One Curved One Straight

NovaLash uses one Dumont curved tool in the non-dominant hand for isolation. This tool is precision made to effortlessly assist in the isolation process of the natural lashes. In the dominant hand the Diamond Volume tool is used to create fluffy, open fans. If a stylist prefers to use a straight tool for isolation, that is acceptable. It is suggested to try working with the Dumont curved tool as it has been widely accepted as one of the best forceps for lash isolation in the industry.



Dumont Curved



Diamond Volume

Using your Glove as your Palette

Lash smarter and faster by saving time – place your parafilm, volume lash strips and adhesive on the back of your gloved hand with double sided tape. You can decrease your application time due to the close proximity of all your necessary application materials. Make sure to wear the glove on your non-dominant hand. Do not use a latex glove as NovaLash is a latex free brand – use a vinyl or nitrile glove instead. Use a light colored glove so that lashes stand out.

You may also use the double sided tape on the back of your glove, and use it to assist you in making a better, wider fan.



Removing Lashes from a Strip

Peel to the side and lift.

Using your forceps grasp anywhere from 2-8 lashes and slowly peel them off the strip while simultaneously bringing them down at a 45° angle. This helps “fan” the lashes at the tip instead of allowing them to spread apart at the base.

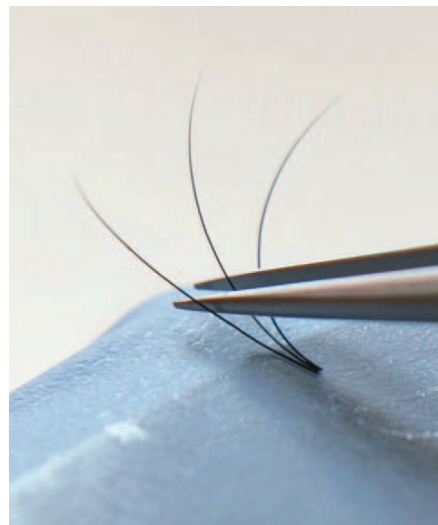
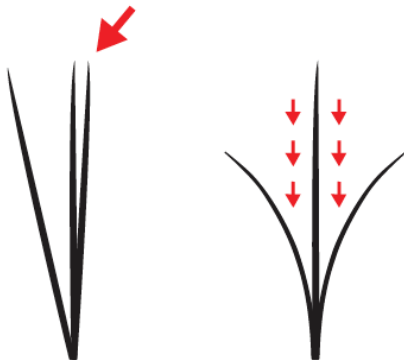


Grip and Wiggle Down

In this technique, use your forceps to grip your 2-8 lashes at the base, and wiggle the lashes down from the strip to peel them off. This also helps to naturally “fan” the lashes, cutting down your preparation time before application.

Opening Lashes into a Fan

Place your group of lashes onto your double sided tape, and then use your forceps to separate and open up the lashes by sliding the forceps down and in between the individual lashes.



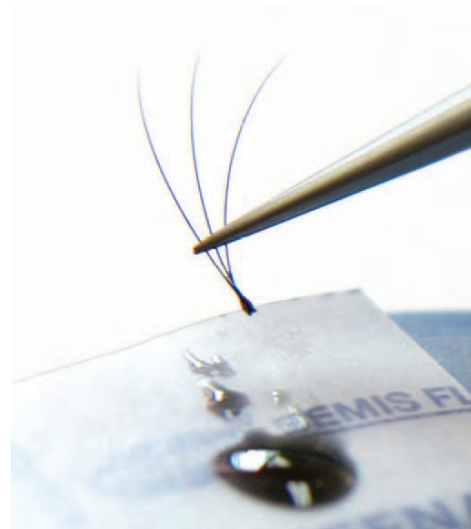
Grabbing your Fan of Lashes

To ensure your fan of lashes is held together during application, be sure to always grip close, about 2mm - 4mm, away from the base using your forceps.

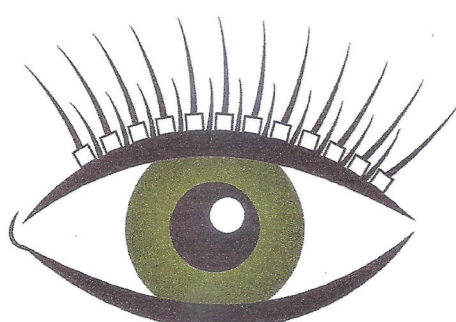
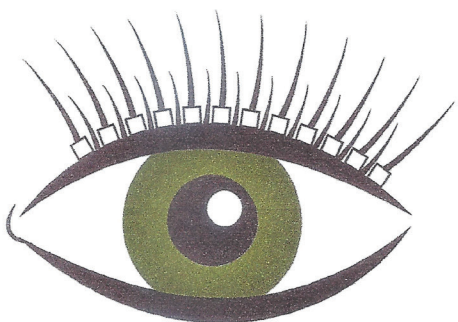
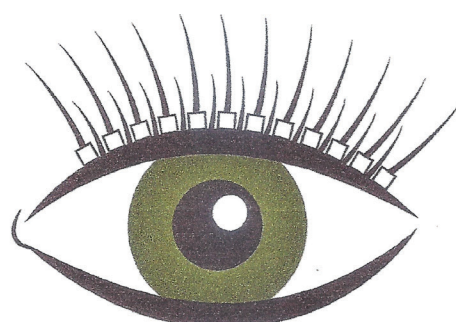
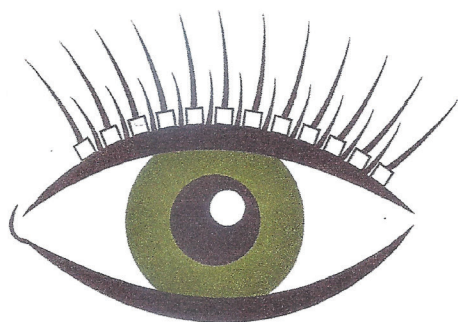
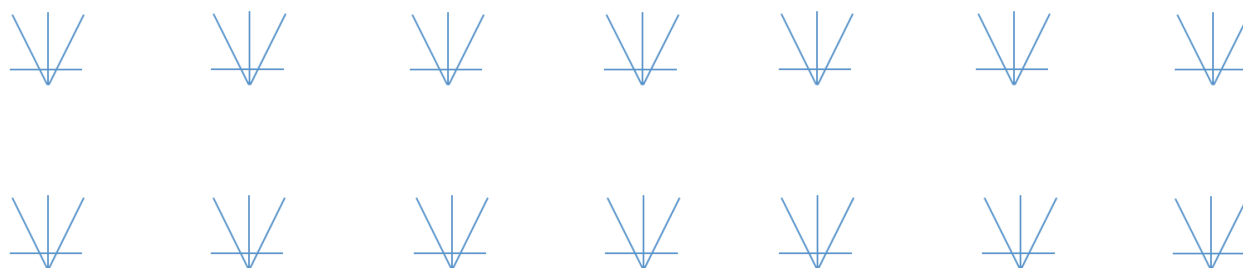


Securing your Fan of Lashes

Sometimes just the application of adhesive at the base of your extensions will cause them to fan open. Regardless of your method of fanning, each fan should have a drop of adhesive at the base to secure them together. You must be careful to not apply adhesive too far up the fan, or you risk closing it. If the base of your fan is not perfectly formed or tight, try to dip the base of the fan into the adhesive bubble and it could pull the base together neatly. This does not always work. Try this before wasting the fan and discarding the lashes.



box muscle memory



practicing american volume

Practicing Fans on Paper using Flares

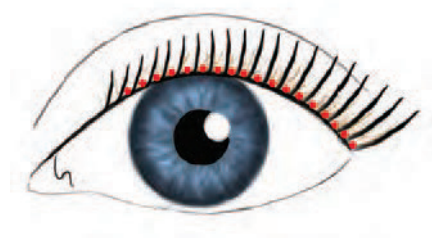
By applying flared extensions onto a piece of paper and applying your fans to the individual lashes, you gain practice with applying your fans to natural lashes without needing a model. Practice, practice, practice is essential to mastering the American Volume technique. This also assists with getting used to the feeling of fanning and applying the larger groups of lashes, as well as your hand-eye coordination.



Isolation

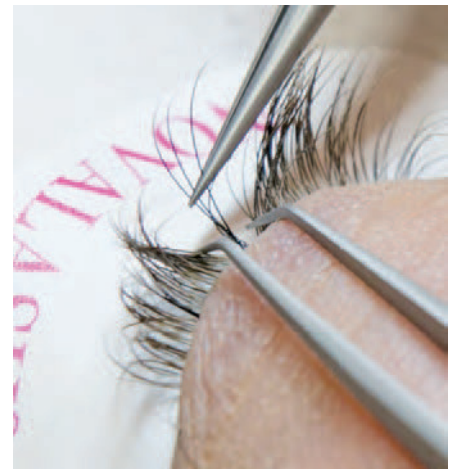
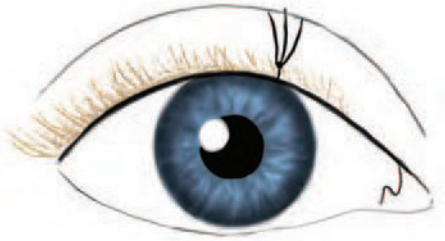
Isolation should be done at the lash line by manipulating your forceps in the down and out method as opposed to a raking method (dragging your tweezer all the way through the lash).

Make sure you have completely separated the lash you are working on from all other natural lashes.



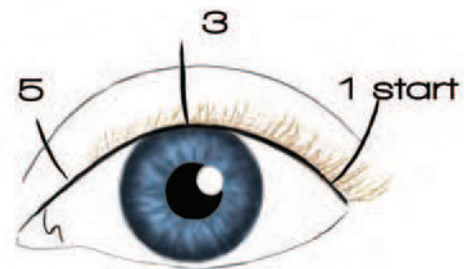
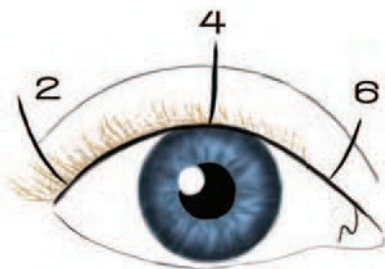
Swiping onto the Natural Lash

After dipping the base of your fan into your adhesive, swipe your fan onto the client's natural lash, approximately 1mm away from the skin. Smooth out the adhesive from the base of the extension onto the natural lash by lightly and gently moving the base of the fan up and down, about 1-2mm on the base of the natural lash. This will make a full and secure bond to the natural lash.

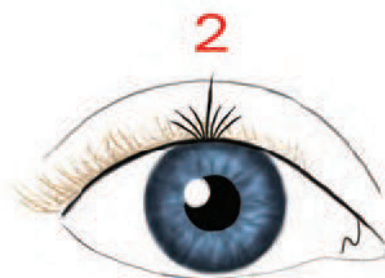


1 through 6 Navarro Speed Application Method

When applying your fans, you should start on the outer corners and work your way in, alternating from one eye to the other after each fan is applied.

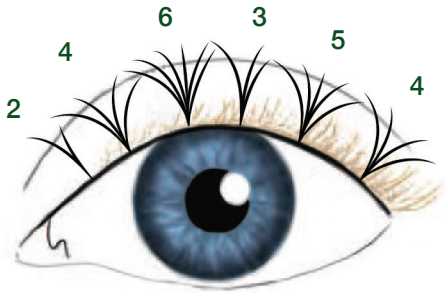


Natural lashes automatically spring to the side when brought down by the tweezer and stay put due to the natural flex of the hairs. The 1 through 6 method gives the adhesive time to dry.

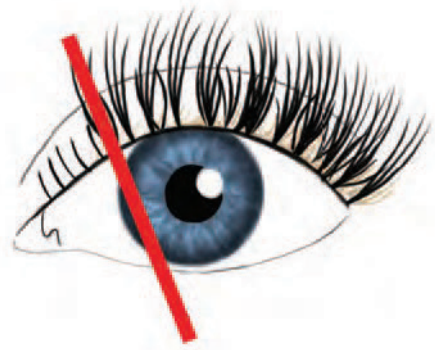


Starting your American Volume Set

We can do a set of American Volume lashes with 2D up to 8D fans mixed all across the lash line. This is what adds to the texture and density of the signature look.

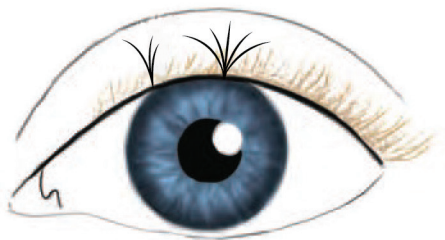


Be careful not to apply your fans too close to the inner corners, doing so tends to look unnatural and can cause some minor discomfort. The inner corners should only have the Classic 1D extensions for the first five or so inner corners lashes.

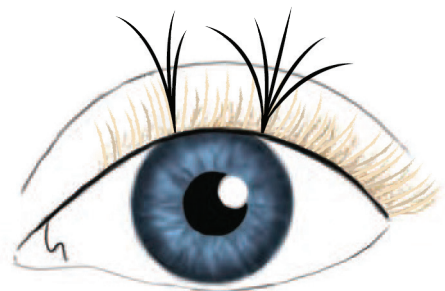


Respecting Natural Growth

Although you are applying a fan of lashes, you still should respect the natural size and thickness of the client's lashes and growth cycle. You would not want to place a long fan of lashes on an anagen phase lash, but you would want to place short fans on a shorter and thinner natural lash.



SHORT



LONG

autoFAN mix camellia

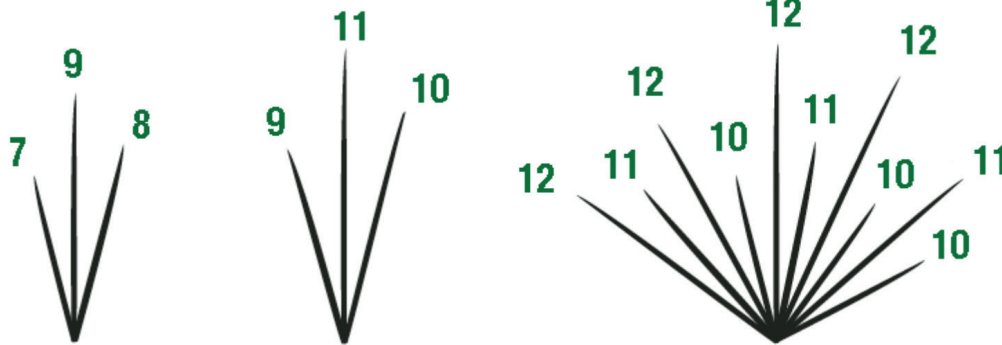
Another method of application is mixing different sized extensions on one natural lash. You can also mix multiple lashes across the lash line, customizing width and length to the client. This is done by using the autoFAN mixed camellias and pulling into them into a fan. The fan is then dipped in adhesive.



The autoFAN mix camellia come mixed sizes:

- 7, 8, 9
- 9, 10, 11
- 10, 11, 12
- Available in C and D curl
- Diameters .03, .05, and .07

These mixed length extensions can be used across the lash line, customizing the look for the client. This is done by placing an open fan of Camellia's on the correct natural lash. Remember to respect the natural lashes growth cycle. Do not use these extensions for a full set.



Separation

Separation is a required step, but will not be needed as much as with the classic technique. Less separation is needed as you will be using less adhesive on each fan than the Classic 1D lash application.

Separation should be done in rounds, at least 3 or 4 times during the application and one final round at the end of the application. Remember to keep your tools close when separating for a strong grip. This will add to the control of the separation.

If you cannot see all the way down to the base of the lash line, adjust your posture, chair height, or model position on the bed.



Any fans that appear to be lifting at the base need to be peeled off. Two fans that are twisted together can gently be separated with your forceps.

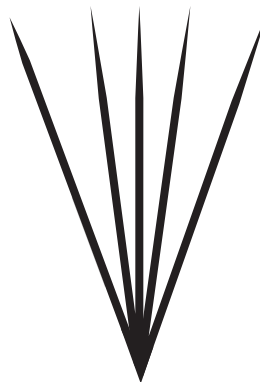


Two fans that are stuck together at the base must be gently pulled apart at the base.



Perfect Base

Make sure that the base of your American Volume fans come to a point. Bases that do not align will not sit on the natural lash properly. Try to pierce the adhesive bubble with your misaligned base to see if it will correct that problem. If not, discard the fan and make a new one.



Be sure to separate across the whole eye down to the base to be sure nothing is left stuck together. If you cannot see all the way down to the base of the lash line adjust your posture, chair height or model position on the bed.



Touch Ups/Infills

Clients should be encouraged to return for a touch up every 3 ½ to 6 weeks. American Volume lashes are able to flex better with the natural lash than the Classics, allowing them to wear longer. Touch ups should still be done in 60 minutes.

All lashes that are lifting, twisting, or unsecured at the base need to be removed. To remove these lashes, you will need to grip the fan to the side while twisting and carefully peeling it off of the natural lash.

American Volume touch ups are very similar to Classic touch ups. You must be sure to apply fans to both the lashes that have had a fan removed, and the new growth. Make sure all anagen stage lashes have 8mm fans applied.

Problem Solving

Make sure that the applied lashes are always orienting in the same direction. One lash pointing towards the nose will cause the whole look to seem unnatural.



When dealing with a client that has natural lashes crimping inwards, be sure to still apply an extension to it to keep both eyes even. Crimped lashes can be caused by a client sleeping on that side of their face, or it can also be their natural growth. Some extensionists are wary to apply to a crimped natural lash because they are afraid it will not stay, but with proper application there should be no problem.



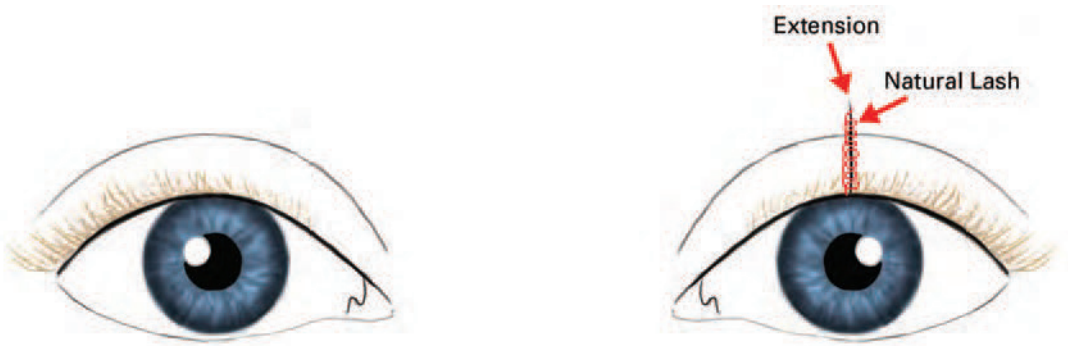
Do not apply fans to natural lashes at the outer corner if the natural lash sticks out. There is not further need to emphasize it.



Some clients may have a natural gap in their lashes, where they are very small anagen stage lashes. While many people may want to place longer fuller fans on these lashes, you should instead apply Classic 6mm extension on the natural lash. If a fan is placed in that area, there will be a large gap once it is shed.



The natural lash may sometimes spiral during the removal process, but that is no reason to not apply a fan to it. Despite seeming like it will show, it won't.



When a client requests a thicker look, 8mm extensions should be used. The shorter the lashes used the thicker the appearance at the lash line.

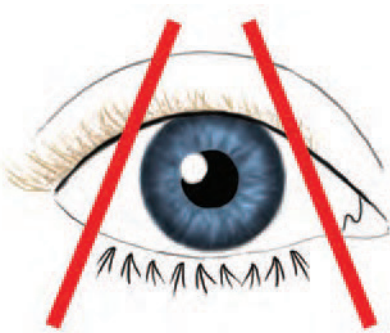
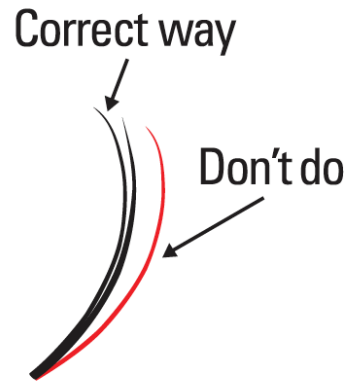


Candied lashes should be customized to each client by trimming them to size. There is no rule of the amount of Candied lashes that may be used, however 3-6 is the recommended amount per eye. Candied lashes are to be applied using the Classic 1D technique. You may either stick to one color, or mix a few. When the gleam is gone, the lash is left with a dark base giving no reason for removal.



Never apply extensions under the lash, always apply to the top side. Applying to the underside of the lash may cause them to feel like Velcro to the touch.

When a client with Classic Lashes is interested in switching to American Volume, there is no need for a removal. This is the perfect opportunity to transition them to the American Volume as it blends with the Classic lashes seamlessly. The same thing may be done with clients coming from a different salon who request American Volume.



American Volume Bottom Lashes

Using only 2D fans and your NovaLash Sensitive Eyes Lash Adhesive, apply bottom lashes as you normally would, placing the fan on an individual lash and turning it to face down with your forceps. Because the eye will be open during application, you cannot isolate or separate the bottom lashes. Be sure to stop applying lashes towards both the outer and inner corners to prevent tangling of the top and bottom lashes.

Use classic 6mm if the 8mm American Volume extensions are too long for the client's eye or face shape. Also, only use B curl as C curl and D curl are too curly and will touch the bottom of the under-eye area.

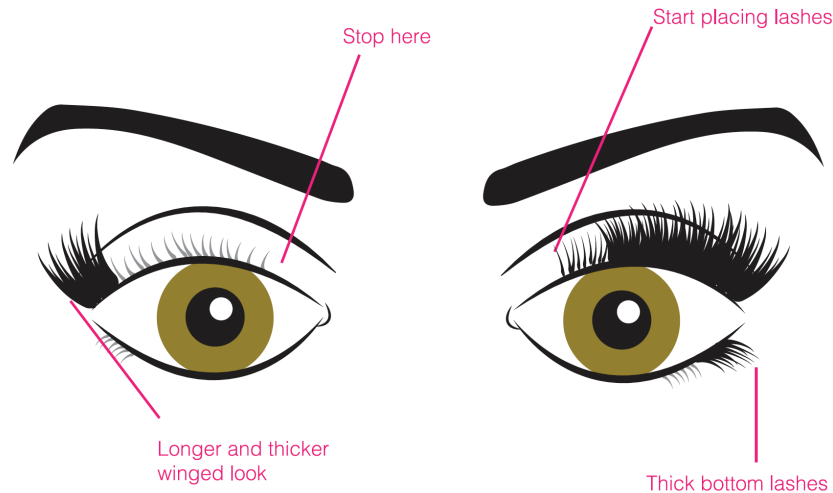


NOTES

the art of the eyes

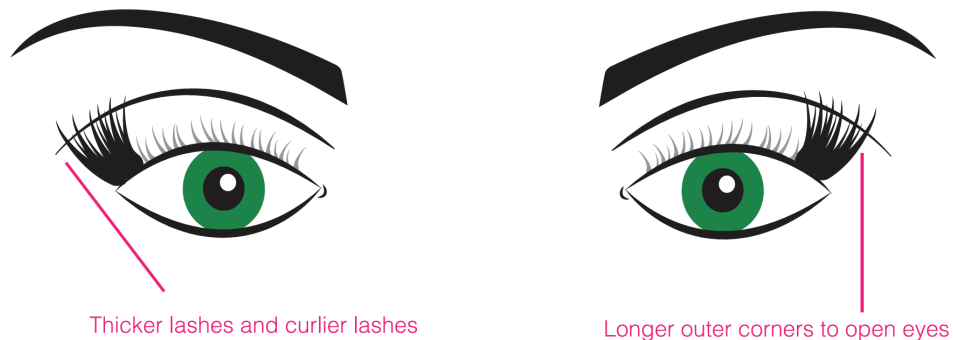
Close Together Eyes

When working with a client whose eyes are close together, you want to emphasize the outer corners.



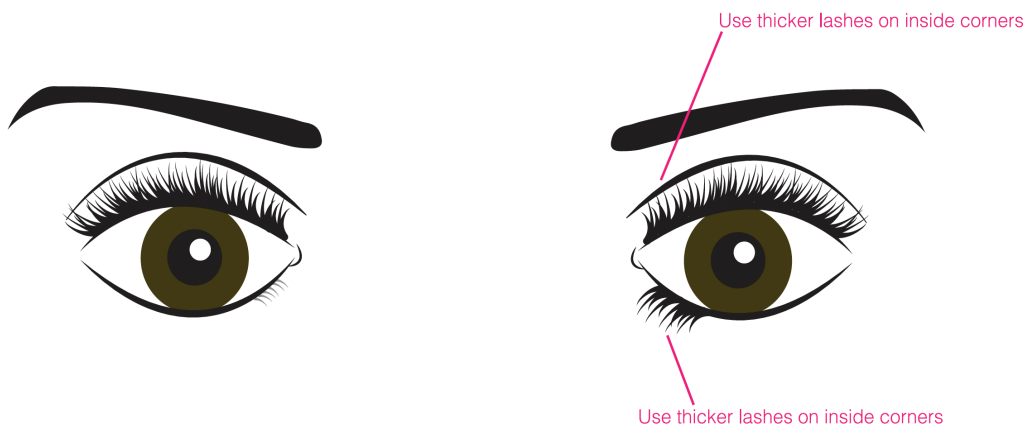
Small Eyes

Clients with small eyes should have extra curl and length placed towards the outer corners to help open them.



Wide Set Eyes

Clients with wide set eyes should have thicker lashes applied to the inside corners to make them appear closer to the nose.



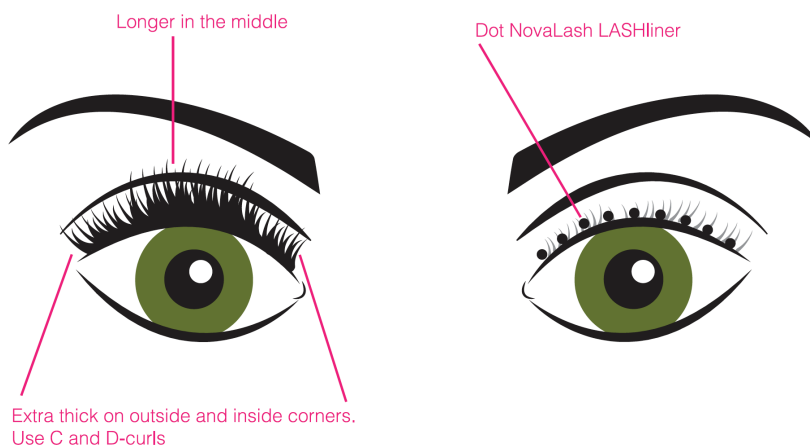
Hooded Eyes

If a clients' eyes appear slightly closed, they are considered hooded. By using shorter and thicker lashes all across the lid, you can make the eyes appear larger and more open.



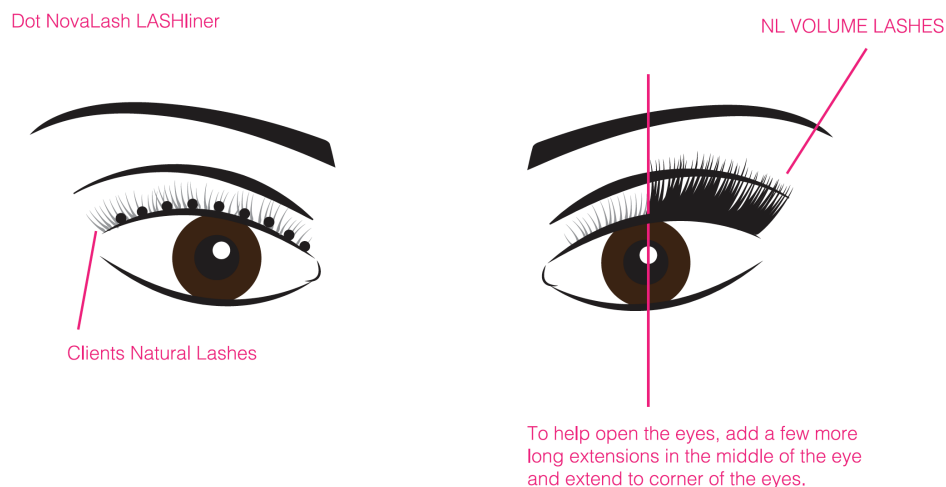
Almond Eyes

Starting in the middle, use longer lashes to open the eyes. NovaLash LASHliner may be used to thicken as well. With almond eyes, use longer lashes in the middle and thicker on the inner and outer corners. Be sure to use C and D curls, and NovaLash LASHliner to enhance the thick appearance.



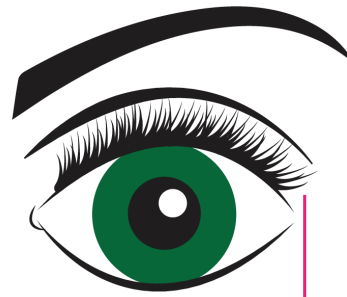
Asian Eyes

Starting in the middle, use longer lashes to open the eyes. NovaLash LASHliner may be used to thicken as well.



Prominent Eyes

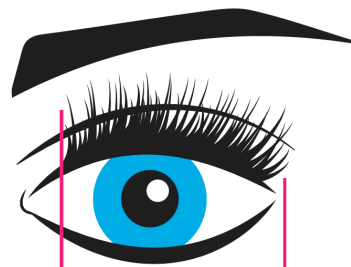
Balance Prominent eyes by using shorter and thicker lashes.



Balance the eye by using shorter and thicker lashes.

Deep Set Eyes

Mix long and curly C and D lashes to bring out deep set eyes.



Mix long lashes with curly lashes.

Cat Eye Look

The Cat Eye Effect is one of the most popular and requested looks as it works with almost every eye shape.



Everyone loves the Cat Eye Look

NOTES

allergic reactions

Allergic reactions are very complex because they can be caused by many different factors relating to the eyelash extensions and they can manifest themselves at any time and in many different ways. Some people experience redness and swelling of the eyelid close to the lash line. Some people have diffused redness and swelling all around the general eye area. Most of the time the redness and swelling is accompanied by itching.

There are several different causes of reactions and it is important to be able to distinguish a true allergic reaction from simple irritation. Irritation also has several different causes, and differs from a true allergy in that it does not cause the body to produce histamine. Sometimes the only way to distinguish between an allergy and irritation is to see if the symptoms respond to anti-histamine medications such as Benadryl. Because we cannot give medical advice to our clients, we sometimes have to refer them to their family doctor if we suspect that they may be having a true allergic reaction.

So, how can a lash artist recognize the causes and symptoms of a true allergic reaction to eye lash extension products? There are many variables. The following is a list of variables that must be considered:

Medical Tape

A large portion of the population (up to 15%) has severe allergies to medical tape and Band-Aids. Many of these people are not aware of the allergy until they have lash extensions applied. The under-eye stickers are similar to medical tape and the skin around the eyes is much more sensitive and thin than skin on the rest of the body and it reacts much more severely than one might expect. This allergy can appear at any time. Symptoms can develop after years of using lash extensions, or they can appear the first time the products are used. To rule out tape allergies, use no stickers or tape on these clients. For most people, gel pads are a good substitute. Tape allergies usually present themselves with generalized redness and swelling to the whole eye area, not just redness and swelling along the upper lash line.

Cyanoacrylate Adhesives

Allergies to cyanoacrylate-based adhesives are difficult to distinguish from irritation from eyelash extensions in general. Cyanoacrylate allergies can develop at any time. They can start after years of use, after one use or after a few uses. Generally they manifest as a red, swollen, itchy lash line. If you examine the skin in between the eyelashes and see microscopic dots of adhesive on the eyelid skin, this will add to the possibility of a reaction. If these dots are present, there is a good chance they are having a reaction to the glue.

Lid Irritation

Eyelash extensions themselves can cause irritation of the eyelid skin because they sometimes rub against the eyelid skin while the client is sleeping. The thicker the extension, the more irritation they can cause in sensitive individuals. To rule out mechanical (i.e. non- chemical) irritation, try switching to the thinnest extensions 0.15mm for classic or 0.05mm for American Volume. If the symptoms are reduced or eliminated, you can conclude that the adhesive is not the cause. People with sensitive skin are more likely to suffer eyelid irritation from the friction of thick lash extensions rubbing against the lid. Make sure the extensions are placed perfectly on the lash. If they are too close, they will rub against the lid and cause itching, redness and swelling. If they are too far away, they're able to move around too much, which causes more friction and irritation when sleeping. This also causes itching, redness and swelling.

Seasonal Allergies

Some people who suffer from seasonal allergies find that they have to remove their lash extensions for about two months out of the year when the pollen count is at its highest. Again, the symptoms are the same; swelling, itching and redness. This generally happens in the springtime, but some people have allergies to pollen that blooms in the fall or summer.

Eye Irritation

Many people with sensitivities to Platinum Bond or High Speed begin getting irritated during the procedure itself. When the sticker is placed too tight on the lower lid, it holds the lid open by about 1mm or less. This allows fumes from the adhesive to escape into the eye while the procedure is being done. Some people feel stinging, burning and irritation. Others feel nothing at the time, but wake up the next morning with red, swollen, itchy eyes. If the client leaves the salon with redness in the whites of the eyes, it can be concluded that the eye itself has been exposed to glue fumes. To prevent exposure to fumes, take a moment to visually inspect the under-eye sticker and/or gel pads from under the eye. It is necessary to stand up and walk around the table to view the upper and lower lids and check for a tight seal between the two. You can also use the Reflector to see under the lash line area.

Exposure to fumes can also take place when the client opens their eyes too soon after the procedure. To prevent this from happening, use of the AirNova drying machine is very helpful. Take a few minutes to dry both eyes with the machine before allowing the client to open their eyes. If the client feels any irritation or their eyes are watering at all, have them close immediately and repeat the process for a few more minutes. Care should also be taken not to lift the lid by applying too much pressure to the lashes during the separation process. Lifting the lid can cause fumes to escape into the eye. If using a drying fan and miniMr for the drying process, allow around 5 minutes for the drying process.

Skin Conditions

Clients who suffer from inflammatory skin conditions such as eczema and rosacea are much more likely to suffer reactions to eyelash extension products. There is even a sub-type of rosacea that specifically affects the eyelids. Again, the symptoms are redness, swelling and itching. Many people may not even be aware that they suffer from Rosacea at all until they have a problem with their eyelash extensions. It is possible to have eyelid rosacea triggered by irritation from eyelash extensions even if the client does not suffer from rosacea on other parts of the face.

So, what should you do if your client seeks your advice after she has had a reaction?

There are several over the counter medications that can help alleviate the symptoms of allergies and irritation. Because we cannot give out medical advice, it is always important that beauty professionals do not suggest the use of any medications or medical treatments for eyelash extension allergies. Always recommend that the client see their doctor. When giving advice about medications, we can only say, "I can not give you medical advice or suggest that you use a certain medication; however I have one client who uses over the counter Benadryl before getting her lashes touched-up." The use of this medication is common with people who suffer from allergies, but always take care never to recommend them.

Should I remove the extensions from someone who is suffering from an allergic reaction?

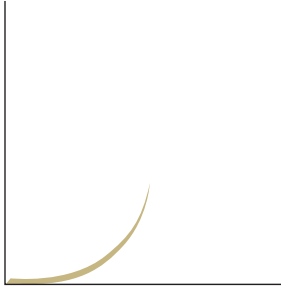
Yes, take into consideration that after the client stops taking the medication they are prescribed the reaction will come back if it is a true allergic reaction to the adhesive. Keep in mind that if the removal is not done correctly, more irritation will result. If you do not remember how to perform a removal properly, contact NovaLash or your trainer for more support.

How do I patch test a client?

A patch test is performed by applying 6-8 extensions to the eyes and waiting 24 hours to see if any irritation occurs. Look for redness, itching, swelling or any unusual discomfort or non-normal signs. This method of patch testing is better than applying a small dot of adhesive to the skin. Offering a patch test can be done anywhere from a week prior to the appointment or up to 24 hours before the appointment. It might be more convenient for the client to visit you for a patch test 2-7 days before their appointment which is fine. Performing a patch test does not always guarantee there will be no reaction. Also, check with your insurance provider to see if they have patch testing requirements for your insurance plan. Lastly, always make sure to have a full consultation with clients prior to the service and have them fill out a consent form.

AMERICAN VOLUME™

America Volume Lashes
Lash Chart
by Curl, Diameter, and Length



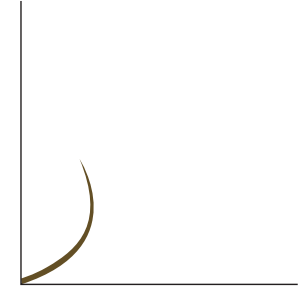
NATURAL CURL
by NovaLash



B-CURL
by NovaLash



CURLY CURL
by NovaLash



D-CURL
by NovaLash

THICKNESS .05MM
LENGTH
• 8mm
• 10mm
• 12mm
• 14mm

THICKNESS .05MM
LENGTH
• 8mm
• 10mm
• 12mm
• 14mm

THICKNESS .05MM
LENGTH
• 8mm
• 10mm
• 12mm
• 14mm

THICKNESS .05MM
LENGTH
• 8mm
• 10mm
• 12mm
• 14mm

THICKNESS .07MM
LENGTH
• 8mm
• 10mm
• 12mm
• 14mm

THICKNESS .07MM
LENGTH
• 8mm
• 10mm
• 12mm
• 14mm

THICKNESS .07MM
LENGTH
• 8mm
• 10mm
• 12mm
• 14mm

THICKNESS .07MM
LENGTH
• 8mm
• 10mm
• 12mm
• 14mm

THICKNESS .10MM
LENGTH
• 8mm
• 10mm
• 12mm
• 14mm

THICKNESS .10MM
LENGTH
• 8mm
• 10mm
• 12mm
• 14mm

THICKNESS .10MM
LENGTH
• 8mm
• 10mm
• 12mm
• 14mm

THICKNESS .10MM
LENGTH
• 8mm
• 10mm
• 12mm
• 14mm

NOVALASH®

 Model Name

 Full Set or Touch up

 Date

Length of Service	Start Time		End Time
Adhesive (Circle one)	Platinum Bond Platinum Bond High Speed Sensitive Eyes		
Extensions	NovaLash Curl B-Curl Curly Curl D-Curl	Length 8mm 10mm 12mm 14mm	Diameter .05 mm .07 mm .1 mm
Extensions	NovaLash Curl B-Curl Curly Curl D-Curl	Length 8mm 10mm 12mm 14mm	Diameter .05 mm .07 mm .1 mm
Extensions	NovaLash Curl B-Curl Curly Curl D-Curl	Length 8mm 10mm 12mm 14mm	Diameter .05 mm .07 mm .1 mm
Bottom Lash Pad (Circle one)	NovaLash Under-eye Sticker or NovaLash Gel Patches		
Quantity of Extensions applied	Left Eye	Right Eye	
Notes			
Total Time of service			

students' first order

Suggestions for Students' First American Volume Order

American Volume Lashes:

B.05

8mm, 10mm, 12mm, 14mm



Diamond Volume
Forceps (extra)

C.07

8mm, 10mm, 12mm, 14mm



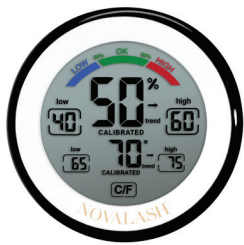
Sensitive Eyes Adhesive

D.05

8mm, 10mm, 12mm, 14mm



American Volume
Posters



the Aura



cleanLASH



LASHwand

Don't forget to offer all clients aftercare!

NOVALASH® LONDON VOLUME

London Volume Online Training

NovaLash's exclusive London Volume technique has been created to give your clients massive volume lashes that are ultra-lightweight and extremely soft. The London Volume look is captivating with its extravagant, dark, dense, and fluffy lash line and various elongating, graceful lengths. Be outstanding, be royal with London Volume Lashes. Your clients will stand out and get noticed when they walk into the room with the colossal volume that this technique creates. It produces bigger, bolder more fabulous fans by using thin, extremely lightweight extensions that are applied safely to the natural lash.

INCLUDES:

3 hours of online training, the highest quality lash products, hands on with case study program, unlimited personal coaching, lifetime marketing support, and a free website business listing with approval.

London Volume Kit:

- Royal Platinum Bond
- Novalash STARlite Forceps
- London Volume C-Curl .03 8mm
- London Volume C-Curl .03 10mm
- London Volume C-Curl .03 12mm
- London Volume C-Curl .03 14mm
- Adhesive Remover 3cc
- Gel Patches (10 pairs)
- 1 sheet of undereye stickers (7 pairs)
- 1 sheet of parafilm (6 squares)



Features and benefits of the London Volume technique:

- ✓ Lashes are oil-proof and instantly waterproof
- ✓ A full set of London Volume extensions can be done in under 2 hours and 30 minutes.
- ✓ Infills are needed every 4-5 weeks (depending on growth cycle, age, medication and activity, infills might be needed every 3 weeks)
- ✓ This unique technique allows lashes to look thick and full even as they shed
- ✓ London Volume services should be priced about 10-20% above American Volume services
- ✓ The average cost per application is \$13.50
- ✓ London Volume extensions are safe to wear even though the look is more full, dense, and dramatic than American Volume. This is due to the use of thinner diameter extensions, which create lighter fans
- ✓ Infills should be completed in 1hr – 1hr 30min

LV ONLINE

London Volume Online Training

- The London Volume online course is self-learning and module based. Train at your own pace.
- Through the NovaLash.com website, students will:
 1. Create an account and pay for their course
 2. Be given comments and feedback on their submitted lash work by a NovaLash expert, during their case study program

novalash.com

WHO?

Who can take the London Volume Class?

Stylists who meet the below criteria:

- Must have a current Cosmetology or Esthetics License
- Must be NovaLash American Volume certified OR have a Volume certification from an approved company by NovaLash.

RPB

About Royal Platinum Bond Adhesive

- Royal Platinum Bond adhesive can only be purchased by London Volume certified stylists
- Students can only purchase more Royal Platinum Bond after completing their case study program and are London Volume certified

©2019 NovaLash

NOVA LASH[®]

