

FIREWORKS – SEW-A-LONG

BY MICHELLE RENEE HIATT

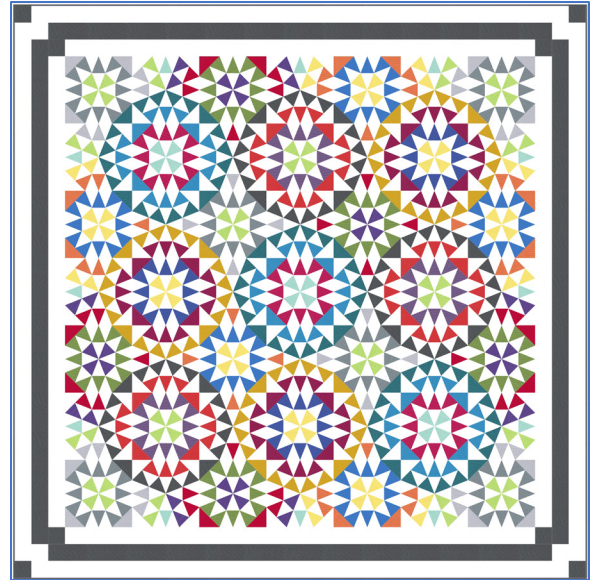
OVERVIEW

Fireworks Sew-A-Long will take place from October 2024 – February 2025*.

Fireworks features the **Studio 180 Design Tucker Trimmer III™** and **Wedge Star™**. The series will be a technique-building series offering different techniques, color-building skills, and organizational tips. Sign-Up: [Teachable.com](https://teachable.com)

- **Empire Border Setting* – 102" x 102"**
- **Without Empire Border* Setting – 90" x 90"**

**You could add a traditional border onto either of these settings.*



TOOLS NEEDED

- Tucker Trimmer III™
- Wedge Star™

SCHEDULE

- Starting in September 2024 running through January 2025. *No lessons will be released in December 2024.
- 16 Lessons plus Finishing Instructions released weekly*, on Fridays (before midnight).

PATTERN & CLASS MEMBERSHIP OVERVIEW

| | |
|------------------------|---|
| Pattern & Online Class | <ul style="list-style-type: none">• Includes pattern and all 16 Lessons. Downloadable each week when the weekly pattern is released.• Online/on-demand weekly Video Lessons which will walk through step-by-step weekly techniques and construction.• Lessons include:<ul style="list-style-type: none">○ Fabric Selection and Tool overview○ Step-by-step lessons on new units (repeat units will feature a high-level overview)○ Block Construction where applicable• Bonus Tips, plus basic Quilting Tips and Techniques.• 10% Coupon Code for Tools and Notions. |
| Email Notification | <ul style="list-style-type: none">• Available with your agreement to receive “promotion” and “product” emails. |
| Pattern Access | <ul style="list-style-type: none">• Lifetime* access to the Pattern and Video Lessons.• Access weekly pattern and Video Lessons at any time by logging onto your Teachable account. <p><i>*Lifetime if you keep your Teachable account that you signed up with.</i></p> |
| Pattern Downloads | <ul style="list-style-type: none">• You can download and save the weekly patterns to your device (cell phone is not recommended).• The Pattern is for your personal use and not to be shared. |
| Facebook Group | <ul style="list-style-type: none">• Access to a private Fireworks Facebook Group (Group to be created on August 1st). |

PATTERN & CLASS MEMBERSHIP OVERVIEW

MEMBERSHIP PRICING

| | |
|---|---|
| LIVE VIDEO PREMIERE – EARLY BIRD PRICING June 4 th – June 10 th | <ul style="list-style-type: none"> LIVE Video Premiere – Early Bird Discount - About \$4.70 a Class Lesson One-Time Payment of \$75 |
| STANDARD SIGN-UP Starting on June 11th | <ul style="list-style-type: none"> Standard Price – About \$6.20 a Class Lesson One-Time Payment of \$99 |

ADDITIONAL MEMBERSHIP DETAILS

| | |
|---------------------------------------|---|
| Platform | <ul style="list-style-type: none"> Weekly Lessons will be released and stored on Michelle’s school on the Teachable Platform. |
| Email Notification | <ul style="list-style-type: none"> If you agree to “receive instruction emails”, you will receive an email notification. Save notifications@z.teachablemail.com as safe address/contact. Otherwise, you can log into your Teachable account each Friday evening and access the current and prior releases. |
| Manage Subscription and Access | <ul style="list-style-type: none"> When you purchase the Membership, you will create an account. You will establish a username and password. You are responsible for remembering your username and password. Note: Michelle does not have access to look up or change this information. You can log onto the account at any time to update your account information or access the released Downloads/Clues. |
| Clue Downloads | <ul style="list-style-type: none"> Downloads encoded with your Teachable account. |
| Sign-Up | <ul style="list-style-type: none"> michellereneehiatt.teachable.com/p/fireworks-sew-a-long |
| Log-In (Once enrolled) | <ul style="list-style-type: none"> https://michellereneehiatt.teachable.com/courses/enrolled |

FABRIC REQUIREMENTS

| | Pattern Color | Moda Sku | Moda Color | Fabric Required |
|----|-------------------------|-----------|------------------|--------------------------|
| 1 | Background | #9900-098 | White Bleached | 7 Yards |
| 2 | Light Gray | #9900-316 | Smoke | 1/3 Yard |
| 3 | Medium Gray | #9900-184 | Steel | 1/2 Yard |
| 4 | Dark Gray | #9900-283 | Lead | 2 Yards* Includes Border |
| 5 | Light Yellow | #9900-130 | Sunshine | 1/2 Yard |
| 6 | Medium Gold | #9900-232 | Saffron | 1/2 Yard |
| 7 | Light Green | #9900-163 | Amelia Green | 1/2 Yard |
| 8 | Medium Green | #9900-228 | Fresh Grass | 1/2 Yard |
| 9 | Light Aqua Blue | #9900-034 | Aqua | 1/3 Yard |
| 10 | Medium Aqua Blue | #9900-270 | Lagoon | 1/2 Yard |
| 11 | Medium Turquoise Blue | #9900-226 | Bright Turquoise | 1/2 Yard |
| 12 | Med-Dark Celestial Blue | #9900-448 | Azul | 1/2 Yard |
| 13 | Med-Dark Blue Purple | #9900-116 | Dusk | 1/3 Yard |
| 14 | Med-Dark Purple | #9900-413 | Vivid Violet | 1/3 Yard |

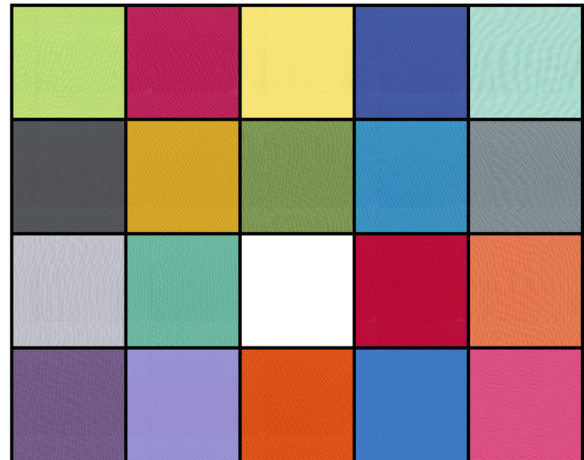
| | Pattern Color | Moda Sku | Moda Color | Fabric Required |
|---------|---------------------|-----------|-------------|-----------------|
| 15 | Medium Purple | #9900-139 | Aubergine | 1/3 Yard |
| 16 | Medium Fushia | #9900-386 | Pomegranate | 1/2 Yard |
| 17 | Med-Dark Blue Red | #9900-144 | Azalea | 1/3 Yard |
| 18 | Light Orange | #9900-295 | Melon | 1/3 Yard |
| 19 | Medium Orange | #9900-383 | Mandarin | 1/2 Yard |
| 20 | Med-Dark Orange Red | #9900-382 | Ruby | 1/2 Yard |
| Backing | | | | 9 ½ Yards |

LIMITED KITS AVAILABLE

If you would like to use the same fabric as Michelle (not required), she has coordinated a kit to be sold independently through [The Yankee Quilter](#). The kits will be directly purchased and managed by The Yankee Quilter.

- **MODA SOLID:** Moda – Michelle has selected this collection of Moda Bella Solids for her quilt. You can get the same fabric in the yardage Michelle specified above. **The Yankee Quilter Kit includes Background and fabric to make the Border and the Binding**

[PURCHASE KIT AT THE YANKEE QUILTER](#)



THANK YOU!

Follow Michelle at: <https://www.facebook.com/sewonthego.net>

Follow the Yankee Quilter at: <https://www.facebook.com/theyankeequilter>

