

Amazing Grace

Trad.

$\text{♩} = 60$

1

5

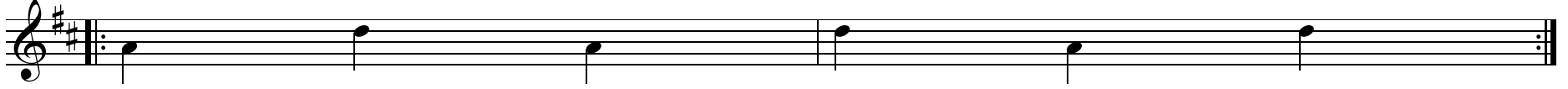
9

13

The image displays a musical score for the hymn "Amazing Grace" in G major (one sharp) and 3/4 time. The tempo is marked as quarter note = 60. The score is presented in four staves, with measure numbers 1, 5, 9, and 13 indicated at the beginning of each line. The music features a mix of eighth and quarter notes, often beamed together, and includes various phrasing slurs. The first staff begins with a repeat sign. The piece concludes with a double bar line and repeat dots at the end of the fourth staff.

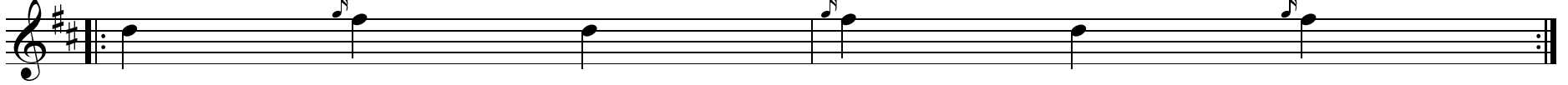
2 Exercise 1: Crossings to D

17



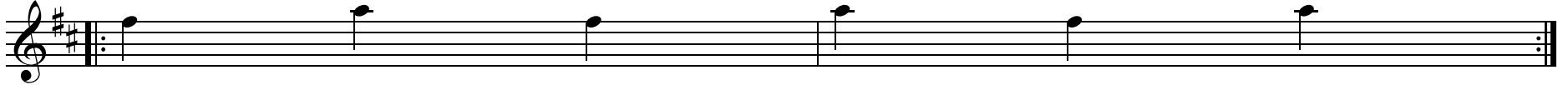
Exercise 2: Crossings to F

19



Exercise 3: Crossings F to Hi A

21



Exercise 4

23

