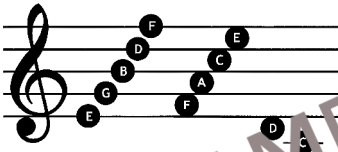


The Friendly Music Staff

TREBLE STAFF



Five lines make the treble staff: E-G-B-D-F.
On the left there is a sign, it's called a treble clef.
Every line has a name, I'll always say the same.

From the bottom to the top: G-B-D-F.
The four spaces in between are F-A-C-E - "face".
Treble spaces spell a word: F-A-C-E "face".

Every space has a name, I'll always stay the same.
From the bottom to the top, I'll remember FACE.

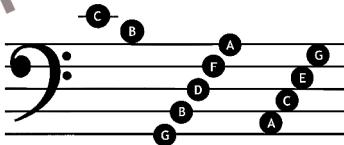
A short line sits between two staves, its name is "middle C".
It keeps them in their proper place; they're easier to read.

The space above is called a "D". The space below is called a "B".
When I know each line and space, then music I will read!

BASS STAFF

Five lines make the lower staff: G-B-D-F-A.
On the left there is a sign: bass clef is its name.
Line and space names never change, if they did, you'd think it strange.
From the bottom to the top: G-B-D-F-A.

There's a name for every space: A-C-E and G,
I'll win this game - "ACE", then I'll add the G.
Line and space names never change, if they did, you'd think it strange.
From the bottom to the top: A-C-E and G.



See video at: <https://youtu.be/OY2Fns7ERfA>

MusicinOurHomeschool.com