

Answer **all** questions in the spaces provided.

0 1 . **1** Glycogen and cellulose are both carbohydrates.
Describe **two** differences between the structure of a cellulose molecule and a glycogen molecule.

[2 marks]

1 _____

2 _____

0 1 . **2** Starch is a carbohydrate often stored in plant cells.
Describe and explain **two** features of starch that make it a good storage molecule.

[2 marks]

1 _____

2 _____

0 1 . **3** Tick (✓) the box that identifies the test which would be used to show the presence of starch.

[1 mark]

Acid hydrolysis test

Benedict's test

Emulsion test

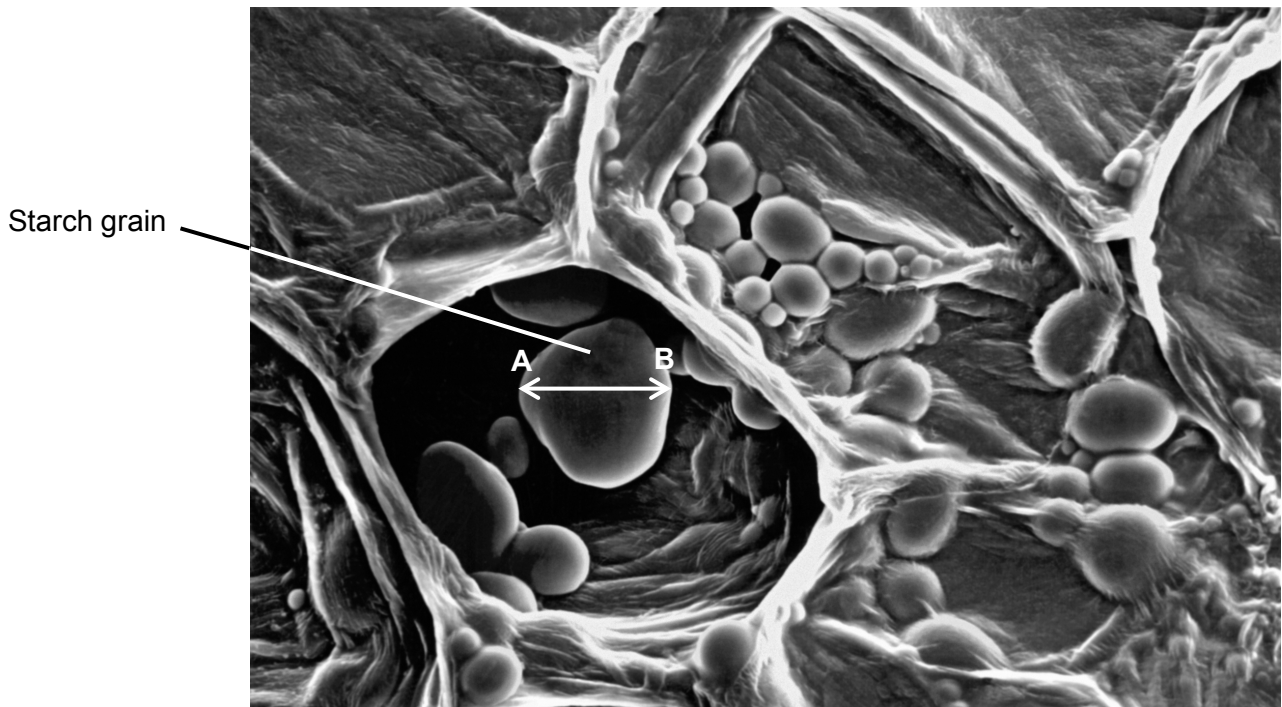
Iodine/potassium iodide test



0 1 . 4

Figure 1 shows a section through a plant tissue at a magnification of $\times 500$.

Figure 1



Calculate the actual diameter of the starch grain between points **A** and **B**.

[2 marks]

Answer = _____ μm

0 1 . 5

What type of microscope was used to obtain the image shown in **Figure 1**?
Give **one** piece of evidence to support your answer.

[2 marks]

Type of microscope _____

Evidence _____

