



# Toddler Extra Activities



## Hands on at Home

### Watering Can



#### You will need:

Empty milk bottle with lid

Needle/corkscrew

Lighter/candle

Water



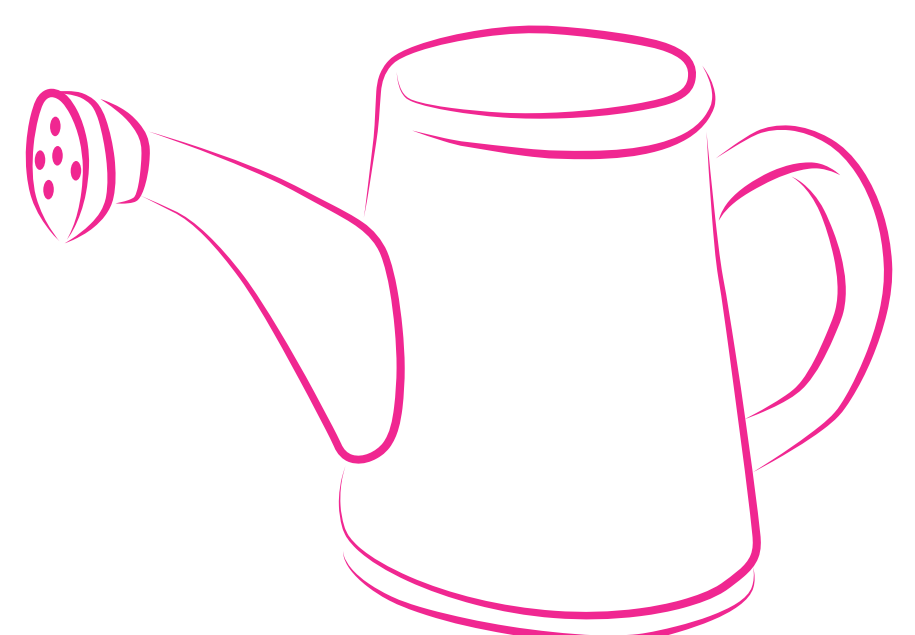
#### Method:

1. Prepare the watering can for play time with your child
2. Do this step alone: heat up a needle in a candle and then push it into the milk bottle lid to make a hole. Repeat this many times until you have lots of holes
3. Once you have packed away all the dangerous items, show your child the lid and let them explore a little, talking about what they can see and feel
4. Fill the bottle with water and put the lid on
5. Now show your toddler how to turn the bottle upside down and squeeze the bottle to water a plant together!



#### ACTIVITY TIP:

This activity focuses on Sensory Development.



**Nanny 'n me**  
growing together



# Toddler Extra Activities



## Hands on at Home

# Milk Bottle Elephant and Elephant Walks

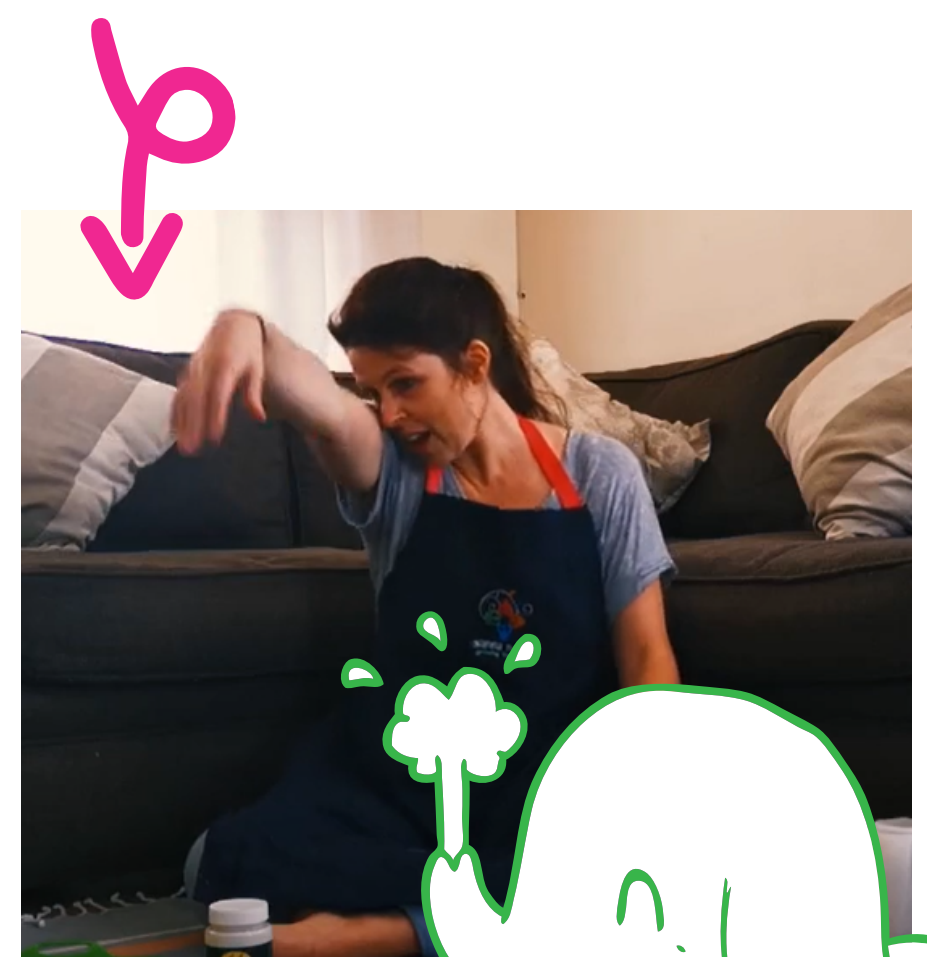
## You will need:

Empty 2L milk bottle  
Scissors  
Black marker  
Brightly coloured paper  
Glue /modge podge  
Round stickers



## Method:

1. Cut off the bottom half of your milk bottle
2. Cut out 4 semi circles in the middle of each side of the bottle to create legs. Keep these semi circles to make ears later!
3. Together with your child, stick on some some colour paper squares to decorate your elephant
4. Add some stickers for eyes and use a marker to make the pupils. Stick on the semi circles you cut out earlier to make some ears
5. When your elephant is finished, pretend to be elephants together, stomping and creating a trunk with their arm



Nanny 'n me  
growing together



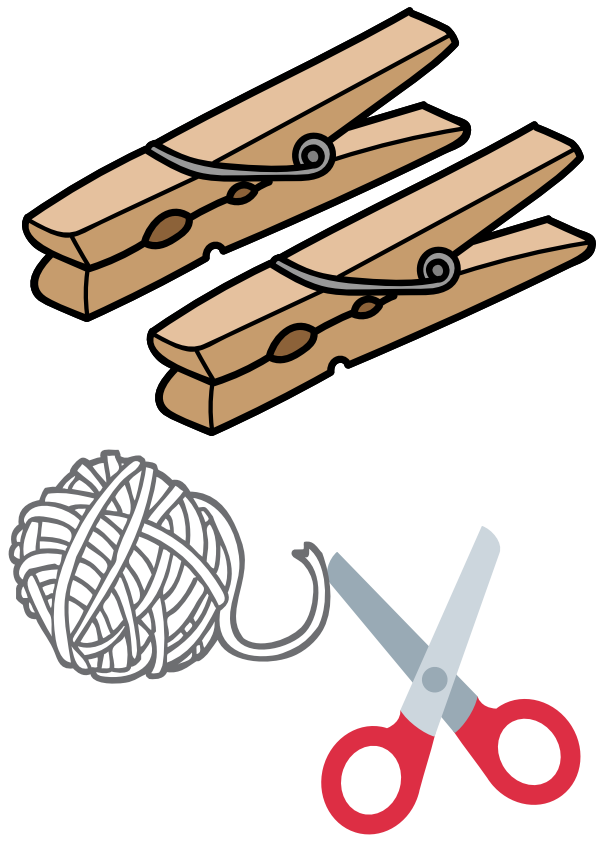
# Toddler Extra Activities



## Hands on at Home

## Pretend Play

### You will need:



Different coloured and sized lids

Pegs

Sticks

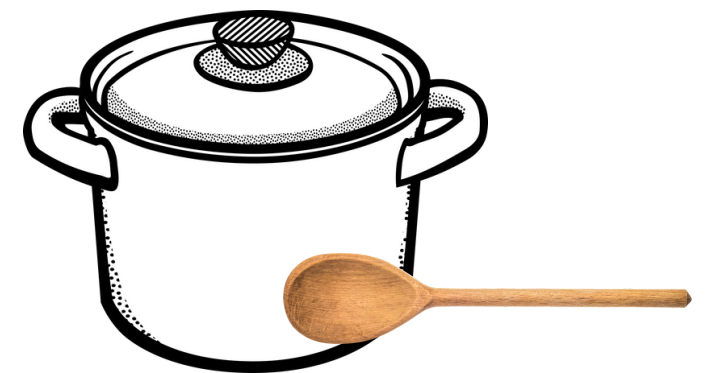
Paper & pen

Scissors & String

Paper plate

Doll clothes/paper & scissors

Cooking/baking items



### Method:

1. Use bottle lids of different colours to pretend to do some cooking and baking. Use sticks as pretend spoons to stir the pot!
2. Tie up some string to make a washing line at your toddler's height. Use some doll's clothes or your child's clothes and some pegs to hang up the washing



### ACTIVITY TIP:

This activity works your Little one's Social-Emotional and Language Development.



**Nanny 'n me**  
growing together



# Toddler Extra Activities



## Hands on at Home

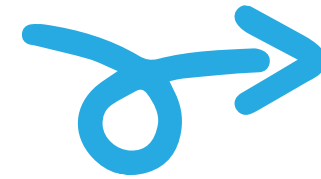
### Picture Play

#### You will need:

Different coloured bottle lids  
Sticks



Cardboard/paper  
Prestick (optional)



Paint/khokis/pencil crayons



#### Method:

1. Use bottle tops and sticks to create a picture! Trace around your lids and make a colourful, imaginative picture



✓ **ACTIVITY TIP:**  
This activity is  
working your Little  
one's **Thinking**  
**Development** and  
**small hand muscles.**



Nanny 'n me  
growing together