

# FIREWORKS – SEW-A-LONG

BY MICHELLE RENEE HIATT

## OVERVIEW

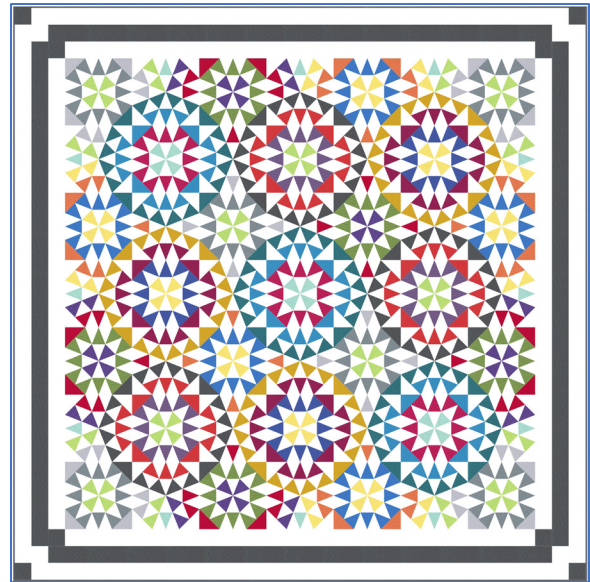
Fireworks Sew-A-Long will take place from **October 2024 – January 2025\***.

**\*No Lessons will be released the last two weeks in December 2024**

Fireworks features the **Studio 180 Design Tucker Trimmer III™ and Wedge Star™**. The series will be a technique-building series offering different techniques, color-building skills, and organizational tips. **Sign-Up: [Teachable.com](https://www.teachable.com)**

- **Empire Border Setting\* – 102" x 102"**
- **Without Empire Border\* Setting – 90" x 90"**

*\*You could add a traditional border onto either of these settings.*



## TOOLS NEEDED

- Tucker Trimmer III™
- Wedge Star™

## SCHEDULE

- Starting in September 2024 running through January 2025. \*No lessons will be released in December 2024.
- 16 Lessons plus Finishing Instructions released weekly\*, on Fridays (before midnight).

## PATTERN & CLASS MEMBERSHIP OVERVIEW

<b>Pattern &amp; Online Class</b>	<ul style="list-style-type: none"><li>• <b>Includes pattern and all 16 Lessons. Downloadable each week when the weekly pattern is released.</b></li><li>• <b>Online/on-demand weekly Video Lessons which will walk through step-by-step weekly techniques and construction.</b></li><li>• <b>Lessons include:</b><ul style="list-style-type: none"><li>○ Fabric Selection and Tool overview</li><li>○ <b>Step-by-step lessons</b> on new units (repeat units will feature a high-level overview)</li><li>○ Block Construction where applicable</li></ul></li><li>• <b>Bonus Tips, plus basic Quilting Tips and Techniques.</b></li><li>• <b>10% Coupon Code for Tools and Notions.</b></li></ul>
<b>Email Notification</b>	<ul style="list-style-type: none"><li>• Available with your agreement to receive “promotion” and “product” emails.</li></ul>
<b>Pattern Access</b>	<ul style="list-style-type: none"><li>• <b>Lifetime*</b> access to the Pattern and Video Lessons.</li><li>• <b>Access weekly pattern and Video Lessons at any time by logging onto your Teachable account.</b></li></ul> <p><i>*Lifetime if you keep your Teachable account that you signed up with.</i></p>
<b>Pattern Downloads</b>	<ul style="list-style-type: none"><li>• You can download and <b>save the weekly patterns to your device</b> (cell phone is not recommended).</li><li>• The Pattern is for your personal use and not to be shared.</li></ul>
<b>Facebook Group</b>	<ul style="list-style-type: none"><li>• Access to a <b>private Fireworks Facebook Group (Group to be created on August 1<sup>st</sup>).</b></li></ul>

## PATTERN & CLASS MEMBERSHIP OVERVIEW

### MEMBERSHIP PRICING

<b>LIVE VIDEO PREMIERE – EARLY BIRD PRICING</b> June 4 <sup>th</sup> – June 10 <sup>th</sup>	<ul style="list-style-type: none"> <li>• <b>LIVE Video Premiere – Early Bird Discount</b> - About \$4.70 a Class Lesson</li> <li>• <b>One-Time Payment of \$75</b></li> </ul>
<b>STANDARD SIGN-UP</b> Starting on June 11th	<ul style="list-style-type: none"> <li>• <b>Standard Price</b> – About \$6.20 a Class Lesson</li> <li>• <b>One-Time Payment of \$99</b></li> </ul>

### ADDITIONAL MEMBERSHIP DETAILS

<b>Platform</b>	<ul style="list-style-type: none"> <li>• <b>Weekly Lessons will be</b> released and stored on Michelle’s school on the <b>Teachable Platform</b>.</li> </ul>
<b>Email Notification</b>	<ul style="list-style-type: none"> <li>• If you agree to “receive instruction emails”, you will receive an email notification.</li> <li>• Save <b>notifications@z.teachablemail.com</b> as <b>safe address/contact</b>.</li> <li>• Otherwise, you can log into your Teachable account each Friday evening and access the current and prior releases.</li> </ul>
<b>Manage Subscription and Access</b>	<ul style="list-style-type: none"> <li>• <b>When you purchase the Membership, you will create an account.</b></li> <li>• You will establish a username and password. You are responsible for remembering your username and password. <b>Note:</b> Michelle does not have access to look up or change this information.</li> <li>• <b>You can log onto the account at any time</b> to update your account information or access the released Downloads/Clues.</li> </ul>
<b>Clue Downloads</b>	<ul style="list-style-type: none"> <li>• Downloads <b>encoded with your Teachable account</b>.</li> </ul>
<b>Sign-Up</b>	<ul style="list-style-type: none"> <li>• <a href="http://michellereneehiatt.teachable.com/p/fireworks-sew-a-long">michellereneehiatt.teachable.com/p/fireworks-sew-a-long</a></li> </ul>
<b>Log-In (Once enrolled)</b>	<ul style="list-style-type: none"> <li>• <a href="https://michellereneehiatt.teachable.com/courses/enrolled">https://michellereneehiatt.teachable.com/courses/enrolled</a></li> </ul>

## FABRIC REQUIREMENTS

	Pattern Color	Moda Sku	Moda Color	Fabric Required
1	Background	#9900-098	White Bleached	7 Yards
2	Light Gray	#9900-316	Smoke	1/3 Yard
3	Medium Gray	#9900-184	Steel	1/2 Yard
4	Dark Gray	#9900-283	Lead	2 Yards* Includes Border
5	Light Yellow	#9900-130	Sunshine	1/2 Yard
6	Medium Gold	#9900-232	Saffron	1/2 Yard
7	Light Green	#9900-163	Amelia Green	1/2 Yard
8	Medium Green	#9900-228	Fresh Grass	1/2 Yard
9	Light Aqua Blue	#9900-034	Aqua	1/3 Yard
10	Medium Aqua Blue	#9900-270	Lagoon	1/2 Yard
11	Medium Turquoise Blue	#9900-226	Bright Turquoise	1/2 Yard
12	Med-Dark Celestial Blue	#9900-448	Azul	1/2 Yard
13	Med-Dark Blue Purple	#9900-116	Dusk	1/3 Yard
14	Med-Dark Purple	#9900-413	Vivid Violet	1/3 Yard

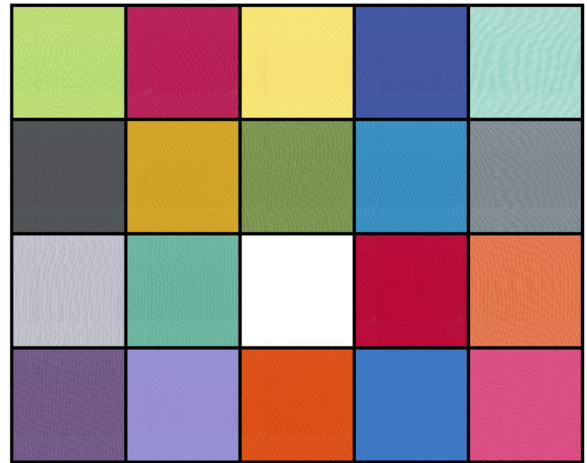
	Pattern Color	Moda Sku	Moda Color	Fabric Required
<b>15</b>	Medium Purple	#9900-139	Aubergine	1/3 Yard
<b>16</b>	Medium Fushia	#9900-386	Pomegranate	1/3 Yard
<b>17</b>	Med-Dark Blue Red	#9900-144	Azalea	1/3 Yard
<b>18</b>	Light Orange	#9900-295	Melon	1/3 Yard
<b>19</b>	Medium Orange	#9900-383	Mandarin	1/2 Yard
<b>20</b>	Med-Dark Orange Red	#9900-382	Ruby	1/2 Yard
<b>Backing</b>				9 ½ Yards

## LIMITED KITS AVAILABLE

If you would like to use the same fabric as Michelle (not required), she has coordinated a kit to be sold independently through [The Yankee Quilter](#). The kits will be directly purchased and managed by The Yankee Quilter.

- **MODA SOLID:** Moda – Michelle has selected this collection of Moda Bella Solids for her quilt. You can get the same fabric in the yardage Michelle specified above. **The Yankee Quilter Kit includes Background and fabric to make the Border and the Binding**

[PURCHASE KIT AT THE YANKEE QUILTER](#)



## THANK YOU!

Follow Michelle at: <https://www.facebook.com/sewonthego.net>

Follow the Yankee Quilter at: <https://www.facebook.com/theyankeequilter>

