

Learn about High and Low Pitches with Body Scale Movements

14 pages, flashcards included

High and Low Pitches

On the piano keyboard, the lower pitches are to the left, and the higher pitches are to the right. If you have a piano or keyboard at home, practice this! There are even piano keyboard apps such as "Grand Piano Keyboard&Metronome" which you can use. See how a note to the left sounds lower than a note played to the right.



ANSWERS High and Low Pitches

Underneath the body scale student, label with the correct solfege syllable: do, re, mi, fa, so, la, ti, or do.



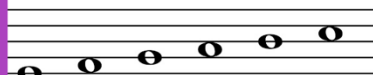
do mi fa ti re la so do mi



la do do fa mi do

arn.MusicinOurHomeschool.com

High and Low Pitches



E F G A B C
Mi Fa So La Ti Do



usicinOurHomeschool.com



mi



mi



mi



mi



do



do

Thank you for purchasing *Learn About High and Low Pitches with Body Scale Movements*.
from Gena Mayo of I Choose Joy Publishing! and Music in Our Homeschool.

Who is Gena?

Gena Mayo is a homeschooling mom of 8 who also taught in public schools for 5 years. She has been teaching music in various forms for the last 25+ years.

Contact Gena at genamayo@att.net
or through her websites [I Choose Joy!](#) or [Music in Our Homeschool](#)
Gena also has an online course site called [Learn.MusicinOurHomeschool](#) .

Terms of Use, Licensing, and Copyright

By downloading and using this product, the purchaser receives an **individual license** for use in only one classroom or homeschool family.

The included license is non-transferable, meaning it cannot be transferred from one teacher to another.

To use in multiple classrooms or within a school district or at a homeschool co-op, or to share among teachers, etc., [please purchase the license here](#).

Or, contact Gena at gena@musicinourhomeschool.com

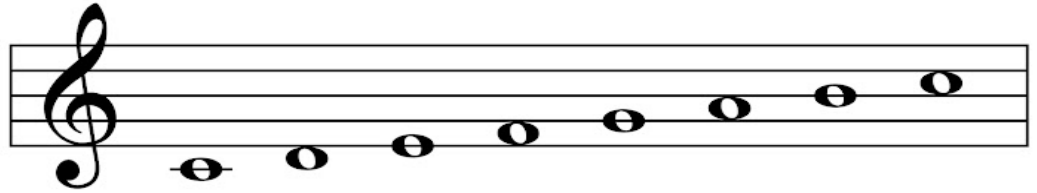
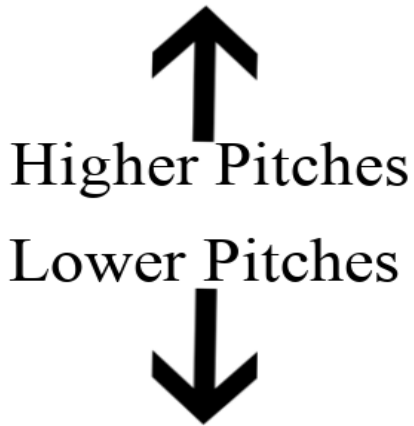
Copyright © 2021

All rights reserved. No portion of this product may be reproduced, stored in a retrieval system, or transmitted outside immediate household in any form or by any means—electronic, mechanical, photocopy, recording, scanning, or other—except for brief quotations in critical reviews or articles, without the prior written permission of the publisher.

No part of this resource may be uploaded to the internet in any form, including classroom or personal websites or network drives unless the site is password protected and can only be accessed by students and their parents.

High and Low Pitches

On the music staff, the lower pitches are lower on the staff, and the higher pitches are higher.

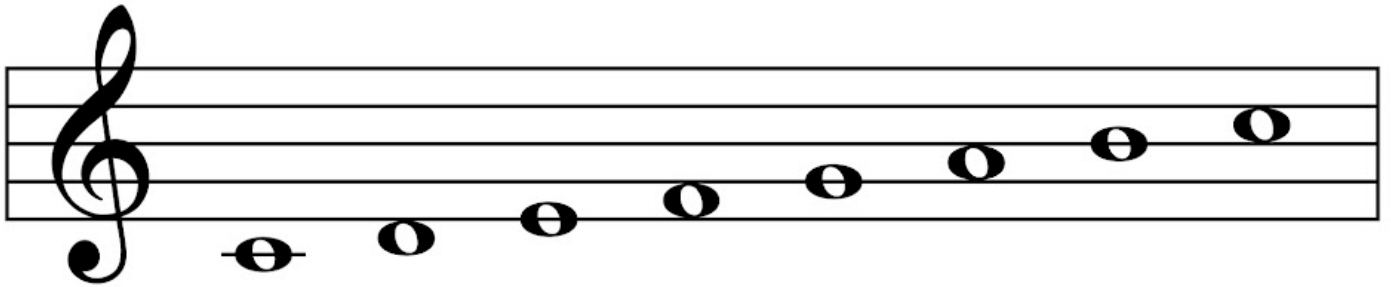


C D E F G A B C

Do Re Mi Fa So La Ti Do

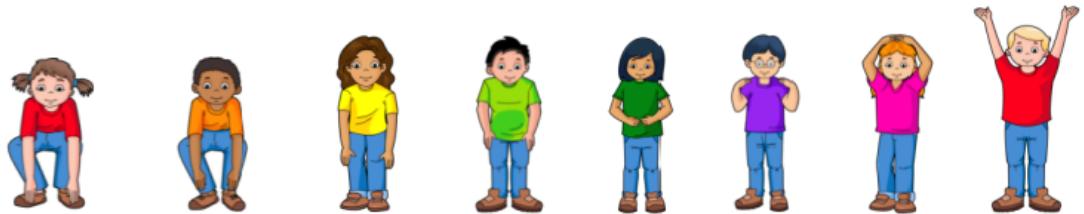


High and Low Pitches



C D E F G A B C

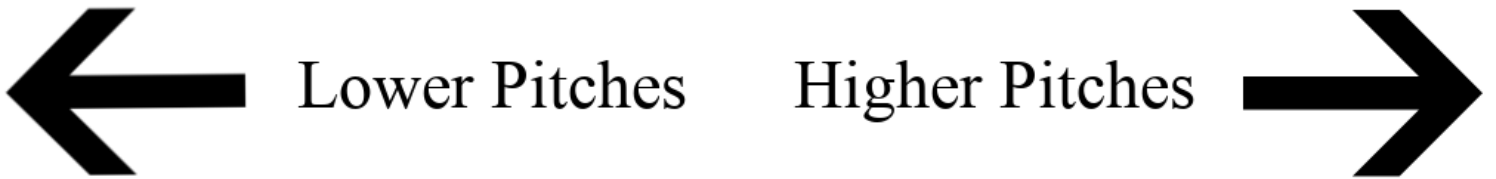
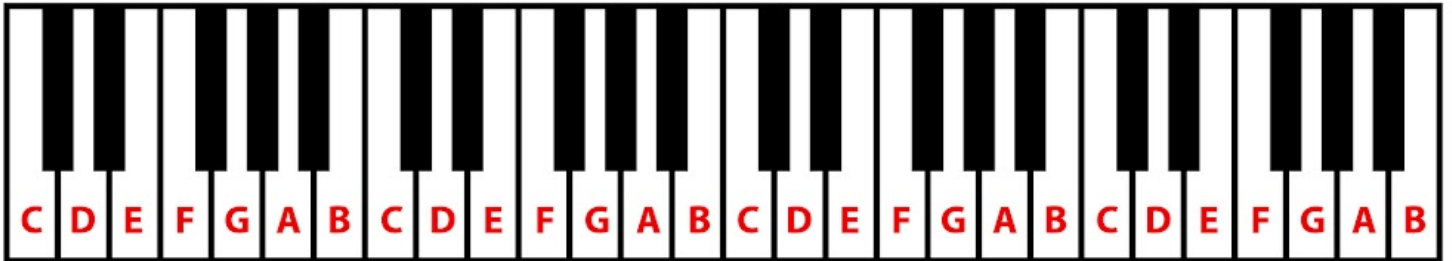
Do Re Mi Fa So La Ti Do



Learn.MusicinOurHomeschool.com

High and Low Pitches

On the piano keyboard, the lower pitches are to the left, and the higher pitches are to the right. If you have a piano or keyboard at home, practice this! There are even piano keyboard apps such as "Grand Piano Keyboard&Metronome" which you can use. See how a note to the left sounds lower than a note played to the right.



Learn.MusicinOurHomeschool.com

High and Low Pitches

Underneath the body scale student, label with the correct solfege syllable: do, re, mi, fa, so, la, ti, or do.



ANSWERS

High and Low Pitches

Underneath the body scale student, label with the correct solfege syllable: do, re, mi, fa, so, la, ti, or do.



do



mi



fa



ti



re



la



so



do



mi



so



ti



re



la



do



do



fa



mi



do

How to use the flashcards on the next pages:

1. Cut each page into 4 flashcards.
2. Laminate if you wish.
3. Practice singing a scale “do re mi fa so la ti do” in any key.
4. Hold up a card and have the kids do the motion and sing the note.
5. After doing that for a while, have the kids compose their own songs by laying out the cards in any manner they wish. Then, have them sing their compositions!

Tips:

1. Use a piano to check to see if they sang the notes correctly.
2. Start with just do, mi, and so at the beginning. Then, add high do. Next, just use do, re, mi, fa, and so. Later, after they’re getting increasingly successful with those, you can use all the cards.
3. Also, start with the key of C, but then you can do this in other keys as well. Just make sure you sing the scale in the new key so the kids know what it sounds like!



do



do



do



do



re



re



re



re



mi



mi



mi



mi



fa



fa



fa



fa



SO



SO



SO



SO



la



la



la



la



ti



ti



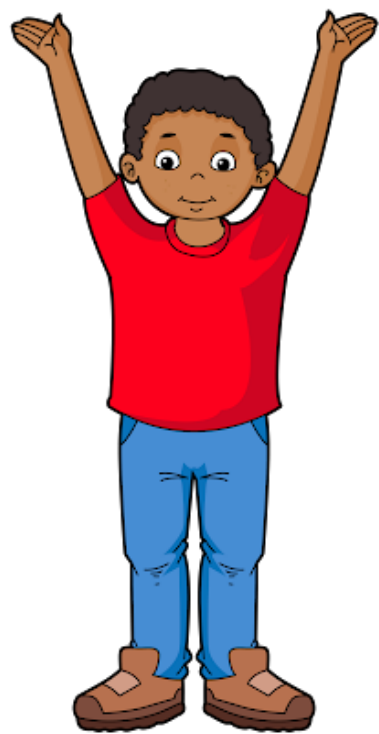
ti



ti



do



do



do



do