


# Practice Exercises for the Highland Bagpipe

♩ = 60

Lower hand scale

lowG    A    B    C#    D    C#    B    A    lowG



Lower hand Exercise 1



Lower hand Exercise 2



Lower hand Exercise 3



Lower hand Exercise 4



Lower hand Exercise 5



Top hand scale

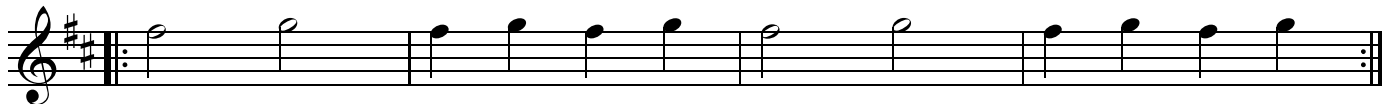
E    F#    HiG    HiA    HiG    F#    E



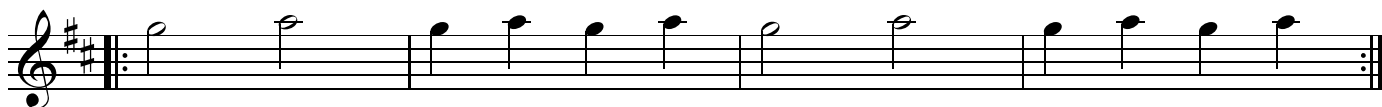
2 Top hand Exercise 1



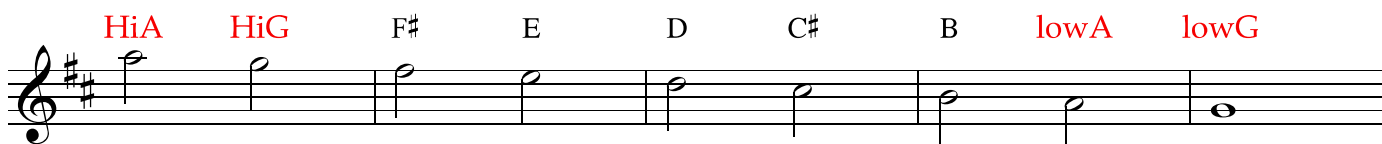
Top hand Exercise 2



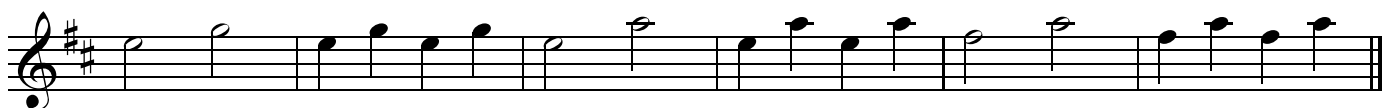
Top hand Exercise 3



Full scale



Top hand Crossings



Top hand using crossings



Lower hand Crossings from low G



Lower hand Crossings from low A







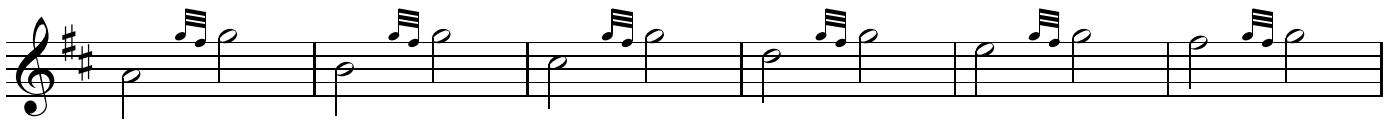
D throw scale



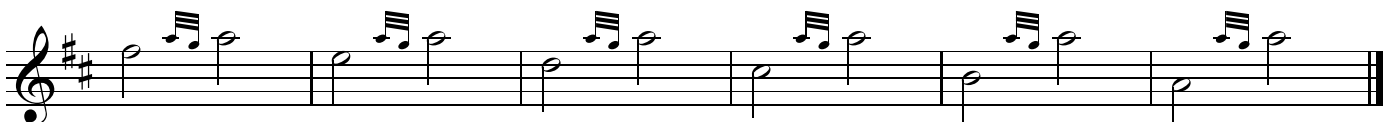
D strike scale



Hi G doubling scale



Hi A doubling scale



6 E doubling scale



F doubling scale



E gracenote scale



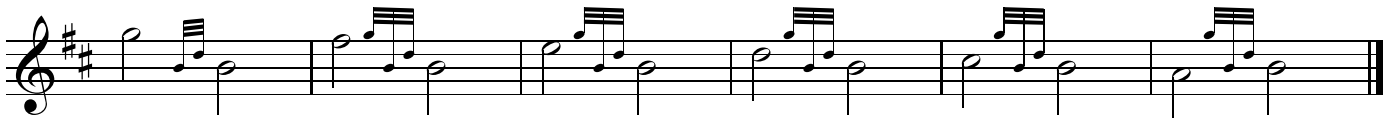
D gracenote scale



C doubling scale



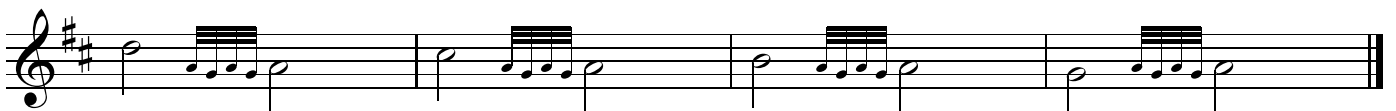
B doubling scale



D doubling scale



Birl scale (no gracenote)



8 Birl scale (with gracenote)

The Birl scale (with gracenote) is presented in three staves of music. The key signature is G major (one sharp) and the time signature is 2/4. The first staff contains five measures of music, each starting with a half-note G and followed by a sixteenth-note triplet of A, B, and C. The second staff also contains five measures, each starting with a half-note G and followed by a sixteenth-note triplet of A, B, and C. The third staff contains five measures, each starting with a half-note G and followed by a sixteenth-note triplet of A, B, and C. The piece concludes with a double bar line and a 3/4 time signature.

Grip scale

The Grip scale is presented in two staves of music. The key signature is G major (one sharp) and the time signature is 3/4. The first staff contains eight measures of music, each starting with a half-note G and followed by a quarter-note triplet of A, B, and C. The second staff contains eight measures of music, each starting with a half-note G and followed by a quarter-note triplet of A, B, and C. The piece concludes with a double bar line.

Toraluath scale

The Toraluath scale is presented in three staves of music. The key signature is G major (one sharp) and the time signature is 2/4. The first staff contains eight measures of music, each starting with a half-note G and followed by a quarter-note triplet of A, B, and C. The second staff contains eight measures of music, each starting with a half-note G and followed by a quarter-note triplet of A, B, and C. The third staff contains eight measures of music, each starting with a half-note G and followed by a quarter-note triplet of A, B, and C. The piece concludes with a double bar line.