

Guide to Techniques

All the flower pot boxes in this course are made with Peyote stitch.

You will use circular Peyote to make a flat base; then tubular Peyote to build up the sides of your box. Finally, we add a little 'lip' to strengthen the top of the box.

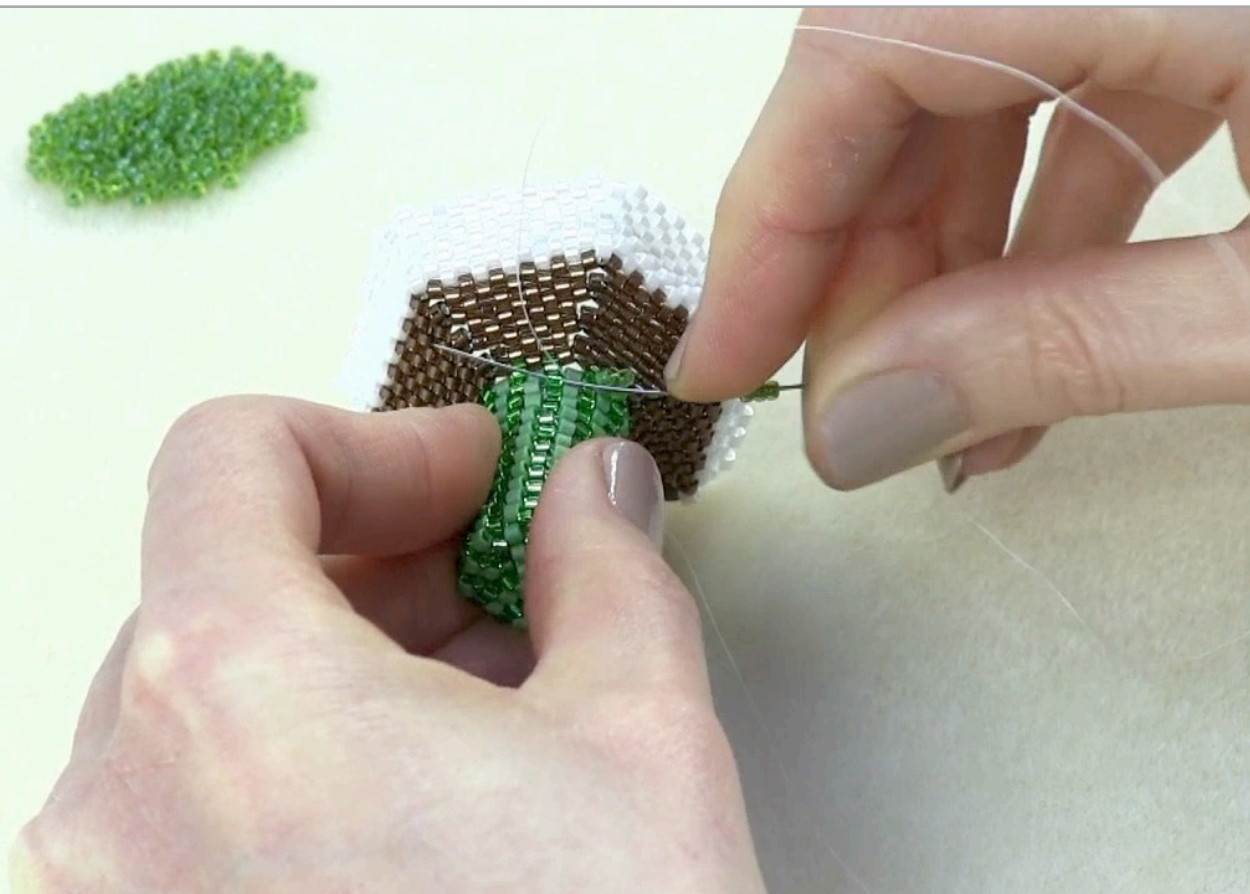
You will use the same set of techniques to make the box lids. I have assumed that you already have some knowledge of the following techniques:

- Circular Peyote
- Tubular Peyote
- Peyote Decrease
- Peyote Increase
- 'Stitch in the Ditch' (see video: *Stitch in the Ditch*)

If you have never worked in Peyote stitch before, then I recommend you learn the basics before trying these boxes. You can find my free tutorials at www.beadflowers.co.uk.

I have added flowers and plants using a variety of basic bead-weaving techniques, all of which I explain in the project instructions. Some of these are 'structured freeform' based around the 'Stitch in the Ditch' technique. Some use odd count, even count, two-drop and diamond Peyote. You will also need some basic brick stitch.

Make sure you read through the project instructions before you begin any project. That way, you can assess whether you will need to refresh yourself on any techniques before you begin your chosen flower pot.



*See the *Stitch in the Ditch* video*

Tools and Materials

Tools

You simply need:

- beading needle
- scissors or thread cutters.
- whatever beading mat or board you find comfortable.

I recommend a size 10 beading needle. You probably already have your favourite pair of scissors. For me, it is embroidery scissors, but 'snips' or thread

burners also work well. You just need to make sure that you are able to trim thread as close to the beads as possible.

Health Alert

Plus, remember your health! A daylight lamp is great if you are beading in a room that doesn't have good light. Take regular breaks. These boxes can get pretty addictive. So, don't forget to get up and walk around from time to time to give your body and eyes a rest.



Tools: beading mat, beading needle, scissors and/or thread cutters

TOOLS AND MATERIALS

Materials

Beads for the Boxes/Pots

I strongly recommend that you use size 10/0 Delicas for these flower pot boxes. This may be an unfamiliar size if you are used to the slightly smaller size 11/0. So, let me explain why I suggest using them.

The techniques for the boxes require very regular shaped beads, ie Delica (cylinder) beads. The techniques for the box lips are a little fiddly. The slightly bigger size 10/0 allows a little more space to get your needle into the beads in tight spots. This reduces the chance of breaking beads or needles as you work. Size 11/0 beads will make life more difficult.

If you prefer to use 11/0s the boxes will still work, but they will come out significantly smaller. So, the scale of plant to box just will not work in some of the projects. I have used beads and techniques for making the flowers to scale with size 10/0 boxes.

So, trust me here, if you haven't already fallen in love with 10/0 Delicas, you will do after trying them!

Beading Thread

Choose a beading thread that gives you good tension. Personally, I find fireline works well for me. I use 4lb weight as this is strong, but still fine enough to make

multiple passes through beads where necessary. If you have been beading for a while, please feel free to use your favourite beading thread. Just make sure it gives you a firm tension.

Whatever beading thread you choose, try to match or tone the thread with your bead colours.

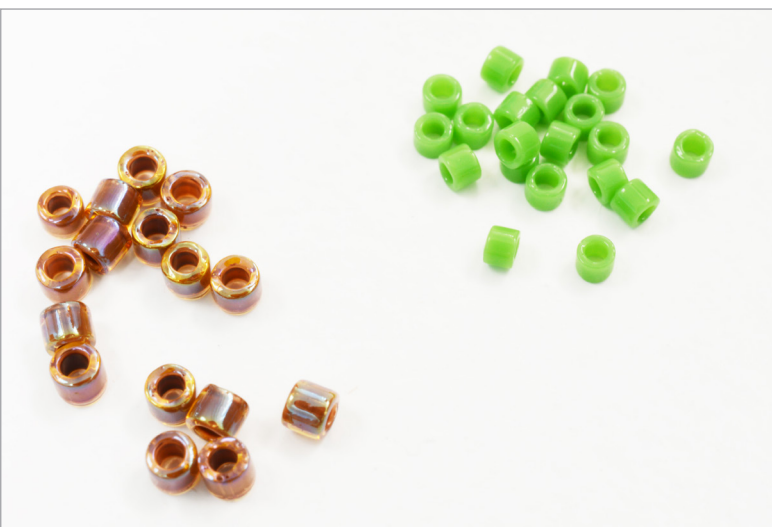
Beads for the Flowers/Plants

I have used a range of beads for the plants and flowers. So, depending on which flower pots you make, you will be using any or all of the following beads:

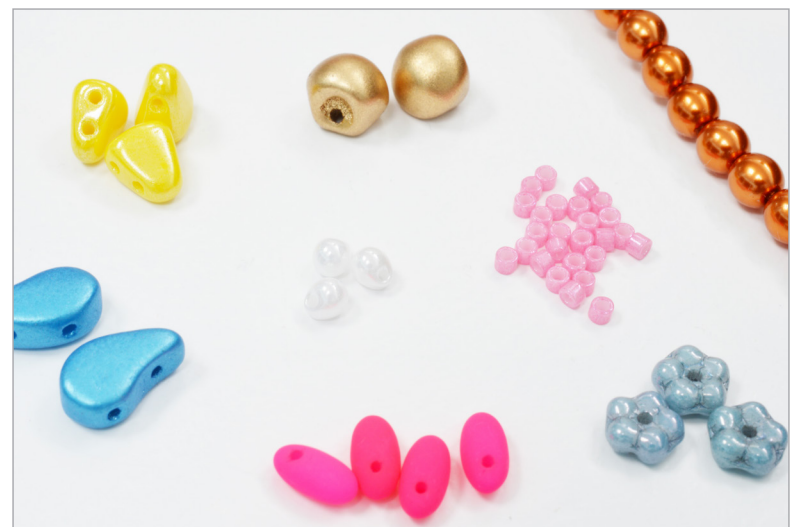
- Size 11/0 Delicas
- 4mm pearls (or substitute with crystals)
- Forget-me-not flower beads
- Nib-Bits
- Paisley Duos
- Mini Mushrooms
- 2.8mm Miyuki Drops
- Rizo Beads

Where to Buy Materials

You probably already have your favourite beading stores. So, check whether they sell these beads. You may find you need to shop around and get different beads from different places.



10/0 brown Delicas are a little bigger than 11/0 green



The flowers and plants use a range of shaped seed beads

Design Ideas

Designing Flowers

I encourage you to use this course as a learning tool to help you move on and experiment with your own designs. I have tried to create flower and plant designs that look cute, but also teach you a good range of skills. So, you will learn how to make flowers using basic bead-weaving techniques, and how to make simple flowers just by stringing shaped seed beads.

Some of the patterns are very structured, teaching you how to create a specific shape or style of plant. I have used more freeform, artistic ideas for other projects. So, if you make each type of flower or plant from this ebook, you will learn a range of skills that you can use to create your own designs.

You may also have existing patterns for bead-woven flowers that you can use. If you want to scale a design down, make it with smaller beads. If this is not

possible, then make your flower or plant first and simply scale up your pot to suit it.

If you are looking for more flower patterns, then I can offer you two from my website as a starting point: [Peyote Stitch Daffodil](#) and [Superduo Flower](#).

Designing Pots

Similarly, the different flower pots for the projects will teach you how to scale your basic shapes up and down in size. I also teach you a few different patterns that you can use to decorate your pots.

I invite you to try designing your own patterns for the flower pots. You can think of each pot as a series of four (square) or six (hexagon) sides. You might want to create a pattern that repeats on each side.



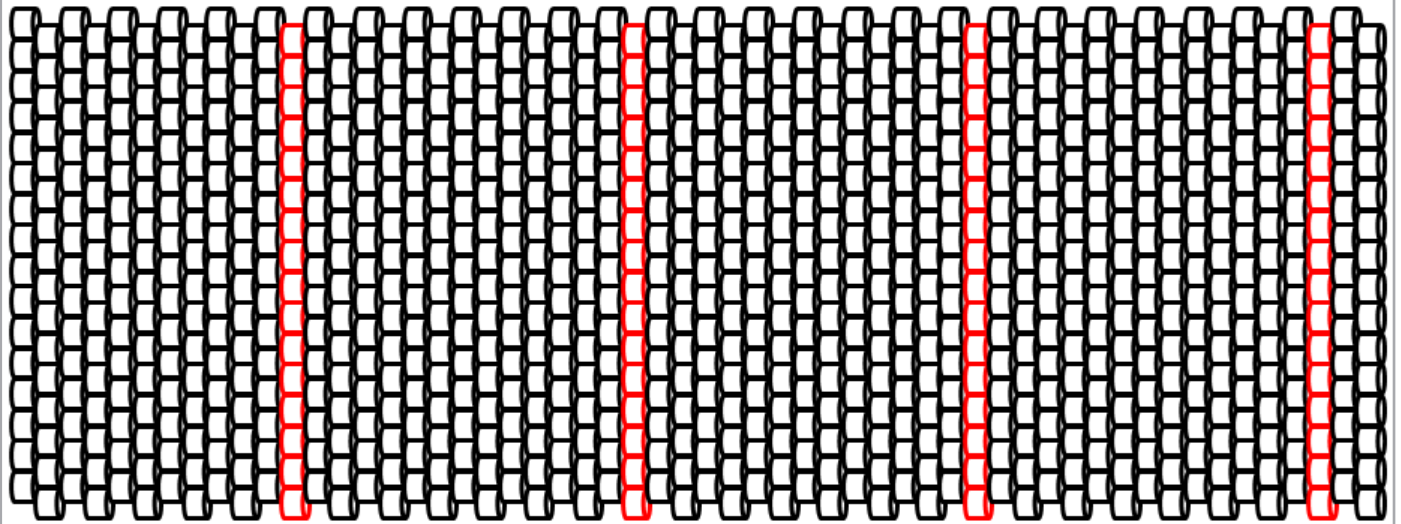
My flower pots make a wonderful display on my window sill

DESIGN IDEAS

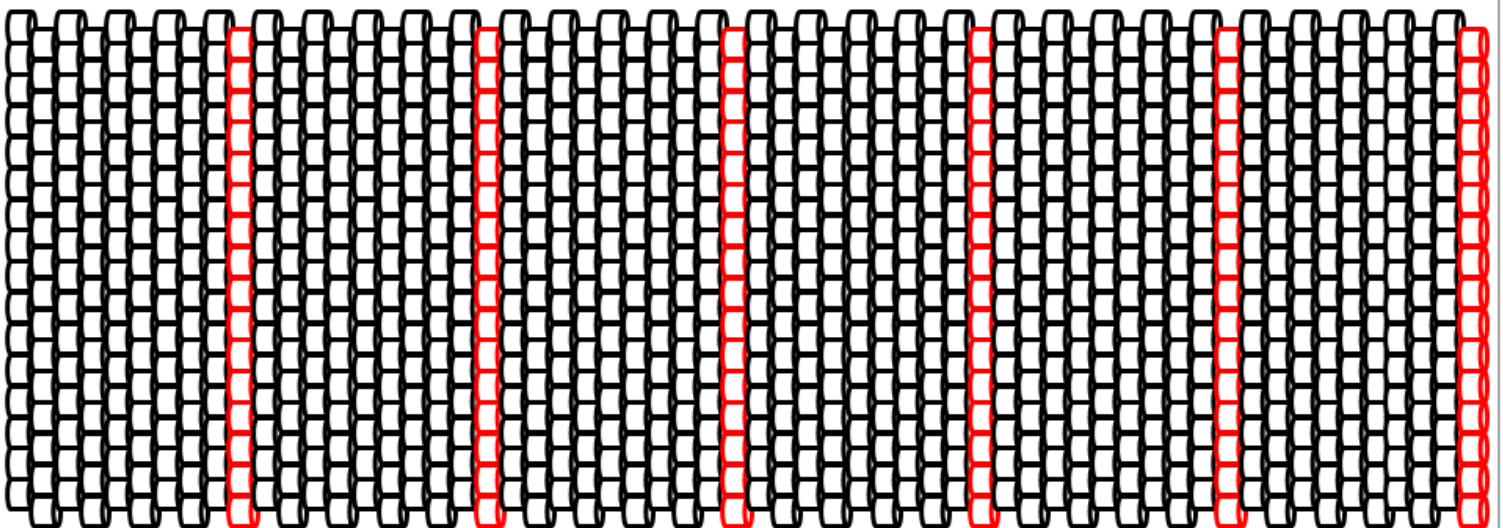
Alternatively, you may want a pattern that flows right the way around the pot.

Use the blank patterns on this page to create your designs. Print out the page. Decide which kind of design you wish to create, then just colour in the

beads on the appropriate pattern. I have used a red outline for the beads that will form your corner line. Remember that this pattern is a 'flattened-out' tube. So, the right and left edges will meet when you are beading. If your design wraps around, be sure to check that it will meet correctly on the edges.



Square pot blank pattern



Hexagon pot blank pattern

DESIGN IDEAS

Colouring

I have chosen not to give you the specific bead colours that I used for each project. Let me explain why.

I want this course to help you build your confidence in making colour and design choices. So, you can take your beaded box flower pots beyond the pages of this course and create something of your own.

I have tried to use as many different colour schemes and combinations as possible. I hope these will give you inspiration. You might like the style and shape of a particular pot and flower, but prefer the colouring from a different project. So, go with that.

When you are choosing your colour schemes, here are a few questions that you can use to guide yourself.

- Does the project use a type of bead that has a limited choice of colours? If so, then choose the colour of this bead first and build the rest of the project around it.
- Do you want the colour of your pot to match the colour of your flower, or to contrast with it? If you choose to contrast, then think about whether you want the flower or the pot to appear more prominent.
- Are you making the project to sit in a particular room in your house, or to give to a particular person? If so, then choose colouring that will suit that room or that person.
- Do you want a bold colour scheme? Then, go for strongly contrasting colours. If you want a more subtle or muted scheme, try using different shades of the same colour.



The patterns for the Peyote Stitch Daffodil and the Superduo Flower are on my website



Two examples of bold colour schemes with strongly contrasting colours