

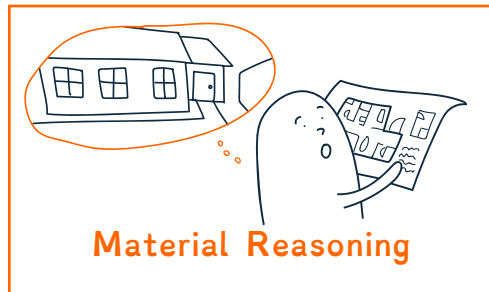
Intro Module: Class B.1

Hook Worksheet MIND Review

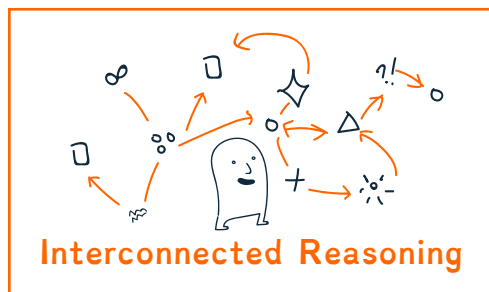
Name: _____

Date: _____

Draw a line from the MIND strength to the best example of it.



- A. You notice people who are unemployed but own a car, and other people who need a ride and have cell phones. You connect these two ideas to create a business where people use their cellphones to request rides from others.



- B. You are assigned the role in a school play of a character who experiences a loss. You then remember a time earlier in your own life when you lost a pet. You draw on the experience of that loss to help you play your character with convincing emotion.



- C. While looking at only the blueprint of a house, you are able to walk through the fully built house in your mind.

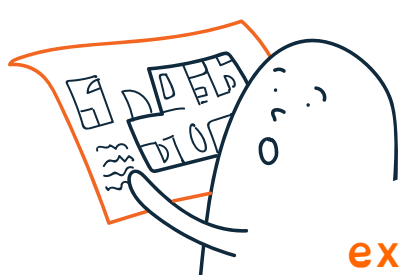


- D. Look up at a ravine running between two mountains and think how the ravine is a byproduct of erosion from centuries of streaming water. Next, predict what will happen to the ravine over the next millennium. Will it deepen? Will its structure crumble? You can guess the future based on the past.

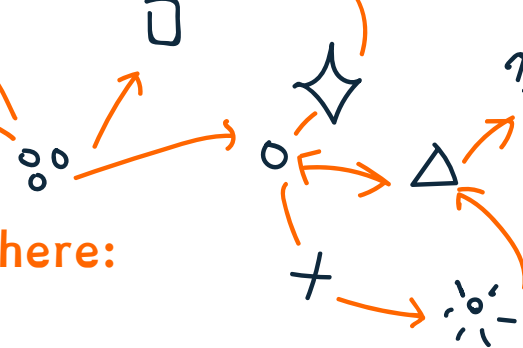


Welcome to NoticeAbility





Write or draw your own example of a **MIND** strength here:



Welcome to NoticeAbility

