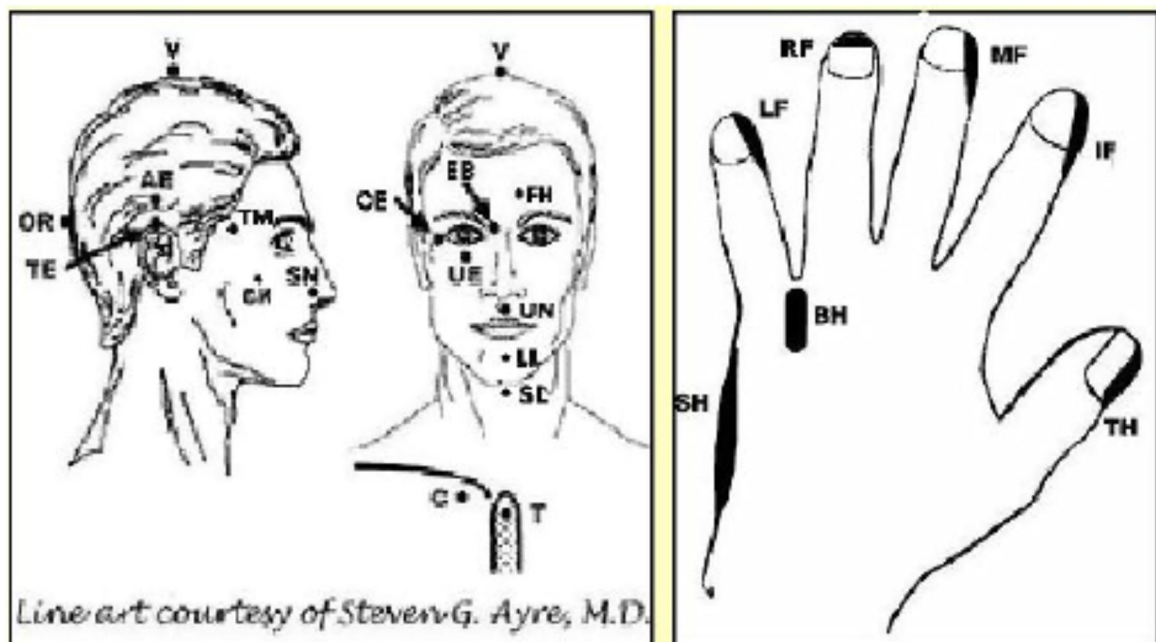


Attractor Field Technique Meridian Locations



<u>Tapping Location</u>	<u># Taps</u>	<u>Tapping Location</u>	<u># Taps</u>
AE = Above either Ear (TE point) on skull	60	OR = Occipital Ridge (bump) lower back of skull	60
BH = Back of either Hand between 3rd and Little finger	225	RF = Tip of either Ring Finger	60
C = Chest soft spot below collar bone 1½ - 2" from center of Rib cage	60	SH = Side of either Hand from edge of palm to include little finger center knuckle	60
CK = Cheek bone below corner of either eye	60	SL = Side of Larynx (Adam's apple)	60
DT = Double Tap (simultaneous AE-TE points using two fingers)	60	SN = Side of Nose at cheek where top of nostril begins to flare outward.	60
EB = End of either Eyebrow by Nose	60	T = Thymus at top center of Rib cage	60
FH = Forehead 1½" above EB point	60	TE = Top of Ear on top outside edge (not skull)	60
IF = Index Finger inside edge of nail	60	TH = Thumb on inside edge of nail	60
LF = Little Finger inside edge of nail	60	TM = Temple soft spot by hairline	60
LL = Under Lower Lip on center cleft	15	UE = Under center of Eye on bone	60
MF = Middle Finger inside edge of nail	60	UN = Under Nose on center of lip	15
OE = Outside corner of either eye	60	V = Vertex (crown) centered on head	60