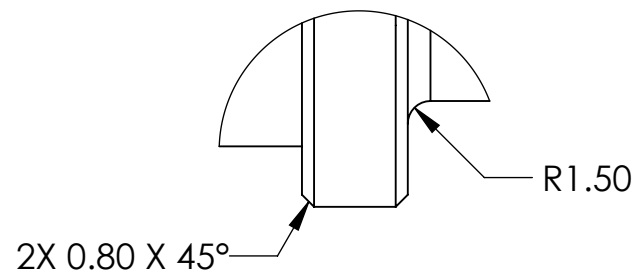
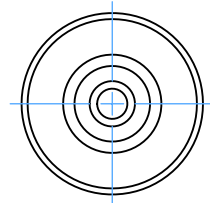
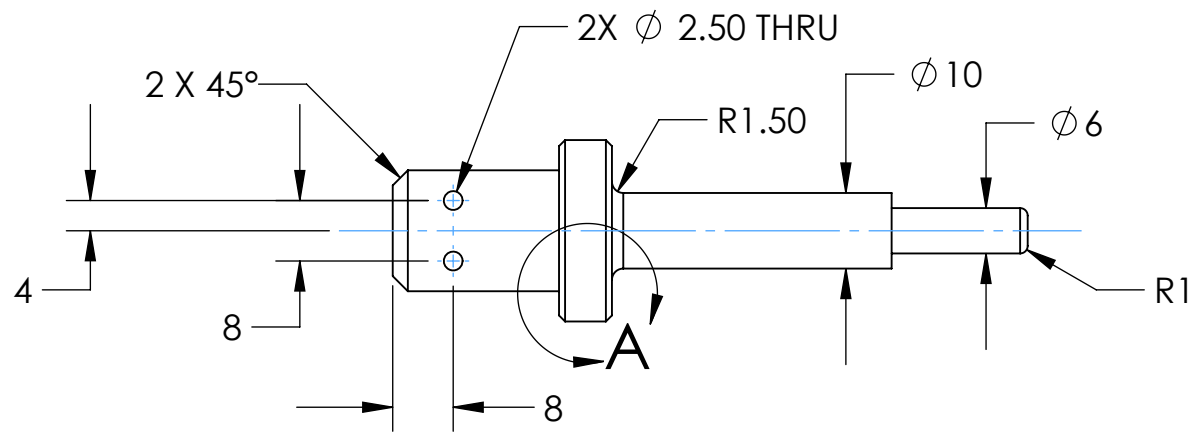
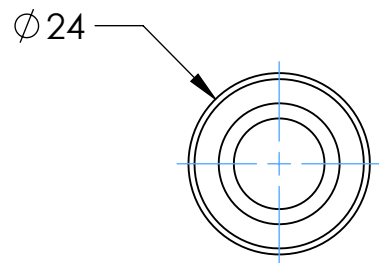
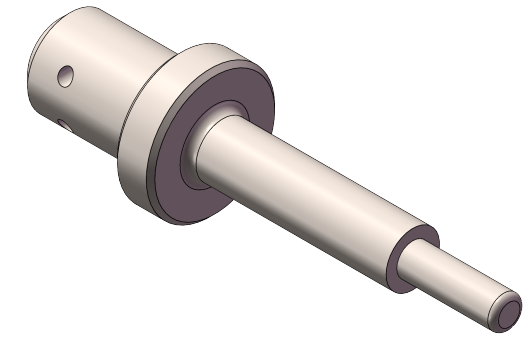
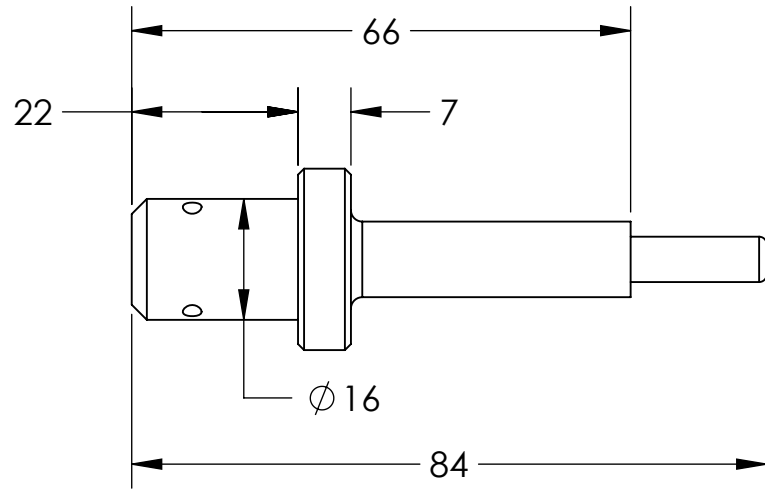
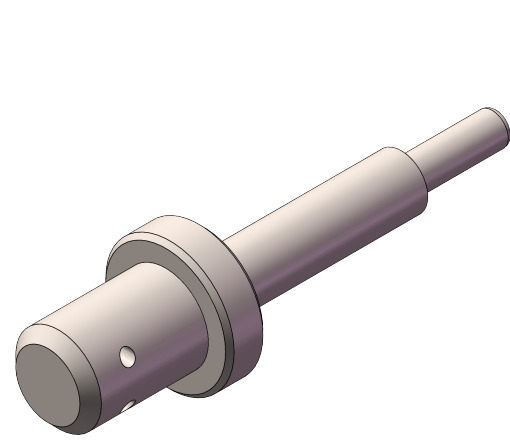


Model File Name: ATP-1002

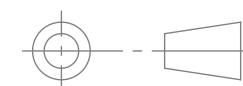



DETAIL A  
SCALE 2 : 1

- NOTES:
1. DRAWING TO BE INTERPRETED IN ACCORDANCE WITH ASME Y14.5-2018
  2. MATERIAL: AISI TYPE 316L STAINLESS STEEL
  3. DENSITY: 8,027 kg/m<sup>3</sup>
  4. VOLUME: 10742.90 CUBIC MILLIMETERS
  5. MASS: 86.23 GRAMS

DIMENSIONS IN MM

THIRD ANGLE PROJECTION



 <b>Agile Academy</b> agile-academy.tech					
SHAFT 05 SAMPLE PARTS					
DO NOT SCALE PRINT TOLERANCES UNLESS OTHERWISE SPECIFIED .XX ± .05 .XXX ± .020 ANGLE ± 1° SIZE <b>B</b>	<table border="1"> <tr> <td>DRAWN BY JEV</td> <td>DRAWING NO. <b>ATP-1002</b></td> </tr> <tr> <td>CHECKED BY JLM</td> <td>SCALE: 1:1    DATE 1/23/2025    SHEET 1 OF 1</td> </tr> </table>	DRAWN BY JEV	DRAWING NO. <b>ATP-1002</b>	CHECKED BY JLM	SCALE: 1:1    DATE 1/23/2025    SHEET 1 OF 1
DRAWN BY JEV	DRAWING NO. <b>ATP-1002</b>				
CHECKED BY JLM	SCALE: 1:1    DATE 1/23/2025    SHEET 1 OF 1				