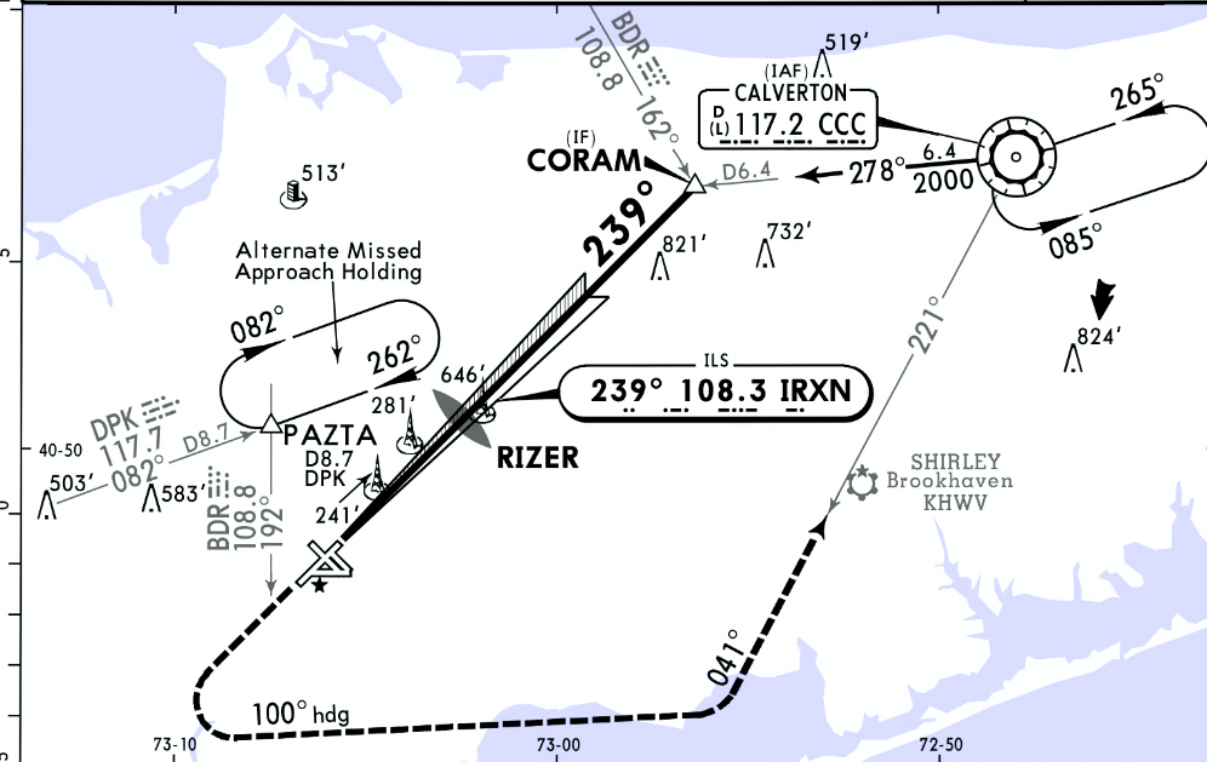
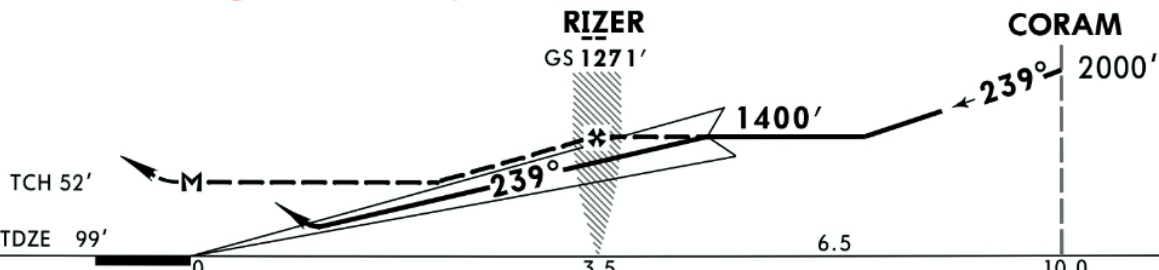


ATIS 120.725		NEW YORK Approach (R) 120.05		*LONG ISLAND Tower CTAF 119.3		*Ground 135.3		
LOC IRXN 108.3	Final Apch Crs 239°	GS RIZER 1271' (1172')	ILS DA(H) 299' (200')	Apt Elev 99' TDZE 99'				
MISSED APCH: Climb to 2000' then LEFT turn on heading 100° and inbound on CCC VOR R-221 to CCC VOR and hold.								
Alt Set: INCHES		Trans level: FL 180		Trans alt: 18000'				
1. Autopilot coupled approach not authorized below 800'. 2. NOPT for arrival on CCC VOR airway R-057 and R-105. 3. Pilot controlled lighting 119.3.								



Not for Navigational Purposes



Gnd speed-Kts	70	90	100	120	140	160	MALSR	2000'	LT	via 100° hdg	and	CCC R-221	CCC 117.2
GS	3.00°	372	478	531	637	849	VASI	↑					
RIZER to MAP	3.5	3:00	2:20	2:06	1:45	1:30							

TERPS					STRAIGHT-IN LANDING RWY 24		CIRCLE-TO-LAND		
ILS			LOC (GS out)				Max Kts MDA(H)		
DA(H) 299' (200')			MDA(H) 520' (421')						
FULL			CL out		RAIL/ALS out		RAIL/ALS out		
A					RVR 24 or 1/2		RVR 55 or 1		
B					RVR 40 or 3/4		RVR 60 or 1 1/4		
C	RVR 18 or 1/2	RVR 24 or 1/2	RVR 40 or 3/4				90 600'(501') -1		
D							120 660'(561') -1		
								140 660'(561') -1 1/2	
								165 960'(861') -2 3/4	

TERPS AMEND 4D 10 OCT 2019