

Tones of Mandarin

1st 2nd 3rd 4th

Neutral Tone



Pinyin

mā

Zhuyin

ㄇ ㄚ

Traditional /Simplified
character

媽 (妈)

English

mother





Pinyin

má

Zhuyin

ㄇㄚˊ

Traditional /Simplified
character

麻

English

hemp



Pinyin

mǎ

Zhuyin

ㄇㄚˇ

Traditional /Simplified
character

馬 (马)

English

horse



Pinyin

mā

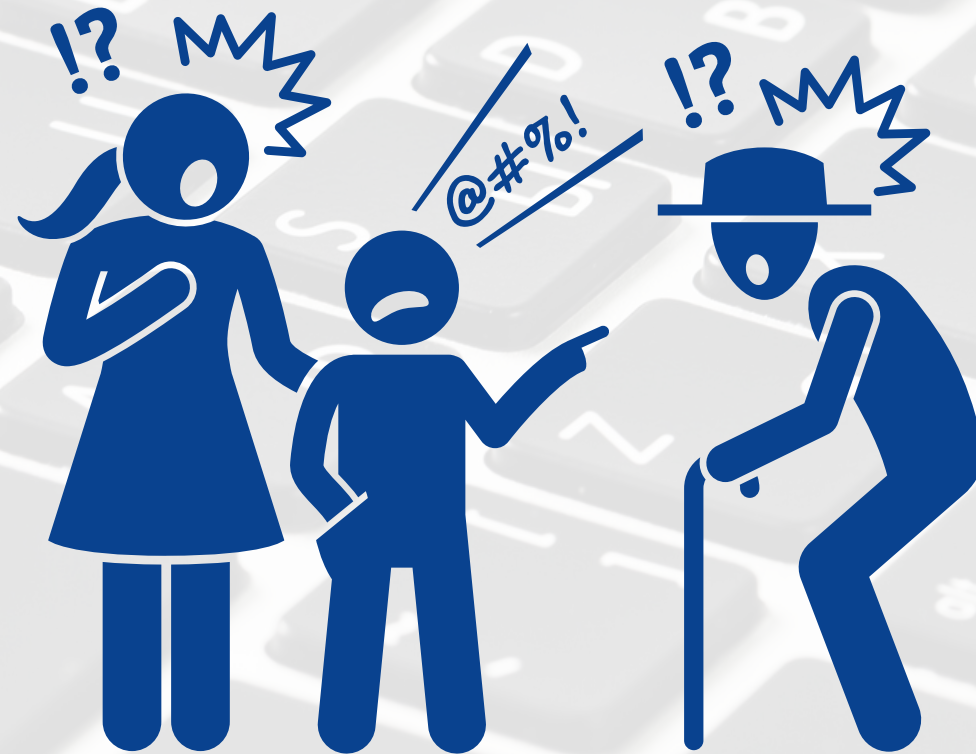
mǎ



Zhuyin

ㄇ

ㄚˇ



Traditional /Simplified character

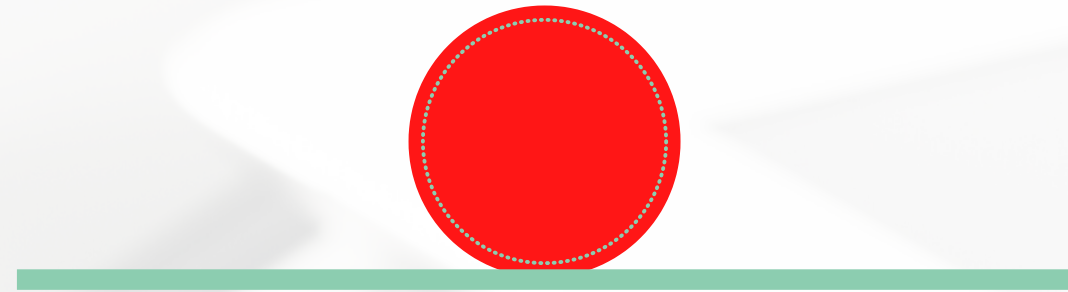
罵

(骂)

English

to scold

Pinyin



mā

Zhuyin



Traditional /Simplified
character

嗎 (吗)

English

Yes/No Question Word

