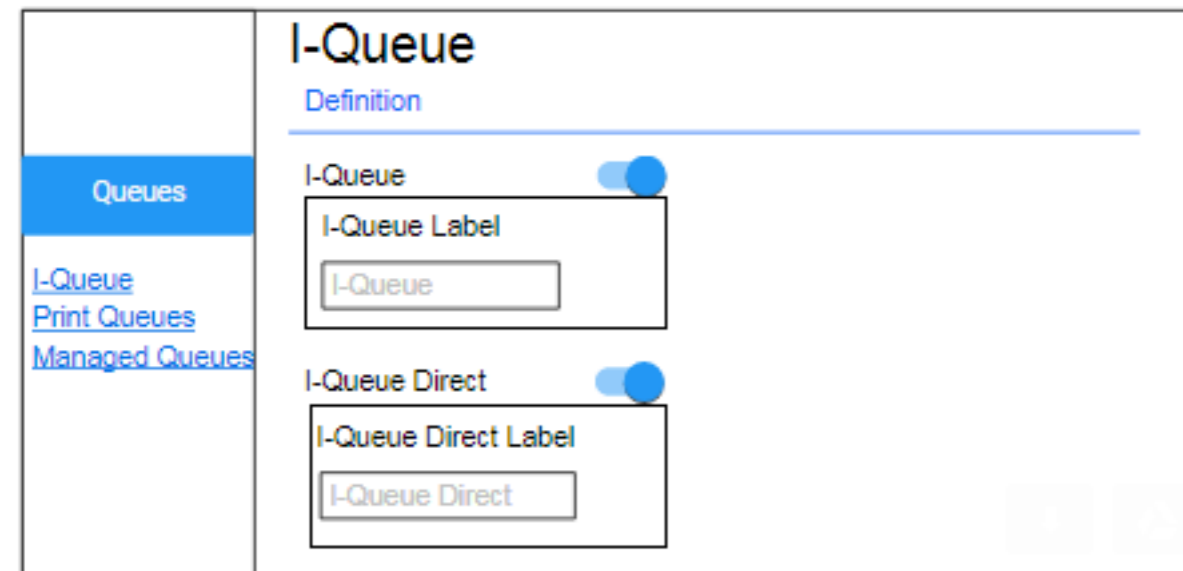


1. In some cases we were looking for the ideal pattern for presenting toggle switches that would further drive (hide/show) other controls. Here are screen shots of some ideas we came up with. In the following example, we have two toggle switches, "I-Queue" and "I-Queue Direct". If any of these are enabled then admin would further need to set corresponding queue labels. Please note the following is just a mockup.

**A** **PREFERRED** 



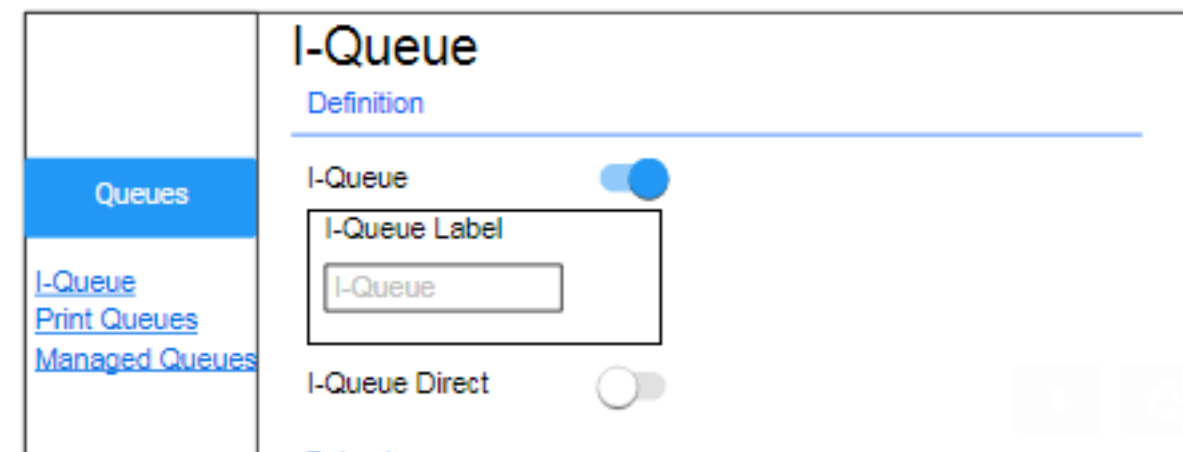
**I-Queue**  
Definition

Queues

I-Queue  I-Queue Label

I-Queue Direct  I-Queue Direct Label

[I-Queue](#)  
[Print Queues](#)  
[Managed Queues](#)



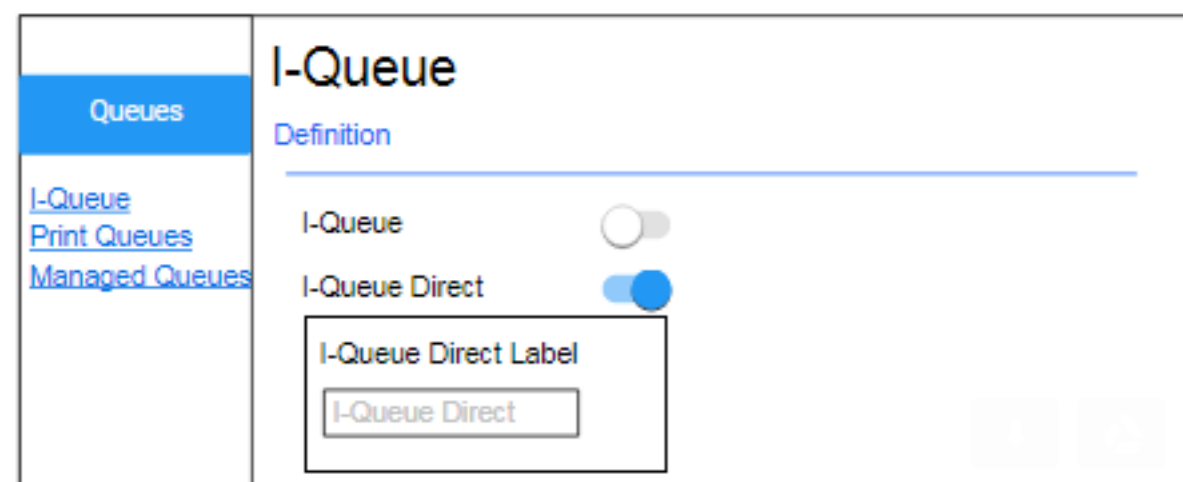
**I-Queue**  
Definition

Queues

I-Queue  I-Queue Label

I-Queue Direct

[I-Queue](#)  
[Print Queues](#)  
[Managed Queues](#)



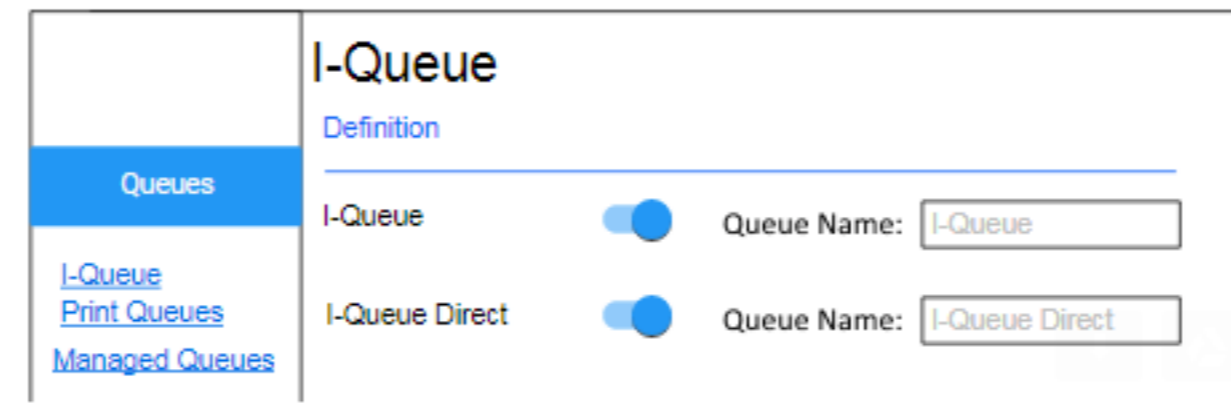
**I-Queue**  
Definition

Queues

I-Queue  I-Queue Direct  I-Queue Direct Label

[I-Queue](#)  
[Print Queues](#)  
[Managed Queues](#)

**B**



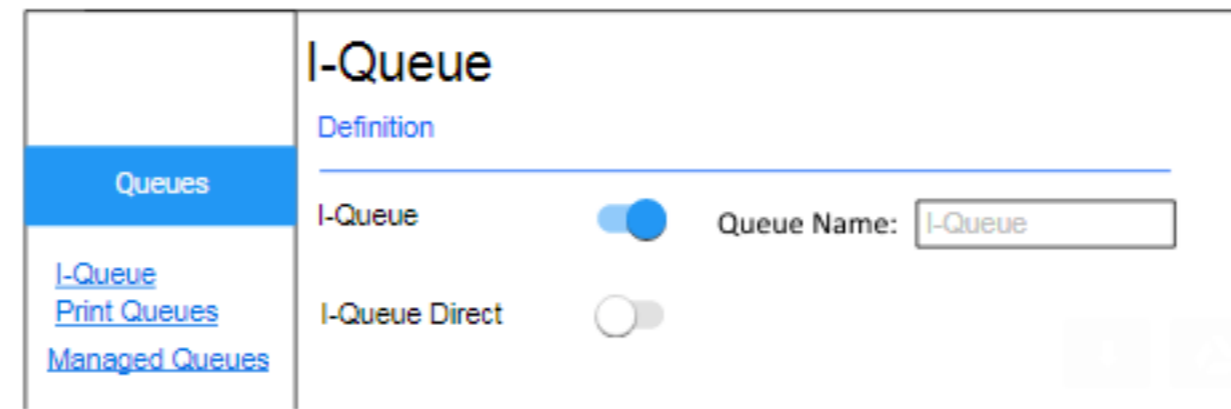
**I-Queue**  
Definition

Queues

I-Queue  Queue Name:

I-Queue Direct  Queue Name:

[I-Queue](#)  
[Print Queues](#)  
[Managed Queues](#)



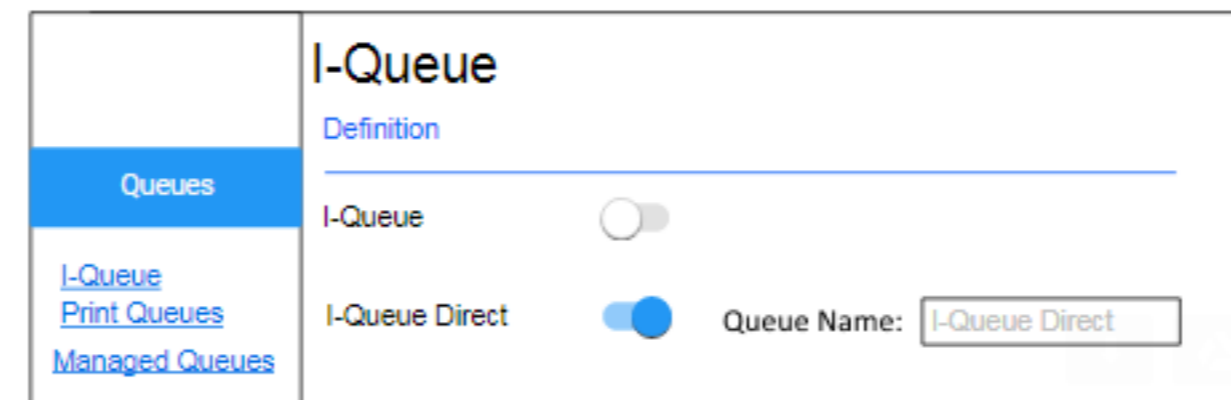
**I-Queue**  
Definition

Queues

I-Queue  Queue Name:

I-Queue Direct

[I-Queue](#)  
[Print Queues](#)  
[Managed Queues](#)



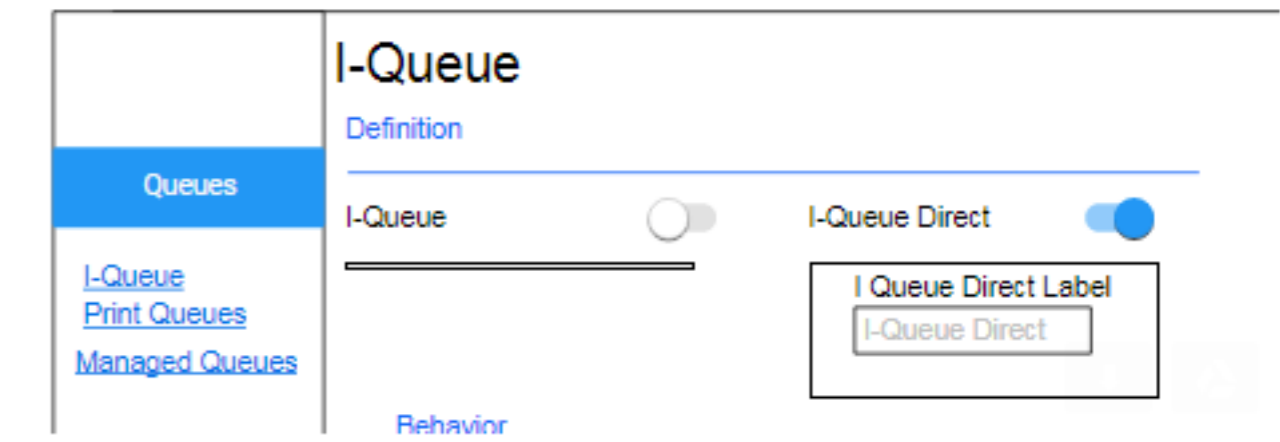
**I-Queue**  
Definition

Queues

I-Queue  I-Queue Direct  Queue Name:

[I-Queue](#)  
[Print Queues](#)  
[Managed Queues](#)

**C**



**I-Queue**  
Definition

Queues

I-Queue  I-Queue Direct  I-Queue Direct Label

[I-Queue](#)  
[Print Queues](#)  
[Managed Queues](#)

Behavior

Vertical layout easier to read. Easier for user to associate dependent field (compared to horizontal layout options).

Make sure spacing is such that grouping (field dependency/ association) is really apparent

- About secondary navigation pages, these have both a cancel and a back button. Based on the pattern guide. We display a confirmation modal window when user clicks on back button, we don't display a confirmation message when user clicks on cancel button. Save button would commit changes and navigates user back to landing page. Can you please further explain the reason behind this pattern.

Note: this is not a secondary nav page  
It's a page form.

## Form Save Model

- Saving Form Data** - forms pertaining to object settings can be rendered in the context of a full page display.
- Sidebar Navigation** - settings can be categorized into sections that are accessed via the sidebar navigation (settings sectional navigation is optional). The user can navigate between the object's setting sections in the sidebar navigation without being forced to save the settings.
- Save Button** - the Save button applies to the entire object settings. For object settings that are separated into navigation sections, all the object's associated setting sections are saved when the user selects Save (not just the section that's currently in view/selected).

If the user is editing a form, the Save button is initially in a disabled state until the user updates any of the existing form data; the Save button then becomes enabled.

Selecting Save saves to the updated form data to the system and returns the user to the page where the form was launched from.

- Cancel Button** - cancels the edit session and returns the user to the page where they initiated the edit.
- Back Button** - If the user has entered or updated form data, and they select the Back button or navigate elsewhere in the site, a confirmation modal window is displayed asking the user if they want to save their changes.

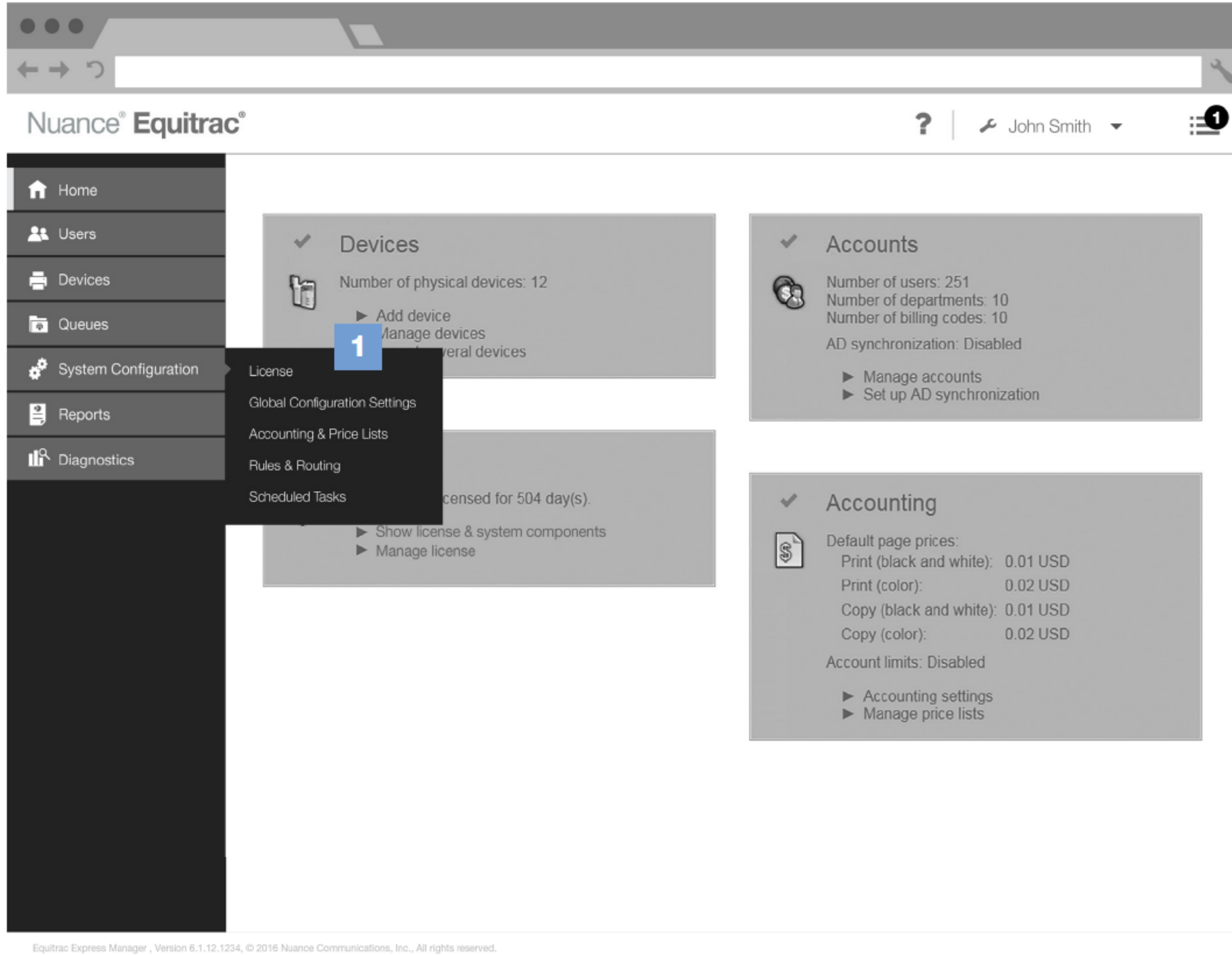
Refer "Confirmation Modal Windows" on page 64.

If user has entered or updated form data, and selects to Cancel, it's an explicit command that they want to cancel out of what they're doing. Wasn't deemed necessary to display a cancel confirmation modal in this case.

Modal confirmation displayed when Back selected and user has entered or updated form data - not an explicit command that user wants to "cancel". Want to make sure user realizes they're going to lose any updates they might have made.

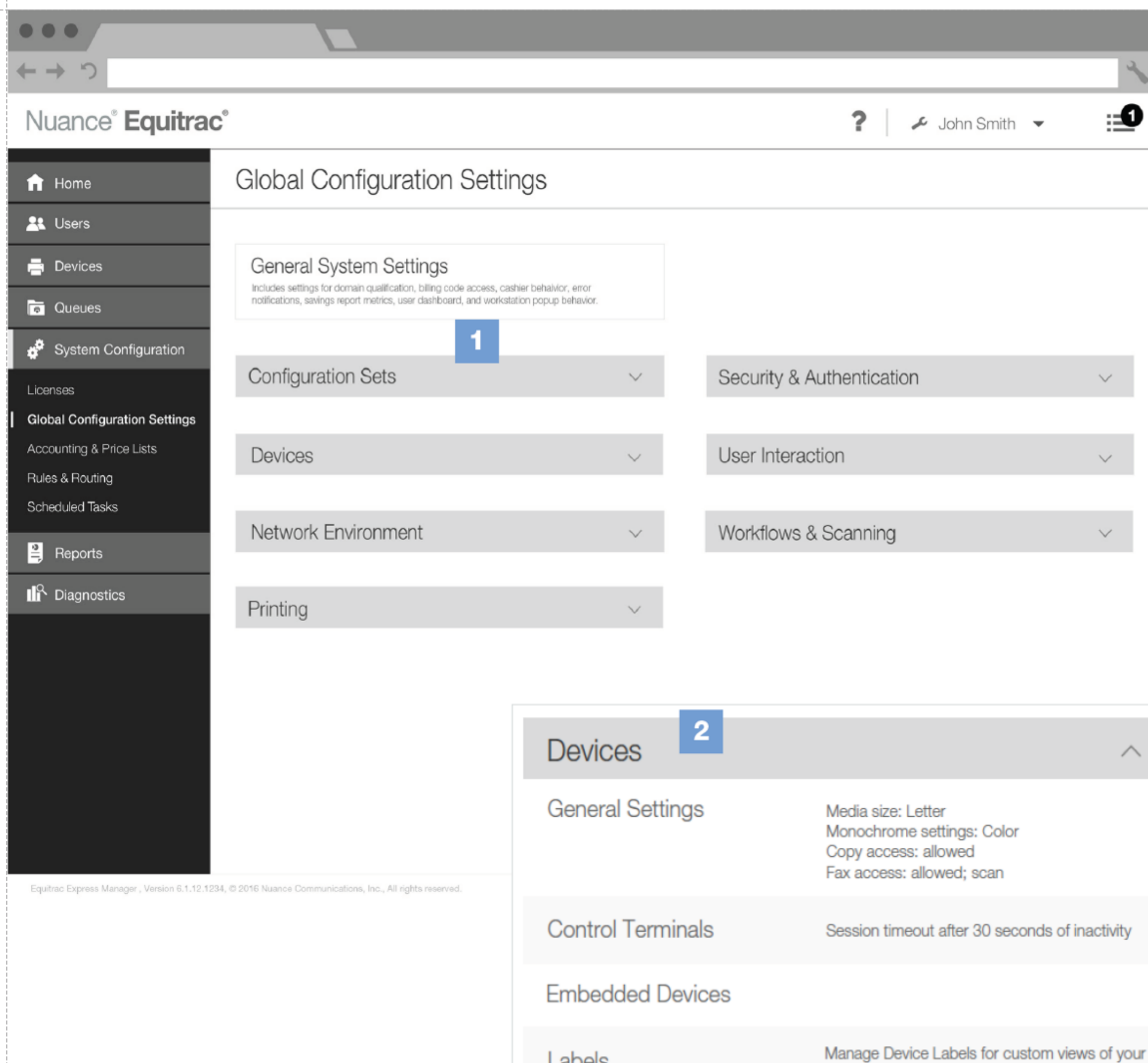


This is a primary nav landing page example - no secondary nav available for selected primary nav section.



This is a secondary nav landing page example.

Reminder: no "System Configuration" specific landing page - user is taken to first secondary nav section when primary nav selected - if there's associated secondary nav.



## Landing Page with Content Categories Links

- 1 Landing Page with Links** - the Global Configuration Settings landing page is an example of a landing page that allows users to access a third level of navigation/links in the context of the page content area.
- 2 Section Headers** - the page has expandable (and then collapsible) content sections. When a section header is expanded its subcategories are displayed. The subcategories link to associated settings sub-pages.

# Navigation (Pattern Guide p 7-11)

---

Sometimes you see the primary/secondary navigation sometimes not. When does it not show?

## Guideline

- After primary or secondary landing pages...when user selects a button or link on the landing page to more "detail" or to perform an action (which is displayed in a new page)

# Navigation (Pattern Guide p 7-11)

---

- Back button used after primary or secondary landing pages. It lets the user get back their original context
- Almost always "Back" takes the the user back to the primary navigation context
- Since navigation is not that "deep", decided that breadcrumbs not necessary

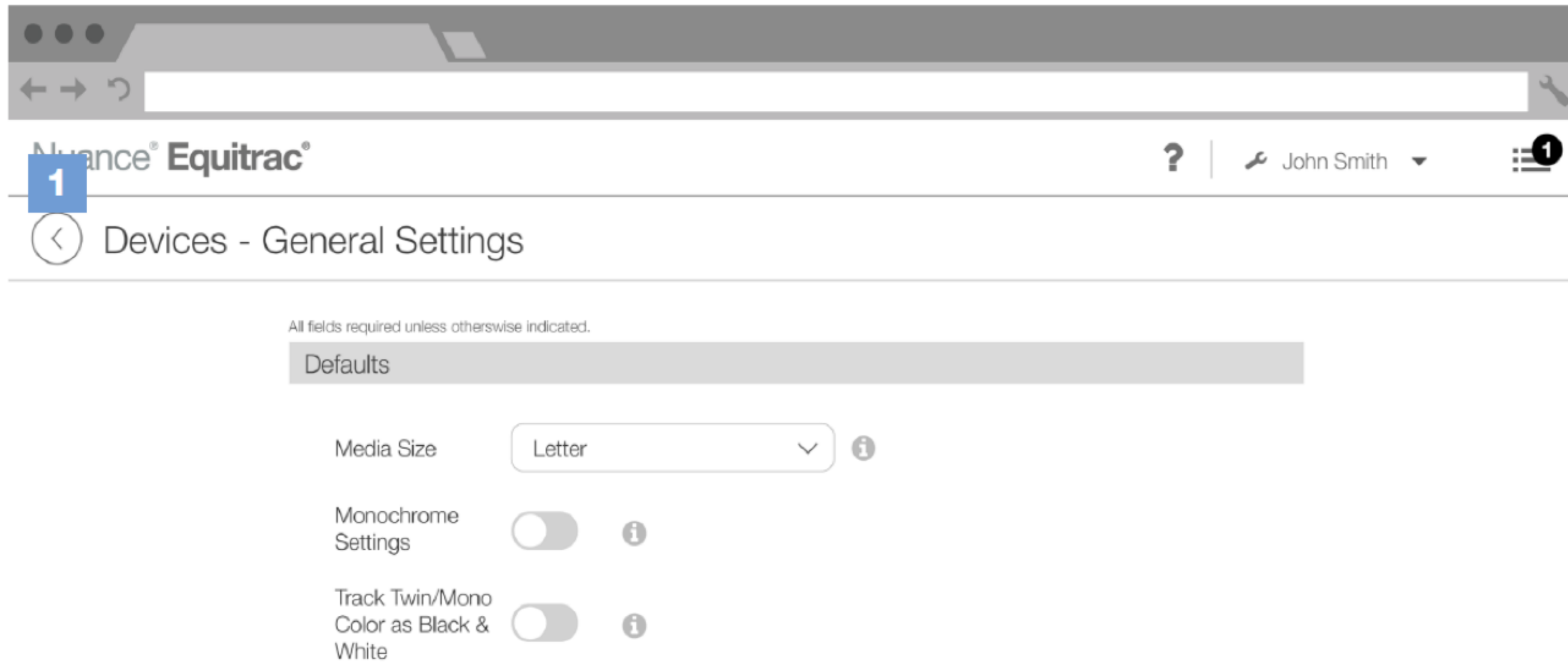


# Sidebar Navigation for "like-type" Objects

(e.g. Equitrac WFs - Framework and Config Dec13 p4-5)

The image displays two overlapping screenshots of the Nuance Equitrac configuration interface. The top screenshot shows the 'Global Configuration Settings' page with a sidebar on the left containing navigation items: Home, Users, Devices, Queues, System Configuration, Licenses, Global Configuration Settings (highlighted), Accounting & Price Lists, Rules & Routing, Scheduled Tasks, Reports, and Diagnostics. The bottom screenshot shows the 'Embedded Devices Configuration' page for 'Xerox ECSP'. The sidebar in this view lists various device models, with 'Xerox ECSP' highlighted. The main content area includes sections for 'Tracked Activities' (Copy, Print, Scan, Received Fax, Sent Fax), 'Device Prompts' (Title, Login Prompt), and 'Settings' (Force Logout on Swipe, Enable Job Limits, End session after 60 seconds of inactivity). A tooltip is visible over the 'Title' field, stating: 'Field Level information text goes here. Include implications of what setting does....'

When “Devices - General Settings” selected...  
(page 10 in Pattern Guide)



## Back Button

Only primary and secondary navigation landing pages are displayed in context of the primary navigation sidebar panel.

Pages that are accessed by selecting a link (or action) from a primary or secondary navigation landing page do not display the primary navigation sidebar panel.

- 1 Back Button** - pages that don't display in the context of the primary navigation sidebar panel always have a Back button. The Back button is displayed in the page header (next to the Page Title). Selecting the Back button takes the user back to the page from where the current page was accessed.

3. How can we improve, if needed, something like this. Note that this page is reachable from within the Session flow link Global Configuration Settings. Once we are inside Session flow page, or any other page, we loose track to how we got there.

- Lost the page title "Global Configuration Settings"
- Styling of expandable setting section titles, and associated settings not right.

- Primary/secondary nav shouldn't be displayed. Not a "landing page" associated directly with primary or secondary nav item

- Use "Page Form Display - Add/Edit" model from Pattern Guide p. 18 (with no side bar nav)

- Have "Back" button and page title "Session Flow"

- Capitalize Section words (?)

- Field layout - suggest vertical/stacked, not side by side - especially for sections

- Reinforce field grouping with white space, not boxes

- More vertical spacing between fields so labels better associated with field input

- Extra line thru last field on page

- Missing Cancel button



Example of a similar page accessed from Global Config Settings:  
(Page Form Display Add/Edit)

The screenshot displays the Nuance Equitrac web interface. At the top, the browser address bar shows the URL. The page header includes the Nuance Equitrac logo, a help icon, the user name 'John Smith', and a notification icon. The main heading is 'Devices - General Settings'. Below this, a note states 'All fields required unless otherwise indicated.' The configuration is organized into sections: 'Defaults', 'Function Access Control', 'Monochrome Copy', 'Color Copy', 'Fax', and 'Scan'. Each section contains specific settings such as 'Media Size' (set to Letter), 'Monochrome Settings' (disabled), 'Track Twin/Mono Color as Black & White' (disabled), and 'Default Access' (set to 'Allow all users'). There are also 'Exceptions' fields with 'Validate' buttons and information icons.

All fields required unless otherwise indicated.

### Defaults

Media Size: Letter i

Monochrome Settings:  i

Track Twin/Mono Color as Black & White:  i

### Function Access Control

#### Monochrome Copy

Default Access:  Allow all users i  
 Deny all users

Exceptions:   i

#### Color Copy

Default Access:  Allow all users i  
 Deny all users

Exceptions:   i

OS Group1

OS Group2

#### Fax

Default Access:  Allow all users i  
 Deny all users

Exceptions:   i

#### Scan

Default Access:  Allow all users i  
 Deny all users

Exceptions:   i



Nua **1** Equitrac®

John Smith

← Add Physical Device

Settings

**General**

Pricing

Output

Advanced

**2**

**General Settings**

All fields required unless otherwise indicated.

**Definition**

Name

Hostname/IP Address

Description (Optional)

Manufacturer

Model

Monochrome Settings

Location

SNMP Configuration

Type: Physical Device

Hardware Address:

**3**

**General Settings**

\* Indicates required field

**Definition**

Name \*

Hostname/IP Address \*

Description

**4**

**Release Documents Behavior**

Release documents at assigned control terminal

Release documents from pull group

**Settings**

Rule Set (Optional)

Tracking Behavior

DME Server (Optional)

Secure Printing Default

**5**

Save

Cancel

## Page Form Display - Add/Edit

- 1 Full Page Display with Back Button** - the page is not displayed in context of the navigation sidebar panel.
- 2 Navigation Categories (optional)** - if the form warrants being divided into categories then category side navigation can be used.

Note: Use the Advanced category for form fields/settings that an administrator does not frequently access.

- 3 Required Fields** - required fields are indicated with a "\*". Text at the top of the page states "\* Indicates required field".

Note: Some Wireframes shown in the Pattern Guide reflect an out-of-date design ("All fields required unless otherwise indicated" was updated).

Wireframes do not reflect all actual required form fields (those shown are for illustrative purpose).

- 4 Page Sections** - a setting category page can be divided into sections.
- 5 Save** - for the "Add" new object scenario, the Save button is in a disabled state until all the required fields on the page are specified.

For an object Update /Edit scenario the Save button is in a disabled state until user updates a field.

- 6 Cancel** - returns the user to previous page they were on (same navigation as the Back button).

Also refer to: "Form Button Placement Example - Save Model" on page 44, and "Form Save Model" on page 54.

Note: The form field layout reflected in the wireframe designs does not reflect the final design delivered in the responsive HTML form component.