



Digital Scrapper Premier 2023, Volume 5

Lesson 2, Out-of-Bounds Photo

Digital Scrapper Premier 2023, Volume 5

Lesson 2, Out-of-Bounds Photo (Photoshop Elements)

by Jen White

Master the secret recipe for designing scrapbook pages with a believable out-of-bounds photo.

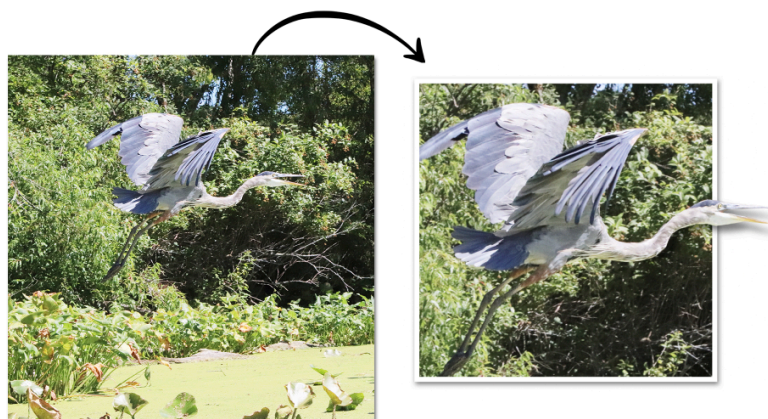
This manual includes Part A and Part B of Lesson 2.

© 2023 Digital Scrapper
[Terms of Use](#)

NOTE: Please complete the lessons in the order they are provided.

For this lesson you will need:

- the OutOfBounds document from the Class-Files that you saved at the end of Lesson 1.
- photo1 from the Class-Files folder.



Quick Steps for Lesson 2, Out-of-Bounds Photo

Step-by-step instructions are below.

- Open the OutOfBounds document that you saved in Lesson 1.
- Group the layers of the background, rename the group FOURSQUARE GRUNGE, and hide the visibility of the group.
- Add a photo with out-of-bounds potential.
- Mentally determine which part of the photo will be clipped and which part will be out of bounds.
- Add a photo mask and clip the photo to it.
- Add a drop shadow and a 30 px white stroke to the clipping mask layer.
- Duplicate the photo layer and reduce the Opacity to 50%.
- Select a portion of the photo for out-of-bounds.
- Set the Opacity back to 100%.
- Add a layer mask and apply it.
- Select the subject and add a layer mask.
- Clean up the selection with a hard round brush.
- Add a custom shadow to the masked photo.
- Push the hard edge of the shadow back under the masked pixels and skew the shadow.
- Group the out-of-bounds layers and rename the group OUT-OF-BOUNDS PHOTO.
- Reveal the visibility of the FOURSQUARE GRUNGE group.
- Move the out-of-bounds photo to the center of the document.
- Save the document.

Why Create an Out-of-Bounds Photo?

Out-of-bounds gives you the opportunity to remove distractions behind the subject of your photo without having to sacrifice protruding parts.

3 Main Characteristics of an Out-of-Bounds Photo

- An out-of-bounds photo will always have a portion of it masked, preferably with a stroke outline added for emphasis.
- An out-of-bounds photo will always have at least one protruding part.
- An out-of-bounds photo will always have a fabulous custom shadow.

How to Choose a Good Photo for Out-of-Bounds

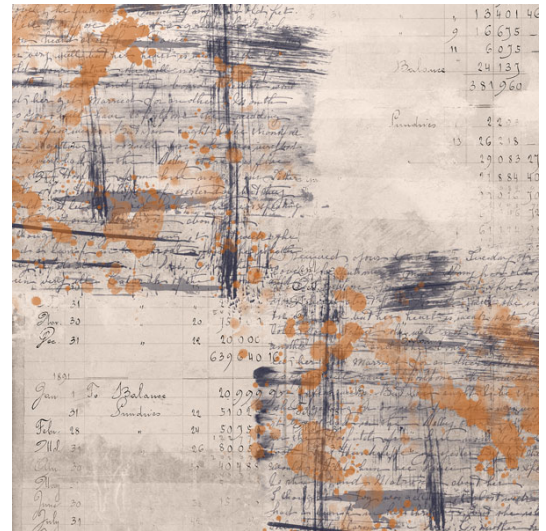
- The photo should have a clear, crisp subject, specifically in the part of the image that you want to go out of bounds.
- The out-of-bounds portion of the image should not contain intricate details, like hair or wires.
- The out-of-bounds portion of the image should not be dependent upon a clipped off portion of the image.
- The out-of-bounds portion of the image should not extend past the edge of the image.



Step-By-Step for Lesson 2, Out-of-Bounds Photo

Prepare Your Workspace

- Open the OutOfBounds document (File > Open) from the Class-Files folder. You saved this document at the end of Lesson 1.
- In the Layers panel, click on the top layer to activate it.
- Holding down the Shift key, click on the paper layer. Now the paper layer and all the overlay layers should be active. The Background layer should not be active.
- Click on the Create a New Group icon.
- Double click directly on the name of the new group, rename it FOURSQUARE GRUNGE, and press Enter/Return to commit the change.
- Click on the Visibility icon of the FOURSQUARE GRUNGE group to temporarily hide it.



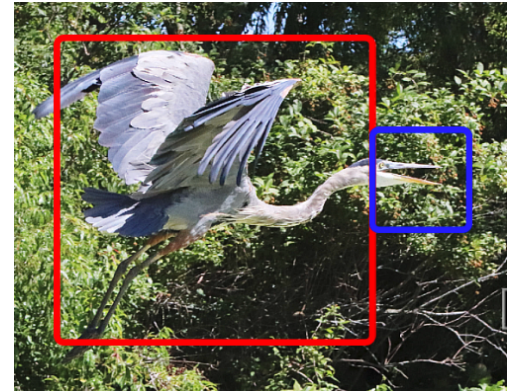
Add a Photo with Out-of-Bounds Potential

- Open photo1 (File > Open) from the Class-Files folder.
- Get the Move tool.
- In the Tool Options, uncheck both Auto Select Layer and Show Bounding Box.
- Holding down the Shift key, click and drag the photo onto the document. It should land in the center.
- Press Ctrl T (Mac: Cmd T) to get the Transform options.
- Click and drag inward on the corner handles of the bounding box until the boundaries of the photo are slightly smaller than the boundaries of the document.
- Click the checkmark to commit the change.



Determine the Position of the Clipping Mask and Out-of-Bounds

- Make a mental note of which part of the photo you want clipped to a clipping mask. (Shown in red.)
- Make a mental note of which part of the photo you want extended out of bounds. (Shown in blue.)



Add a Photo Clipping Mask

- In the Layers panel, the photo layer should be active.
- Holding down the Ctrl key (Mac: Cmd key), click on the Create a New Layer icon. This will create a new layer below the active layer.
- Double click directly on the name of the new layer, rename it PHOTO CLIPPING MASK, and press Enter/Return to commit the change.
- Get the Rectangular Marquee tool.
- In the Tool Options, click on the New Selection icon. Set the Feather to 0 and the Aspect to Normal.
- Press the letter D to reset the Color Chips to the default of black over white.
- On the document, click and drag a selection outline around the part of the photo you want clipped to a clipping mask. To reposition while dragging, hold down the Space bar.
- My selection is approximately 6 inches square.
- Press Alt Backspace (Mac: Opt Delete) to fill the selection with the foreground color.

NOTE: You will not see a change on your document.

- Press Ctrl D (Mac: Cmd D) to deselect.
- In the Layers panel, hold down the Alt key (Mac: Opt key) and click between the photo layer and the PHOTO CLIPPING MASK layer to clip the photo.



Add a Drop Shadow and a Stroke Outline

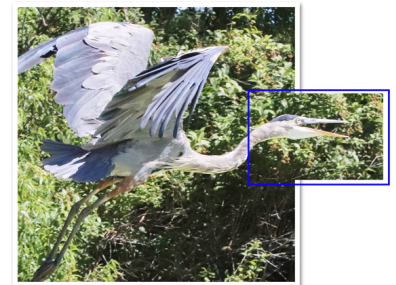
- In the Layers panel, the PHOTO CLIPPING MASK layer should be active.
- In the Menu Bar, choose Layer > Layer Style > Style Settings.
- In the dialog box, set the Lighting Angle to 120. Click on Drop Shadow to activate it and reveal the settings. Set the Size to 25, the Distance to 15, and the Opacity to 50. Click on Stroke to activate it and reveal the settings. Set the Size to 30, the Position to Inside, and the Opacity to 100. Click on the Color Chip to open the Color Picker. In the Color Picker, choose white and click OK to close the Color Picker. Click OK to close the Style Settings dialog box.



Isolate the Out-of-Bounds Portion of the Photo

- In the Layers panel, click on the photo layer to activate it.
- Press Ctrl J (Mac: Cmd J) to duplicate the photo layer.
- In the Layers panel, set the Opacity to 50%.
- Get the Rectangular Marquee tool.
- On the document, click and drag a selection outline around the part of the photo you want to take out of bounds. Include a portion of the clipped photo as well. To reposition while dragging, hold down the Space bar. (See the screenshot.)
- In the Layers panel, set the Opacity to 100%.
- Click on the Add Layer Mask icon.
- Right click (Mac: Ctrl click) on the layer mask and choose Apply Layer Mask.

NOTE: If the layer will not apply, first Right click (Mac: Ctrl click) on the duplicate photo layer and choose Simplify Layer.



- In the Layers panel, choose Select > Subject.

NOTE: With every new release of Photoshop Elements, the technology greatly improves. So, newer versions of PSE will produce better Select Subject results.

- Press Ctrl + (Mac: Cmd +) several times to zoom in so that you can clearly see the entire selection outline. To reposition the zoom, hold down the Space bar and click and drag on the document.
- In the Layers panel, click on the Add Layer Mask icon.



Clean Up the Image with a Hard Round Brush

- Get the Brush tool.
 - In the Tool Options, open the Brush Picker. Click on the dropdown menu and choose Default Brushes. Choose a Hard Round brush. If you cannot see the names of the brushes, open the flyout menu and choose Large List. Set the Opacity to 100 and the Style to Normal. Click on Brush Settings. Set the Spacing to 5. Set the Fade, Hue Jitter, and Scatter to 0. Set the Hardness and Roundness to 100. Click on Tablet Settings and uncheck all options.
 - In the Layers panel, the layer mask of the duplicate photo layer needs to stay active.
- NOTE: In this portion of the video, I've added an overlay to my cursor because the outline of the brush is not always visible.
- To switch the Color Chips, press the letter X. Black will hide pixels and white will reveal pixels.
 - To resize the brush, press the Left or Right Bracket keys.
 - In the Layers panel, click on the Visibility icon of the PHOTO CLIPPING MASK layer to temporarily hide it. Make sure the layer mask is still active.
 - On the document, click, or click and drag, to hide or reveal pixels.
 - To brush in a straight line, click, then holding down the Shift key, click again in a different location.
 - To step backward and redo edits, press Ctrl Z (Mac: Cmd Z).



- In the Layers panel, click on the Visibility icon of the PHOTO CLIPPING MASK layer to reveal it.

Add a Custom Shadow

- In the Layers panel, hold down the Alt key (Mac: Opt key) and click and drag a duplicate photo layer directly below.
- Double click on the name of the new layer, rename it CUSTOM SHADOW, and press Enter/Return to commit the change.
- Press the letter D to reset the Color Chips.
- Press Shift Alt Backspace (Mac: Shift Opt Delete) to fill the pixels of the new layer with black.
- In the Menu Bar, choose Filter > Blur > Gaussian Blur.
- In the dialog box, set the Radius to 18 and click OK.
- In the Layers panel, set the Blend Mode to Multiply and the Opacity to 50%.

- Press Ctrl T (Mac: Cmd T) to get the Transform options.
- On the document, hold down the Shift key to release proportion constraints and click and drag inward on the left-side handle of the bounding box. Hold down the Ctrl key (Mac: Cmd key) to access the skew and click and drag slightly downward on the right-side handle of the bounding box.
- Click the checkmark to commit the change.
- Press Ctrl 0 (Mac: Cmd 0) to zoom out.



Group the Layers

- In the Layers panel, click on the top photo layer to activate it.
- Holding down the Shift key, click on the PHOTO CLIPPING MASK layer.
- Click on the Create a New Group icon.
- Double click directly on the name of the new group, rename it OUT-OF-BOUNDS PHOTO, and press Enter/Return to commit the change.

Reposition the Out-of-Bounds Photo

- Get the Move tool.
- In the Layers panel, click on the Visibility icon of the FOURSQUARE GRUNGE group to reveal it. The PHOTO group should still be active.
- On the document, click and drag the out-of-bounds photo to the center of the document.
- Save the document (File > Save). You'll be using it again in Lesson 3.

