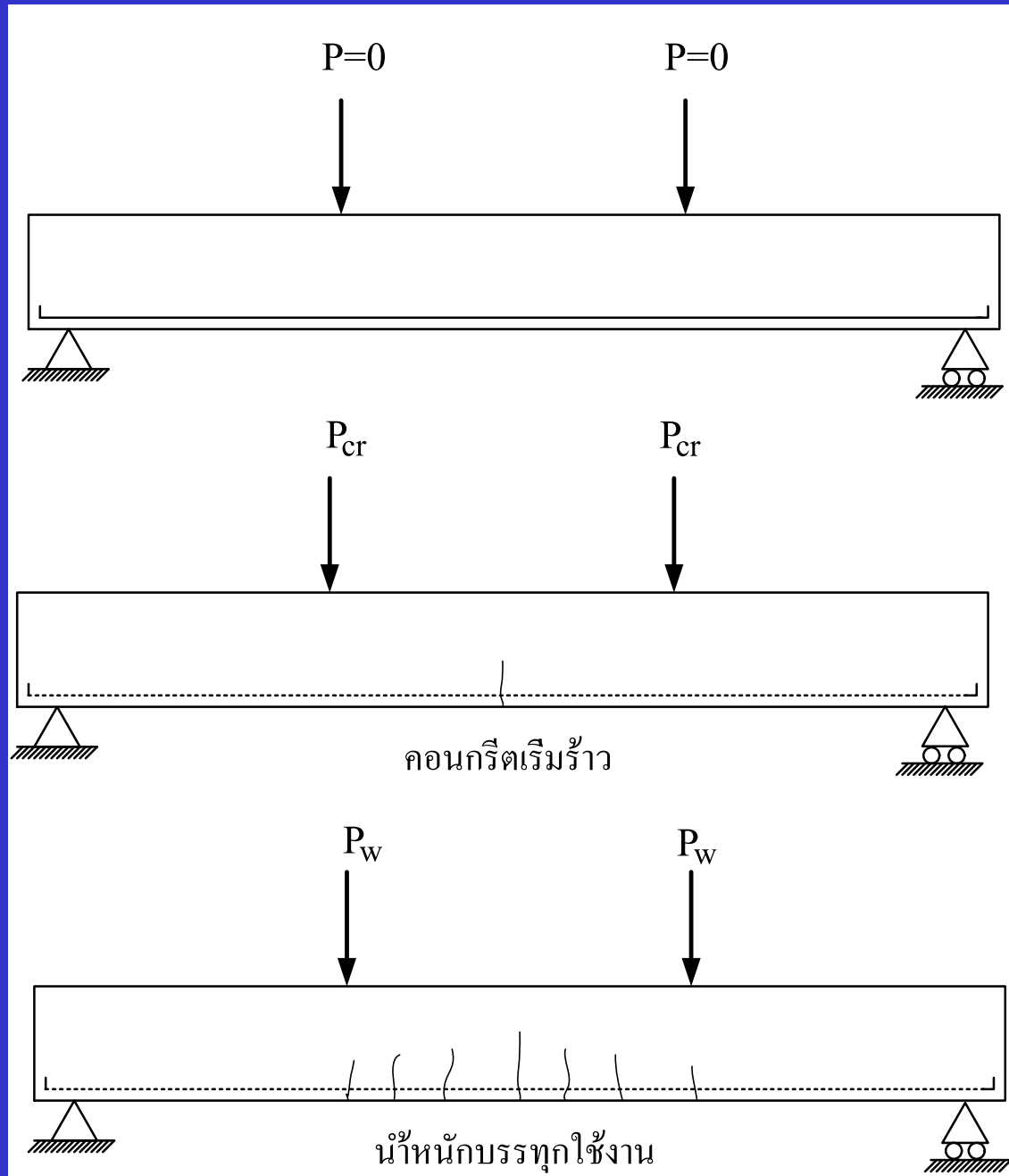
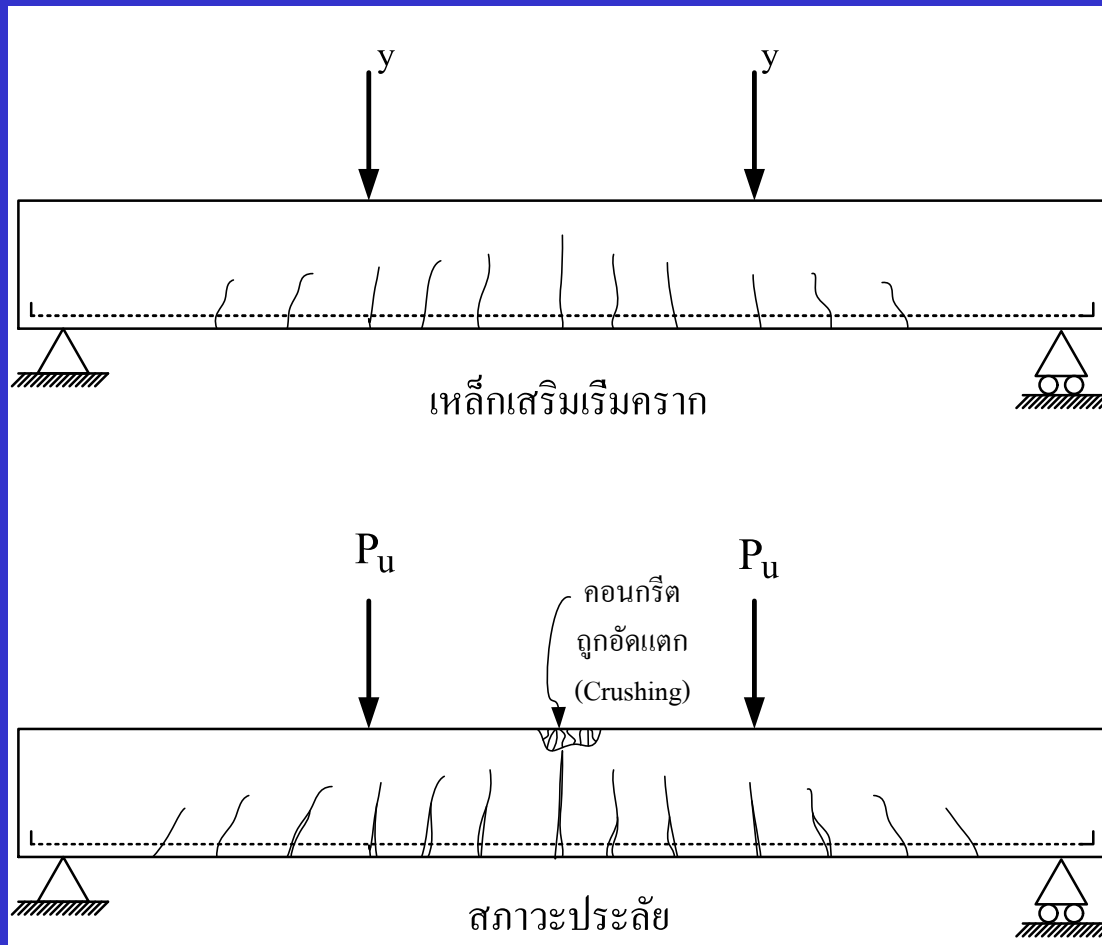


พฤติกรรมการค้ำ
Flexural behavior





Yielding of steel

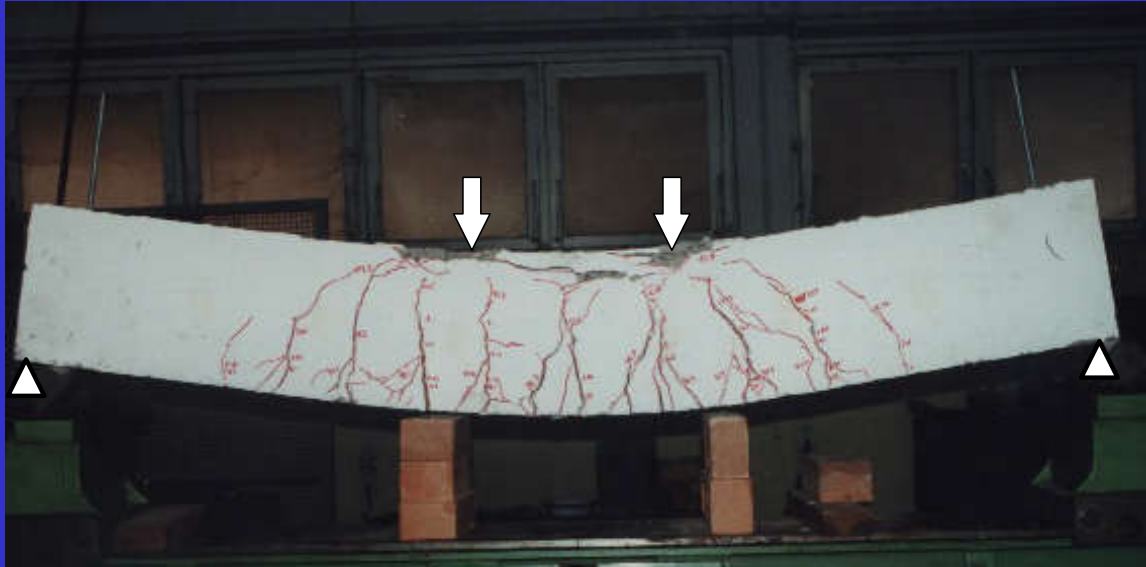
$$\epsilon_s = \epsilon_y$$

$$f_s = f_y$$

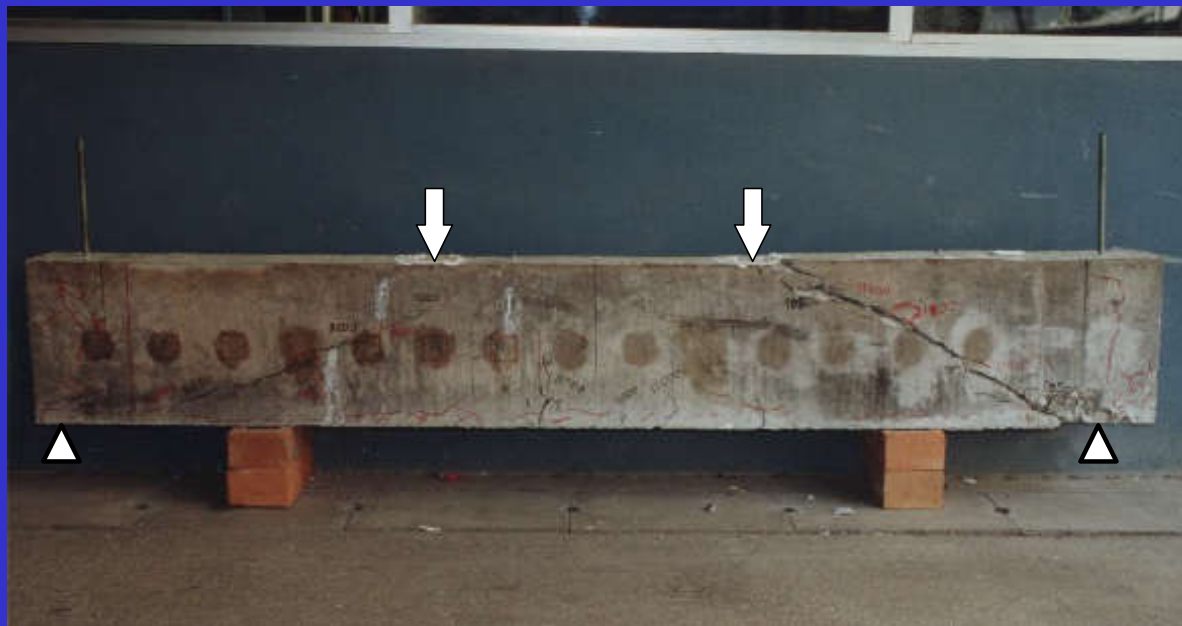
Ultimate (Under reinforce)

$$\epsilon_s > \epsilon_y$$

$$f_s = f_y$$



BEAM FAIL
BY BENDING



BEAM FAIL
BY SHEAR
(SLENDER BEAM)

