



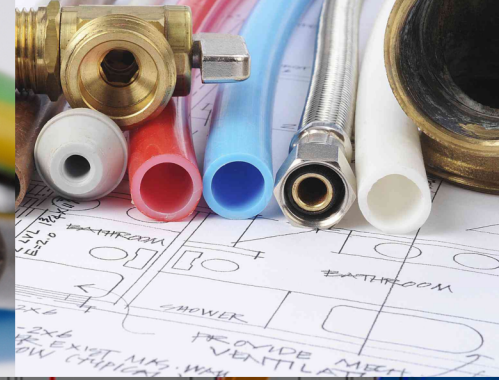
# SM TECHNO

## Training Services

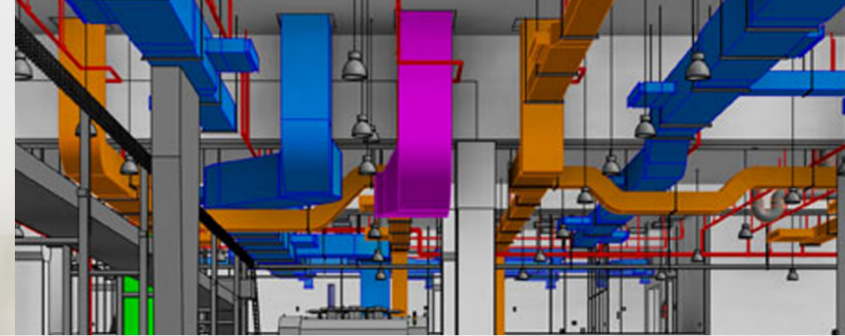


Registered by Government of  
Telangana, India.  
Regd. No. 1622/08.

SM Techno MEP Training Services is an ISO 9001: 2008 certified organization, providing a world class leading technical training in Mechanical, Electrical & Civil engineering disciplines to meet the requirements of skilled professionals in the field of Building Industry.



**Providing Career - Focused Training Programs**



**Training Mode: Video, Live Online & Classroom**



**H VAC**

**FIRE FIGHTING**

**ELECTRICAL**

**REVIT MEP**

**P LUMBING**

**REVIT ARCHITECTURE**

**Contact Us**

+91 9848699535  
+91 9666281571

Email:  
mep.smtechno@gmail.com

Address:  
OFFICE 201, 2nd FLOOR, City Tower,  
NALGONDA X ROAD, Malakpet,  
Hyderabad, Telangana - 500059.

[www.smtmep.com](http://www.smtmep.com)

**smt**  
online



ESTABLISHED: 2008  
REG. NO: 1622/08

# SM TECHNO

Training Services

## HIGHLIGHTS

# REVIT ARCHITECTURE

- Live online Training
- Classroom Training
- Video Courses
- Gulf experience faculty
- Digital classroom
- Basic to advance level
- Concept based training
- Software calculation
- Interactive sessions
- Updated syllabus
- Motivation

## COURSE STANDARDS



AUTODESK



+91-9848699535



WWW.SMTMEP.COM

# COURSE SYLLABUS

# REVIT ARCHITECTURE SYLLABUS

## 1. Chapter

- Introduction to Revit
- Revit File Types
- user Interface
- Starting a Project

## 2. Chapter

- Making levels & Grids
- Construction of Walls
- Construction of Modelling tools

## 3. Chapter

- Modify Commands
- Placement of Doors
- Placement of Windows

## 4. Chapter

- Construction of Floor
- Making of roof & ceiling
- Placements of Componentets

## 5. Chapter

- Dimensions
- Managing views

## 6. Chapter

- Making curtain Walls
- Making stair Case
- Placement of railing & ramp
- Massing

## 7. Chapter

- Text
- Tag
- Keynote
- Detailing

## 8. Chapter

- Schedules & quantities
- Area Analysis

## 9. Chapter

- Print & sheet settings
- Placement of lights
- Material Effect
- Rendering
- Walk Through

## 10. Chapter

- Working with linked Models
- Import/link CAD
- Export

**PROJECT  
&  
EXERCISE FILES**



**+91-9848699535**



[WWW.SMTMEP.COM](http://WWW.SMTMEP.COM)



## Our Office

OFFICE 201, 2nd FLOOR, City Tower, NALGONDA X ROAD, Judges Colony, Malakpet, Hyderabad, Telangana - 500059.

### Contact Us



+91 9848699535  
+91 9666281571



Email:  
mep.smttechno@gmail.com



**WWW**  
WWW . SMTMEP . COM



WEBSITE



LOCATION



YOUTUBE



INSTAGRAM

*"Elevate your career with SM TECHNO's comprehensive MEP training programs."*



Website: [smtmep.com](http://smtmep.com)  
Email: [info@smtmep.com](mailto:info@smtmep.com)  
Instagram: [www.instagram.com/smtechno](https://www.instagram.com/smtechno)  
Facebook: [www.facebook.com/SMTMEP](https://www.facebook.com/SMTMEP)