

Acupuncture Chart

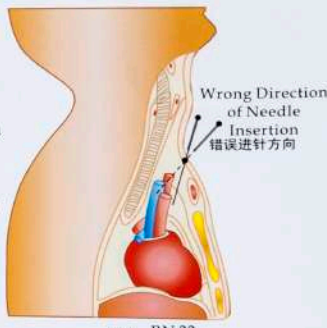
- 1 曲差 BL4
- 2 五处 BL5
- 3 承光 BL6
- 4 通天 BL7
- 5 络却 BL8
- 6 玉枕 BL9
- 7 天柱 BL10
- 8 脑空 GB19
- 9 承灵 GB18
- 10 正营 GB17
- 11 目窗 GB16
- 12 头临泣 GB15
- 13 翳明 Ex-HN4
- 14 瘈脉 SJ18
- 15 颅息 SJ19
- 16 上关 GB3

手厥阴心包经穴 Points of Pericardium Meridian, PC.

手太阳小肠经穴 Points of Small Intestine Meridian, SI.

手太阴肺经穴 Points of Lung Meridian, LU.

足太阳胃经穴 Points of Stomach Meridian, ST.



天突 RN 22

手太阳小肠经穴 Points of Small Intestine Meridian, SI.

手少阳三焦经穴 Points of Triple Energizer Meridian, SJ.

手太阴肺经穴 Points of Lung Meridian, LU.

手阳明大肠经穴 Points of Large Intestine Meridian, LI.

足厥阴肝经穴 Points of Liver Meridian, LR.

足太阴脾经穴 Points of Spleen Meridian, SP.

足少阴肾经穴 Points of Kidney Meridian, KI.

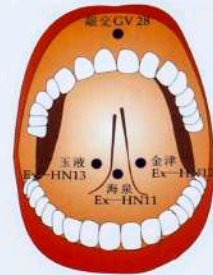
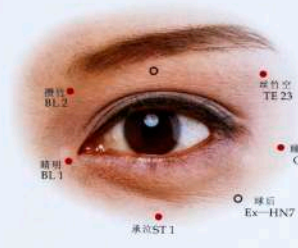
足少阳胆经穴 Points of Gallbladder Meridian, GB.

足太阳膀胱经穴 Points of Bladder Meridian, BL.

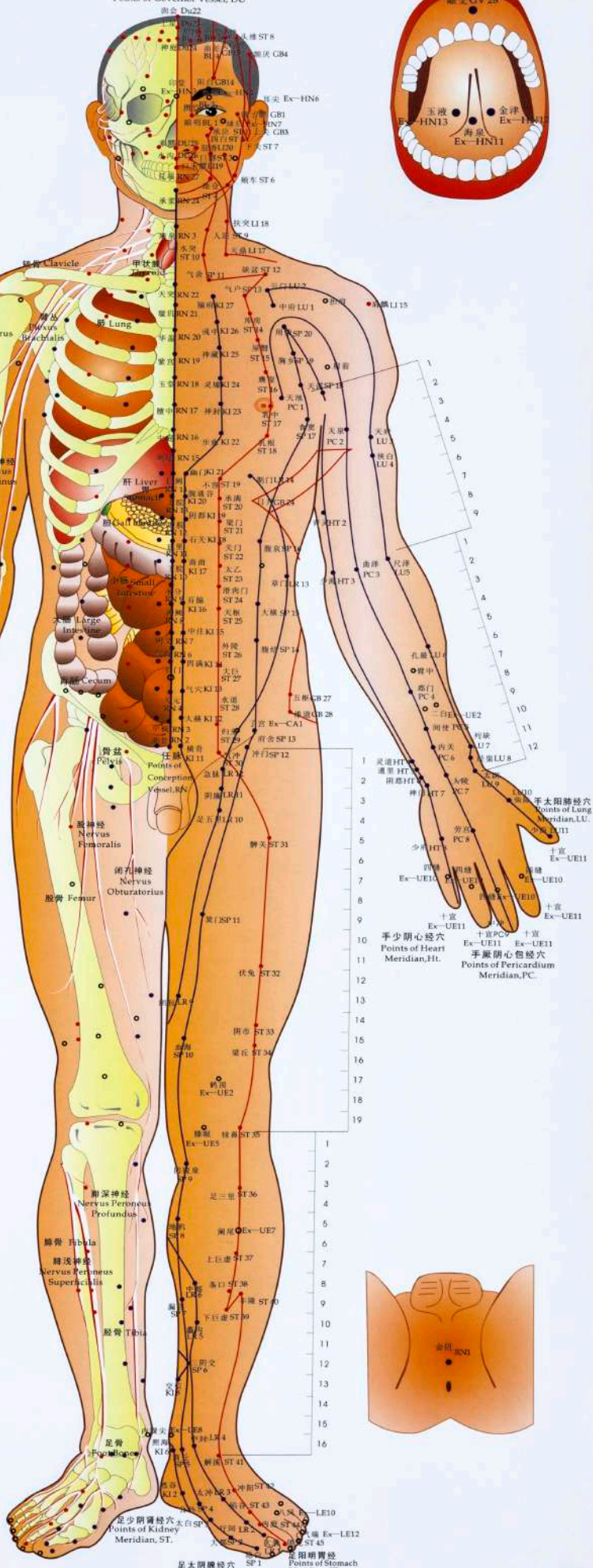
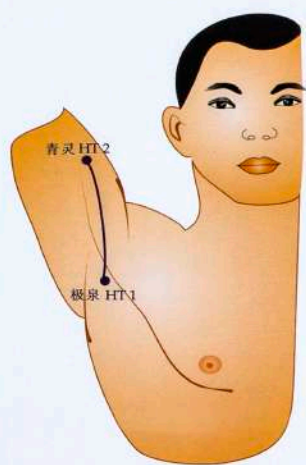


失眠 Shimian

督脉六 Points of Governor Vessel, DU



Acupuncture Chart



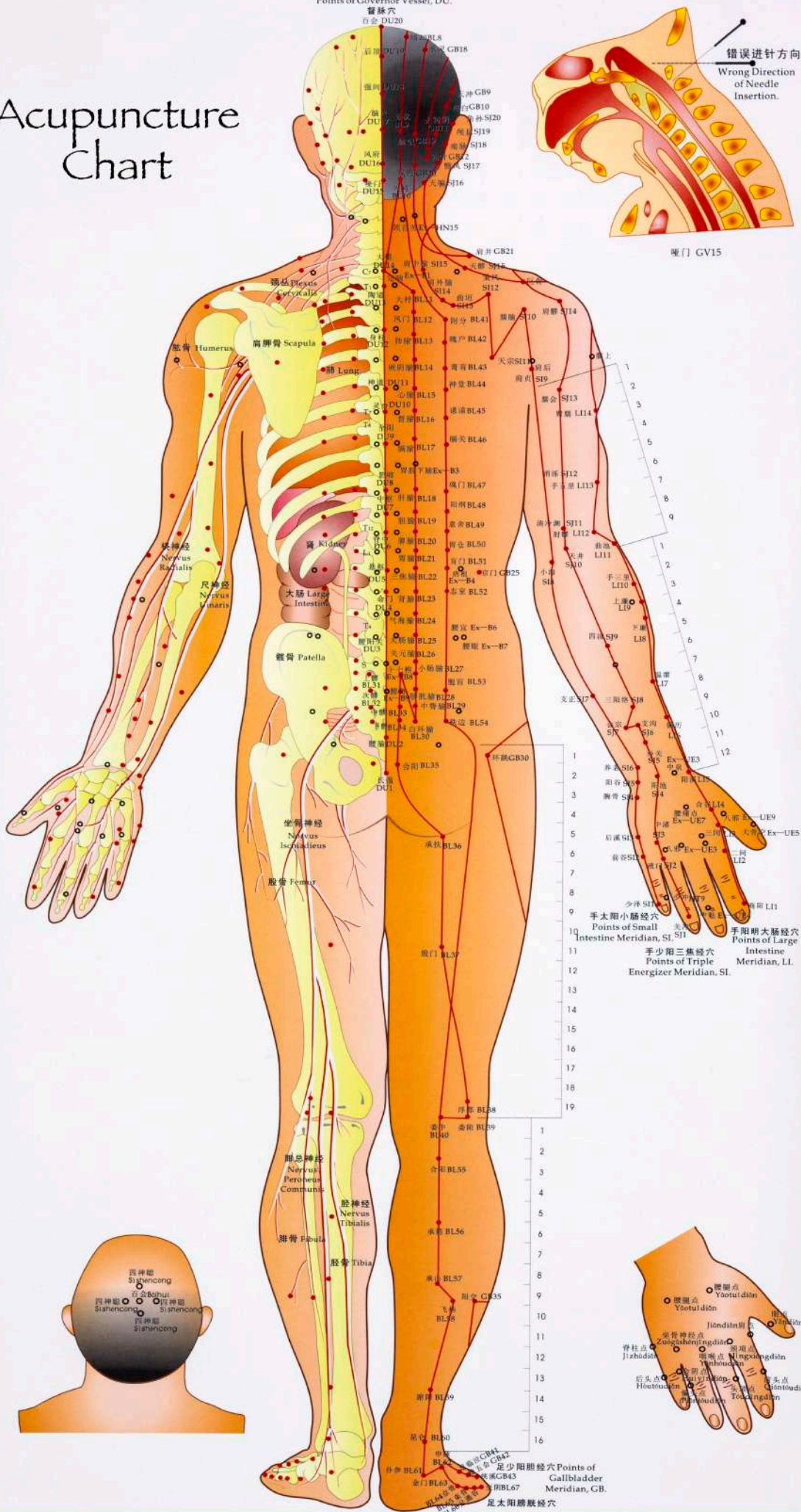
足太阳膀胱经六 Points of Bladder Meridian, BL
足少阴肾经六 Points of Kidney Meridian, KI
足阳明胃经六 Points of Stomach Meridian, ST
足厥阴肝经六 Points of Liver Meridian, LR

Acupuncture Chart

Points of Governor Vessel, DU.

督脉穴

百会 DU20



错误进针方向
Wrong Direction of
Needle
Insertion.

哑门 GV15

手太阳小肠经穴
Points of Small
Intestine Meridian, SI, SJ1

手阳明大肠经穴
Points of Large
Intestine Meridian, LI

手少阳三焦经穴
Points of Triple
Energizer Meridian, SJ

足太阳膀胱经穴
Points of
Gallbladder
Meridian, GB

足太阳膀胱经穴
Points of
Gallbladder
Meridian, GB

四神聪
Sishencong

百会
Baihui

四神聪
Sishencong

四神聪
Sishencong

四神聪
Sishencong

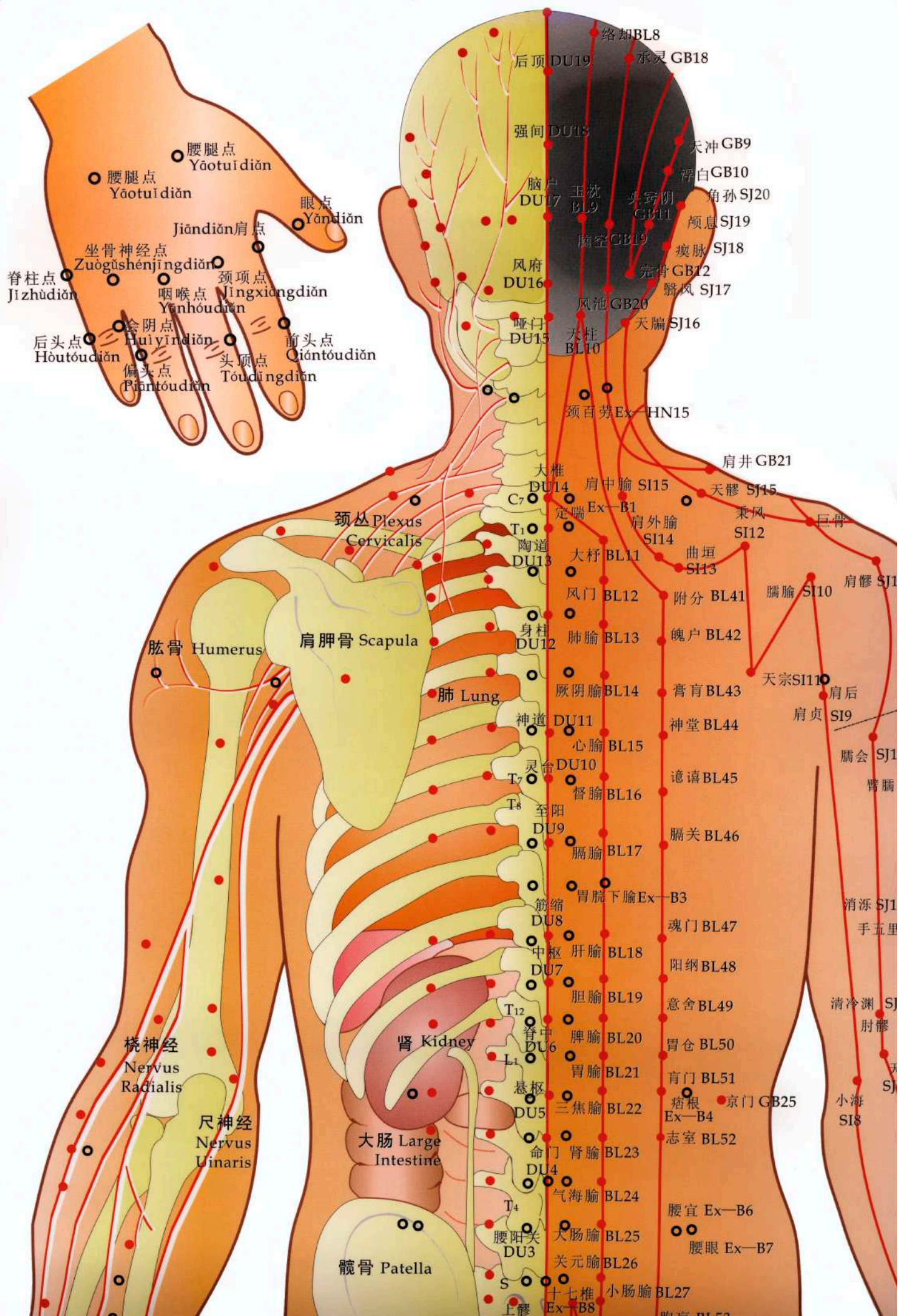
腰髎点
Yaoliao dian

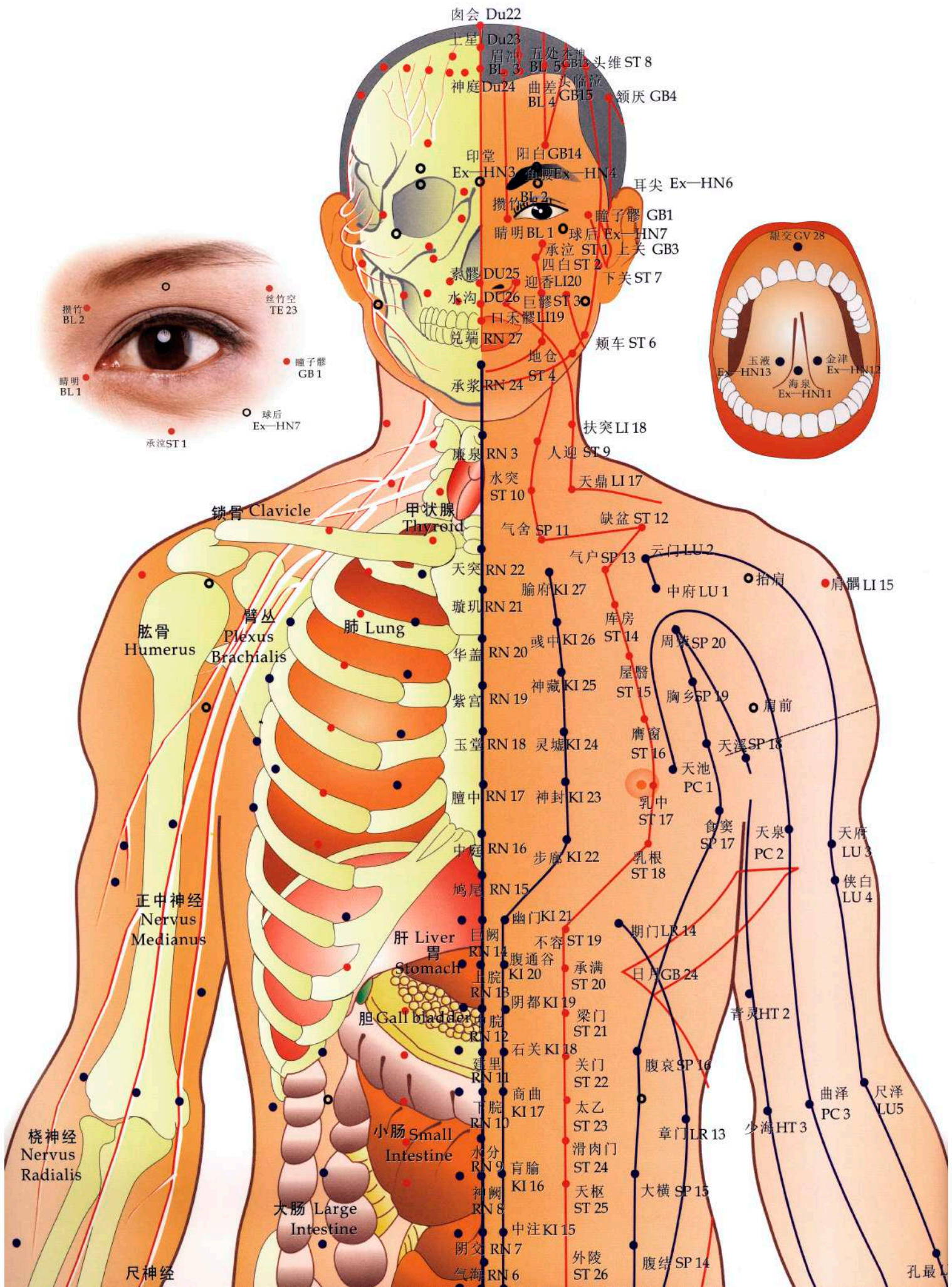
腰髎点
Yaoliao dian

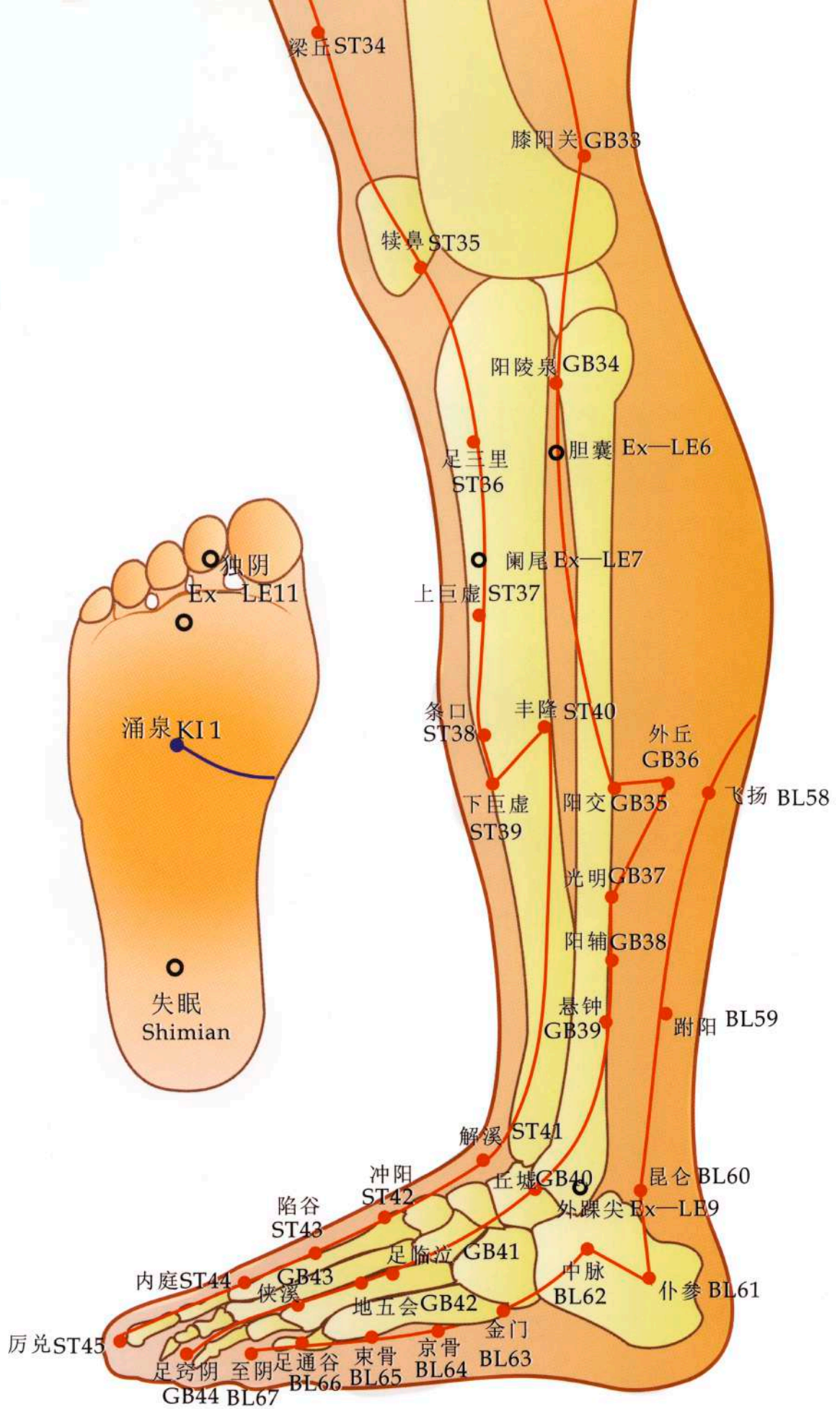
腰髎点
Yaoliao dian

腰髎点
Yaoliao dian

腰髎点
Yaoliao dian







足少阳胆经穴 足太阳膀胱经穴
 Points of Gallbladder Meridian, GB. Points of Bladder Meridian, BL.