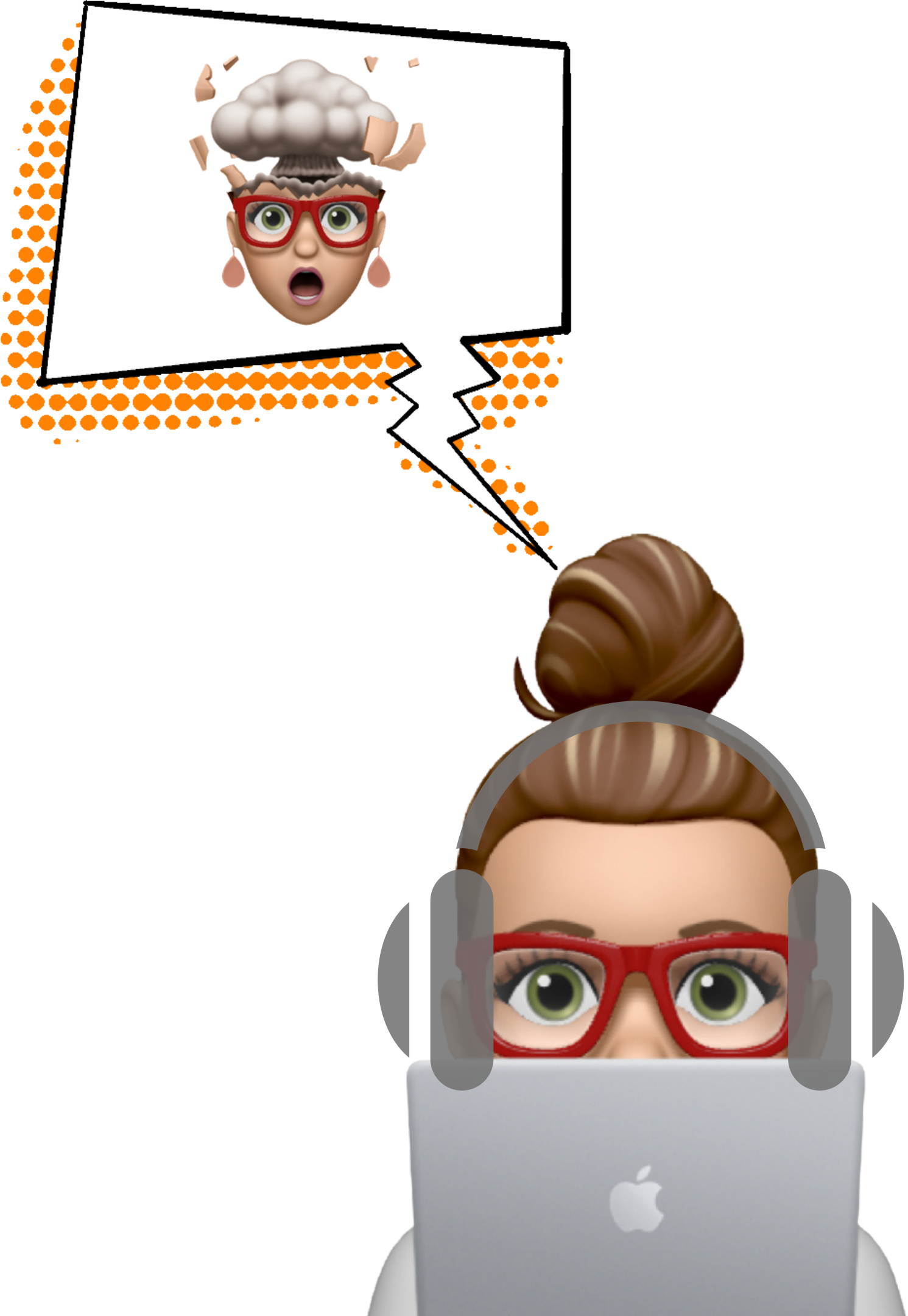


PDF GUIDE

HOW TO OVERCOME TECHNOLOGY OVERWHELM

SOUND Set-up Your Yeti Microphone

with
Siddiqi Ray



SOUND

HOW TO: SET-UP YOUR MICROPHONE - BLUE YETI



YETI
MICROPHONE



BOOM ARM



POP FILTER



SHOCK MOUNT

(Click for link to access on Amazon)

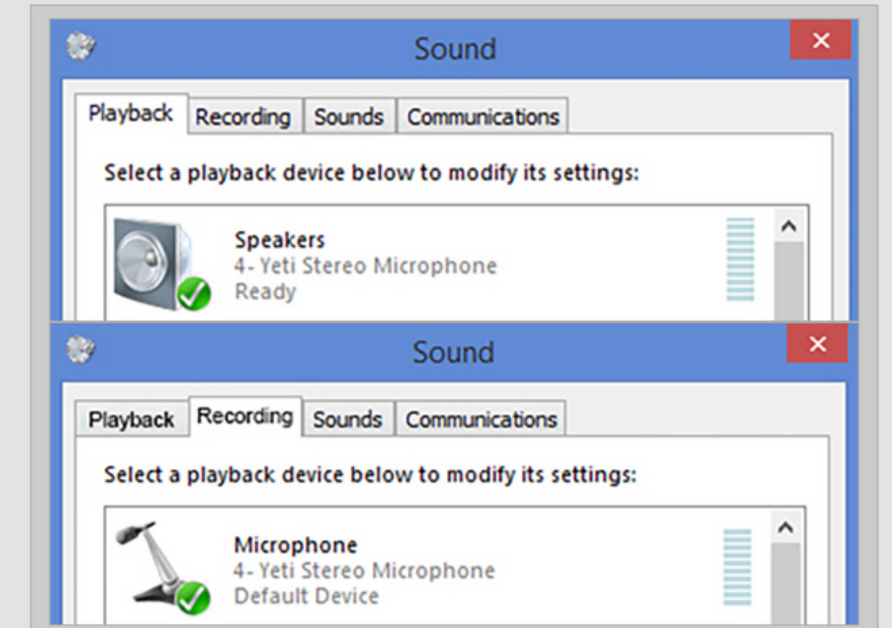
BLUE YETI HARDWARE SET-UP

Yeti is plug 'n play with MAC and PC systems and is compatible with Mac OS X (10.4.11 or higher), Windows 8 (incl. 8.1), Windows 7, Windows Vista, XP Home Edition, and XP Professional. Simply connect the Yeti directly to your computer with the supplied USB cable (avoid USB hubs or multipliers), and you are good to go. For more specific information about how to set up Yeti with MAC and PC, please see below.*

(MORE INFO AVAILABLE: <https://www.bluemic.com/en-us/yeti-support/>)

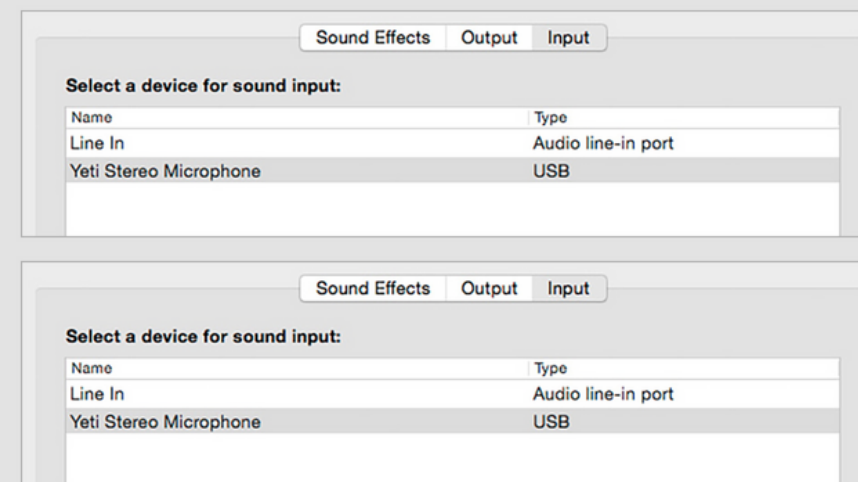
WINDOWS 8.1 SETUP PROCEDURE

- Connect Yeti with the supplied USB cable.
- Move your mouse to the lower-right side of the screen to open the Windows 8.1 Charms Bar menu, choose Settings, select Control Panel, and click on Hardware and Sound.
- Click on Sounds.
- Select the Playback tab, choose Yeti Stereo Microphone, and click the Set Default button.
- Select the Recording tab, choose Yeti Stereo Microphone, and click the Set Default button.
- Press OK.



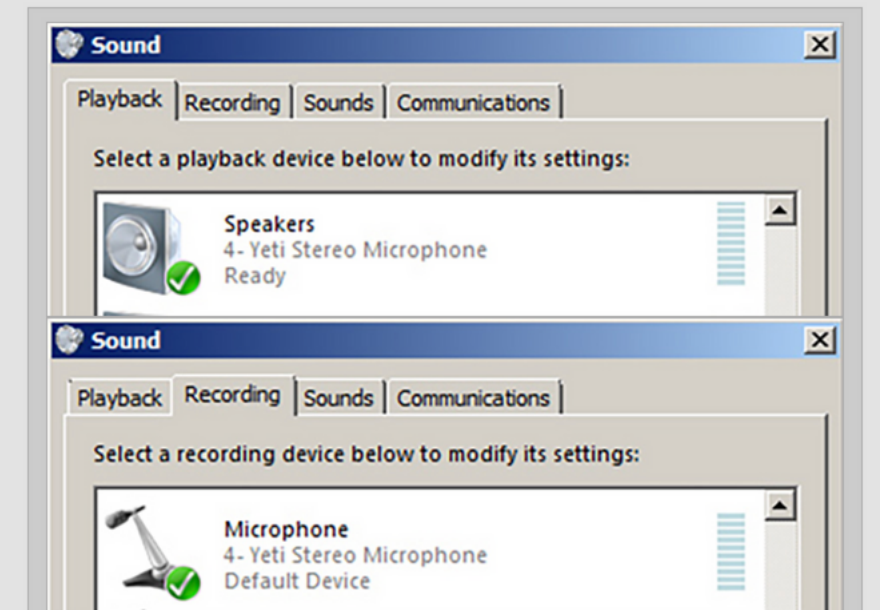
MACINTOSH SETUP PROCEDURE (OS X YOSEMITE)

- Connect Yeti with the supplied USB cable.
- Click Apple menu -> System Preferences.
- Select Sound.
- Click the Output tab, and select Yeti Stereo Microphone under Select a device for sound output.
- Click the Input tab, and select Yeti Stereo Microphone under Select a device for sound input.
- Exit System Preferences



WINDOWS 7 SETUP PROCEDURE

- Connect Yeti with the supplied USB cable.
- Under Start Menu open Control Panel, click on Hardware and Sound, then select Sound.
- Select the Playback tab, choose Yeti Stereo Microphone, and click the Set Default button.
- Select the Recording tab, choose Yeti Stereo Microphone, and click the Set Default button.
- Press OK.



SOUND

HOW TO: SET-UP YOUR MICROPHONE - BLUE YETI

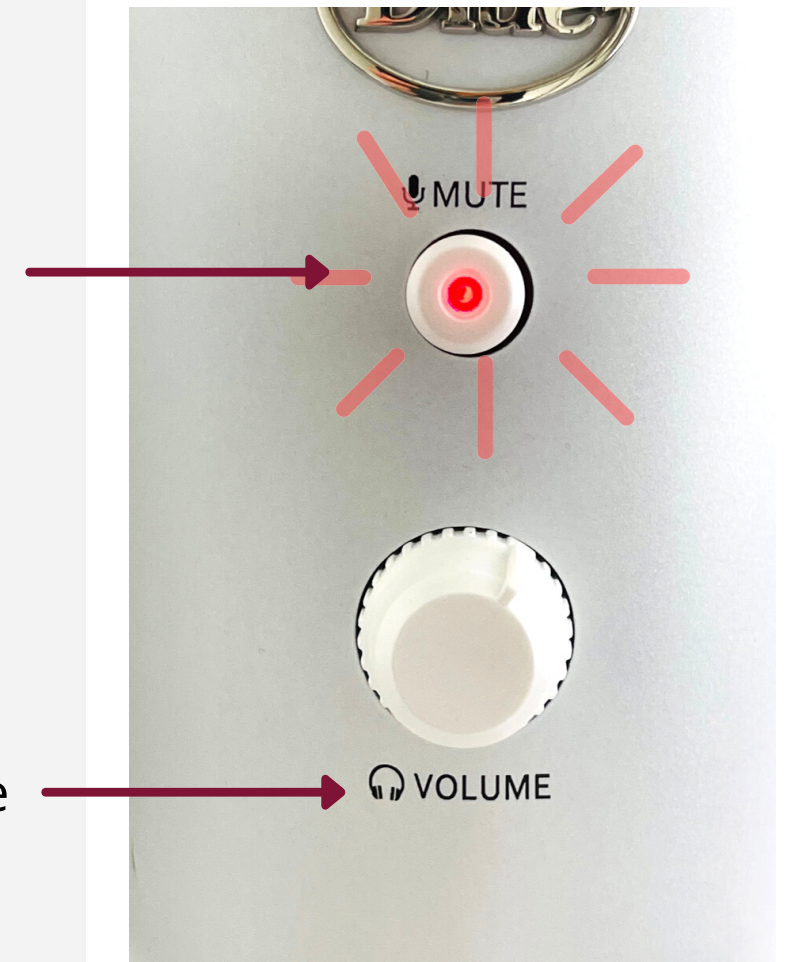


ON/OFF

- If this light is blinking, it means the microphone is muted. IF you don't have sound, ALWAYS check this first!

HEADSET VOLUME

- This only adjusts the volume on the sound YOU HEAR, not the actual volume. Use the GAIN knob to increase the amount of sound picked up by the microphone.



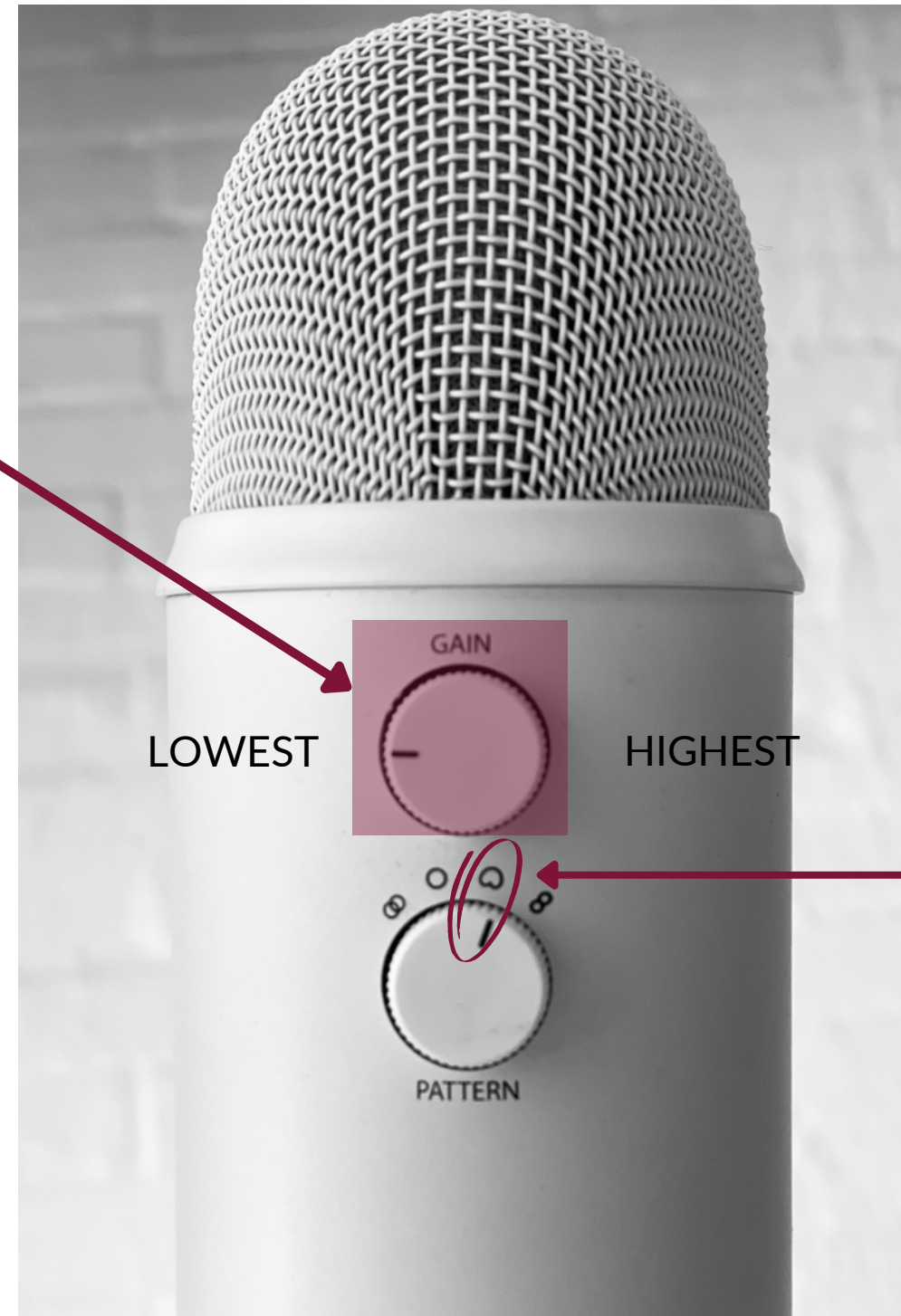
THERE ARE ONLY TWO SETTINGS YOU NEED TO ADJUST...



GAIN

- The level of sound coming into the microphone. Keep it as low as possible, otherwise, it picks up on all of the noise around you – not your gorgeous voice.

PATTERN

- This is the setting you need to use if you are doing podcasts, voiceovers, or recording vocals.



PATTERN SETTING SYMBOL	SOUND SOURCE & DIRECTION
	

THIS MICROPHONE PICKS UP SOUND FROM THE SIDE (NOT ON TOP)



SIDE TO SPEAK INTO - THE LOGO IS FACING YOU

FRONT



DO



DON'T

