

Why Student-Centered Coaching Matters

Learn how to ensure that instructional coaching impacts both teacher and student learning.

THE ESSENTIAL GUIDE FOR

STUDENT-CENTERED COACHING

What Every K-12 Coach and School Leader Needs to Know

DIANE SWEENEY
LEANNA S. HARRIS



www.dianesweeney.com



GUIDING PRINCIPLES FOR STUDENT-CENTERED COACHING



- Coaching is not about “fixing” teachers
- Coaching is a partnership focused on student learning
- Coaching is about continual professional growth
- Coaching is part of an ecosystem of professional learning

Where are our students now?

- Student evidence
- Open-ended learning tasks
- Formative assessment

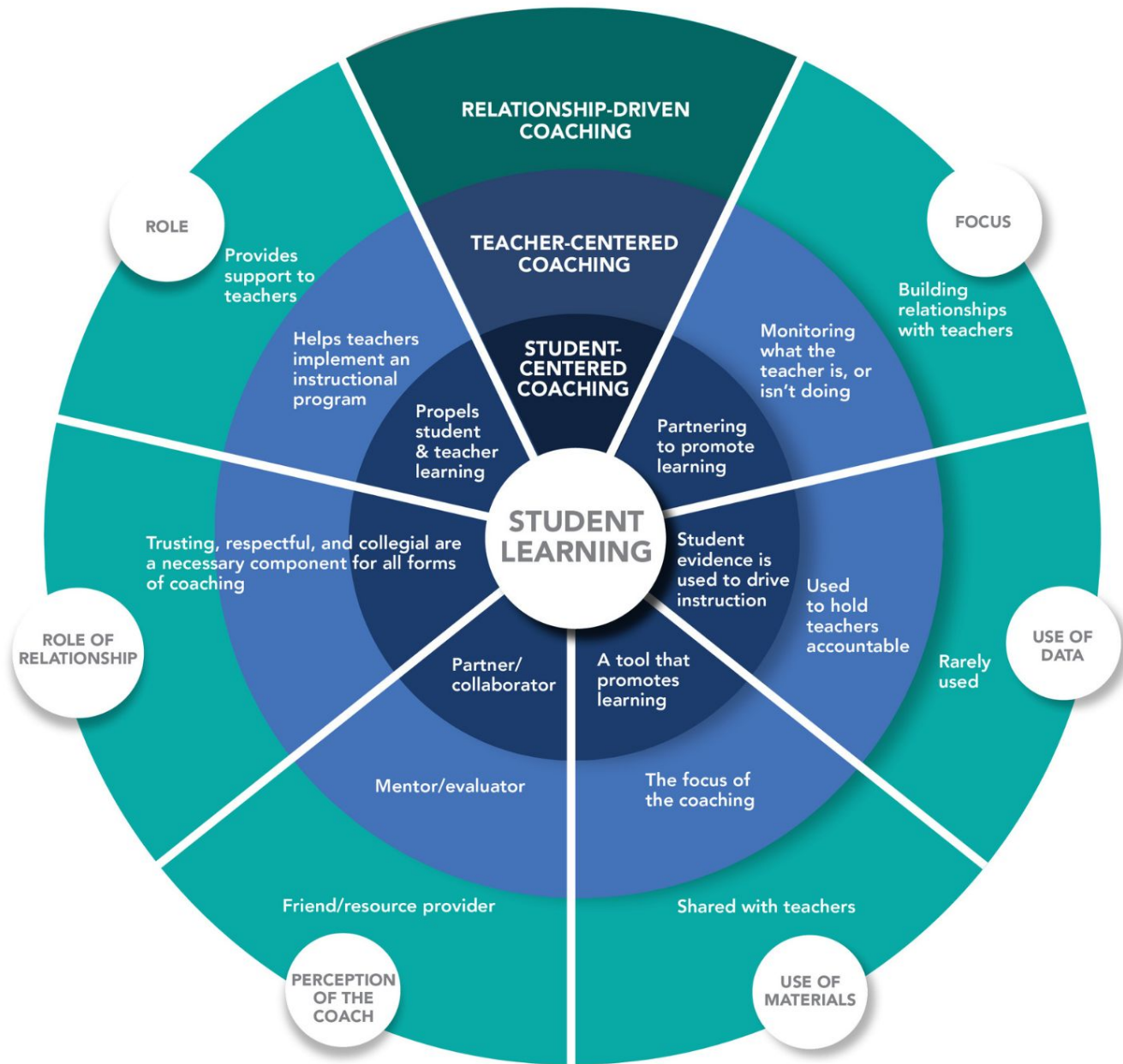


Student-Centered Coaching



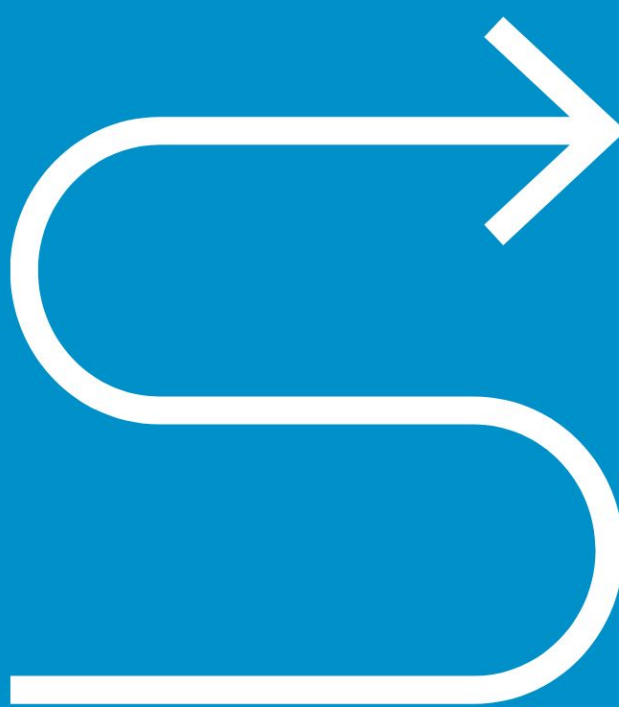
Where do we want our students to be?

- Learning targets
- Success criteria
- Well designed units of study



Structures for Student- Centered Coaching

- **Co-Planning Lessons**
- **Co-Planning Units**
- **Mini Coaching Cycles**



**Full
Coaching
Cycles**

7 Core Practices

for Student-Centered Coaching



Utilize coaching cycles

1



Set standards-based goals

2



Unpack the goal into learning targets

3



Co-plan with student evidence

4



Co-teach using effective instructional practices

5



Measure the impact on student and teacher learning

6



Partner with the school leader

7

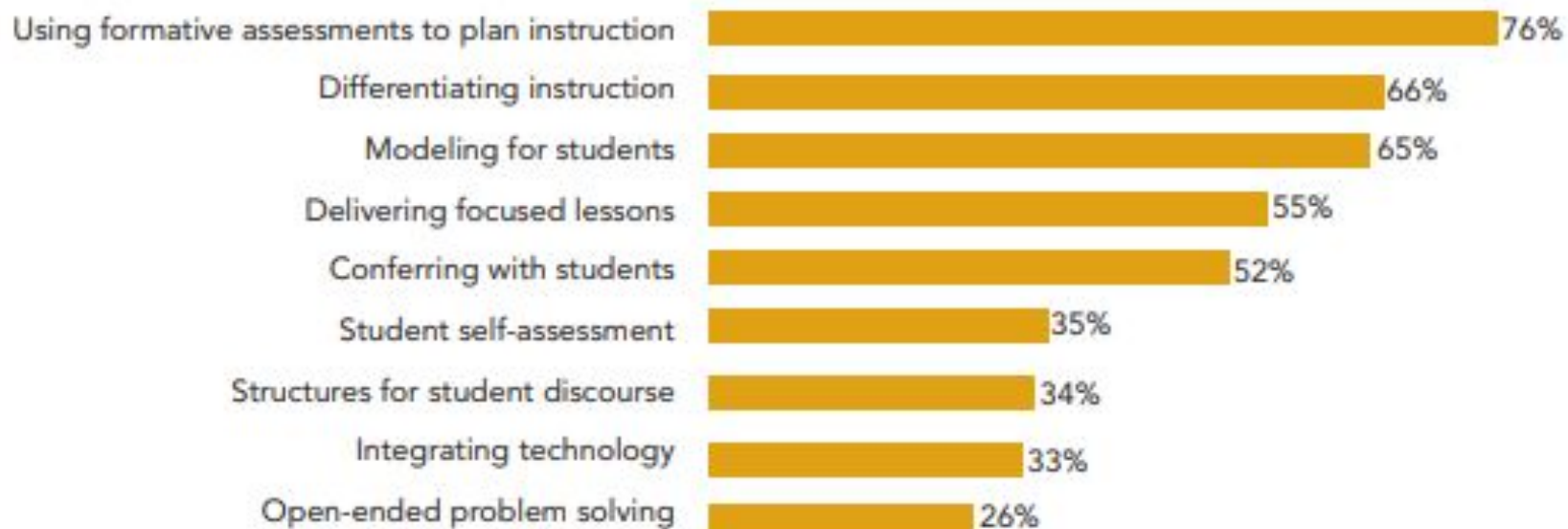
The Impact of

Student-Centered Coaching

STUDENT GROWTH ACROSS THE COACHING CYCLE



INSTRUCTIONAL PRACTICES IMPLEMENTED



COACHING PRACTICES USED



Data collected by KickUp, an independent K12 evaluation firm, from 87 coaches working with teachers from various content areas in years 2 and 3 of implementation of Student-Centered Coaching practices.

Key Messages

- Coaching is for everyone, not just certain people.
- We are a community of learners who take risks together.
- A coach's role is to support, not judge or evaluate others.
- The process is driven by choice and ownership by teachers.

End-of-Session Reflection

Create 5-6 belief statements that sum up your thoughts about coaching.

