

Major Scales

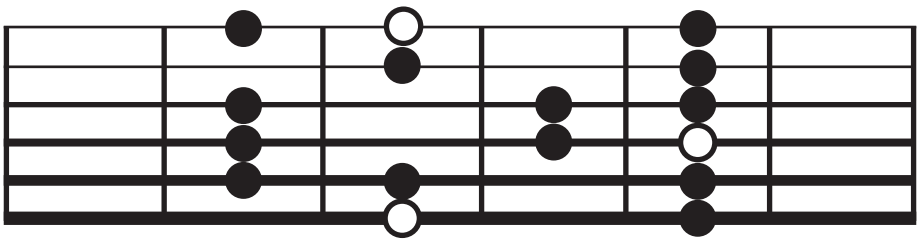
The major scale and its modes are the most frequently used melodic material in jazz improvisation. As most jazz standards and original jazz compositions are tonal compositions, their chord structures will be from major keys and therefore use modes from major keys. The major scale contains the following scale degree qualities.

ROOT
MAJOR 2ND
MAJOR 3RD
PERFECT 4TH
PERFECT 5TH
MAJOR 6TH
MAJOR 7TH

The fingerings which follow are 5 choices from a total of 12 vertical fingerings which exist on the guitar fingerboard. The chart indicates the position of the forms for each of the 12 keys. A position is defined as 1 fret below the second finger. Finger 2 is a better indicator as it rarely stretches out of position. Keep in mind as well that all of the major scale modes are contained within each of these 5 major scale fingerings.

MAJOR SCALE FORM 1

KEY (Major)	G	C	F	B \flat	E \flat	A \flat	D \flat	G \flat	B	E	A	D
KEY (Minor)	Em	Am	Dm	Gm	Cm	Fm	B \flat m	E \flat m	G \sharp m	C \sharp m	F \sharp m	Bm
Position	II	VII	XII	V	X	III	VIII	XIII	VI	XI	IV	IX



III

