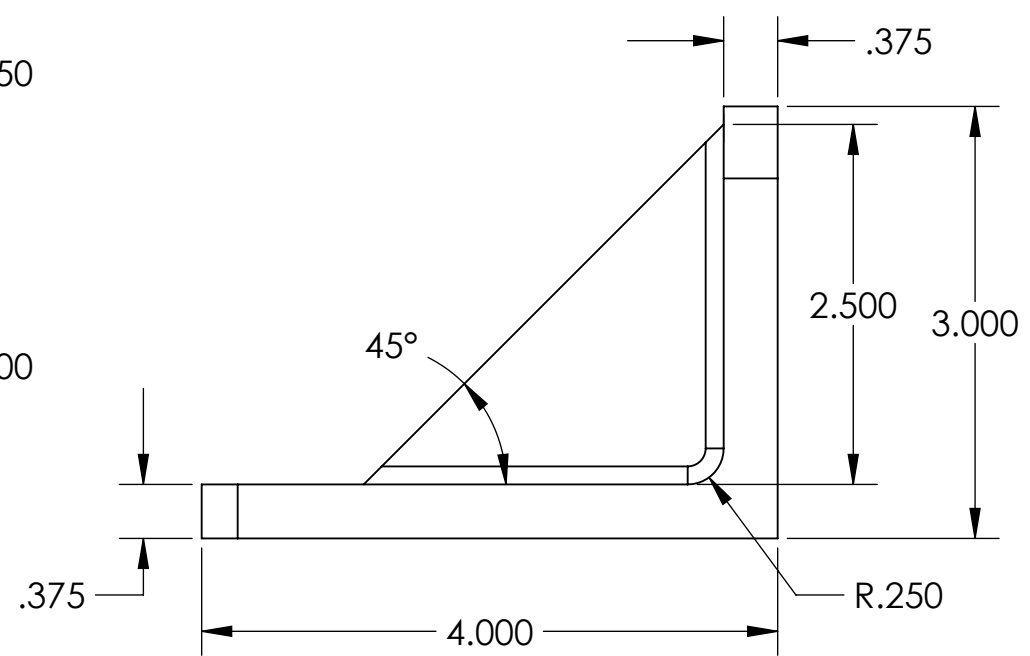
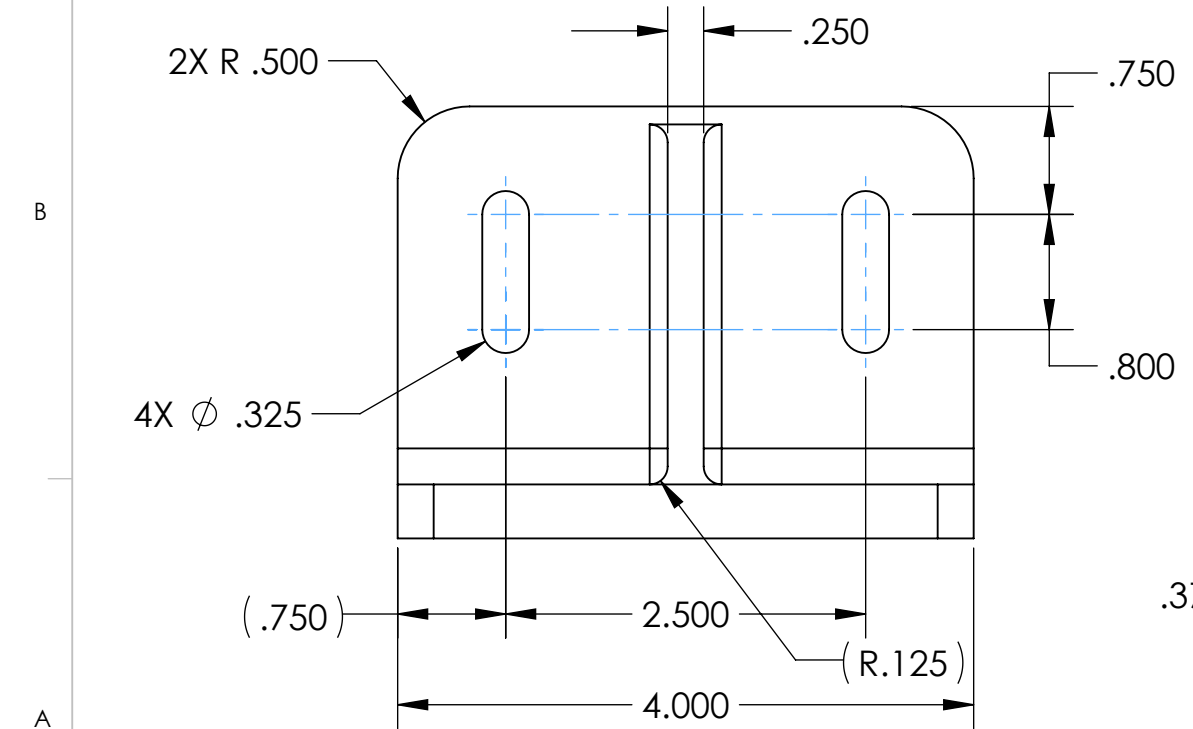
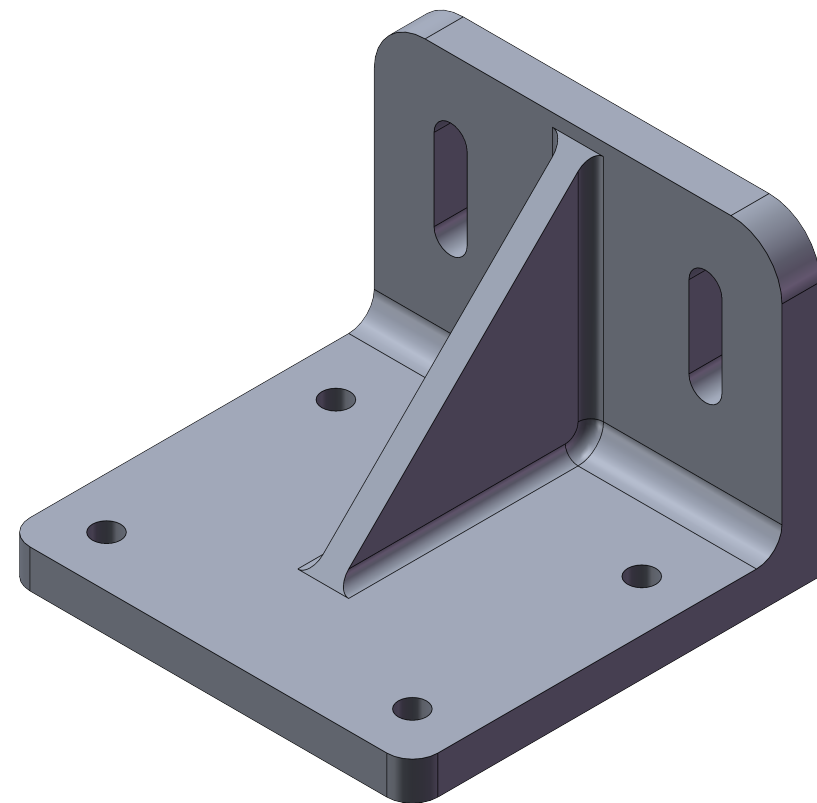
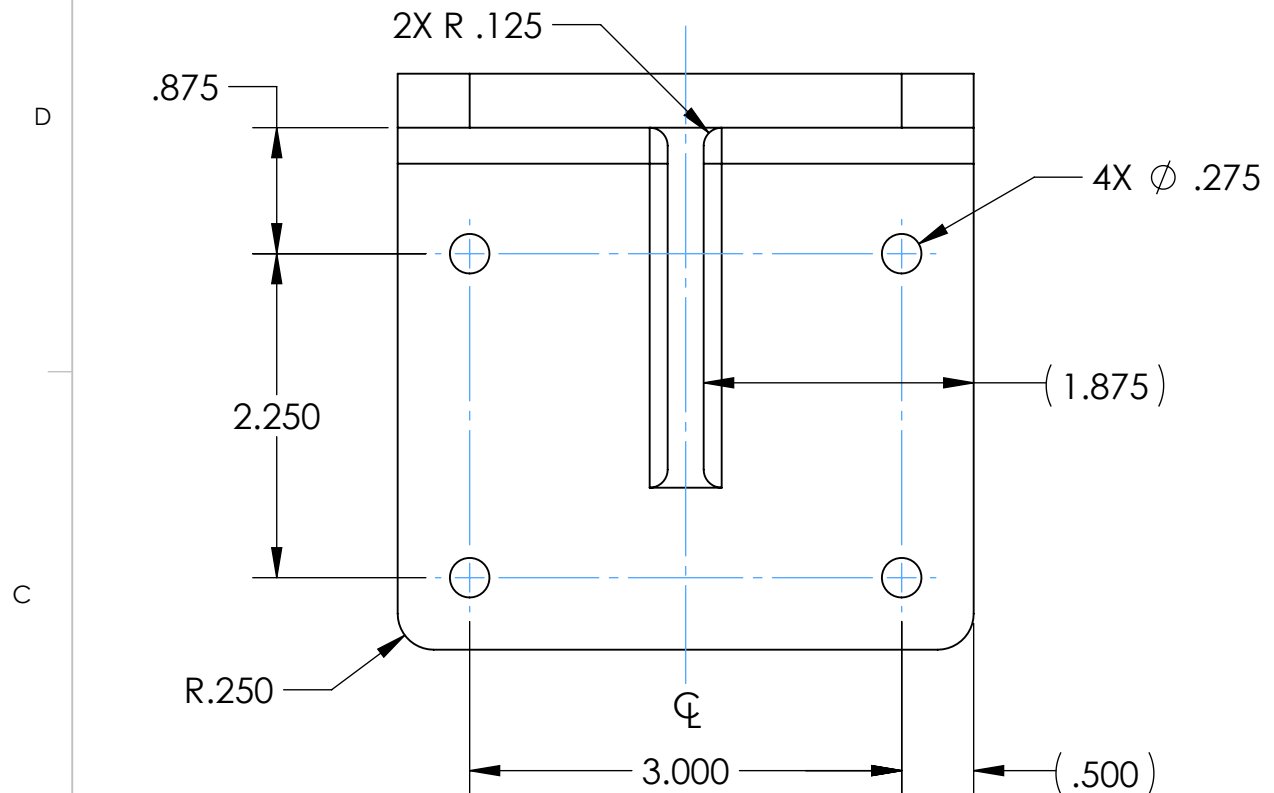
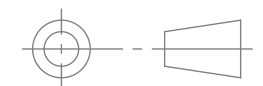


Model File Name: ATP-002




DIMENSIONS IN INCHES  
PART IS SYMMETRIC ABOUT  $\phi$

THIRD ANGLE PROJECTION



- NOTES:
1. DRAWING TO BE INTERPRETED IN ACCORDANCE WITH ASME Y14.5-2018
  2. MATERIAL: 356.0-T6 PERMANENT MOLD CAST (SS) ALUMINUM
  3. DENSITY: 2,680 kg/m<sup>3</sup>
  4. VOLUME: 10.405 CUBIC INCHES
  5. MASS: 1.007 LBS

 <b>Agile Academy</b> agile-academy.tech	
DO NOT SCALE PRINT TOLERANCES UNLESS OTHERWISE SPECIFIED .XX ± .01 .XXX ± .005 ANGLE ± 1°	
SIZE <b>B</b>	
DRAWN BY JEV	DRAWING NO. ATP-002
CHECKED BY JLM	SCALE: 3:4    DATE 1/4/2025    SHEET 1 OF 1