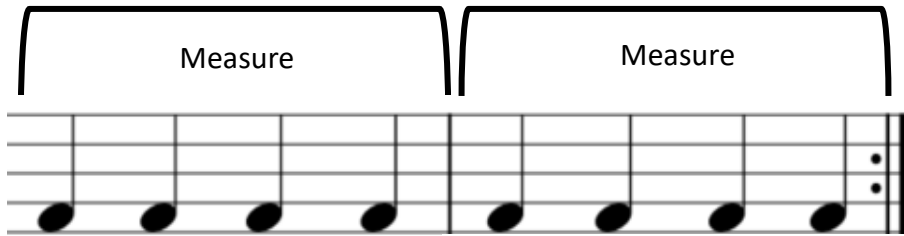


# MUSIC NOTATION

## Bar Lines, Measures, Repeat Signs and Double Bars

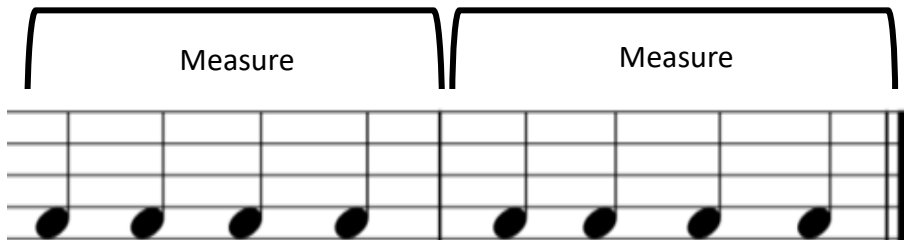
Copyright 2022

**Bar Lines** separate music into **Measures** of equal number of beats or counts.



Bar lines separate music into **MEASURES**

A **Repeat Sign** means to replay once from beginning



Bar lines separate music into **MEASURES**

A **Double Bar** is used at the end of the music

### EXERCISE

Draw bar lines after every 4 beats to separate the music into measures of 4 counts or beats

Draw a **REPEAT SIGN** here



Draw a **DOUBLE BAR** here

