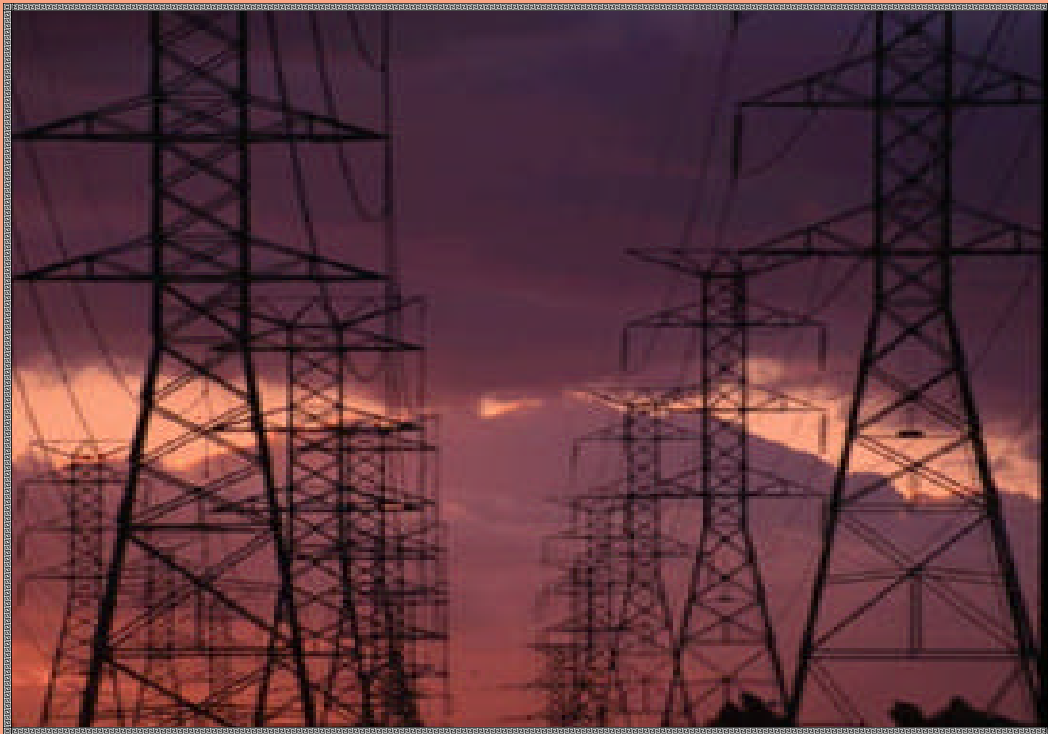


THE NEW MILLENNIUM NOTEBOOKS

LINES OF COMMUNICATION - PART I

Understanding Channeling



Neil Hickox

Excerpted from
The Chrysalis Teachings
by **Norma Hickox**

Electric Lines

by
Neil Hickox

These electric lines stretching off into the distance as far as the eye can see are exactly what our lines of communication with the spiritual world do. They stretch back as far as we are able to reach, even to the beginning of time.

A Profile

I am a professional musician. I play and teach six instruments and compose music. I've been an organist and choir director for many different religious denominations. I have also taught vocal music in private elementary and pre-schools and have had my own dance band in the past. I live with my husband Lyle in Grand Junction, Colorado. We have one son, Neil, a computer scientist living in California. Neil has done many of the drawings used in the teachings.



Norma Hickox

Photo by Neil Hickox

When I began composing in 1981, the music and lyrics would flow out in complete form. A year later, I began to receive information from a spiritual source that flowed the same way as the music. This new material was later explained to be from spiritual teachers whose intent is to bring the Chrysalis Teachings to human understanding. My individual part in the work is to act as a thought provoker; to bring through ideas that stretch our minds and break us out of the shells of old thinking; allowing us to wonder "What If." This work is in the realm of creative ideas, before inventions are made or new products are designed and opens the possibilities of new ways of doing things. For the last twenty years I've been working on the Science of Music. This science will tie everything that has existed since the time of the big bang until now, to a musical vibration for the purpose of finding compatibility between the different kingdoms.

I have been blessed with the privilege or gift of "knowing" many spiritual truths. It seems that some part of my makeup has the ability to "know" and "see" the aspects of creation in a way that relates to musical vibrations. Actually, being a musician, it was the vibrations of music that I've been exposed to since the age of four that enables me to do this.

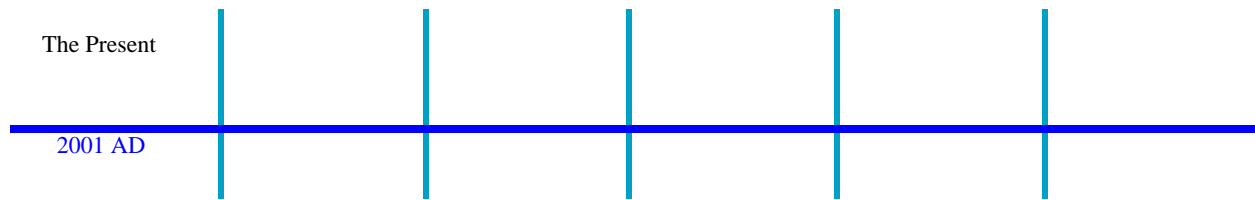
These notebooks enable us to look at any time period of the universe. They allow us to experience events that have happened in the past, events that are happening now, and events that will happen in the future. Each New Millennium NoteBook will take a look at a small portion of the TimeLine of Eternity.

I can be contacted via email: nhickox@bigfoot.com

Table of Contents

Part I - Lines of Communication - Understanding Channeling

Chapter 1 - Communication Between Kingdoms	1
Chapter 2 - Channeled Entities	20



CHAPTER ONE

Understanding Channeling

Introduction

The New Millennium Teachings can explain many things that are not clear to us even with all the other teachings we have at our disposal, including the Bible. The Bible is truly the Word of our Creator sent down through His communicators. The Chrysalis Teachings are also the Word of our Creator sent down through this particular communicator. The newer teachings are much clearer to understand as they do not have the misinterpretation of centuries-old communications and have not been through the translation from other languages. Also, they are being communicated from the unmanifested state by more highly evolved spiritual beings. It is my hope that these teachings will help many on their spiritual path and enable them to tie these teachings in with Biblical teachings.

Creation And Evolution Go Hand In Hand

The New Millennium Teachings are based on the fact that Creation and Evolution go hand in hand – that one cannot exist without the other. The mind of the Creator was given birth at original creation at the time of the “Big Bang.” The Creator was able to induce evolution to a point where the planets, suns and stars were also given birth. As each large piece of the Creator’s mind broke away from the original it took up residence and expressed through the planets, suns and stars.

The part of the Creator’s mind in residence in our galaxy eventually realized there was much more He could experience if He could become small enough to inhabit some of the animal forms that were developing according to evolution – which in reality is a scientific reaction to circumstances – on some of the planets He had made. He chose to experience more of life on one particular planet in one particular solar system, planet earth, because it had many different animal forms evolving on it. This piece of the Creator’s mind was a large, ungainly, awkward field of energy to try to explore this fascinating new planet with, so the decision was made to split His energy apart into small pieces and let each piece, or spark of His energy, explore on its own. This was done, and the sparks of the Creator (spirits) were able to enter the animal forms and learn to express through them.

In the beginning these sparks were whole sparks, male and female together until the sparks were split in half at the time of Atlantis, (the story of Adam and Eve). You see, the real meaning of the story of Adam and Eve had nothing whatsoever to do with the physical body. Because the phys-

ical forms had evolved into either male or female and the sparks (spirits) entering them were both male and female combined, the sparks were split into male and female, positive and negative energy, and only one half was allowed to incarnate into a physical form at any one time. The other half had to stay on the inner planes to guide the incarnation from there. The purpose, the plan, of earth plane existence was for each of these male and female halves, to learn, grow and experience and to synthesize their animal nature with their divine nature, so they could become a complete composite of both the Biological Kingdom and the Divine Kingdom, and a new kingdom, the Human Kingdom, was brought into existence. This was also the time when the restructuring of the chakras was done by closing some chakras and enhancing others and the new brain was brought into existence (the fall of man).

The Sparks Were Not Meant To Lose Contact With the Creator

Channeling is the mechanism by which the cycle of evolution is accomplished on the earth plane. When the Sparks entered the physical bodies it was never intended that they should lose contact with the main body of the Creator God that stayed in the higher realms. The plan was to always have open lines of communication. Channeling is part of the plan as it allows this communication to take place, from the Creator's mind to the mind of humans, to the Conglomerate Mind of the Micro Men (the Kingdom of God is Within) and back again to the Creator's mind. Therefore, channeling is a natural, normal stage of evolution for humanity, whose time has come.

Channeling is the voice of the spirit within each human being. The voice of the God Within, if you will. It is within each and everyone, let there be no mistake about it. As to whether it is reached or not depends on many things.

Anyone can do it. In fact, many already do channeling and have just accepted it as a part of themselves and never questioned where this inner voice came from. They are the ones who have already bonded with this inner part, or become synthesized (joined lower and higher selves) in other lifetimes. You will find them at a higher level of intelligence. This is what it's all about after all – achieving the higher mind, which simply will be seen as higher intelligence.

Channeling Different For All

Channeling takes many different forms with many different people. It won't always be as words being heard in your head or thought pictures. It could come just as thoughts. If this is the way a channel is developing it will be most likely be a vocal channel as opposed to a writing channel. This person will speak the thoughts. This is his form of channeling, instead of writing the thoughts. It is every bit as valid a channel as the written channel.

There are others who bring this channel through the arts, who channel inspiration from the higher realms into their paintings, into their music, and most definitely into theatrical performances. The making of a great actor is his ability to channel the thought processes of the character he is developing (this is a slightly different meaning of the term channeling). He actually gives birth to this character inside his mind and channels that through. This would be a form of "brain chan-

neling.” That kind of acting is in a category by itself. This does not apply to art and music. Art and music are simply a different language for expressing the thought pattern, the thought pictures that come through from the higher realms. One person will bring these through in writing, another in speaking, another in painting, another in music, another in dance, another in skating. Any of these arts – the movement, and the patterns, the colors and the harmonies – are all being channeled. When a writer writes the channeling, these are all there in the writing. As a matter of fact, if a channel were to write in different colors when at the computer, it would make the interpretation of the material easier.

Understanding Of Channeling Is Progressing

With the breakthrough into the understanding of channeling – which is part of our divine heritage – much progress forward has been made. The ability to do channeling was looked upon as witchcraft for many centuries, even to the point of “burning at the stake” those who did this. Do you realize the significant progress that has been achieved in the last few years? Can you imagine the reaction to a show such as Shirley Maclaine’s “Out On A Limb” even 15 or 20 years ago?

Thousands of years ago, only those with a highly evolved background could do this channeling. Thus they were, and rightly should have been, revered as teachers and prophets. But the level they reached with their channeling was not nearly as high a source as most today are capable of reaching. (When Master Jesus said, “What I do, you can do also,” could it have been channeling he was speaking of?)

There were not as many highly evolved souls in the other dimensions, at that time, to respond with intelligence. Therefore, some who could contact other dimensions did so with a lower level of evolved souls. As progress is made on the earth plane, so also in the “voice within” able to contact more intelligent thoughts and ideas.

We are in the early phase of this stage of evolution and many are able to open the channel in this lifetime. Some have opened it in previous lifetimes and many will open it in the following lifetime. Most children being born today will have the channel readily able to open with proper education. Herein lies the only control factor of this stage of evolution – education as to the proper use of the ability to channel. This is the ability to communicate with your inner being – the unseen parts of you that make up the total you.

The Trinity

The Kingdom of God is within and can be reached by channeling the trinity. The trinity that the churches have talked about for so long is made up of the large, all-encompassing mind of the Creator, (Father); the fragmented mind of humans, (Son); and the conglomerate mind of all we have ever been (the Micro Men) that is inside our mind (Holy Ghost). To explain further, The trinity consists of the entities own mind, which is his animal-based brain, infiltrated by thoughts from the divine spark. That’s one part of the trinity. The conglomerate mind is another part of the trinity. This consists of the teachers and guides – entities who have already crossed over and are further ahead on the path than we are – who have reached back to help. They are a living, human

being in the unmanifested state. You are a living, human being in the manifested state. This is two parts of the trinity. The third part is the divine mind, the Creator God.

The Macro Universe, the mind of the Creator, can only see the overview, is concerned with the total self and will evolve by expressing through the Human Universe.

The Human Universe must be self-centered, as far as its application of the teachings, until it grows to the point of fourth dimensional consciousness. Humans can only see the personal view and are concerned with the personal self.

The Micro Universe, the conglomerate mind, is not self-centered. It is working on drawing the Creator's kingdoms together in its application of the concepts. It must, of necessity, try to achieve oneness through the kingdoms. It realizes this more fully for having been through all the developmental stages. The conglomerate mind (the Micro Men) can see it all and are not the least concerned with self.

Macro Universe Channeling

The first stage of channeling (communication), as far as the Creator goes, was simply the blending of the crumbling rocks of the Geological Kingdom with each other and with water to produce a soil in which many different forms of the Botanical Kingdom could evolve. The presence of channeling in the Botanical Kingdom is documented by the many varieties of animals that evolved due to the mating of decomposing plants with water. The channeling in the Biological Kingdom is between each species of animals and also with humans. Those of one species will have a communion with each other that is not possible between different species, but there is still a sense of communication between all animals and all humans. They also feel a union with the Botanical Kingdom, which responds favorably to the Geological Kingdom.

Human Universe Channeling

There is a thread of communication between all kingdoms and the human can and does tap into this line of communication almost from the beginning of life. In the womb, he is operating on the theory of communication that was present in the Geological Kingdom. The process of birth itself represents the instinct present in the Botanical Kingdom and the sucking at the breast represents the communication available in the Biological Kingdom, which is also instinct. In other words, the functions of the human body are a combination of the three lower kingdoms. Present day physicians should study this statement in relation to the human digestive system.

Micro Universe Channeling

The process leading up to the Conglomerate or Micro stage of evolution is long and complicated. The beginning of this stage is the mission that our Master Teacher Jesus came to the earth plane to accomplish – the Kingdom of God is within. Each human needs to learn about their divine heritage – which is the creative channel – and about the ultimate goal of using this channel, which is reaching the trinity, (the Kingdom of God is within). Reaching the trinity is having the ability to channel from three areas simultaneously, the mind of the Creator (Father), our own

past incarnations (Son), and the Micro Mind, the teachers and guides (Holy Ghost). This then is our God Within.

Instinct Refined To Intuition Will Open The Channel

As the human progresses he becomes more aware of a feeling of bonding with the different kingdoms at different stages of his growth. At the present time there is no precise order that this awareness progresses through, but it is all leading to the same point – that of instinct becoming refined to intuition. In the future, early schooling will focus on the ability to transmute instinct to intuition. The way to sharpen up the intuition is by interacting with other people and also with the animal and plant kingdoms. Intuition would be an opening of feeling as to what is going on within a plant, sensing, when looking at a plant, what shape or what condition it's in. Is it happy? Does it look sad? Is it undernourished? Is it not loved? Then moving on to the animal, even greater communication is possible. Intuition is a feeling of knowing what a certain animal is all about – how they will react to each situation, depending on their state of physical health at the time. Animals will have the ability to help teach children in the future, as this will be learned and practiced with the animals first. After a sensing of animals, the human will begin to apply this ability to his fellow humans. This is the beginning of becoming intuitive, which is a forerunner of more in-depth channeling. All this is to sharpen your intuition, not your instinct. Your instinct is a natural, inborn quality that you have, you don't have to sharpen it. It was a gift and it's the instinct that you're transmuting into intuition. Working with plants, animals, and humans, not necessarily in that order, but with all three, will help with the breakthrough into transmuting this intuition into actual channeling.

Intuition Is Forerunner To Channeling

When one gets a subtle feeling, or some other subtle communication, this is intuition and is a forerunner of channeling. The intuition needs to be worked on and developed and will eventually turn into actual channeling. You can't say that intuition is a form of channeling but rather that it is a forerunner of the actual process of channeling. Intuition has grown out of instinct of the animal-based brain and is a sign of the beginning influence of the soul on the incarnation.

If you are beginning to get these subtle feelings or some other type of communication, but don't actually hear any words, mentally, or get any thought pictures, you have not moved past the stage of intuition. Rather than trying to force open the channel, you need to continue trying to sharpen up the intuition. This will automatically turn into channeling if it is accompanied by study on transmutation of attitudes by meditation processes and a true spiritual desire to be closer to your Creator. It should not be a desire to be able to channel like others who are doing it to gain fame or money and it also shouldn't be just because of all the excitement of doing it. All that will do would be to hold back the process. It must be a true, sincere, deep strong desire within you to be in touch with your Creator.

Arts Help With Heightened Sense Of Sight And Hearing

The process begins to follow a definite path at this time, in relationship to the use of the intuition. More use of the intuition will cause other factors of channeling to begin to come into place. A

sharpened sense of sight and hearing are two factors. This is one of the areas where the arts have a bearing on channeling. They cause an increased or heightened sense of both of these functions.

When the channel to the inner kingdom, the Micro Universe, is opened slowly through the creative arts, it is a much deeper and more dependable channel than an opening that is forced by quick methods. The entity will be much better prepared to handle the energy when it begins to come through if there is a slow opening. The vast amount of people today with mental aberrations will not be present in future generations if the opening of the channel is begun at birth or shortly thereafter through the creative arts. There is a well-defined path that will open the channel and needs to be begun as a child and carried through all education.

Humans Are Transformers Between Physical Matter and Ethereal Matter

Channeling is an absolutely normal function for human beings. Humans are the link between two different manifestations of the Creator's energy. There are three dimensions lower than the human and three higher. The first seven planets are used for these manifestations of energy. The merging of the lower and higher takes place in the middle kingdom, the Biological, on the middle planet of the seven, earth.

As the link between the lower and higher, channeling is of both spiritual and physical importance. It is the line of relationship running through all the kingdoms tying them together and is of a twofold nature. One aspect of it is ESP and intuition which is the natural link-up between kingdoms. The other aspect is the channeling that feeds into the human being from the higher dimensions. The total process is a function of the human form due to its having evolved through all kingdoms on its evolutionary journey, starting with the original Elemental Kingdom and working through the Geological, Botanical and Biological Kingdom.

The higher kingdoms are also a function of growth and evolution of the human, and eventually the return to the Elemental Kingdom will complete the divine circle and end yet another cycle. The human is the physical manifestation of all aspects of the Creator. It is the only kingdom able to encompass and function through all kingdoms simultaneously. It is a very rare and beautiful kingdom and is of spiritual importance to all universes due to its uniqueness; a marvelous handiwork of the Creator and a scientific research project of His that is still being perfected.

Balance Point For Humanity

The balance point for humanity is to be able to cross dimensions in thinking, speaking and acting in a second's time. The ability to change back and forth as the occasion demands is a point that very few reach. One needs to be as a compass needle that turns and moves with the exoteric stimuli that the form is being bombarded with. This would be comparable to perhaps a sensor on a thermostat that triggers a heating element on and off. This is difficult for those to see who cannot get a grasp on the overall views of humanity. When one is so enmeshed in his personal reality, his personality, he cannot sense himself as a cork bobbing on the water of a lake and needing to be guided to stay on course, or a ship that needs to be kept on course. There are many analo-

gies of what I'm trying to put across. Any one of them will do. The point is, you have this powerhouse to draw from as the occasion calls for, but the "heating element" cannot work if the sensing device controlling the thermostat is not operating. This sensing device in humans in the intuition.

The intuition is a conglomerate of many things. It consists of past experiences, not only of the present life, but from all incarnations. It consists of vibratory rate – the faster the vibration the more keen the intuition. It also consists of diet, which forms fat cells in the brain which hinder intuition from working. Exercise discipline in all areas of life.

Intuition is also a combination of emotional control, perception, interest in others. The list could go on and on. As given, it is a conglomerate that is advising your God Within, that tiny, tiny, voice of right and wrong. When you have a "gut" feeling about something, it is probably your intuition. Once this intuition is recognized and proven accurate by a person and thereafter is heeded in his daily life, this person has the necessary sensing device then to trigger the thermostat that starts the guidance correction system into its duties. This is in helping an individual know how to respond to certain situations. The whole process will be slow at first, but with use will become a smooth working process that kicks in and out as needed with help from whatever level of the mind is needed.

If one needs to be able to figure a complicated formula out for a math or science problem, the sensing device triggers the animal brain to call on help from the higher mind at probably level seven. If one is listening to a symphony orchestra needing to write a critical review for instance, the level of six will be called into play.

If one is weary and distraught over a situation and feeling very low, the triggering action would automatically take him to level ten, perhaps only momentarily, but enough to give him a glimmer of hope for the future. This would be the ideal way for humans to operate, but it is very difficult to pull it all together.

Any aids that affect the exoteric life for the better will make smoother sailing just by easing the difficult situations one finds oneself in. This is fine, but will not help the esoteric handling of problems. As stated before, quite often exoteric aids and exercises will hinder the esoteric growth pattern. This is why it is necessary to try to balance the outer help so it does not overstep the boundaries and take away lessons the soul needs to learn.

This happens many times when one goes to psychic for a "reading." The psychic gives information that the person should be searching himself for by meditation, regressions, dream analysis and studying his astro-numero chart. All this would have caused his mind to stretch and grow and start a tiny crack in his seed core. Instead, the knowledge is slapped at him from an exoteric angle (the psychic) and he gains nothing in the way of self-growth. Does this help explain why psychic readings should stop? Humanity will never get their sensing devices working to trigger the response mechanism as long as this practice is continued. This is very important and yes, one

must “swim against the tide” to take this stand, but it is a big stumbling block that is being put in the path of many. It is a crutch, it does a person no good as far as his growth and evolvement. Sure it’s fun; it’s fascinating, but shouldn’t people have some more serious things to spend their money on? They can speculate on “past lives” and “present day guides” etc. by having a once a year fun party to this effect, but for heaven’s sake do not use this stuff seriously. What good can be gained? Whatever a person is told by a psychic can be found out by the person himself with a little hard work. It is just laziness to go to another.

The results of those who are constantly going to readers do not help. The person usually regress in that lifetime. If they let their own guides help them, they would re-experienced some events that would make an impression on them. Being told something from someone else does not put a dent in the mind of the person whatsoever. The goal of the New Millennium to eliminate these “psychic readers” and have in their place “counselors” who use a number of methods to open a person’s own seed core. The psychics doing readings have stopped their own climb thinking they have reached the ultimate way to serve humanity. This is as wrong in one direction as the churches are in the other direction. The middle path is balance and it is very difficult to find and keep this balance to stay on the middle path as a well-balanced human being on his upward climb to becoming a divine being.

Alpha And Beta Waves

There is a distinct difference in channels because channeling is based on a mathematical, progression of absolute perfection. When the channel first opens it must work its way up through the manifested ways of channeling to the unmanifested ways. The first way involves psychic phenomena or mind to mind phenomena, not only human to human, but also human to animal (Biological Kingdom), human to plant, (Botanical Kingdom) and human to mineral (Geological Kingdom.) The second way is mind to mind phenomena, human to Prismatic Kingdom, human to Atmospheric Kingdom and human to Astronomical Kingdom.

The channels that use beta waves are the lower kingdom channels. These waves are radiations of the animal-based brain and radiate upward from the lower kingdoms. Those who use alpha waves are the higher kingdom channels. These waves are radiations of the Divine Mind and radiate downward from the higher kingdoms. Both manifest in the human being. A channel will work from the one state into the next if they continue growing and evolving and raising their consciousness.

The channel begins with mere instinctive actions until awakened by the kingdom ahead of it as to its purpose and ultimate goal. This instinct is responsible for the crumbling of the rocks forming soil that allows the growth and progress of the Botanical Kingdom. The Botanical Kingdom knows instinctively that it will form lower animal forms when it disintegrates, leading to and obliging the Biological Kingdom. The Animal part of the Biological Kingdom instinctively knows that it is to help the Human part of the Biological Kingdom as workers. they will provide food in many different ways from the honey bee to the horses used for plowing or manure used for fertilizer.

The Human part of the Biological Kingdom has the ability to draw on all this instinct and turn it into intuition and be able to “tune in” to all these kingdoms plus their fellow human beings. The human then takes this intuition and hones it to a degree by tuning up his vibrations musically and allowing a transcendence or blending of beta and alpha waves to take place. This is the period of psychic phenomena that all go through, must go through, to be able then to draw in the higher energy, that of using the alpha waves. These waves then must be constantly and continuously honed and refined to draw ever high kingdoms down to them. These higher kingdoms help by sending these waves down as far as they are capable. Channeling the higher energies is a two way process as the higher energies can only be sent down so far with any force. Then the human must strive and reach up to them. The two different energies can be thought of as the broad band radio waves and the narrow band, involuted radio waves.

Steps On Path and Points Of Contact With Channel

First Step - No Contact With Channel

The first crack in a person’s seed core is the most important, because this must take place before any other steps can follow. It takes different forms for some than others. In some it is precipitated by an accident to the physical body. In others it is brought on quickly by a mental blow of some sort – a divorce, loss of a loved one, loss of a job, betrayal by a friend, etc. In others it is a long slow process of deterioration, not only of the physical body, but also of the mental boredom that triggers the crack in the seed core as a life-saving maneuver, instigated by a person’s own soul. This first step has no other duty but is the most important.

Then comes a quickening in the thinking processes, including the emergence of a stronger curiosity about life in general. This involves much activity in a person’s conscience – which is the first stage of raising your consciousness or awareness – of what has transpired in your life thus far, especially in your relationships with other people. You are, by now, well into your spiritual search. Next, you find yourself involved in a furious seeking of information through any means available – books, lectures, classes, audio and video cassettes, other people, etc. When you have exhausted all these outer sources, this will be the true beginning of your inner search. With no concrete answers that you can fully accept, disappointment with other’s ideas and viewpoints, and having exhausted most available reading material, you will finally turn to yourself in seeking your answers– to the first place you should have looked to start with – your own university inside yourself.

The Second Step - No Contact With Channel

This study in your own university will take many different forms – meditation, reflection, regression and expression. Meditation is just sitting quietly and listening to the little voice within you. Reflection should be done before you drop off to sleep, reviewing the day’s events. Another step would be just plain study on all phases of the search that interests you and drawing conclusions as to what you feel are truths for you and those that you are questioning, plus the continued deep searching of your own attitudes.

LEFT BRAIN	APEX OF MIND	RIGHT BRAIN
Planet #12 Uranus	Still being formed 12th Dimension	Very few here Musical tone-B Color-White 12th mind level
Planet #11 Neptune	Still being formed 11th Dimension	Very few here Musical tone-A#,Bb Color-Lavender 11th mind level
Planet #10 Io	Experimental <u>3rd part of Trinity opens</u> 10th Dimension	Synthesization Musical tone A Color-Magenta 10th mind level
Plan experiments Musical tone-G#,Ab Color-Purple 9th mind level	Seedcores joined 9th Dimension	Planet #9 Scorpio
Synthesize wisdom Musical tone-G Color-Blue 8th mind level	Seedcores alone 8th Dimension	Planet #8 Pluto
Mind & Soul joined Musical tone-F#,Gb Color Aqua 7th mind level	Teach <u>2nd part of Trinity opens</u> 7th Dimension	Planet #7 Venus
Planet #6 Sirius	Twin Souls alone 6th Dimension	Plan teaching Musical tone-F Color-Green 6th mind level
Planet #5 Saturn	Twin Souls joined 5th Dimension	Healing Musical tone-E Color-Yellow 5th mind level
Planet #4 Earth	Sparks separated <u>1st part of Trinity opens</u> 4th Dimension	Heal conflict Musical tone-D#,Eb Color-Peach 4th mind level
Duality Musical tone-D Color-Orange 3rd mind level	Astral Plane waiting to reincarnate 3rd Dimension	Planet #3 Mars
Environment Heritage Musical tone-G#,Db Color-Red/Orange 2nd mind level	No contact 2nd Dimension	Planet #2 Jupiter
Genetic Heritage Musical tone-C Color-Red 1st mind level	No contact 1st Dimension	Planet #1 Mercury
	MICRO UNIVERSE	

Study in one's own university should also be through expressing, creatively, some of your inner ideas. This is one of the first steps to finding the God Within, but a very important step and must take place before any more progress can begin. This wanting to express outwardly what one feels to be true inwardly is a step towards the goal for humanity – reaching your inner being.

The search, the course of each university – the major subjects, are attitudes and human relationships with the ultimate goal being the brotherhood of man. The one precept that each university needs to be based on – must be based on – is “DO UNTO OTHERS AS YOU WOULD HAVE THEM DO UNTO YOU.” All the other paths that people get stuck on are only minor courses of study in their university and only serve to delay their graduation with a degree in attitudes – the science of facing one's self truthfully. Because each has free will to set his own pace of growth in his own university, he can dally and tarry all he wants. After all, he is not only the student, but also the teacher and the administrator of the testing needed to progress on.

Third Plane Contact - Astral Plane Contact

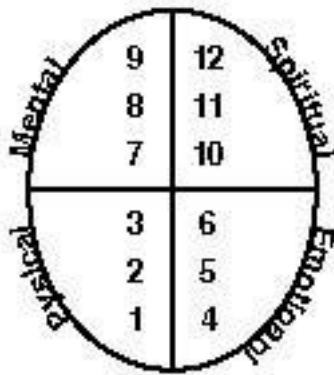
The astral plane is the part of the path that is the reason the churches are so against the inner contact, or channeling. No one understood this astral plane and it was thought that delving into the inner life caused one to go mad and that it was satanic and the work of the devil. It was forbidden and discouraged and all growth towards truly finding their inner being, The Kingdom of God is Within, was stunted.

It must be explained here that the astral plane is backwards from the earth's twelve planes because it is a reflection. The first point of contact will be level twelve. Many reach this high level to begin with due to higher educational opportunities of life. This then sometimes traps a person into continuing up the fountain of knowledge and just learning facts for facts sake. If they are psychic they contact someone of like mind who traps them on the first point of contact, the highest level. They never really make any true progress as to finding and expressing the God Within until they regress. This is so hard to understand, and is possibly what Jesus meant when He said “Ye must come to me as little children.” The person must continue climbing the astral plane, which is going backwards from level twelve to level three until he breaks free to the fourth plane where inner “spacemen,” accredited teachers and guides, are waiting to help him, and most often do pull him through the traps of the astral plane. Then these teachers and guides can guide and direct him and help him find his God Within and this person learns to express it through every action of his life.

Those in the higher planes are so very grateful to finally be able to explain this to humanity by the grace of a few brave souls willing to put this information out there. The process is becoming easier for people just beginning to channel, because it was not truly understood before. The inner plane guides and teachers are now able to help more people as they further their understanding.

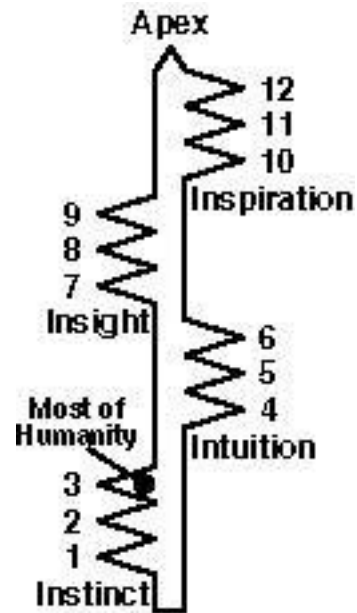
Those entities on planes one and two of the astral plane will be offered tiny glimpses of light periodically. This is the “hell” that has been erroneously described by ministers. There are those in incarnation on the earth who are in this “hell” on the inner planes at night. They should not be there and should be educated as much as possible as to this fact. Most who are at a low level three

consciousness in their waking hours will go to these levels on the astral plane at night almost uncontrollably. These are “nightmares.” At times those of higher consciousness will be taken to these lower planes for a guided tour by an inner plane teacher.



The Brain

Neil Hickox



The Channel

Neil Hickox

The ones who go there at night from daily lives (nightmares) bring back evil, dark thoughts they have found in those lower vibrations of the astral plane. It is very dangerous and they get “locked” into these thoughts. The entities in these levels are not mentally ill, they are very slow – dull-witted. When they pass over some of them can be raised out of these consciousness levels and allowed to reenter a body at a low third dimensional consciousness level again, but some cannot and need to stay on these lower levels for eons before they “get the message” and are allowed to try again. This accounts for those on the earth plane of very low I.Q. Those who are mentally ill are those who entered into incarnation at a low third degree consciousness and drop into the lower levels at night. This distinction needs to be furthered by those working with mentally impaired.

When a person first starts breaking through into the second mind section, that of level four of the lower right section, he meets the higher dimension of the astral plane as the first point of contact. He must then work through the twelve levels of this astral plane backwards. This is waking meditation contact, not sleep at night contact. As he works backwards from twelve he eventually reaches level three where his twin (actually a low octave reflection of the twin at the higher levels) was stationed at the time of incarnation (when the sparks were separated into male and female and one half was left out of incarnation; this is referred to as the twin), holding that knowledge from former incarnations which was not needed in this incarnation. This is a difficult time for him as low level entities will give him information that is evil and frightening and false. This is why

the churches call it the work of the devil or Satan. The person's twin will try to counteract this, but it is still a very difficult time. Most people give up the channeling at this point but they really need to persevere.

Fourth Plane Contact - Inner "Spacemen" - Teachers And Guides

When you reach this point and persevere you will have a "breakthrough" totally into the fourth dimension, and contact the true record of growth accomplished by the whole spark. This is the twin, an octave higher, holding the documentary of positive lifetimes. This is when past life regressions will be of benefit, reading or viewing certain lives chosen by this octave higher whole reflection of the spark. This is a very confusing time for the aspirant, but not necessarily a frightening time.

Next would then be contact with the teachers and guides. When you first start tapping into the channel, these teachers and guides are going to be past incarnations of yours. Even though they're further ahead than you they may not be as intelligent as you. They have been through the earth plane experience and have moved on up and know what it's like up there, but they may not be as over-all knowledgeable as you, because the progress made on the earth plane as far as daily activities, daily life, has been quite phenomenal. For instance, you have dishwashers, televisions and many other appliances that these entities up there have never experienced in the manifested form. They know of them, but they have never truly worked with them. They've watched people work with them. In other words, you have more down to earth, so to speak, experience with a lot of this stuff that has to do with your everyday life. Therefore, the channel should not be used exclusively for your daily lives. The teachers and guides will give some help because they have an overview. They can see, maybe, what would be a good direction for you to go in your job, or something like that, but you can't nail them down to nitty-gritty little everyday items, because they are not going to be as qualified to make some of those decisions as you are.

Inner "spacemen" are the guides and teachers that inhabit any of the planets in our solar system. Their duties are to help those on our planet understand their heritage as far as the lesson plan for our solar system. This includes finding the God Within yourself that must be found before progress can go past the earth plane. Contacting this fountain of knowledge inside each is sometimes referred to as the creative stream. For some this is as far as they go, but they do progress up this path to where they are extremely excellent at expressing their inner being through their creative art, whatever it may be. They reach their God Within through this method. The same way that just getting the reflection and meditation period ingrained into your daily schedule was a little tiny baby step, this, then, is a much larger step and a much more concrete, good step. You will know when you have accomplished this and that is the time for a celebration, a very personal celebration. You should treat yourself to something you have been wanting for a long, long time when this happens.

Fifth Plane Contact - Twin Soul

This stage of growth is very quickly passed through and as you climb the twelve divisions of level five, you come more in tune with your twin and eventually join in soul and body coopera-

tion. In other words, your octave higher twin reflection, (the soul), begins to be able to influence your daily life with good, positive thoughts. You then merge with the oversoul (which is the mind of the Creator) on the true fifth dimension, the ethereal realm of five for a healing that manifests itself on the earth plane as a happy, loving part of the all, a feeling of being one with the Creator and loving everyone and everything. This is where most people stop their growth. They believe they have perfected themselves and quit. This is the “heaven” that the churches teach is our goal.

Sixth Plane Contact - Outer “Spacemen” - Teachers And Guides

But if one perseveres again he will enter the sixth plane. This is usually caused by frustration after realizing that the feeling of oneness wasn't quite as fulfilling as you thought. It depends on the level or tone you entered on as to whether you are still reviewing or if you are investigating new territory for you. No matter, you find yourself going off alone, leaving those with whom, shortly before, you felt so much communion with – be it study groups, cults, churches or whatever, and exploring all kinds of new ideas for you. You don't need to have anyone else because you and your twin are one by this time and you feel very whole when alone and very secure in your spiritual understanding.

Each one will have their turn at the fountain inside them. What they do with it is what determines the growth period for that lifetime. Their turn at the fountain, this contact with the inner plane guides and teachers, will last for a period of years. The entity will become stabilized, will become loving and will become a server of humanity. For others the path takes a different turn. At this point those who are psychically attuned will make contact with “outer spacemen.”

Outer “spacemen” are those entities from planets outside our own solar system. Contact made with them will delay your approach to the ultimate goal, that of reaching your God Within and externalizing the Hierarchy, as the Hierarchy is of our solar system. Outer “spacemen” can help you gain much knowledge and perhaps enable you to write science fiction that is close to actual true facts as far as the overall universe goes, but will not help you reach the God Within. Perhaps you will spend years in this field before you grow tired of it and wonder what good it's doing you when your everyday life starts falling apart around you because of your actions. Then you trigger a response that your teacher has been looking for that allows him to step in and reset your guidance controls.

You, as a whole being and by now a very intelligent, thinking and reasoning being, begin to wonder if this or if that were to take place what would the result be. You experiment, refine, plan and suddenly you need to discuss these ideas with others and find yourself wanting to share what you have learned.

Seventh Plane Contact - Teaching Groups

This will then move you to the seventh plane where you begin to work towards being a teacher yourself. This applies both exoterically and esoterically from plane six on. Up until that time there was a division between exoteric and esoteric life, but not from plane six on. There is harmony and oneness as the whole spark. Now this is not total synthesization because that cannot happen until

the higher planes where the next convolution into your seedcore takes place.

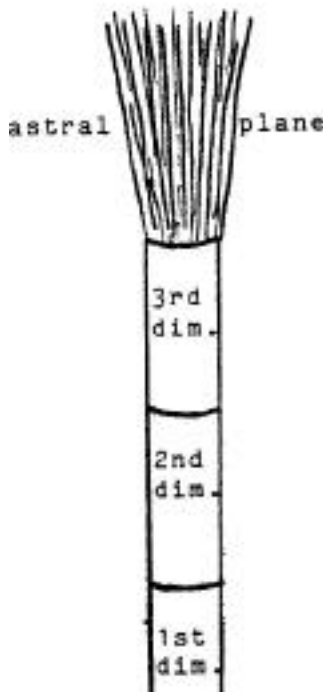
The Fountain Or Rings Of Energy Inside Each

The rings of energy, the Divine Mind, I'm going to give a name once and for all – from here on it will be called the fountain. The layers or steps of this fountain, relate exactly to the levels of the mind. When people first start tapping in, it will be messages from dead relatives. This is level 3, and they move on up from there. The entity named Jesus was at level 4 when he was crucified.

This is usually the first stage of our 12 stage fountain that the beginning psychic taps into. Jesus Sananda, is no longer there, but His akashic records are. He progressed on up the stages of the fountain and left records at each stage. When you continue on up in your inner spiral, you no longer contact that particular entity's records. What you do contact is the records of the entities who carried the spiritual banner at that particular time in the history of the planet.



The fountain inside you will be as a living history book, if you will, and can be used as such in your quest for knowledge of all kinds. The wisdom you must earn yourself. You can study either exoterically or esoterically and both ways at the same time, which would be using your divine heritage to the fullest.



Whatever a person is curious about, whatever he questions in his mind is what he will receive, because instead of “the fingers doing the walking through the yellow pages,” the soul traverses the fountain and plugs into what the mind says it wants or needs to know. This should help bring home the fact that thoughts are things. The more control the soul has and the more contact established with it, the more profound information it will search for.

Rings Of Energy Extending Up To Higher Planes

Picture a pipe in the ground standing up as high as you can reach with pressurized air coming out of it. On top of this pipe, floating on the air are many rings (flying saucers) or picture them as frisbees, if you will. Between the pipe and the lowest frisbee is a space consisting of just air, strong enough to support your heavy body. This is the astral zone that we have discussed previously.

Neil Hickox

The Planes

The further up towards the bottom frisbee, (level one of planet four) you go, the less air pressure to hold you steady

until you reach the security of the lowest frisbee or plane four. As the fourth dimension has not many in it at present, you speed right up through it. You may linger long enough to get a glimpse of the next stage of fourth dimensional life, but there are none there to hold on to you. (Please keep in mind that I'm talking of your contact through your inner self.) This changes when you reach level one of planet five. Here you find your twin soul and can contact him easily. He is your guide, remember, for this incarnation and your progress then of being able to contact this ring of energy, this beam of holy spirit, if you will, is much easier from now on.

A computer must be programmed, remember, before it can do its seemingly miraculous work. Anyone wishing to perform miracles as did Jesus, has only to desire this strongly enough to be able to direct the soul to tap into that exact level on the fountain. Anyone wondering about the pyramids, etc. needs to contact that exact level. Those that need to have verification of what they believe and desire it strongly enough for self-confidence will tap into the fountain at the exact level that is right for them.

So you see, not only does the personality need to have the guidance of the soul, (in other words, the animal brain needs to have the divine spark,) but also the soul needs to have the guidance of the personality, (the divine spark needs to be guided by the animal brain,) for the knowledge required to perform in today's world. Those who let the soul take total and complete control are not balanced. This is why opening chakras too soon is dangerous. Too much meditation is also dangerous as it keeps you in the day-dream state and not using your own intelligent mind.

Balance is the answer in all things. If you sit around all day thinking of colored lights and "is my teacher trying to contact me?" etc., you are a candidate for alzheimers disease. Use your brain cells for goodness sake, if for nothing more than to figure out how to run a house more efficiently or what would be a better way to plant a garden. For heavens sakes, just to "build a better mouse trap" if you will, will keep the animal brain cells in use. This is why creative, artistic, releases are so valuable.

Some people have trouble expressing emotions along with a lot of other people. We said expressing, not feeling. People sometimes feel these emotions, but fear to express them verbally. You don't need to express them verbally, but you can put them into some form of artistic release.

Everyone is an artist of some sort. This is where the fountain comes in. You can use it to learn any new art form or to pull up from underground any art form you have learned from previous lives. Yes, this fountain must be pictured as the underground pipes being your previous incarnations. The water collecting at the base is your present life and as you go up each level or layer of that fountain, it becomes narrower and higher.

Fountain Of Knowledge also Fountain Of Youth

The fountain of knowledge that is inside each human being is also the fountain of youth. That was known in the Atlantean age and tales of it persisted clear through until the present day, because there was a school with a series of classes in the Atlantean days that was attended by all and it

was known as the Fountain of Youth. The Atlanteans were a very, very advanced civilization, beyond what you are capable of now on the earth plane, due to limitations which have been imposed from the higher dimensions, to slow the progress that did go the wrong direction in Atlantis. There is a method of braking controls in place now so that progress goes the right direction, because once the knowledge and enlightenment begins to come in it begins very swiftly to affect all. This is what happened in Atlantis. There were no controls in that time period to slow and correctly direct the energy and the power that the Atlantians learned to tap into and then to misuse eventually.

Rings Of Energy - Planets In Our Solar System

The fountain that is inside everyone, the “rings of energy,” the planets in our solar system, all have something different to offer each one that contacts them. There will be 12 levels of each planet (plane) on that beam of holy spirit inside you. Your ability to tap in is in direct relationship to your standing in evolution and your willingness to work on your attitudes and your willingness to search for answers from a deeper part of yourself than just the concrete mind, the animal brain, if you will. Humans certainly have far more available to them than they are taking advantage of.

To try and explain more fully, please picture the large physical bodies of the planets you see in the sky, as space ships or rather space stations, as that is what they are, even our home station earth. There are no true universes in our particular solar system, none that are manifested eternally in time and space. They are all satellites, if you will, or “space stations” or “space ships.” Each one is a base for one of the spirit sons in the intermediate universe – pieces of the Creator’s mind that broke off at the time of the “big bang.”

The Process Of Channeling Is Your Spiritual Journey

After working through the astral plane, the process of channeling – which is our esoteric or spiritual journey – works its way up through twelve dimensions hand in hand with our exoteric, physical growth through the twelve dimensions of the brain. There is no contact available with the first two levels or dimensions as they have been closed off to humanity. Therefore, after skipping levels one and two and working through level three and then the astral plane, our first breakthrough into the second mind section, the lower right side of the brain, is made. This is where true esoteric contact begins. What has come before this has been psychic phenomena contact.

Your guide (twin soul) and you quickly progress through all levels on planet five and become thoroughly familiar with all the implications of being whole again. It is at this point that your soul and personality begin working together. After this contact is made most people stop their progress. They are happy with themselves and their relationship with others and feel that they have reached a goal. The contact with plane five, through your guide, reaching your twin, has such a beautiful, complete, whole feeling that most feel content and live out that incarnation with no more struggle or growth and no further steps on the ladder of evolution.

Those who do go on are usually put under pressure to do so by their united seed-core, their teacher, who makes them aware of goals set before entry. You see, the two of you planned the

progress for that incarnation and then, perhaps due to weakness in either half of the seed-core, neither progress any further until the next incarnation. But if both halves of the divine spark are strong, then more progress will come.

Contact is continued to planet six where you, as a whole spark, plan the next stage of lessons and things you want to accomplish, (perhaps you decide you want to return to college or something, to relate this to earth plane life). As you continue and move on to planet seven, you realize you need to do something to help others.

Also, from level one of planet five on you can reach records of other incarnations that you have had. Even though the last time you were there was from a less evolved pass of the oversoul, you can still tap into the records. For instance, if you had been an artist, you'll suddenly find the doodling you do while talking on the phone becoming very good drawings, much to your surprise. Your guide, your twin will encourage you to explore this area a little further. Or perhaps you had been a lumberjack and had been killed by a falling tree. You might also tap into this memory, but your guide will try to steer you away from this unless he thinks that reliving this experience will help you in some way this time.

Remember that your guide (twin) who is in touch with you is at the same time receiving help and guidance from those ahead of him. Also, please keep in mind through all this, that the help from those above is from space ships. Your guide, your twin, is inside you, your higher mind which you reach at level five consciousness. His help and guidance most likely comes from levels six and seven, and when you reach those levels your help comes from even higher.

The pattern world for earth is, or should I say, earth is a copy of and a satellite station for the planet Divington of the Paradise Isles. The only way they have of contacting those on earth is by transmissions such as I am engaged in or by coming down in their smaller ships from their mother ship or satellite or space station.

To recap, the first contact humanity has is with the astral plane which is above our planet, extending for miles between our manifested plane and the ethereal body of our planet, which is above the astral plane. You have the ability to contact those above you on the earth's twelve planes ascending, either with a physical plane teacher, or an inner plane guide if no physical teacher is available.

When you have reached beyond the twelfth plane of the earth's ascending twelve planes, your continued contact is with the twelve levels of the astral plane starting with the twelfth. You work your way up through those twelve levels, which are backwards. Therefore, the higher you go, the less evolved the contacts you make and this is the really dangerous period for all humanity. This is the area that scares most people off. This is the area that frightens the churches. This is a problem.

Humanity needs to be educated about this area, warned of it, and therefore by being made aware,

they can, by using their intelligent mind, make sure they do not get caught on this plane by devils manipulating souls who are waiting there and studying before reentering manifestation.

Now, whatever level of advancement you are working on (most are on level three or perhaps some are on four) you can safely be in contact with this pole, the beam inside you as follows: We will use a person of level four advancement as an example.

They can contact level:

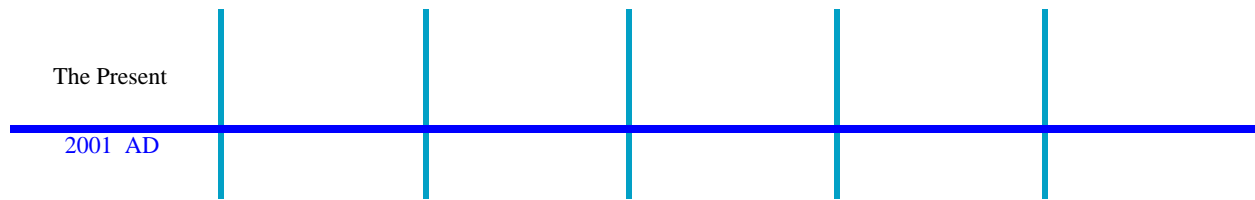
- 5
- 6
- 7
- 8
- 9
- 10
- 11
- 12 of the earth plane

Then they reach level:

- 12 of the astral plane
- 11
- 10
- 9
- 8
- 7
- 6
- 5
- 4

A person can even contact level four and still be safe, although you will not learn anything more than you already know. Levels one and two are not permitted much freedom, so will not be much of a problem. Therefore, your main danger area lies in the third level of the astral plane, the inner plane. Here you will find relatives and friends who were at this level when incarnated on the earth plane and they will try to cling to you and hold you there. Also, here you will find religious fanatics who will press their view on you of the crucified Christ that was the extent of their progress on earth. When you finally break free of this zone, you reach those on level one of the fourth dimension on up to twelve and then on up to planet (plane) five, levels one through twelve; then planets 6-7-8-9-10-11 and 12. Twelve levels of each. Level twelve is where the entity giving this material just was. This entity is now on level one of the ethereal body of twelve. After many more years of teaching from here, he will move on to the next solar system.

The rings of energy start at level one, planet five. Anything you reach up to that point was not from a ring of energy. It was from levels on a pole of energy.



CHAPTER TWO

Channeled Entities

Your Third Eye Is Your Power Converter

Yes, those contacting me are in space ships coming from their mother ship and trying to reach into the higher minds of individuals. This is why we see them with our higher mind through our third eye. Our third eye is our “power converter,” so to speak. It converts their energy into our dimension, so that they may be seen. They are the ones that can give the best guidance to our “guide,” our twin, our higher mind.

The space ships we see with our own eyes are not from our solar system and will not give help that is going to help the individual. They are of a lower vibrations, those we can see without using our “power converter.” They are not dangerous or mean or to be feared, they just are not able to contact us through our inner being to be able to guide us that way. They can give information that is startling and scary and this information can lead to science fiction movies and books and in that way they are workers of the light helping with the awareness plans, but they are completely unable to help humanity find the God Within themselves.

There is nothing wrong with contacting them except the danger of not moving past them into those of our own solar system. They are to be found around all planets in our solar system and some of them are from very advanced worlds, but those worlds are too far ahead of us to give those of us on the earth plane any help for our inner journey. The only danger in transmission from them is that it doesn’t lead us to inner growth spiritually. Because they can be seen with the concrete mind, they are much more believable and people want to contact them, because they can see them. This doesn’t take as much work on raising our own consciousness as does the contact with our own solar system, our inner universe.

Those staying in touch with space ships we see with our own eyes are shortchanging their inner growth. This is the easiest contact and the first contact made by a beginning psychic and it’s okay for awhile, but we must move on and go inward to contact those who can help us find our Godhead, the apex of our mind where we will find our God Within. When this has been accomplished, then contact with those in space ships from outer space will be more meaningful and understandable to humanity.

To explain inner and outer spacemen, the inner are the guides and teachers that inhabit any of the

planets in our solar system. Their duties are to help those on our planet understand their heritage as far as the lesson plan for our solar system. This includes finding the God Within ourselves that must be found before progress can go past the earth plane. There are several things inside our mind that need to be located and understood and used at the start of our inner journey, which is what the spiritual journey is, an inner journey.

Rings Of Energy Are Ever Present

The circles of light, the rings of energy, are ever present. Our ability to reach them depends on our desire to reach them and the desire we have for spiritual fulfillment and for the wisdom and knowledge of our great universe. If the desire is not there, the flow of knowledge will not be started because desire is what primes the pump to start the flow. If this is dwindling we have only ourselves to look to for the answer of why it is dwindling. If we do not take the time to digest and synthesize what we have already received – which will then, in turn, bring forth more desire for further knowledge or clarification – then the flow decreases. Those in the higher planes are not allowed to contact us or “bug” us, if you will, to give us information. That is a function of the lower planes. When contacting the higher planes we are more truly than before directing the energies. On the lower planes they will direct us or try to. When we progress to the higher planes we must see our path and plan that path and direct the help we can receive into the field of interest that we have.

Channeling And The Time Factor

The younger one is when they begin to channel, the less interference there is from the present lifetime, but the more interference there could be from previous lives, as a strong carry over from those previous lives. This would account for young people getting predictions about cataclysms, from remembering, perhaps even more so than an older person, what took place in a previous life. If this young person is a highly evolved soul with much knowledge of higher plane concepts available to him and has the ability at a young age to tap into the fountain, the creative channel, he should receive much good clear material unless it is colored and influenced by the environment around him that he finds himself in and the people with whom he is associated. This will then cause distortion.

This also accounts for the many predictions of cataclysms that are prevalent today. What is happening and going to happen is an inner replay of an outer display that took place in the past. This new beginning (the so-called New Age) is a returning of the ones saved, lifted up and kept safe at the time of the “ark” of which the Bible speaks.

The business of time and no time in the universe causes much trouble. The basic difference in some predictions is the fact that some entities coming in now remember only the information of destruction that was imminent at the time of the last cataclysms. Those who are not making these predictions, but are only preparing for a better world, are those who realize it has already happened and that they have been returned to do what they were prepared to do in the time off the planet. In other words, the separation has already taken place and those who are predicting it now are those who were destroyed bodily and have come back in with memories of these previous

times very strong in them. Those who are not predicting this are the ones who were removed and trained off the planet and are back to implement their teachings. The cataclysms have already happened! The New Creation talked of in the Bible is the same process that is ongoing now, the restructuring process mentioned as having taken place after the destruction of Atlantis. Time is irrelevant. It is all one and the same. (For more on cataclysms please see my book “Cataclysms?? A NEW Look at Earth Changes”)

The information available through the creative channel is in a time order ring of energy, (the divine mind, the beam of holy spirit), and the time of those cataclysm messages is one of the easiest to be tapped into by beginning psychics. All have memories of those days of flooding and destruction and think they are seeing the future when really they are reading the past. This is why some people don't feel threatened as others do. They have been pulled past that time period on the pole of information and as they go higher they certainly understand more.

Old Way of Channeling

Trance channeling is the “old world” method of channeling. The “new age” method of channeling is conscious channeling. In the old method, the person doing the channeling – the medium – stepped out of the body and let the one coming through use the body. This was mostly done by entities on the astral plane because they have forms as large as those of us on the earth plane.

Trance channeling is not to go into the new millennium. This is not the correct way to handle channeling. Those who go into a trance are not doing anything different than the mediums with their crystal balls did in the circus many decades ago. This is not what is wanted. Those people teaching trance channeling are doing a disservice to others and need to understand this so they themselves will grow past what it is they are doing and not encourage others to do it this way. There will be much karma involved for one teaching others “old world” methods.

New Way of Channeling

When channeling is done on the advanced planes, it is through correct esoteric means of using the Micro Universe. This means the entity coming through is no bigger in size on the earth plane than a pin point. The one doing the channeling on the earth plane, (the medium) does not need to vacate the body to allow one this size to come through. They merely “stand behind” the one doing the channeling, if you will. They are still in the body and the switch can be made back and forth from one to the other. Eventually the blending is completed by the higher entity intertwining with the cells of the body and “taking up permanent residence there.” This is when total synthesization has been achieved and the medium is in contact with the God Within. The medium will then be talking to the cells of his own body. This is the goal. Each one on the earth plane will have their God Within in residence in the body and be operating through divine guidance at all times.

As it is presently, there are many at all the different stages of growth on this progressive path of channeling. They all need to be encouraged to continue moving. As a matter of fact, it has been suggested that channels only give readings for a certain period of time because it

holds back their own growth. They should move on and pass the task of giving readings to those just beginning to channel. This will help the beginning channel's growth until he reaches a point where he should move on also. The beginning channels can give more accurate, daily information in the readings than can advanced channels; more information applicable to daily lives. The advanced channels are then free to give teachings applicable for the spiritual lives of humanity.

The true way to channel your divine heritage is to bring it through you as you – as who you are in this lifetime. The giving of the names (of the entities in the higher planes) when channeling is to be worked away from because it truly is coming from the channel himself. It is as memory tubes into the cells of the body. Each cell should be considered a mini-black hole, an inward bound vortex, pulling energy from above. This ability is there for people to draw on and help others. Do not misunderstand when it is said that it is truly the individual. They do get help and prompting at times from those on the other side, but the interpretation of most of what they get, when they do their writing and speaking, is coming from themselves and their background through many lifetimes, not just this lifetime.

In the future more people will be able to govern their own minds. Intense training in NLP (Neuro-Linguistic Training) would be of great benefit to those doing channeling. What it does is allow the channeling process to feed in while the everyday state is being maintained. This would be of great benefit to vocal channeling the proper way. Most vocal channels are not doing this. They are indeed in a trance, which is not the correct way. The proper function of the channel is to do unconscious receiving while talking to other people, using the material that comes in. This way it is much more relevant to the conversation that is taking place.

Remember, the present personality should not “vacate” the premises and give the body over to an entity on the other side. This is mediumship of the old age. The correct method involves not losing consciousness of the present personality, but stretching and strengthening the mind to allow the channeled beings “room,” if you will, to join you in discussions and teaching sessions. When it is said that humanity is only using 10% to 15% of their brain, this is what the other 85% is available for, the knowledge and information of the creative channel. That knowledge and information should become part of us rather than allowing an isolated entity from out in space somewhere to come in and use our form.

When the teachers and guides send something through, it comes as a thought or thought-block. The channel then takes this and elaborates on it and interprets it, or misinterprets it, through their own personality which, when the ego is still very strong, will twist and bend all information, all thought-blocks given to them. A thought is dropped down from the higher planes and it is there for anyone to pick up. It is not directed specifically to any one particular channel. The same thought-form is there for all to tap into if they are capable. Then it is interpreted or misinterpreted - whichever the case may be - by the personality of that individual. This is why channels must weigh all material that comes through and work away from naming names, because all they are doing is tapping into a thought-form which has been placed into the records by certain individu-

als. They are not truly contacting this individual. Let none tell you differently. The channel then elaborates on the thought-form they have contacted and this is where the coloring comes in.

Some Channeled Entities Themselves Are Into Glamour

Glamour is best described as anything that gives satisfaction to one's ego, a boost to their faltering sense of self-esteem. This is a pathetic situation for one with channeling capabilities to be caught in. Some entities on the higher planes that are being channeled are themselves into glamour. They were into glamour when they were on the earth plane and perhaps were making some progress on their own on the inner plane path until they started coming through someone on the earth plane. So you see, the ones on the earth plane that are channeling these entities are not only doing a disservice to themselves, but have also stopped and stunted the growth of the entity on the higher plane. Perhaps he is striving to right some attitudes he had that were very much against universal law. This is much harder to accomplish while on the inner planes and almost impossible for him to accomplish when fascinated with hanging around the one on the earth plane who is channeling him.

The more profound information for personal readings must come through a lower vibratory rate. Those on a higher vibratory rate cannot lower their vibration to gather the necessary information to satisfy the ego in humans without paying too large a price in energy drain. It simply is much easier for those on a lower level of evolution to do this type of thing. But some channels get "stuck" on this ring of energy far too long, and need to progress on, because time is always a consideration. There are compensations for moving on, even though they will be giving up the excitement of having people fawn over them because of the information they can provide. One of the compensations for moving on will be in dealing with the wisdom of the ages, not information to titillate and amuse their friends. The opportunities for their spiritual growth in this lifetime are phenomenal, but in most cases this growth is not taking place. Their emotional bodies are so badly out of harmony that it is pulling the rest of the form into disarray. They need to release the entity they are channeling, not only for his sake but for their own also.

Some questions that I would like to ask them are: Do you not know that channeling this entity will cause trouble in your relationships? Do you not know that you need to progress to a higher plane of contact with the inner life? Do you not know that this will not, cannot happen as long as you are locked into lower dimensional communication? Do you not know that there are different rings of energy each turning in opposite directions and that you need to move up to the next level as a start and even higher? Do you not know what your soul chose to do in this life? Do you not know that you cannot have balance when living with the conditions you find yourself in? Do you not know also that you cannot raise your consciousness level if the emotional body is not balanced? Do you not know also that you are in a perfect situation to strengthen this emotional body, if more time is diverted to spiritual study and contemplation?

Misuse Of Power

Those who receive the gift of holy spirit, (the holy ghost or tapping into the rings of energy or the divine mind or whatever you want to call it) at the same time is endowed with much power to

help humanity. It is a great responsibility and it's a very subtle thing to know when this power is being misused because its misuse most often comes when this one is on the inner planes while sleeping at night. Therefore, if not in true contact in the waking hours with what took place during the night on the inner planes, then one does not realize that one is misusing it. When one's mind is tied up with day to day trivia it still can and must be free to apply incidents of third dimensional life to oneself. A good teacher must be able to come down and explain things on the level of the student. How else do you think those on the higher planes could teach us? We simply couldn't understand the concepts that they live their lives by. As an example, a good music teacher should be able, after a short interview, to know a new student's standing or level and immediately know what book or method this one needs to have and also what musical exercises. The same would be the goal in spiritual teachings. When teachings are just applied to the surface, they are not learned. Each piece of information needs to be absorbed and applied and worked with, until it either is accepted totally into the whole being as an unalterable truth for that one or it is utterly rejected.

Conglomerate Channeling

True channeling, channeling done the correct way – the way that is to progress into the new millennium – will always have a conglomerate doing the transmitting, not one entity. An individual entity should not be using the form for his or her sole use. Now perhaps they are part of a conglomerate and only this one cares to be the spokesman, but this should be acknowledged if it is a fact. Most of those coming through singly have an ego problem and want center stage all to themselves.

Conglomerate channeling then meshes so well with the present personality (the person on the earth plane) that it takes someone with a good ear to detect when other facets of the present personality come into the scene. The more it is practiced, the smoother the process becomes, until there is no separation of thought or nuances in the speech. Once the synthesization has taken place, there should not be a distinctive difference between which member of the conglomerate the material comes from, and no difference between any of the three areas it comes from which are, remember, your own past incarnations, the teachers and guides and the universal mind. (This is the correct meaning of the Biblical term trinity – your trinity.)

The material is woven together in the computer of the mind and comes out as one unique line of communication from the channel. This is as it should be, as it must be. It can be no other way because our conglomerate cannot “take credit” for anything that is coming from our past incarnations because they had nothing to do with them. Also, the conglomerate cannot “take credit” for how the channel interprets the universal mind. That also is the unique ability of the channel. And, naturally, they can't take much credit for what the channel has learned in this incarnation because even though some of the conglomerate may have been guiding the channel for part of this incarnation, the channel's experiences are uniquely their own. A conglomerate can take credit for, perhaps, one fourth of the material that issues forth from a channel and because there are usually seven in each conglomerate, each member of the conglomerate is responsible for only one-seventh of one-fourth of the material coming from a channel. Therefore, it does not make good com-

mon sense to put any of the names of those in the conglomerate on it. They are not interested in furthering who they were or what they were when they were on the earth plane. They are overjoyed that they can help all of humanity. This is the only answer that should come forth from any one working with the highest entities. This is the proper way for channeling to eventually evolve to.

Walk-Ins

A true case of walk-in is very rare and, believe it or not, is not a successful way of handling what it is that is to be accomplished. We are speaking of a soul who actually goes back to the inner planes and another soul takes over the human form. This is a “physical” walk-in and, as said, is very rare and not too successful. It is usually done by those of lower evolution.

The proper way for a master teacher to return to earth is by intertwining with the soul already in the human body in a “marriage” of spirit. This is highly successful. This is what took place with Master Jesus and many other of the great teachers. The entity who enters the form at birth is a “chela” or student of the master and brings the form up through the early years preparing it through education and nutrition to be able to handle the energy and to be able to understand the process of intertwining when it does take place. Many of the channels at the present time did not follow through with this process and now that the preordained time is upon them for the master to use the facilities, they cannot handle it and have many problems both physically and mentally. It has been said it over and over again in these Chrysalis Teachings that the arts are the saving grace of all humanity and most especially those who set the stage before incarnating to allow a master to use his human resources to enlighten humanity.

Education Through The Arts Best Way To Open Channel

The most successful way of opening this creative channel in all will be by actual “hands on” creative expression every day of their life beginning at the youngest age possible. All must be encouraged to “express feelings” at all times. Perhaps theater is the best way for adults, because when they can pretend they are someone else, they can remove their vanity from the situation and express their feelings by hiding behind the character. The channel will open according to humility of the person, their motives for using it – which are known to those on the inner planes – and service to humanity, sincere service over a lengthy period of time. It also will open to those who have seen the pits of despair as far as their personal relationships are concerned. We are not saying that one needs to live in their own hell for a period of time, just that this does speed the opening. To sum it up, the creative arts are the best, safest, most sure and reliable way to open this channel in both children and adults. Every class the young child is in must be geared towards the expression of self.

After the opening of the channel is accomplished then all education needs to be aimed at the proper use and functioning of the channel. For instance, the energy that is needed for channeling. This is, of course, a progressive need and this is where education on nutrition needs to become an important part of training of the child at this time. There are certain foods and vitamins and minerals that will enhance the ability to channel and these need to be known and introduced into the

diet at different stages of progress in channeling.

The individual goal for all is the totally synthesized man. The goal for humanity as a whole is the Brotherhood of Man. The first can only be reached through the creative arts which will lead to self-esteem for each individual, which will lead to the Brotherhood of Man. This is the middle path, the central channel, the balance point in all things and it must begin to be stressed in our school system.

Some Guidelines For Those Wanting To Learn To Channel

To begin with not all people chose to be able to channel in this lifetime. But for those who have a burning desire it most likely was part of their chosen plan of progress.

The simplest way to have people begin is to visualize the “other side” as something they are curious about and ponder on what the contact would be like— in other words, the field of energy that surrounds their inner being. As you start to channel and the realm of information that is needed goes outside the knowledge and experience of your inner being there is a opening of the channel that then allows access to higher realms of knowledge. In some cases your inner being must reach out into these other realms but in many cases the beings in the higher realms will come down to this opening. Depending on how spiritually advanced you and your inner being are is what makes the difference. The more advanced you are, the higher up into the tighter vibrations this opening is.

Picture the energy being diffused around your physical body. The different layers of your aura each become progressively tightened up and as you reach up and expand out into the ethereal realm around you this tightening up continues. Your channel of communication progresses as your vibratory rate tightens up.

Therefore, the first thing that those wanting to channel must do is raise their physical vibration through perfecting their bodies. This is done with diet, exercise and health related massages, deep tissue massage, and spinal manipulation. Bio-energetics is another field that helps.

At the same time the vibratory rate of the mind must be tightened. This will be done by study of spiritual truths, meditation practices and clean thinking – no bad attitudes should interfere with positive thoughts. After a period of raising the vibration both inwardly and outwardly, which will take different times for each – for some it will be from several months up to perhaps several years – then comes the actual sitting down and concentrating on a question you have. It would be best if this question were one of general interest, not a personal question pertaining to some action you should or should not take. The reason for this is obvious. If it is a personal question, the personality will enter the picture and impress the mind with its desires, whether they are for the good of the entity or not.

A question of a general nature having to do with humanity as a whole will allow the inner being to need to open the channel to the higher realms. A personal question will contain the channel to

the earth plane communication realm. The beginning of channeling should focus on making that opening happen as soon as possible.

Many people at this time are channeling their higher beings and think they are channeling the divine mind. This is not so. They have contained the channel to the expertise of their inner beings but are not opening to abstract thoughts of the Creator. These abstract thoughts are what will stretch the mind.

Sometimes you will channel only your own inner being because this is the knowledge you are looking for at that particular time but most of the time you will go right on past it and contact the universal mind. There are many stages of this universal mind and some of them come through as a single entity and some of them as a conglomerate. Many times it depends on what arrangements you made before incarnating as to what will be your point of contact. The most important thing is the desire to want to make contact and this desire must be for your own personal spiritual growth, not because you want to use the channeling as a gimmick at a party, etc. This kind of attitude will only draw unto you discarnate entities who will have fun with you.

The stage of pondering a question about creation, eternity or humanity as a whole is an esoteric stage and the information that comes will be almost poetic in nature and many times will not be understandable as a direct answer to what you were pondering. If you get a very specific answer with details, etc. you should immediately rule this out as true contact as you most likely have contacted a discarnate, and while they may not be using you to have fun with, this is not the level you want to tap into for spiritual growth.

This practice of pondering a question should take place each day, at the same time if possible, for a period of perhaps ten minutes to start. You do not go into meditation or make your mind blank. The doorway into the channel is through your own mind. Therefore, your own mind must be actively involved in the process of breaking through into the higher realms. This is where most people make their biggest mistake. They mistakenly believe they have to clear the mind and make it empty or go into a trance. This is not so. If it were so, everyone that does this sort of meditation would be channeling. The mind and thought processes of that mind must be involved. This mind is made up of your animal-based brain, your personality and your half of the soul on the earth plane. The contact is made with the half of your soul on the inner planes through magnetic attraction between the two halves of the soul.

When this contact is made the connection needs to have direction as far as what to do with the contact. This is where the personality comes in – using the transmitters of the animal-based brain to give direction to the connection. Once the connection between the two halves of your soul has a directed statement to respond to, then begins the process of stretching and reaching, if the information requested is outside of the half of your soul on the inner planes. This is why it should be a question of a general nature – a philosophical question. Otherwise the contact will stay at the earth plane level instead of opening the top of the channel to search outside of the soul's own experience. At this time, if proper preparation has been made and constant positive thought has

been kept, you will contact the higher realms which is the true home of your inner being. Your inner being has, you might say, one foot in each of the two realms, the earth plane communication realm and the higher realms. This is why the questioning process is important as to subject matter. The earth plane realm is subject to influence and interference from earth bound discarnates and you must get past this stage.

Your first few attempts may only make it this far, and it is up to your common sense as to whether you think you are in contact with discarnates or higher beings. As given, it depends on your stage of evolution. Those not so highly evolved will reach discarnates who will then proceed to lead and guide a person into what this discarnate wanted to accomplish or finish in his life and didn't. This leads to all kinds of problems including mental illness, murderers, rapists, abusers and at times even leads a person to commit suicide. The inner being that you contact, your inner being, must be highly evolved enough to be able to shed these discarnates and proceed to step both feet back into the higher realms, but you must be wise enough yourself to follow your inner being even though it may not be as exciting or even as interesting as what some of the discarnates can tell you.

Cyclic Ebb And Flow Of Channeling Needed

The new philosophy about channeling will concern itself with the individual right to grow and progress, each at their own speed. It will start with the schooling bringing forward the inner being of each person at a very early age. This will lead to the necessary intertwining of this inner being with the present personality. This is most important. The direction that some are taking now is that of turning their whole incarnation over to their inner being. This is not what is wanted or needed. Can you imagine what the world would be like if all these inner beings were walking the face of the earth in embodiment? There would be no progress made because we would be stuck in outdated ideas for the most part.

The way the higher beings can help us is for us to be on the earth plane experimenting and sending them the results of our experiments. They then take all this material and condense it and come up with overview thoughts. These thoughts then are sent back to us for experimentation and this, then, returns to them. It is a cyclic ebb and flow of information that will progress the human race. If they were walking the earth with us or walking the earth by themselves it would not progress. It takes the one down here returning our thought to those up there. It was tried the other way and did not work. This was what Atlantis was all about. Since the restructuring of Atlantis, channeling has started opening in so many people that progress is much, much faster and becoming more so all the time. Eventually the channel will be wide open on children as they are born. This does not mean that they will remember their past lives, only that direct communication can be had with the channel in a momentary, cyclic process. This is the proper way to channel and is the proper goal for all.

Other Channels

Following are some responses from the channel when asked about certain books by other channels, or about the channels themselves:

“After We Die, What Then” - George Meek - Metascience Foundation - Franklin, North Carolina
Mr. Meek is a sincere seeker after the truth, but is a weak link in the communication chain, thereby misinterpreting the information he receives. He is receiving from both the universal mind and the teachers and guides, but is not clear. He is surrounded by fogs and illusions. He needs to clear the channel, perhaps with methods in “Rainbow Bridge” Phase I - New Age Press available from The Triune Foundation, 456 E. Grand Ave., Suite 101, Escondido, CA 92025. After working with this, the miasmas of old world thought will start to dissipate and no longer cloud and color his information. His book is approximately 56% accurate, which is not a good level and should not have too much stock put in it. He is still tied to Biblical writings in the deep inner recesses of his being, coming from previous lives.

“As We See It From Here” - Holmes

This book is about 74% accurate - much more valid and valuable as a tool than “After We Die, What Then.” This man could be even more effective and accurate with more dedication to the inner life research. He likes his physical comforts and does not apply himself to his mission, which was to bridge the communication line between realms.

“Agartha” - Meredith Young-Walpole - New Hampshire

She is a good clear channel and her book is 80% accurate, but the inaccuracies are much the same as mine, truly in areas that do not mean much, such as time arenas, etc. The material in this book is presented in a unique fashion and we would suggest that you read it. She has a way with words and a presentation that grabs the readers interest and holds it from beginning to end. Do read this one.

“Right Use Of Will” - Ceanne DeRoham

The material for this book came from the master teachers on the eleventh plane. This is case where the one receiving the information has misinterpreted it.

“Secrets of the Father’s Little Book.” - Tuella

This book is not one which should be recommended to most people. For some it can be enlightening if they have a questioning mind and do not accept everything they read as the full truth. But for others, it could easily lead to much misinterpretation as to the reasoning behind what Tuella is discussing. To begin with, the clearing that is being talked about was a clearing of the mentality of the people, not the earth itself in that particular area. Tuella herself sometimes misinterprets what she is doing. This may not be too damaging because it does cause people to focus on the earth itself which needs the help also, but for the most part, the material given in that book is to be applied to the inner beingness of mankind. Therefore, what can be gained from it is appropriate for where a person is standing on the path but, as given, may not be for others. This is true for all books.

Benjamin Creme

His energy meditations are causing concern on the part of the higher beings because this energy

is not being focused right. It has not the direction he thinks it has and instead of doing good, it is disrupting those it touches on the other side. Those in his groups are erratic, and sharp, pointed jabs are coming from some of them. Others are ineffectual. Other than disrupting those who are healing from the experience of crossing over, these meditations are not doing any good, due to lack of focus.

The good that could come was misinterpreted from the beginning. He was told to meditate and send energy to all level two souls to try and help them rise up in consciousness. This would be those hopelessly trapped in the mental hospitals on the earth plane, not on the other side. When they leave the earth plane and cross over, they are no longer trapped and held at level two consciousness.

There are some on the other side at that level, but no one can touch or reach them from our side of the veil. This information needs to be given to him. A simple misinterpretation as to which side of the veil, but one causing harm and doing no good. Mr. Creme needs to be brought abreast of accurate teachings.

Sai Baba

He is a high master teacher, but is not the one Christ referred to when he said “He who sent me will return again.” Sai Baba is a master of the 12th degree on the earth plane levels. As such, he is out of touch for the most part with “middle of the road” humanity and truly lives most of the time on the inner side of life. By doing this, he is not of much practical help at this time for most of humanity which is what is most needed.

Sai Baba is a clear unadulterated, pure channel to the spiritual realms, but concepts reached at this level must be taken and mixed with the personality, the “feet on the ground” of the one on the earth plane, to be of value as far as educating humanity. A master on the 12th level is not able to do this, at least not without much effort and he must also understand why he must be able to do this and then must desire to do this – to help humanity that is.

Clare Booth Prophet

The work of Ms. Prophet is not of the quality that should be used for the enlightenment of humankind. Her work started out to be more pure but has become enmeshed in glamour due to the ego of the earth plane personality. The rest of that being we call Ms. Prophet (the part on the inner planes) is a very highly evolved group, but have lost control of the personality in incarnation. They try very hard to keep her on a level of quality, but each publication that comes out is further off the path than the last. This is what comes of trying to become wealthy by using the teachings to put out books one right after the other, with an eye to salesmanship. She could bring this back into line if she were made aware of what is happening and it would be ideal spiritual growth for the personality in incarnation. But this will probably not happen. Anyone who wants to read her material should read the older material. If reading the new, please keep in mind that there is sensationalism creeping in more and more.

Dennis Adams

Dennis Adams will eventually be the instigator of a system that will provide “breakthroughs in awareness” for many locked into fundamentalism. He has not begun this work yet, but this is his ultimate goal and he will soon begin to realize this. His work will begin changing very slowly at first, but as he sees his pathway ahead of him, he will “pick up steam.” Until then he will continue to “feel his way” about what it is he is supposed to be doing. He has some very good ideas of how this could be accomplished now, but is not ready to implement them. We would like to see him associated with the Chrysalis Teachings when he starts this course for the fundamentalists. We would like to see Chrysalis incorporate his work into their network, as Chrysalis does not focus on the fundamentalism aspect of the churches.

The Quartus Foundation

Texas

This material is coming to them currently from the eighth plane. Previously it was coming from the sixth and seventh and had not and still has not had an opportunity to find distinct direction as planned before entry by this channel.

Astara

Upland, CA

There is a form of spiritual ego here. There is a great deal of unspiritual like thinking that takes place with all channels at a certain stage. The best that can be done is to let each handle what they feel inclined to. Feel open love and understanding for them and commend them mentally for the part they are playing in the overall scheme of things.

Orlos - Glenwood Springs, CO

The channel named Orlos from Glenwood Springs is a beginning channel, but one who will become a strong channel as time passes. Her material is accurate, although some of it is of a nature of innocence. By that we mean she believes that she has been specially chosen and that no one like her has appeared around here before. She will soon see that this is not the case and when she realizes this she will mature in her thinking as to her role in the scheme of things.

Following are some questions and answers that shed some more light on channeling for us:

Benjamin Creme claims that Maitreya is in embodiment as one living in the Asian community of London. Do you agree?

This has been a rumor coming from more than just Mr. Creme. The one in England that everyone is mistaking for Maitreya is a high master, but is not Maitreya. He has entered to accomplish a mission, the subject of which we are not at liberty to discuss. The time simply is not right yet. When it is right he will let it be known.

Question - How can we distinguish between our soul’s communication, our guide’s communication and our inner plane teacher?

This takes much practice and trial and error. This is what the whole incarnation is all about is to learn this through experiences. The lessons or tests are always there in front of one and will be presented over and over until correct reaction is accomplished. The more blatant and insistent the voice being heard, the more probability there is that it is the personality and not that of either the soul or the teachers and guides. The soul, when giving messages, will be very soft and gently insistent, and will always leave room for free will. The messages from it will deal more in actions and reactions to circumstances in the daily life. When the realm of the inner plane teachers and guides are reached the messages will carry a more all-encompassing viewpoint, not that they won't bring personal help and guidance, but the thoughts will come on a more universal basis, such as how humanity as a whole has always responded to certain situations and isn't it time that someone, somewhere starts to change the situation.

Another way that may help distinguish which place the messages are coming from would be to liken them to different areas of your head as far as thinking goes. If you say that something is "in the back of your mind" that is probably your own soul. If something comes to you "off the top of your head" that is most likely the inner plane teachers and guides. A thought that is almost an instinctive reaction or an automatic reaction to a situation is most likely your personality. When one gets to the point where he can draw from the divine mind he will no longer need to worry about which place a message is coming from because all will be totally synthesized by then.

Question - Is it important to have knowledge of the distinction between those two?

Answer - Yes it is important to have knowledge of the distinction because this is wherein the progress of the incarnation lies. The more ability one has to distinguish between messages, the faster his progress will be.

Question - Can we receive direct communication from God as opposed to our soul and guides, etc.?

Answer - Only when a certain level of growth is attained. It is not so much that God speaks to you as it is that you contact the thoughts of the Creator. Most people think they are hearing the voice of God when it could be any one of the other places we receive messages from. Usually when one is communicating directly with God they are not going to announce it blatantly to the world because to be able to reach this point of evolvment they would no longer be interested in announcing it.

Question - Are there different levels of truth being channeled? Where are the various levels or planes? What is the causal level as it relates to the Chrysalis Teachings?

Answer - There are twelve different levels of truth and each of these levels have twelve stages within them. Therefore there are at least 144 different levels of truth being channeled at any one time by all the various channels who will all color them because they come through the person-

ality of that channel. Learning to discriminate between them is one of the many lessons for humanity at this stage of evolution. Your decision to trust in any one particular channel shows us the level of your involvement. The various levels and planes are described in Volume II of Truths of Man's Divine Heritage by Norma. The causal plane referred to in other material is the combined levels of 4-5-6 in the Chrysalis Teachings.

Question - Typically, some channels pay attention to spiritual evolvment and encouraging humanity to not feel guilt and fear. The Chrysalis material is very scientific. Is there any reason for the priority that is being given to scientific material over spiritual material in the Chrysalis Teachings? Please clarify and explain.

Answer - Those working with spirituality of individuals are working from a lower plane or dimension. When you are at the level the Chrysalis Teachings are coming from you are spiritual. You do not need to have the instruction and the outward display that those not as evolved need to have. This would also apply to the channel that is chosen to be used. The channel must also be of higher evolution. Being spiritual means nothing more than being the best person you can as far as your interaction with your brothers and sisters and doing what you are capable of to help all of humanity. Science is spiritual. The two are interrelated to the point where they cannot be separated. To be one is to be the other. Your Creator is scientifically perfect. What other way could a human be? To be as perfect as his Creator he must be scientific. Those working on individual concepts of personal spirituality are working in the lower right division, the emotional body. They will progress in each life towards the higher concepts until they too reach a point of knowing that science and spirituality cannot be separated.

Question - Can you comment on The Course of Miracles? Who channeled it and what level or dimension were they at?

Answer - The Course in Miracles was channeled on the other side by Jesus Sananda (His universal name) Himself. At that time He was above the twelfth dimension in the outer limits of our solar system. It was one of the beginning messages to begin the plan of awareness for humanity that is still ongoing. The Course in Miracles was an early attempt to bring humanity out of the "guilt trip" that the churches had put them on. It was to enlighten them as to the fact that each individual has equal worth in the eyes of the Creator, that all are on an individual path and that none should judge another. These are excellent teachings and are still valid today because beginning seekers still need to have this knowledge. They must have this background in order to be able to accept the Chrysalis Teachings. The two courses would compliment each other.

Question - Are there any dangers involved with channeling? If so, what are they and how can one protect oneself from them?

Answer - There are dangers involved with the beginning stages of channeling. Most of these dangers come from the person's own make-up. It involves their duality. There is some danger from the astral plane, but if one is channeling due to a natural opening of the channel this will not be

as big a problem as it will be if one has forced the channel open. Also, the first lifetime when the channel opens is the one in which most danger will be apparent. If one has channeled in other lives, then his use of the channel is well established and he automatically overcomes the problems.

As stated, the biggest danger is generated from within the being of the one learning to channel for the first time. He must be in close touch with either an earth plane teacher or the inner plane guides. The inner plane guides become confused in his mind with the entities wanting to come through the channel. These will be, in the beginning, the past lives of the one learning to channel. If they had a devious one in their past, and for some reason this one was either allowed to come through to clear up something, or was chosen to be an influence on this life for some other quality he had, then this one could want to take over. He would even imitate the inner plane guides if necessary to allow the personality on the earth to let him come through. This is wherein the danger lies.

At this stage, the type of information coming through must be assessed very intelligently. If it is glorifying to the channel then question it. It is all right if it deals with personal matters in the beginning if the material coming through deals with common sense advice and logical approaches to problems. But if any of it suggests an act or deed that the channel himself would not contemplate doing in his daily life, then question this material closely. Question who is bringing it through and why. Have them state their purpose and be very firm about what you will do to help them and what you won't. Inform them that their turn will come to clear up unfinished business, but it is your life and you determined to only work on certain aspects of your karma. If the karma carried with you this time was not caused by their deeds in a previous life, then they must await the next personality to be spun from the same seedcore for their karma to be cleared, if even then. It may be possible that their karma will not be cleared in a personal manner. It may be put off until having to be cleared in a general karmic matter. If they had no good points to their life that can be incorporated into the whole, then that particular personality will not have any part of himself become part of the seedcore that lives eternal life. This is important and this entity will be one that will panic and try to lead and take over the one on the earth plane. This is one example of possession and one of the hardest to deal with.

Question - Can you tell me what part breath and breath control play as far as channeling?

Answer - The part that breath and breath control play, as far as an individual's evolution, is that of a facilitator for reaching the higher realms in a meditative state. Naturally breath and breathing is very important to the functioning of the physical body, but this is not what your question is about. Breath and breathing have not been stressed in the Chrysalis Teachings partly due to the fact that the channel never used this facilitating method, and partly because the material coming through this channel has never stressed individual development. Her role is not in that arena. She has experienced a little of the breath and the breath control and realizes there is a validity to it, but in her particular case it was not necessary. In other particular cases it may not be necessary either. Each one is an individual. If one has good experiences by using breath and breath control,

then certainly you should use it. But to not use it is not going to stop the development. It is most definitely used in vocal singing and therefore would be of much help in the vocal channeling area. This would enable a channel to be able to develop the necessary endurance for longer periods of vocal channeling.

Question - Astrology tells us that during those periods when the planet Mercury is in retrograde, that communications between people tend to be quite difficult and there is often a great deal of misunderstanding. Similarly, contracts and agreements made during these periods often fail or are broken by either or both parties. Is it possible that channeling could also be affected? In other words, is there a greater potential for misunderstanding of channeled material when the planet Mercury is in retrograde?

Answer - There is a definite effect on channeling by astrological events. It has much to do with the astrological signs that a particular channel is born under, but will affect all channels to one degree or another. The power and influence of certain events cause the channel to bring through the information colored by the influence of certain planets that are in line with the earth at that particular time, combined with the channels own astrological influences. There are so many variables that can affect channeling that it is a wonder that any of it reaches the earth plane in any degree of accuracy.

For the most part, the earth plane channel has the most effect on the material. The astrological influences are to the interpretation the channel puts on the material. It does not come from any astrological influence on the material itself. In the case of this particular channel there is very little influence from Mercury being in retrograde as far as how she is interpreting the material. It is having an effect on her ability to clearly and precisely draw it to her, but not on her interpretation. In other words, Mercury being in retrograde is affecting her exoterically, not esoterically. Her own astrological signs are such at this time that they counter any negative influences that Mercury might have on interpretation, but there is one aspect of her chart that is allowing a physical reaction to the present astrological influences of Mercury.

Question - In Jon Klimo's book "Channeling" on page 224 it states: In hypnotically induced experiences, researchers cannot agree on whether the entity is the actual historical past-life persona of the hypnotized subject, or a channeled being separate from the subject and her past lives, or a sub-personality of the subject's dissociated unconscious mind. Careful content analysis of the information communicated in these situations is often the only way to begin to resolve the matter. To date, the method leaves much open to interpretation. Could you please comment on this?

Answer - The answer to this puzzling problem is that is a combination of the past life of the spiritual entity residing in that body and a genetically carried memory passed through the physical body. When an person is hypnotized by another it will never be a channeled entity of a separate makeup from the unmanifested state, because they do not come through hypnotically induced trances (trances induced by someone outside the form being hypnotized). They cannot get through

the paralyzing action that is caused to the brain cells in this sort of a hypnotic trance. This type of hypnosis is not the proper way to help people. It quite often causes a problem in that some of the brain cells never do return to their full function. They remain inactive, or still in a trance, even after most of the rest of the brain has come back out of the trance. When a trance is self-induced this does not take place. It is the effect of the energy of the hypnotist not blending in harmony with the energy of the subject being hypnotized. In a self-induced trance this disharmony is not there and there is no permanent blocking of movement from these cells. The non-blocking of movement that is accomplished makes it easier for entities other than those coming from the subject's own being to come through.

Question - How can I be sure when I meditate, that the messages and impressions I receive are from the “Star Buddies” or my subconscious?

Answer - When you meditate, you must then evaluate all “messages” or “information” you receive and then look at yourself honestly. Is what you are receiving always what you want to hear, similar to confirmation? If so, it probably is coming from your subconscious mind. If it is thoughts that “shake you up” and make you question your own concepts, it is most likely coming from the teachers and guides. Remember, please, that when just beginning to receive from this area that the teachers and guides will deal with personal problems to encourage you to continue. When the communication lines are stronger, then the material will become, at first, more profound for you personally, for your own growth and eventually it will become more meaningful to others as far as the growth of the rest of humanity. When this happens, the personal help will cease, for the most part for a period of time, until synthesization takes place between your higher and lower selves and then the personal guidance will be there at your fingertips at all times. It is a progressive path and the reasoning, intelligent mind must be applied to what you receive at all times. You must constantly ask yourself if it feels right or sounds right to you. This is what was meant by “testing the spirits.”

Question - What percent of earth people are channels? What percent of those are highly evolved channels?

Answer - We would estimate that perhaps only one to two percent of all the people on earth are channels of anything other than their own past lives. Perhaps this is not what you meant. If so, we would guess that perhaps ten percent can channel from their own past lives. An additional one to two percent can channel the inner plane teachers and guides. We could not even put a percentage figure on those who channel the full range of possibilities such as this channel does. There are five on the earth plane who can do this as given previously.

Question - Please define guides, inner teachers, personal teachers, etc.

Answer - Inner plane guides are those on the other side awaiting reincarnation, but are from the three higher levels of the astral plane. In other words, levels 10-11-12 of the astral plane. They are not always necessarily more knowledgeable or evolved than those they guide on the earth

plane, but have the advantage of expanded sight which allows them to see the path or direction those under them should take. This allows them to guide those in their charge in the right direction for that particular entity. They are very helpful in guiding the exoteric life activities, but may not be as knowledgeable in spiritual matters as those they are guiding. In some instances, these inner plane guides are learning from the ones they are guiding and this helps them, in turn, when they reincarnate.

Inner plane teachers are those who have moved up and do not have to reincarnate on the earth plane again, unless they wish to. They have rejoined their twin soul and as a whole spark are working on seedcore projects. A personal teacher is an entities' own soul, and is the only one empowered to help, guide and teach an entity as far as spiritual evolution at this stage of progress. This would be mind dimensional levels 4-5-6. They are working with the inner plane guides. The inner plane guides help with exoteric life and the other half of your own soul with spiritual growth all at the same time when in the emotional body, or levels 4-5-6. This is called the levels of illusion because if the soul does not have much contact with the half of the soul in incarnation, then the entity can be led astray through psychic phenomena by listening to inner plane guides. These guides do not necessarily lead them astray purposely. Most of it is due to misinterpretation and a lack of control of the soul in either realm.

A master teacher is one on the inner planes who has moved past the seedcore level and is working on scientific projects for the undersoul. An avatar is one who is working with the oversoul himself mostly to coordinate the activities of the master teachers working for the undersoul. Level ten is the scientific plane, eleven is for those undergoing training for becoming avatars. Level twelve is only for avatars. There will be more avatars in the future as more are continually progressing up the ladder. Until now, there have been very few ever reach this plane of twelve. A few have reached it and have moved on past it to another solar system. There is a well-planned field of help and expertise for everyone. The lower levels are the hardest and take much work. The more quickly contact is made with the other half of your soul the easier and faster your progress will be from that point on.

Summary

Channeling is an absolutely normal function of humans. Human beings are the link between two different manifestations of God energy. There are three dimensions lower than the human and three higher. There are seven planets used for these manifestations of energy. The merging of the lower and higher takes place in the middle kingdom with humans, on the middle planet, earth.

As the link between the lower and higher, channeling is of both spiritual and physical importance. It is the line of relationship running through all the kingdoms tying them together and is of a twofold nature. One aspect of it is ESP and intuition which is the natural link-up between kingdoms. The other aspect is the channeling that feeds into the human from the higher dimensions. The total process is a function of the human form due to its having evolved through all kingdoms on its evolutionary journey starting with the original Elemental Kingdom and working through the Geological, Botanical and Biological Kingdoms where humans are found. The high-

er kingdoms are also a function of growth and evolution of the human part of the Biological Kingdom, and eventually the return to the Elemental Kingdom on a higher level of evolution will complete the divine circle and end yet another cycle.

The human being is the physical manifestation of all aspects of the Creator. It is the only kingdom able to encompass and function through all kingdoms simultaneously. It is a very rare and beautiful part of the Biological Kingdom, of spiritual importance to all universes due to its uniqueness; a marvelous handiwork of the Creator and a scientific research project of His that is still being perfected.

There is a distinct difference in channels because channeling is based on mathematical, musical progression of absolute perfection. When channeling first opens it must work its way up through the manifested ways of channeling to the unmanifested ways. The first way involves psychic phenomena or mind to mind phenomena, not only human to human, but also human to animal, human to plant and human to mineral. The second way is mind to mind phenomena human to the Prismatic Kingdom, human to the Atmospherical Kingdom and human to the Astronomical Kingdom.

The channels that use the beta waves are the lower kingdom channels as these waves are radiations of the animal-based brain and radiate upward from the lower kingdoms. Those who use alpha waves are the higher kingdom channels as these waves are radiations of the divine mind and radiate downward from the higher kingdoms. Both manifest in the human being. A channel will work from the one state into the next if they continue growing and evolving and raising their consciousness.

The channel begins with mere instinctive actions until awakened by the kingdom ahead of it as to its purpose and ultimate goal. Humans have the ability to draw on all this instinct and turn it into intuition and is able to “tune in” to all these kingdoms plus their fellow human beings. The humans then take this intuition and hone it to a degree by tuning up their vibrations musically and allowing a transcendence or blending of beta and alpha waves to take place. This blending process is the period of psychic phenomena that all go through, must go through, to be able then to draw in the higher energy, that of using the alpha waves.

There is nothing unusual or spectacular or “of the devil” or harmful in channeling if it is understood as a perfectly natural process. It is the lack of understanding that causes problems. The greatest spiritual accomplishment anyone can aspire to on the earth plane is to learn to use their channel in a wise and loving way that is beneficial not only to themselves, but to all kingdoms.

Those who want to achieve this ability to channel must first transmute any attitudes they hold that are unbecoming to a God, as that is what they will become when the ability to channel their God Within becomes a reality. Therefore, this must be the first stage of progress for this channeling ability to open up. Transmutation of attitudes is the way to move on past the psychic stage. Transmutation is the bridge from each stage of the path to the next stage. There are always more

bad attitudes of a higher level at the beginning of each stage that need to be transmuted. You go through a thorough transmutation process when bridging between psychic phenomena and channeling. You go through another set of transmutation of attitudes before the bonding takes place. Each set gets harder, but the seeker becomes more purified at each stage. The next set of attitudes for you to transmute would seem like very good qualities to those who are in the stage of transmutation between psychic ability and channeling. Even though you have achieved a goal to be desired, you know there are many higher and harder stages yet to come for you.

As given some time back in the Chrysalis Teachings, there are inner spacemen and outer spacemen available to help humans on their spiritual journey. The inner spacemen are those who will be able to help direct and guide the spiritual path of the entities in incarnation on the earth plane. The outer spacemen are those from other planets who have the ability to be in direct communication with the people on the earth plane, but are not necessarily inclined to give information that will help further the spiritual progress of humans. They have no intentions of hurting them, they just do not have the understanding of the animal nature, including the emotional body of human beings. Humans are only partly of the same nature as these other planets and none from the other planets can ever fully understand them and therefore are not able to truly help a human being. Their method of accomplishing spiritual growth can not even approximate what a human must go through to accomplish this growth because they do not have an understanding of what it means to have evolved through nature the way the human being has evolved. The mere fact that human bodies are composed of material of which the earth is composed has much to do with the functioning of this body and the interaction of the body with the piece of the Creator which is embedded in each body.

Those from other planets have no conception of what it means to feel something in every fiber of their being. They only can approximate this feeling mentally, they cannot feel it. As they grow and progress they become much better at approximating these feelings. As they climb even higher they can offer much good advice from an intellectual standpoint and as they progress even more they can offer spiritual goals. They can explain their methods of reaching these goals, but they cannot ever really bring this down or relate this to what a human would have to accomplish in order to use the same methods.

Herein lies the problem of depending on help from other planets. They mean well for the most part, but truly are not as capable of helping as the inner spacemen. To explain what is meant by the inner spacemen – these inner spacemen are what is being referred to by other channels as your “inner being.” This inner being that all humans have access to is a conglomerate of all thought that has ever taken place at any time throughout the history of the planet. This conglomerate inner being is not the divine mind, it is human mind condensed and compressed into only that which serves to further the growth and evolvement of human beings. There is an elaborate process that takes place with the thought forms that stem forth from humanity. For the most part they are contained close in by the earth until they have been proven to be of absolute value as far as furthering the spiritual uplifting and uprising of the human spirit out of the animal flesh.

The thoughts that go forth are monitored and filtered into different conglomerates. These conglomerates are made up of previous personalities of those incarnated on the earth at this time. They take the current thoughts that are coming from humans and work with them and send them back to the humans who tap into this conglomerate mind. These humans take the thoughts, send them out through several different means such as books and lectures, to other humans. These other humans, in turn, have their thought to add to or change what they read or hear, and these thoughts are automatically sent back to the conglomerate mind, or inner being, where they are once again monitored and filtered. These thought concepts that go through many periods of back and forth growth are what makes up cycles in human history. They are also what is used to determine lessons that are to be worked on when a person begins a new incarnation.

This conglomerate or inner being of all humanity from time immemorial is the one, single most important factor or way of producing spiritual growth – and thereby fostering new stages in evolution – that is available to the earth planet. It has not been understood up until this time not even remotely by any. It is now time to further the understanding of how this works.

When a thought has been recycled to the point where it is an absolute principle for human growth and evolution it is then employed by those whose evolutionary growth is far enough along to be able to work with it, and it is used to form future personalities on the inner planes who will have their opportunity to manifest at a later time as a spiritual master. In other words, the growth of masters who incarnate on the earth has been taking place for many thousands of years on the inner planes which is the area of time/space continuum below the manifested level of vibrations. This is another area that needs to be explained. The vibrations below the manifested plane of vibratory rate are too strong to survive the transition that takes place when manifestation in the physical world comes about. This strength of vibrations is due to the difference between physical matter and ethereal matter. Ethereal matter is much closer to the original source of all vibrations, the Creator, and cannot, as given, survive the transition. Therefore, when one is working with using these strong vibrations and taking a perfected concept and wishing, then, to reincarnate and bring this concept into manifestation to teach it bodily to humans – instead of through thought processes – one must become this concept in the unmanifested state.

There is a definite way in which this is accomplished and the concept is sent through several previous incarnations as a partial basis for each incarnation building up, as it were, into one total lifetime of manifesting this concept on the earth plane. This buildup starts half way through the scale of vibratory rate that a spirit is working on and the lifetime as a master culminates on the lifetime of the twelfth tone of that particular entity's scale. This is the lifetime I (Norma) am in at this present time. As a master of creation, you have been working on these concepts for the last six lifetimes, embracing music in each one of these lives as the concept that one must become before manifesting and bringing this concept to humanity in manifestation instead of just through thoughtforms.

It is necessary that everyone understand better how and when and why and where the most pertinent help for planet earth's inhabitants can and will and should come from. What I want to leave

everyone with, is the fact that any information coming from outside the immediate area of planet earth will not be as applicable to humans in their struggle for growth as that which comes from the conglomerate mind that has been through all stages of evolution on earth thus far. This conglomerate mind understands what it means to be torn by betrayal, to feel lonely, to feel rejection and to feel constantly lacking in spiritual ability to communicate with the Creator. This conglomerate mind understands all this because these are the feelings that come through the emotional body of humans which is the flesh body that has evolved from nature out of the material of the earth.

Those from other planetary systems such as the Pleiadians can understand the wants and desires of the divine spark of those on earth and can give advice from this standpoint, but cannot give practical advice as to how to employ this advice and guidance when it must be used and filtered through and be embedded into the animal body that the spirits are embedded in. Without the wisdom of how to do this, the advice given by ones such as the Pleiadians are causing humans to feel that they can never be perfect and that it is futile to attempt to be something which they feel they are unable to live up to. The perfection that the Pleiadians have as far as spiritual completion with their Creator can never be achieved by those on the earth plane. It is an impossibility due to the lowered vibratory rate of the human body, which is composed of material of the earth. Those from the Pleiades are of a much higher vibratory rate and never had a material body. Therefore, their advice and wisdom and knowledge is only confusing humans and causing a sense of dismay at their inability to become as perfect as the vibration from the Pleiades is. To begin with, this is not the goal for humans, to become perfection such as this. This is very far from the goal of humans. This is the danger of too much contact with other planetary systems. This all needs to be understood before this contact goes any further. Each planet in each solar system is serving an entirely different function from all others. There can be an exchange of information but there should be no pressure put on other planet's inhabitants to be exactly like any other planet.

This series of New Millennium NoteBooks will hopefully further our understanding of things that happened long ago and far away from the time period we are experiencing now. Analogies are used in many places to help with understanding. Teaching through the use of analogies will be the trend of education for the future –

AnalogicThought. While contemplating these NoteBooks I hope you will allow yourself to imagine that perhaps I have been given incredible insight into some of the mysteries of the universe. Please allow your mind to expand and wonder “what if” it all took place as being presented.

Norma