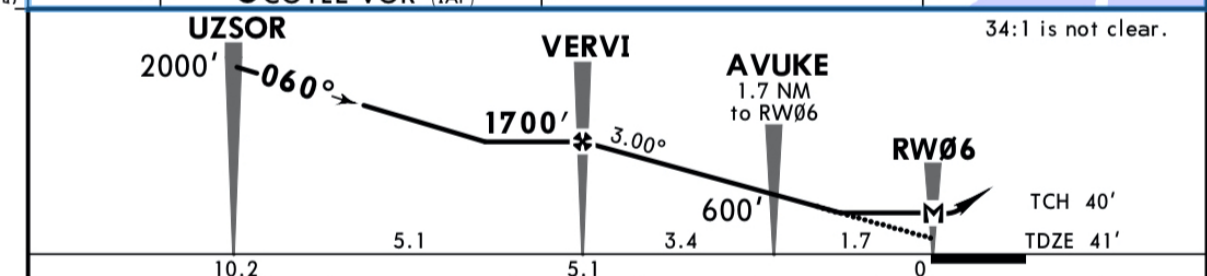
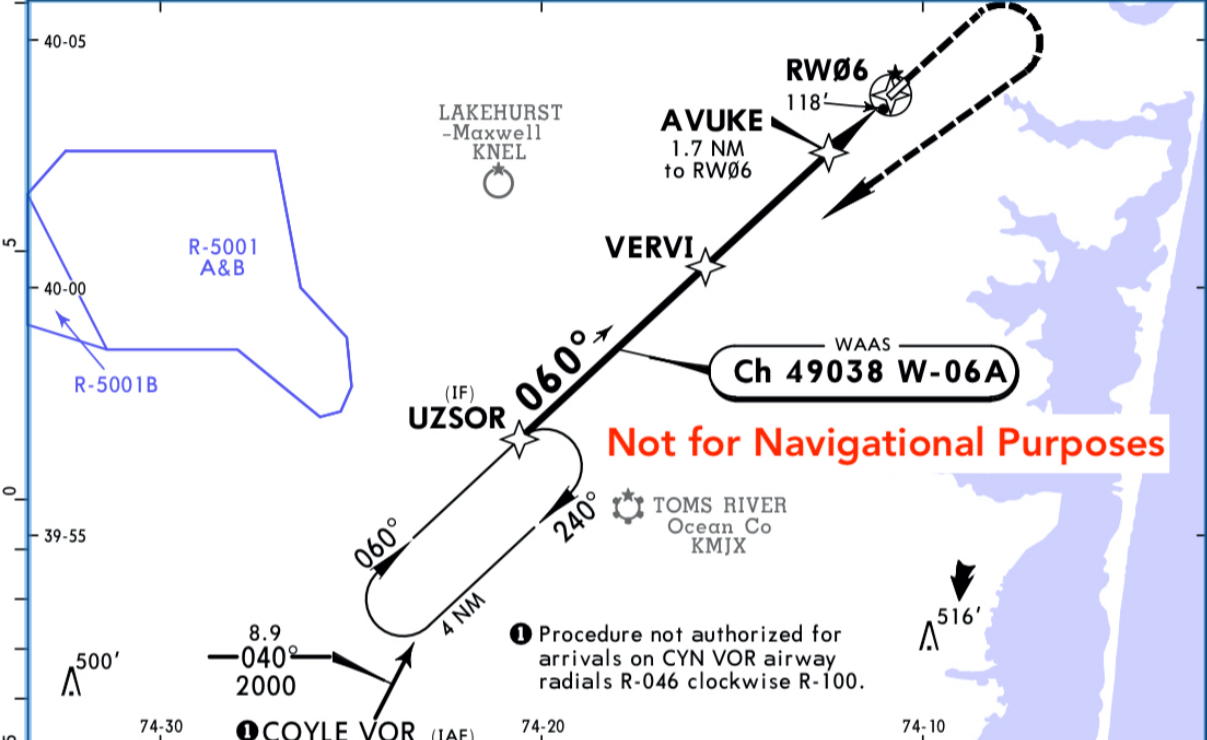


AWOS-AV 122.8		McGUIRE Approach (R) 124.15		LAKEWOOD UNICOM CTAF 122.8	
WAAS Ch 49038 W-06A	Final Apch Crs 060°	Minimum Alt VERVI 1700' (1659')	LP MDA(H) (CONDITIONAL) 380' (339')	Apt Elev 42'	2100 MSA RW06
MISSED APCH: Climb to 1000' then climbing RIGHT turn to 2000' direct UZSOR and hold.					
Alt Set: INCHES Trans level: FL 180 Trans alt: 18000' 1. Procedure not authorized at night. 2. Use local altimeter setting; if not received, use Lakehurst altimeter setting. 3. DME/DME RNP-0.30 not authorized. 4. Helicopter visibility reduction below 1 SM not authorized. 5. VGSI and descent angles not coincident (VGSI angle 3.00°/TCH 15'). 6. Pilot controlled lighting 122.8.					



Gnd speed-Kts	70	90	100	120	140	160	PAPI-R	1000'	2000'	D → UZSOR
Descent Angle	3.00°	372	478	531	637	743		849	↑	
MAP at RW06										

TERPS				STRAIGHT-IN LANDING RWY 6 With Local Altimeter Setting				CIRCLE-TO-LAND With Local Altimeter Setting					
		LP MDA(H)	380' (339')			LNAV MDA(H)	580' (539')			Max Kts	MDA(H)		
A		1				1		90		580' (538') -1			
B		1				1		120		620' (578') -1			
C		NA				NA		C		NA			
D		NA				NA		D		NA			
		LP MDA(H)	420' (379')			LNAV MDA(H)	620' (579')			Max Kts	MDA(H)		
A		1				1		90		620' (578') -1			
B		1				1		120		660' (618') -1			
C		NA				NA		C		NA			
D		NA				NA		D		NA			

TERPS AMEND 1 2 MAR 2017