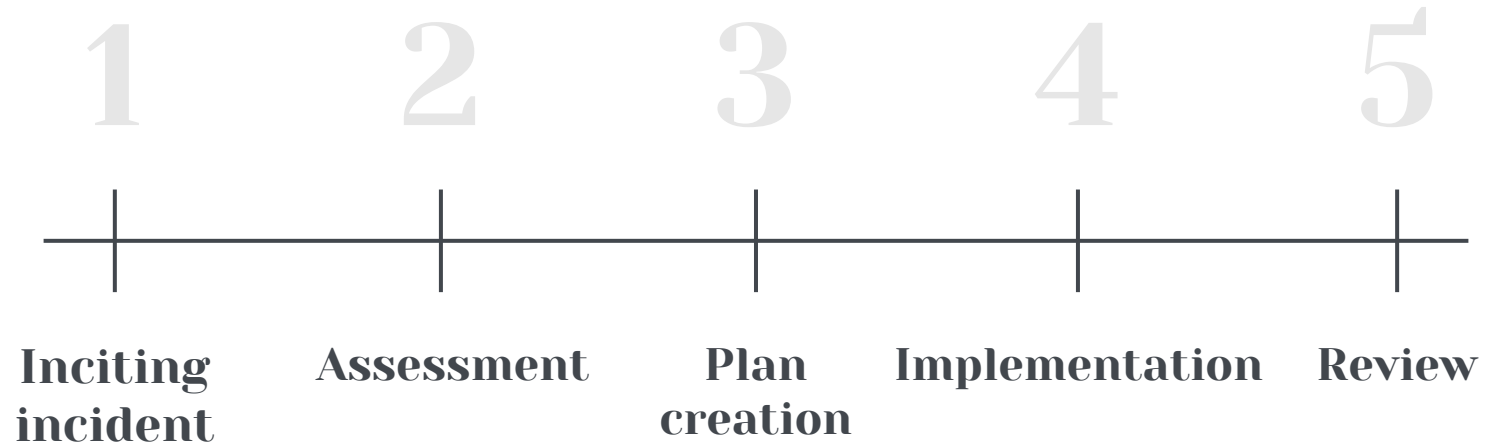


# Phases of an Accountability Process



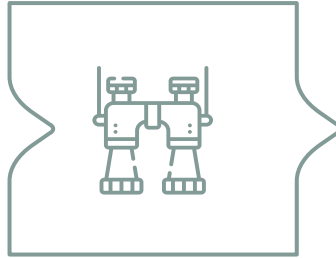
•  
•  
•  
•  
•  
•  
•  
•  
•  
•

# A “Process” is not always appropriate



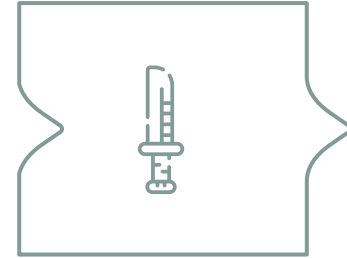
## Too small

Many things that can go wrong do not require an intensive and long term Process



## Just Right

Anything that can create lasting impact on others but can also be relieved through behavioral changes and repair work



## Too Large

Harm that would require resources beyond what an individual or small community can provide e.g. murder, human trafficking, weapons trafficking, etc.