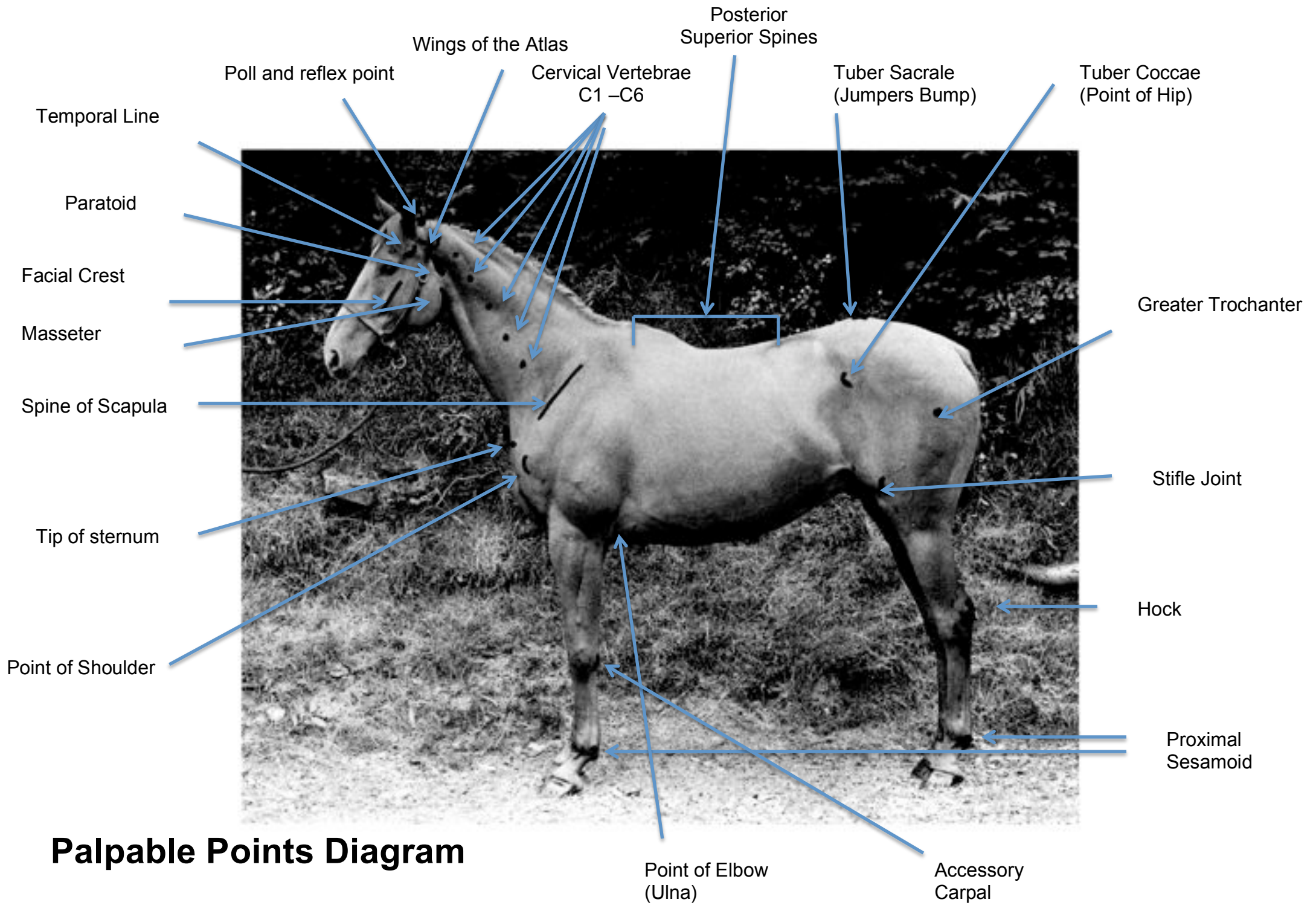


EQUINE DISTANCE LEARNING

Introduction to Equine Massage Certificate

ANATOMY PACK



Temporal Line

Paratoid

Facial Crest

Masseter

Spine of Scapula

Tip of sternum

Point of Shoulder

Poll and reflex point

Wings of the Atlas

Cervical Vertebrae C1 -C6

Posterior Superior Spines

Tuber Sacrale (Jumpers Bump)

Tuber Coccae (Point of Hip)

Greater Trochanter

Stifle Joint

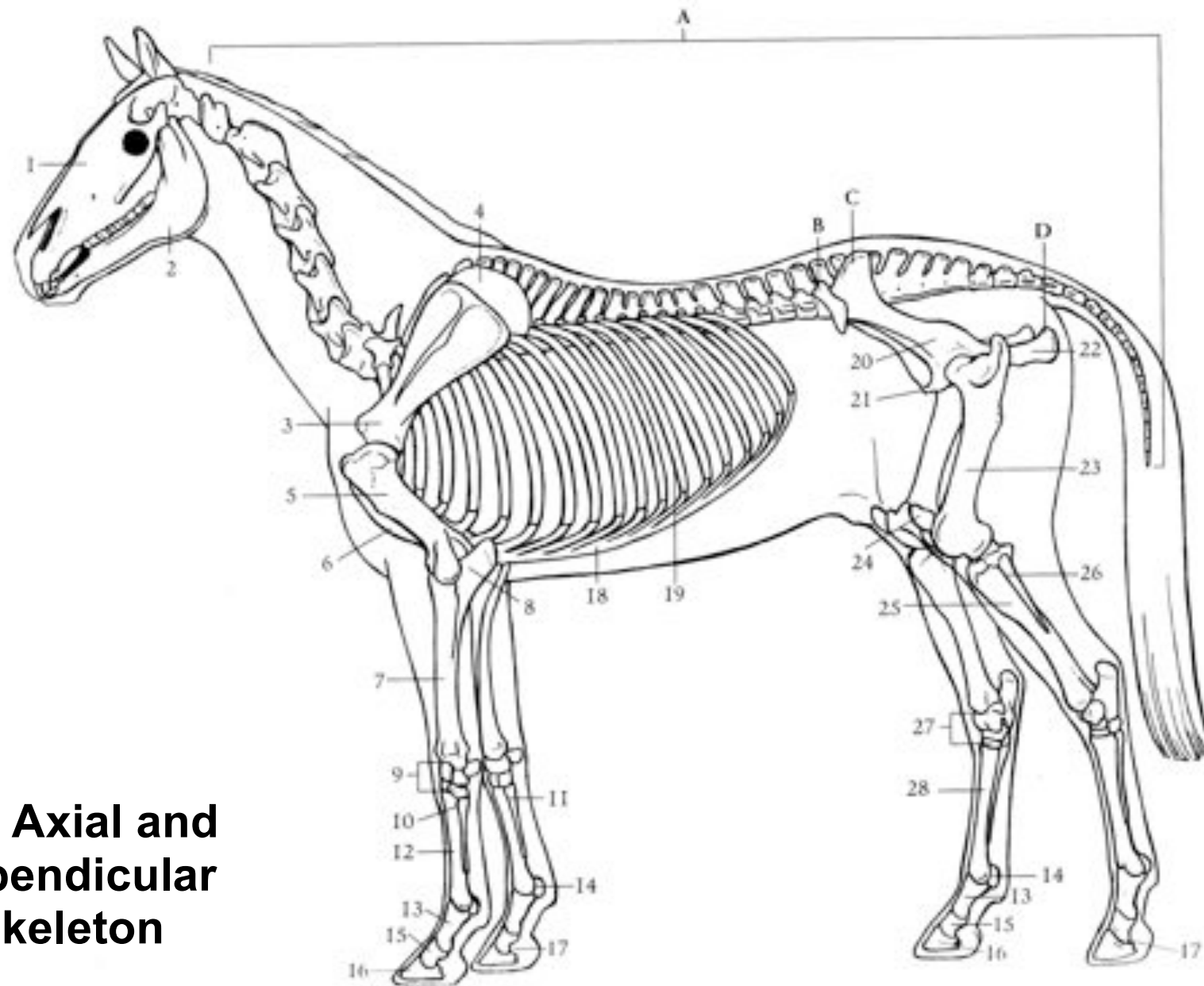
Hock

Proximal Sesamoid

Point of Elbow (Ulna)

Accessory Carpal

Palpable Points Diagram



The Axial and Appendicular Skeleton

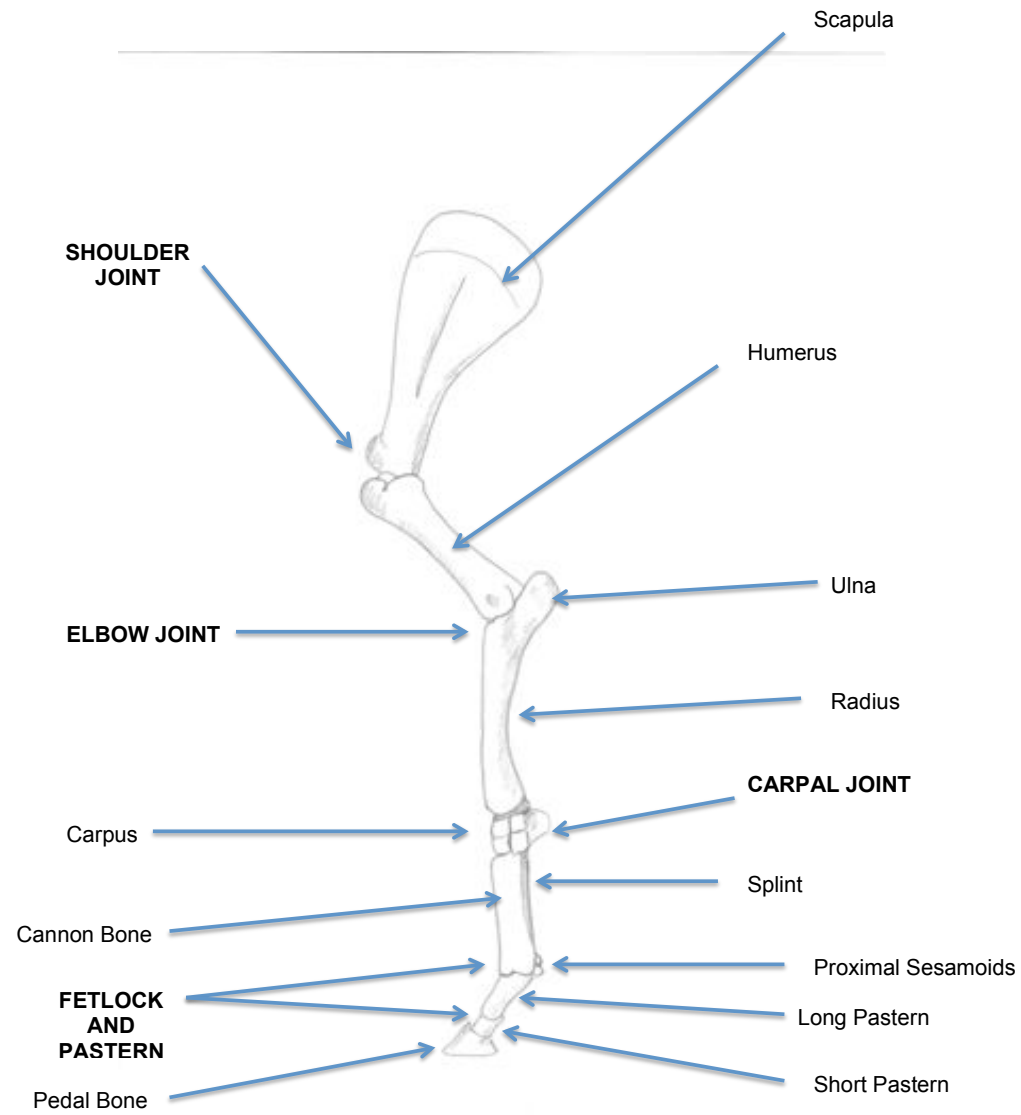
The Skeleton

- A. Vertebrae
- B. Tuber coxae (point of hip)
- C. Tuber sacrale (point of croup)
- D. Tuber ischii (point of buttock)

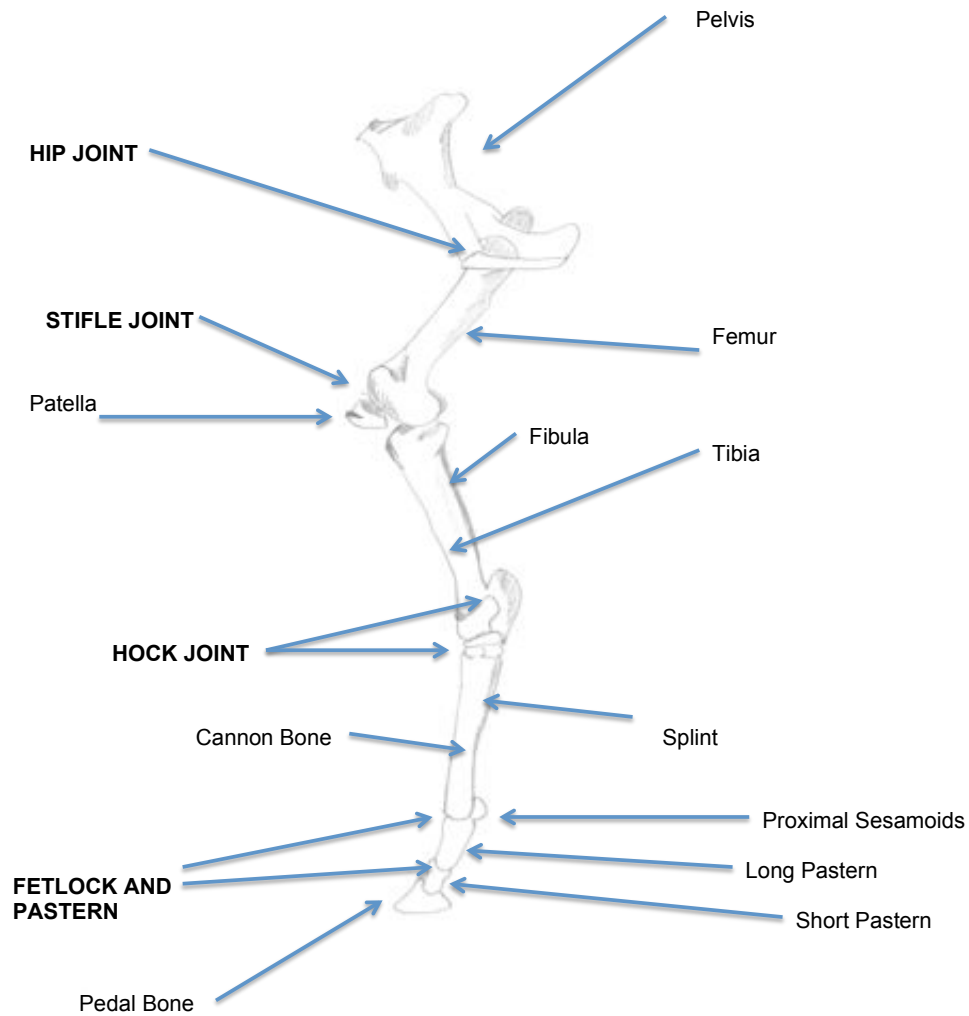
- 1. Skull
- 2. Mandible
- 3. Scapula
- 4. Scapular cartilage
- 5. Humerus
- 6. Sternum
- 7. Radius
- 8. Ulna
- 9. Carpal bones
- 10. Lateral splint bone

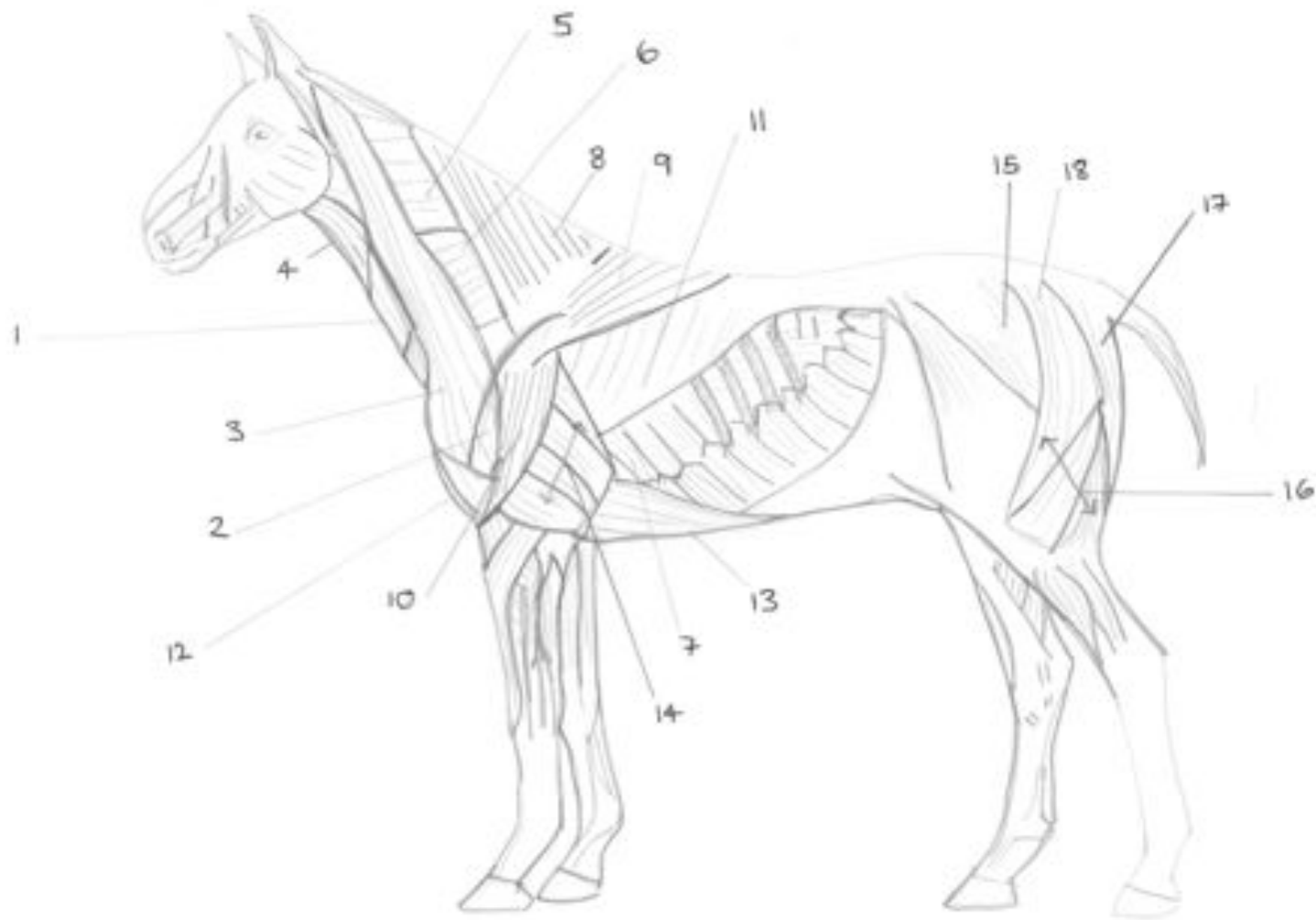
- 11. Medial splint bone
- 12. Cannon bone
- 13. Pastern bone
- 14. Proximal sesamoid bones
- 15. Short pastern bone
- 16. Pedal bone
- 17. Navicular bone
- 18. Costal cartilages
- 19. Ribs
- 20. Ilium
- 21. Pubis
- 22. Ischium
- 23. Femur
- 24. Patella
- 25. Tibia
- 26. Fibula
- 27. Tarsal bones
- 28. Hind cannon

The Bones of the Forelimb



The Bones of the Hindlimb

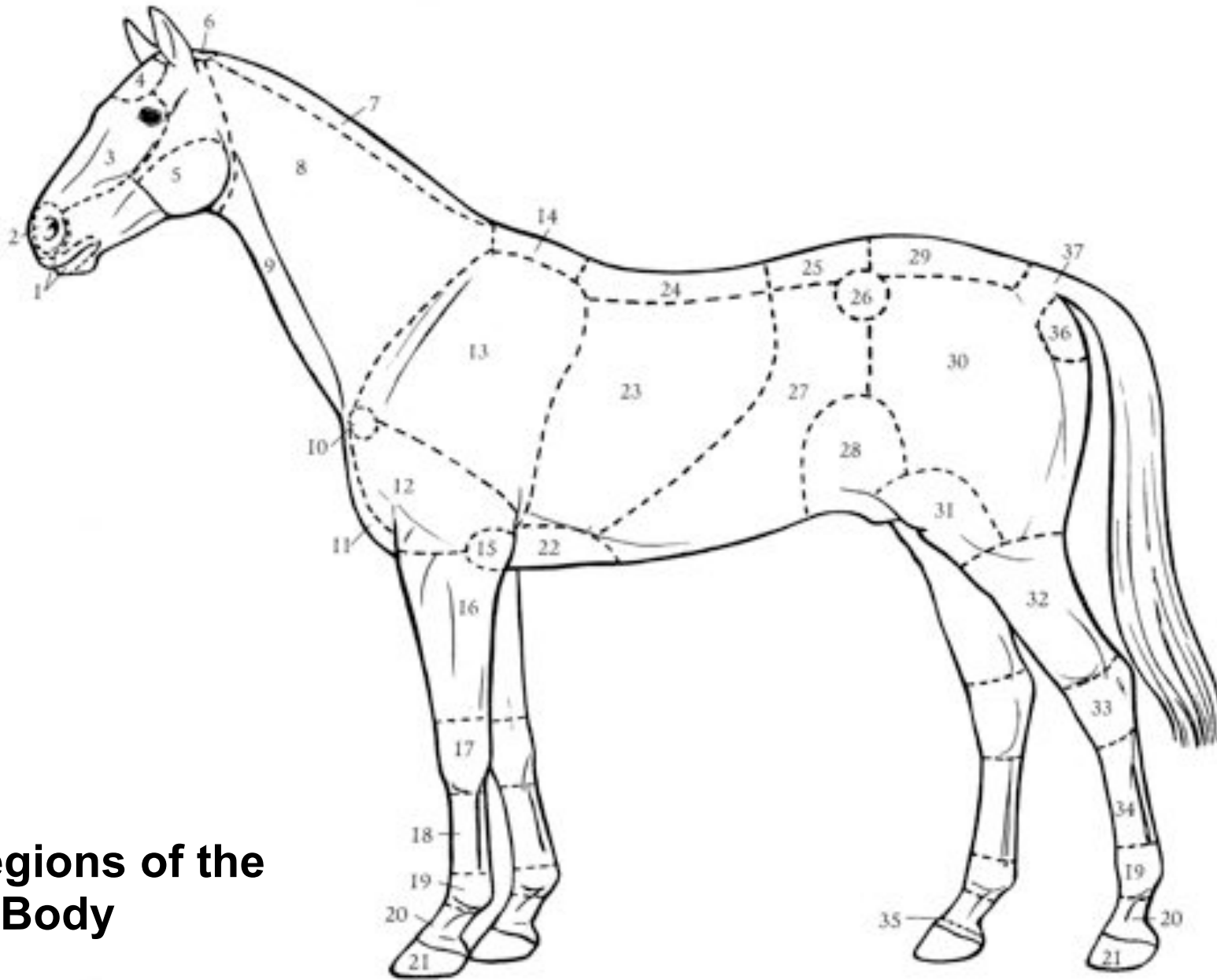




The Superficial Muscles

The Superficial Muscles

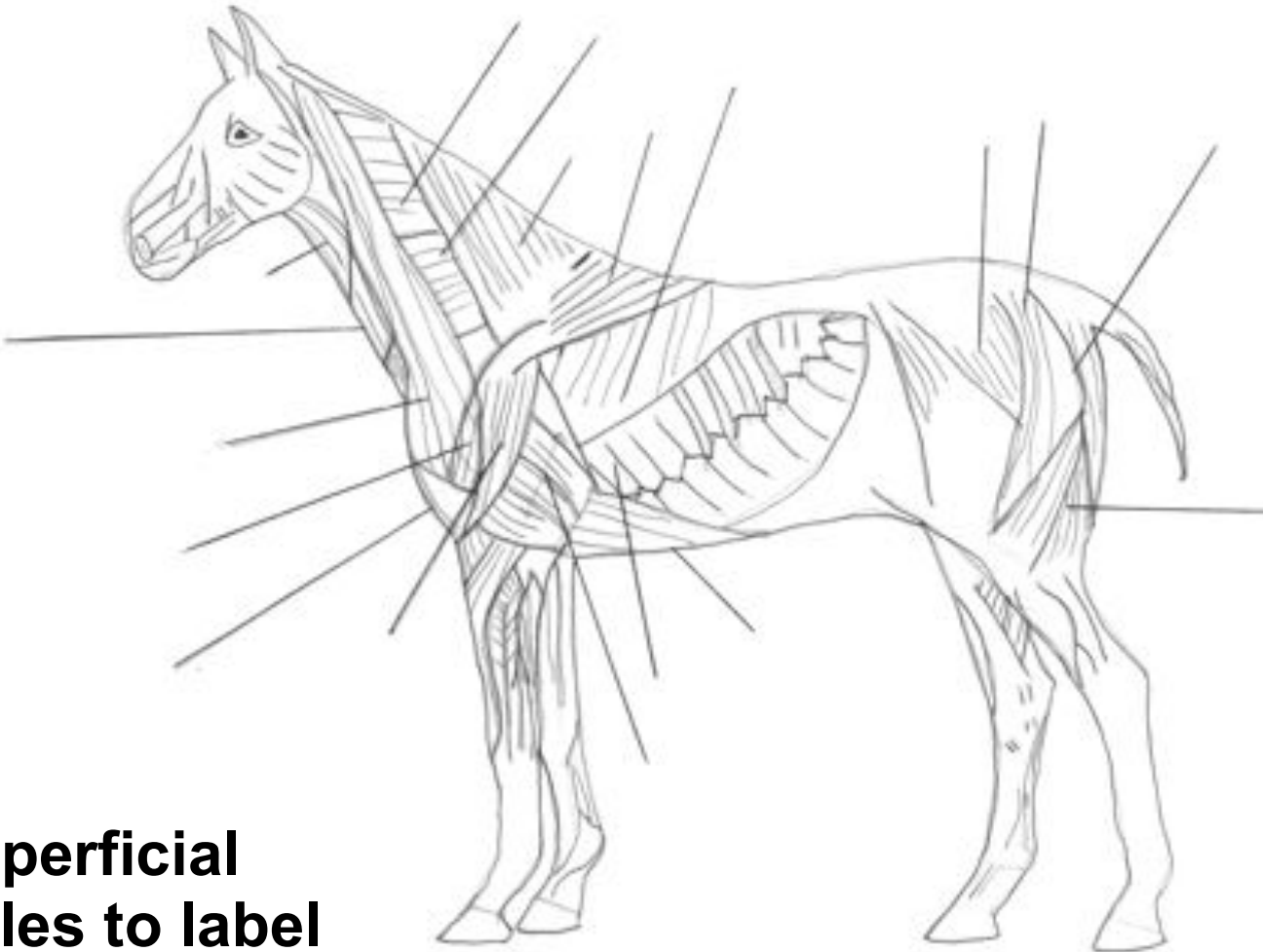
1. Sternomandibular
2. Subclavius
3. Brachiocephalic
4. Sternocephalic
5. Splenius
6. Cervical central serrated muscle
7. Thoracic ventral serrated muscle
8. Cervical trapezius muscle
9. Thoracic trapezius muscle
10. Deltoid muscle
11. Lattisimus dorsi
12. Descending pectoral muscles
13. Ascending pectoral muscles
14. Triceps
15. Superficial gluteal muscles
16. Biceps femoris
17. Semitendinosus
18. Semimembranosus



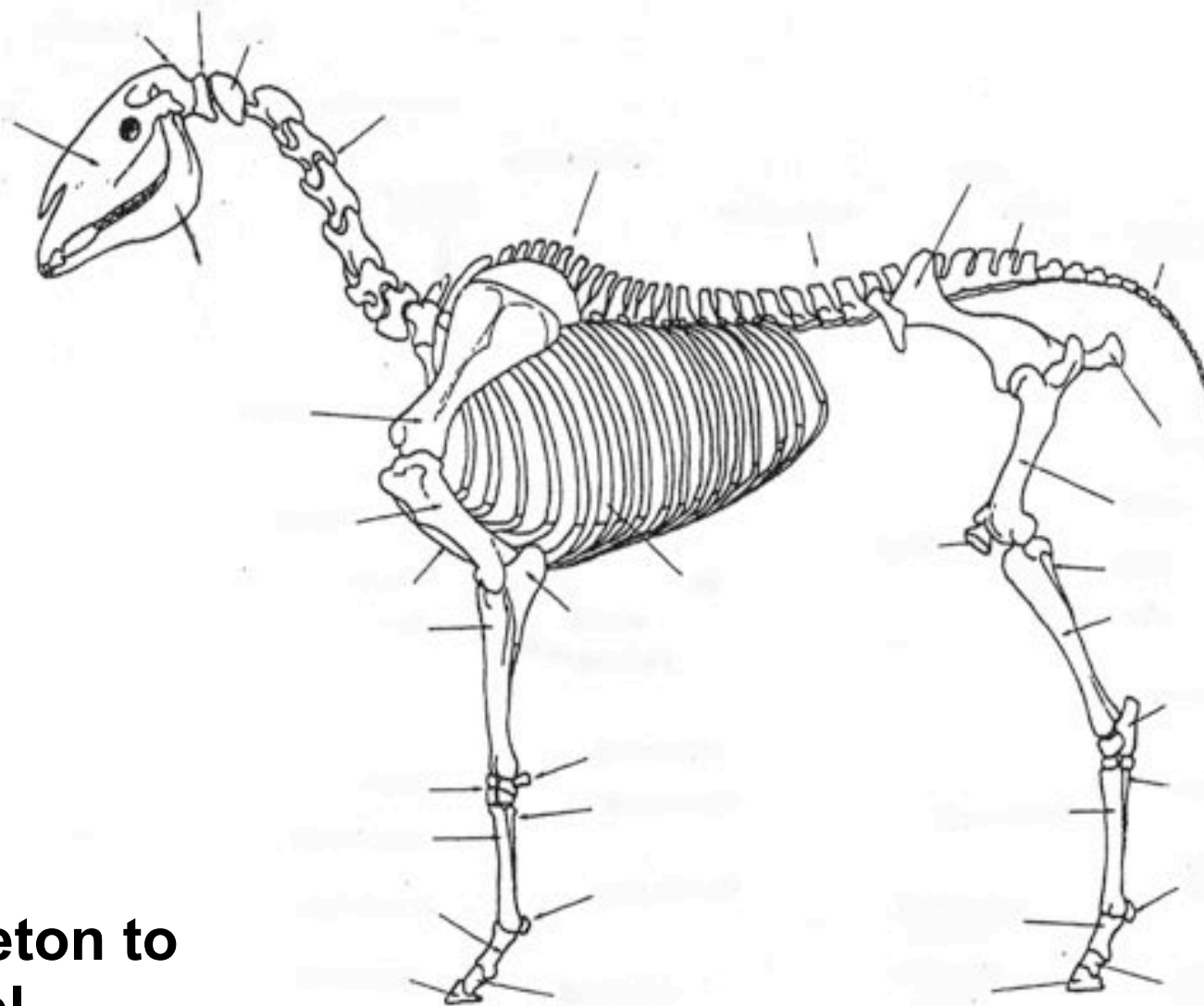
**The Regions of the
Body**

The Regions of the Body

1. Lips
2. Nostrils
3. Face
4. Forehead
5. Cheek
6. Poll
7. Crest
8. Neck
9. Jugular groove
10. Point of shoulder
11. Chest
12. Arm
13. Shoulder
14. Withers
15. Elbow
16. Forearm
17. Knee
18. Fore cannon
19. Fetlock
20. Pastern
21. Hoof
22. Girth
23. Thorax (barrel)
24. Back
25. Loin
26. Point of hip
27. Abdomen (belly)
28. Flank
29. Croup
30. Thigh (quarter)
31. Stifle
32. Leg (gaskin)
33. Hock
34. Hind cannon
35. Coronet
36. Buttock
37. Dock



**Superficial
Muscles to label**



**The Skeleton to
label**