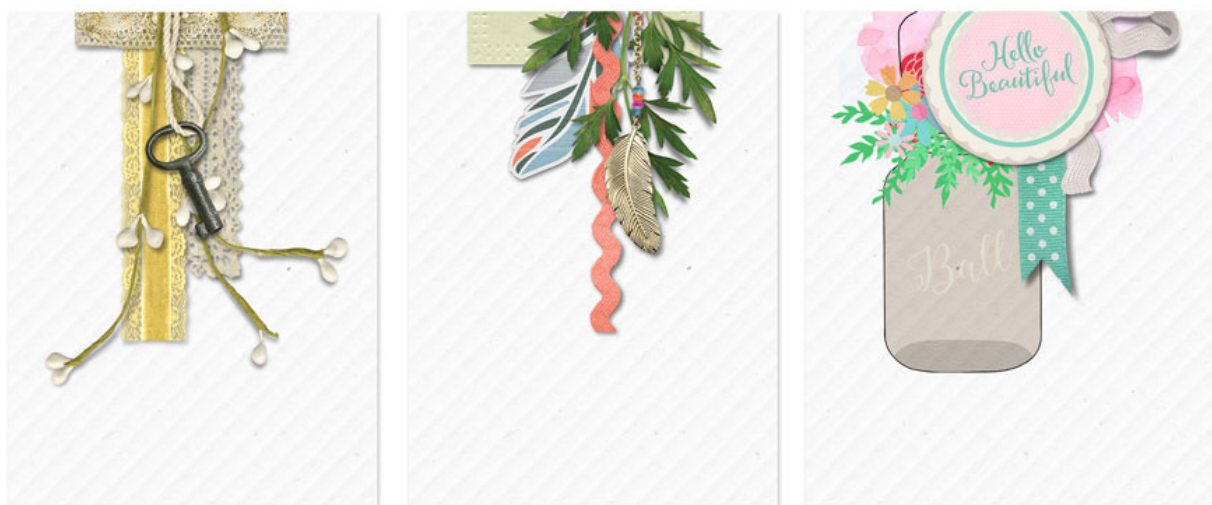




Class by Jen White

Cluster Queen

Lesson 06 Part 3: Top Edge Mini Cluster



Here are three more top edge mini clusters I created for this lesson. These are all very similar to the first mini cluster I created, but they are all using different elements from different kits.

- What do you think the focal element is for each of these three clusters?

The focal elements above are the key, the gold feather, and the Hello Beautiful medallion.

- Notice that each of the clusters has an anchor that is horizontal. In the last cluster, the anchor is the pink watercolor.

Step Three: Scraplift

What does it mean to scraplift? In this class, “scraplift” means to copy another person’s design using elements from your own stash.

- Choose five elements from your stash that are similar to the ones provided in this lesson. For help choosing your own elements, re-read Why These Five Elements from Step One.
- Using your five chosen elements, create a top edge mini cluster similar to one of the three clusters I created above.

Elements To Avoid

Not all of the elements in your stash will look good in a top edge mini cluster. Here are some element types to avoid:



- Avoid elements that are naturally meant to point up or sit up instead of hang down—things like a kite, a growing flower, a sign post, a bicycle, a tree, a sailboat, etc.



- Avoid elements that could not logically be clipped to the top edge of a page—pretty much anything that is super bulky (and possibly needing water).



- Avoid elements that would look bad if part of them was cut off. Think about it this way, if you cut the element in half horizontally, would you still be able to tell what it was? If not, don't use it.

Remember: Top edge mini clusters are supposed to mini. They are intended to add just a touch of beauty to a design, not demand attention. So, less is definitely more in this case. Resist the urge to overdo it.

Check Up

- Does your cluster contain a variety of textures?
- Did you stick to a coordinating color theme? Try using elements from the same kit or use my FREE Color Change tutorial (from Lesson 1) to make them match.
- Did you apply your cluster's drop shadows appropriately? Use my Drop Shadows chart in Step Two as a guide. If you used my action set, do you see a stoplight?
- Are all your elements pointing straight down?
- Are all your elements partly off the document?
- Are the vertical centers of each element in the cluster varied?
- Did you vary the length of each of the element in the cluster.
- Are all your elements overlapping and in very close proximity to each other?

- Are your elements proportional?
- Imagine placing the big clip on the edge of your document where your cluster hangs down. Do all the elements come out from under the clip?

Cluster Destinations

You will certainly want to DO something with the beautiful clusters you create. Top edge mini clusters have many uses. Consider some of these ideas to create a finished project.



Your top edge mini cluster is design to go at the top edge of a scrapbook page. But, what side of the page you put it on doesn't really matter.



A top edge mini cluster also works well on a greeting card. It will look best if you keep the size of the cluster very small.

How will you use your top edge mini clusters? I'd love to see what you create. If you post in a gallery on the web, send me a link so I can leave a comment.

I'll see you at lesson seven.

Jen White, Instructor for Cluster Queen

Credits

Clusters: Jen White

Elements: Kristin Cronin-Barrow, Jen White, Etc By Danyale, Cindy Rohrbough, DRB Designs, Susie Roberts, Amber Shaw, Vero, Jennifer Ziegler, D's Design, Emily Abramson, Laitha Designs, JB Studio, Kristin Aagard, Red Ivy Designs, Angie Briggs, Cottage Arts