

Leading the Way

February 14, 2020



FROM LEFT: PAUL MORIGI— NATIONAL GEOGRAPHIC/GETTY IMAGES; CHARLEY GALLAY— NAACP/GETTY IMAGES; AMANDA EDWARDS—WIREIMAGE/GETTY IMAGES; JON KOPALOFF—FILMMAGIC/GETTY IMAGES

黄色の箇所が人物+is です。

箇所をどれだけみつけられましたか？

*青色はもっと先に学習する受け身形です。

These four women have done their part to help the planet. They have inspired others to do the same. Which of these women inspires you?

Jane Goodall



JON KOPALOFF—FILMMAGIC/GETTY IMAGES

Jane Goodall is a scientist. She is best known for studying chimpanzees in the wild.

Goodall was one of the first women to do this kind of work.

Wangari Maathai



CHARLEY GALLAY— NAACP/GETTY IMAGES

Wangari Maathai started a group that plants trees across Africa. In 2004, she won a Nobel Peace Prize for her work helping women and the environment.

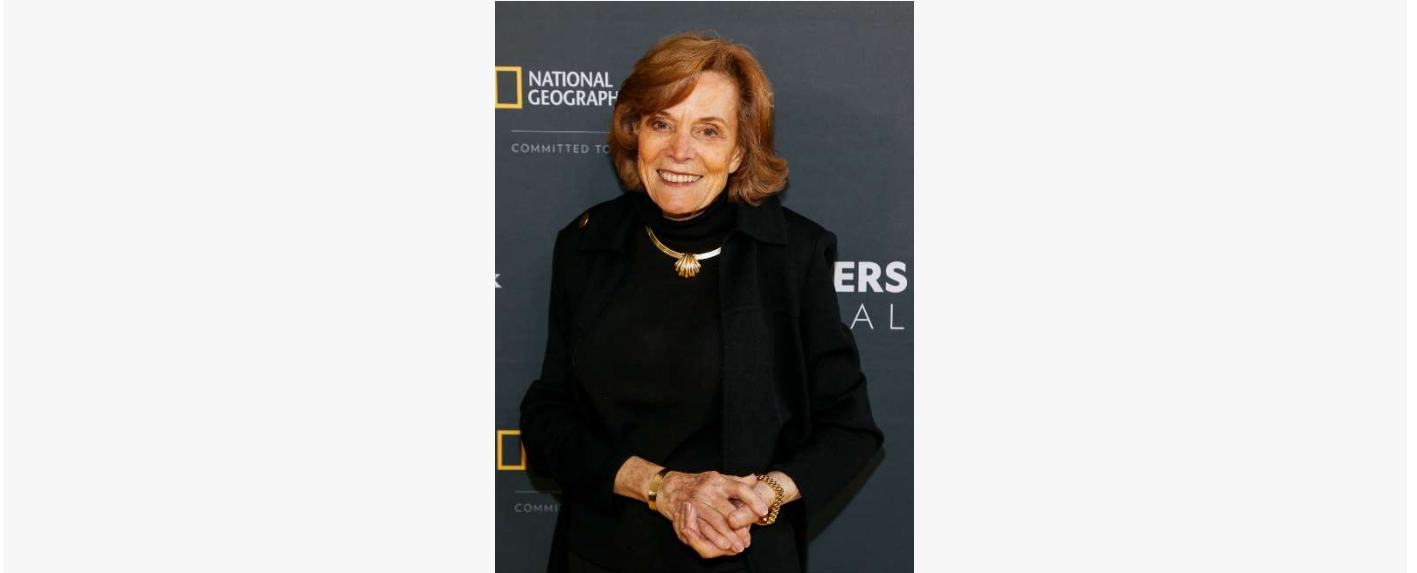
Vandana Shiva



AMANDA EDWARDS—WIREIMAGE/GETTY IMAGES

Vandana Shiva is a scientist and environmental activist. **She is** from India. She works to protect farmland. She helps people grow better, healthier food.

Sylvia Earle



PAUL MORIGI—GETTY IMAGES/NATIONAL GEOGRAPHIC

Sylvia Earle is an ocean scientist and explorer. She has spent more than 60 years working to protect the world's oceans. She has led many underwater expeditions.