



# Thank You

I am so excited for you to grow your creative skills! Keep an eye out for an additional email that will include course log in information. Should you have any issues accessing your subscription I can be reached directly at [shakiaharrisart@gmail.com](mailto:shakiaharrisart@gmail.com).

*Example of confirmation email:*

## Shakia Harris Art

Redeem your copy of Orange Roses with Oil Painter, Shakia Harris

Art

Confirm your email address Hello test, Glad to have you on board. Please confirm your email address by clicking the button below: log in with your new account. © Shakia Harris Art



[bit.ly/shakiacourse](https://bit.ly/shakiacourse)

@shakiaharrisart

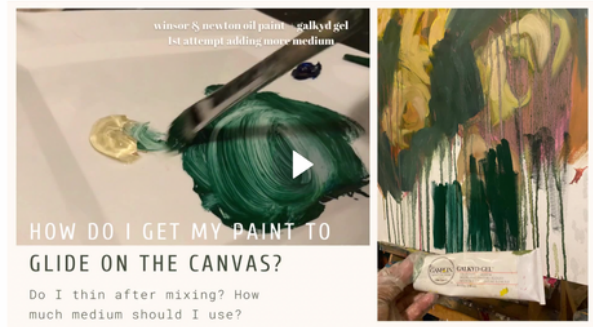
# Course Preview:

Exclusive access to instructor's recorded answers to frequently asked questions (FAQ):

**First Layers**  
0 / 7 complete

Supply list	Start
Reference Photo	Start
Composition (5:55)	Start
Darks (6:49)	Start
Midtones (6:31)	Start
Lights (23:57)	Start
Final Edits & Troubleshooting (5:39)	Start

## Trouble getting colors to "glide" on the canvas



Complete and Continue >

## Self-paced online modules

0% COMPLETE

- Midtones (6:31)
- Lights (23:57)**
- Final Edits & Troubleshooting (5:39)

**Bonus Section**

- Varnishing the final piece (1:16)
- Canvas Edges (0:58)
- Attach Dustcover For A Professional Finish
- Attach Wire To Canvas (2:33)

### Lights

15:18 | 23:57

Complete and Continue >

## Ability to leave comments & questions

0% COMPLETE

- Midtones (6:31)
- Lights (23:57)**
- Final Edits & Troubleshooting (5:39)

**Bonus Section**

- Varnishing the final piece (1:16)
- Canvas Edges (0:58)
- Attach Dustcover For A Professional Finish
- Attach Wire To Canvas (2:33)

Discussion

Post a comment

**Instructor**

Shakia Harris

Leave a comment...

Post Comment

# Supplies Used:

- 22x28in pre-primed stretched canvas (any mid-large size canvas should work. I'd recommend no smaller than 16x20 inch)
- 3-4 long-handled paint brushes of different sizes (filbert and/or angled) My largest brushes are sizes 12, 14, & 18. Simply Simmons Level 1 Long Handle natural hair is my favorite. If you're going to buy natural bristles I'd recommend you grab at the hairs to make sure they're secure & not going to shed. I use a mix of synthetic brushes, so it's ok if that's all you have.  
Long-Handled Paint Brush Sets: option 1, option 2, option 3, option 4, option 5, option 6, Princeton Filbert, Majestic Royal Filbert, Hog Hair Filbert, Dugato Filbert

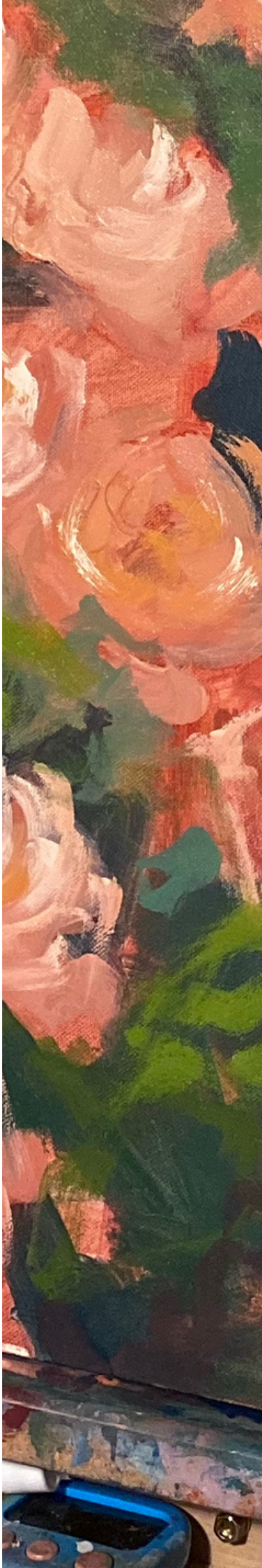
*\*\*I am not a fan of the long-handle Artist Loft Natural Hair Brushes. Very rough texture, sheds, and not the smoothest application*

- Odorless Paint Thinner, Odorless Mineral Spirits
- Galkyd Lite 8oz., 4 oz, 16 oz., or Gamblin Solvent Free Gel
- Paint rag (old towel or clothes tend to work better than paper towels)
- For a *matte-like* finish: Golden Archival Varnish Satin or Golden Archival Matte
- For a *slight sheen* & to have your colors really POP Kamar Varnish . If you don't varnish please note that when your painting dries your colors may appear dull.

- Color Wheel - I love using this adjustable color wheel.
- Oil paint colors: Cadmium red hue (37ml, 200ml), cadmium red deep hue (37ml, 200ml), cerulean blue hue, titanium white, cadmium yellow hue, phthalo blue. I use the Winsor & Newton brand
- Palette Knives - Get ones with a wood handle. I do not recommend plastic palette knives.

## Finishing Touches:

- Scissors or box cutter
- Sharpie Oil Paint Pens
- Dustcover paper
- Dustcover adhesive spray or glue stick
- Hanging Hardware: D Rings
- White acrylic paint for canvas edges



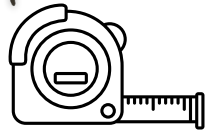


# Attaching Dustcover

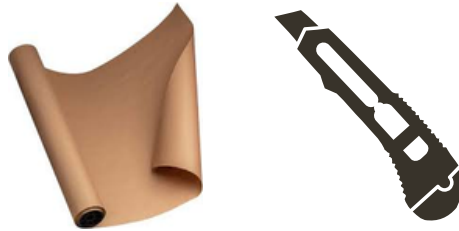
Supplies needed:

- Scissors or box cutter
- Dustcover paper
- Dustcover adhesive spray or glue stick

Step 1: Measure canvas size



Step 2: Cut Dustcover to size



Step 3: Apply adhesive to back of canvas frame  
do not apply to canvas edges or the canvas itself, only the wooden frame



spray to canvas frame, wipe excess off edges, wait until tacky & then apply dustcover. Apply too soon & adhesive will bleed through. Apply too late and the cover will peel off.



Apply liberally to canvas frame, wipe excess off edges, and immediately apply dustcover.